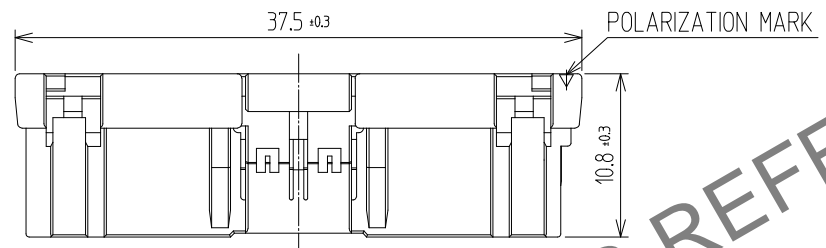


Oct.1.2024 Copyright 2024 HIROSE ELECTRIC CO., LTD. All Rights Reserved.
In case of consideration for using Automotive equipment / device which demand high reliability, kindly contact our sales window

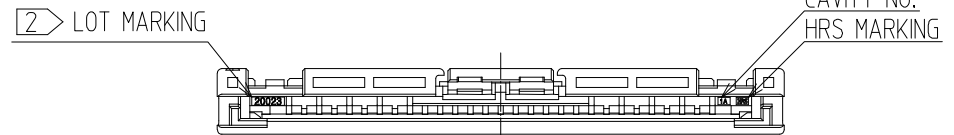
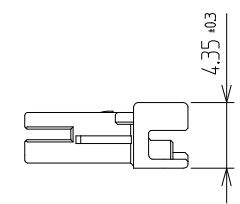
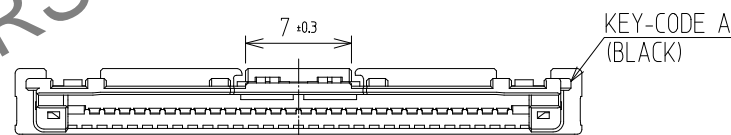
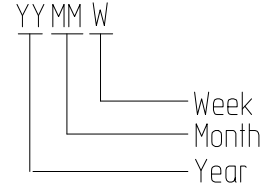
△數 COUNT	訂正事項 DESCRIPTION OF REVISIONS	擔當 B	檢圖 CHKD	年月日 DATE	△數 COUNT	訂正事項 DESCRIPTION OF REVISIONS	擔當 B	檢圖 CHKD	年月日 DATE
△				..	△				..
△				..	△				..
△				..	△				..



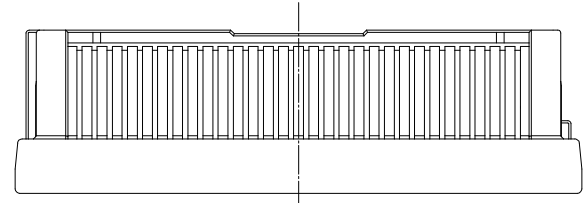
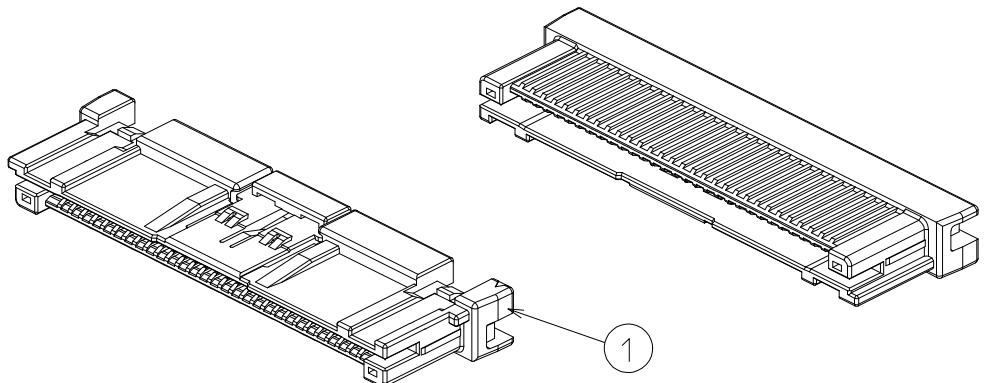
HRS DRAWING FOR REFERENCE

NOTE
 1. 1PACK CONTAINS 100PCS.
 2. LOT MARKING : YYMMW
 YY: YEAR, MM: MONTH, W:WEEK

Year		Month		Week	
Ex.	Mark	Ex.	Mark	Ex.	Mark
2020	20	Jan.	01	1st	1
2021	21	Feb.	02	2nd	2
2022	22	Mar.	03	3rd	3
2023	23	Apr.	04	4th	4
2024	24	May.	05	5th	5
2025	25	Jun.	06	6th	6
2026	26	Jul.	07		
2027	27	Aug.	08		
2028	28	Sep.	09		
2029	29	Oct.	10		
		Nov.	11		
		Dec.	12		

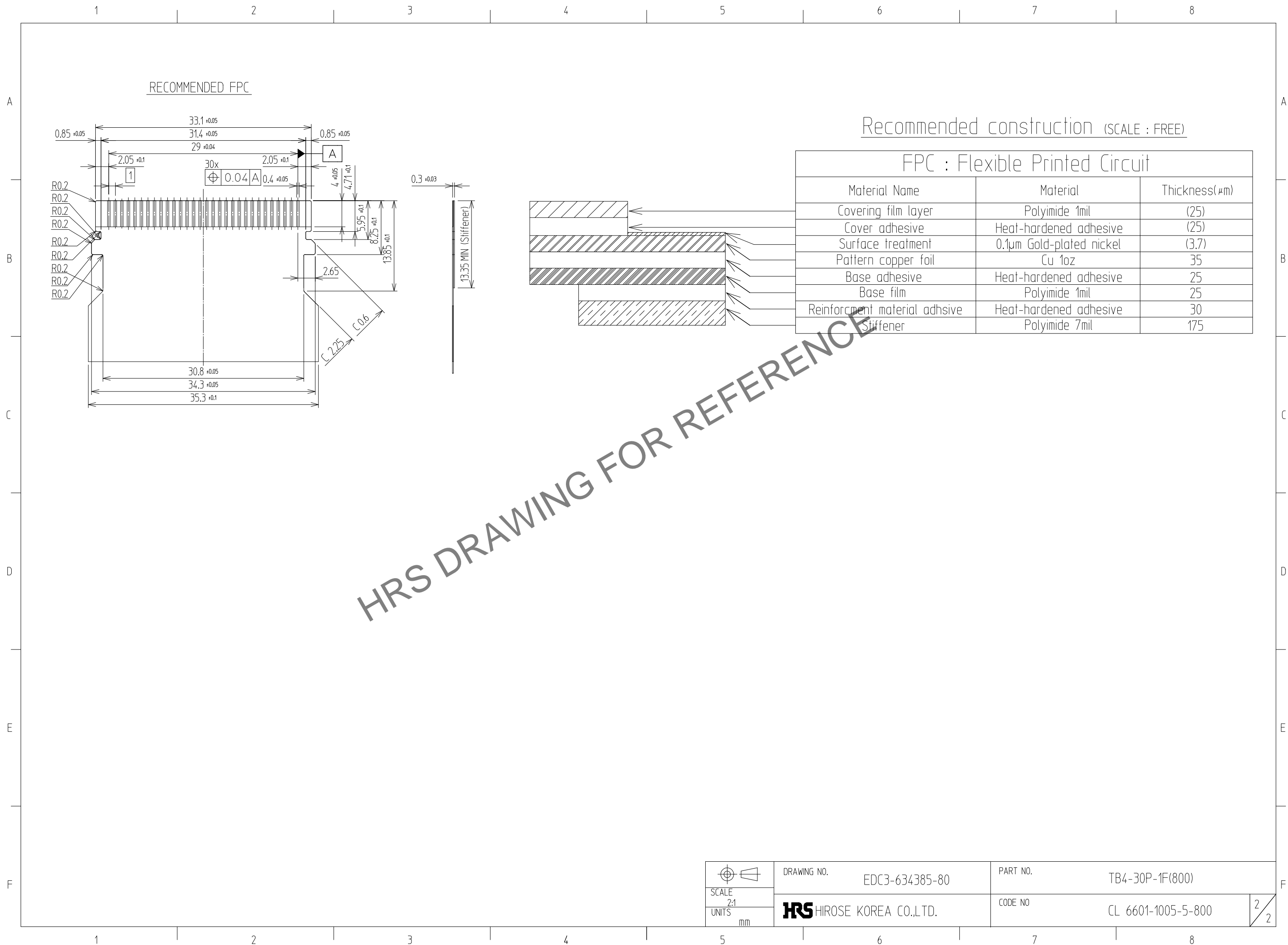


ISO VEIW



NO.	MATERIAL	FINISH,REMARKS	1	PA	UL94 V-0, BLACK
CODE NO. (OLD)			NO.	MATERIAL	FINISH,REMARKS
			DRAWN	DESIGNED	CHECKED
			CHOI 24.04.23 H.S	CHOI 24.04.23 H.S	LIM 24.04.23 S.M
					APPROVED
					LIM 24.04.23 S.M
					RELEASED
					ENG 24.05.09 DEPT
SCALE 2:1 UNITS mm	DRAWING NO. HRS HIROSE KOREA CO.,LTD.	EDC3-634385-80	PART NO.	TB4-30P-1F(800)	
			CODE NO.	CL 6601-1005-5-800	1/2

Oct.1.2024 Copyright 2024 HIROSE ELECTRIC CO., LTD. All Rights Reserved.
 In case of consideration for using Automotive equipment / device which demand high reliability, kindly contact our sales window correspondents.



Recommended construction (SCALE : FREE)

FPC : Flexible Printed Circuit		
Material Name	Material	Thickness(μm)
Covering film layer	Polyimide 1mil	(25)
Cover adhesive	Heat-hardened adhesive	(25)
Surface treatment	0.1μm Gold-plated nickel	(3.7)
Pattern copper foil	Cu 1oz	35
Base adhesive	Heat-hardened adhesive	25
Base film	Polyimide 1mil	25
Reinforcement material adhesive	Heat-hardened adhesive	30
Stiffener	Polyimide 7mil	175

HRS DRAWING FOR REFERENCE

 SCALE 2:1 UNITS mm	DRAWING NO.	EDC3-634385-80	PART NO.	TB4-30P-1F(800)
	HIROSE KOREA CO.,LTD.		CODE NO.	CL 6601-1005-5-800