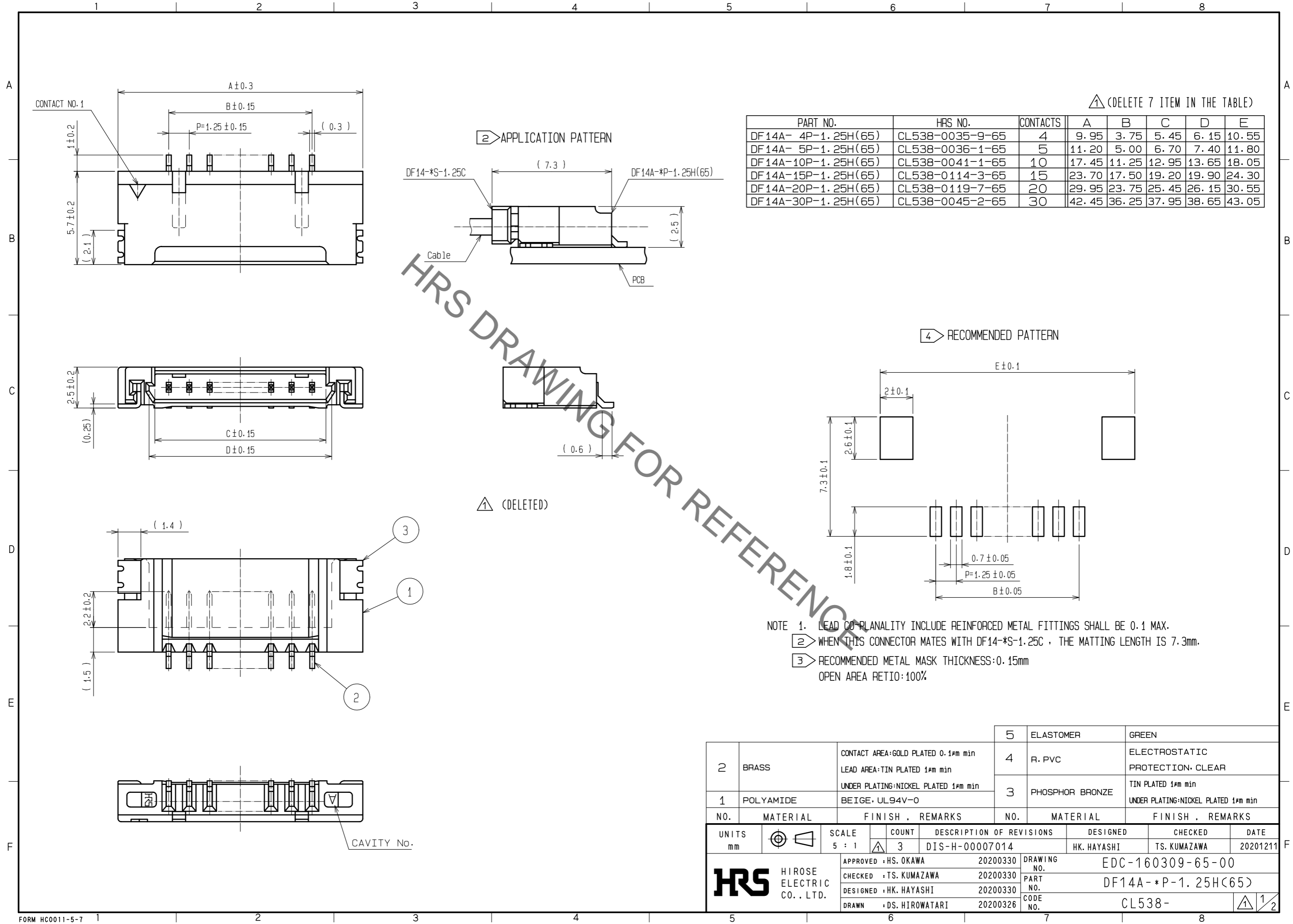


Aug.1.2021 Copyright 2021 HIROSE ELECTRIC CO., LTD. All Rights Reserved.
In case of consideration for using Automotive equipment / device which demand high reliability, kindly contact our sales window correspondents.



⚠ (DELETE 7 ITEM IN THE TABLE)

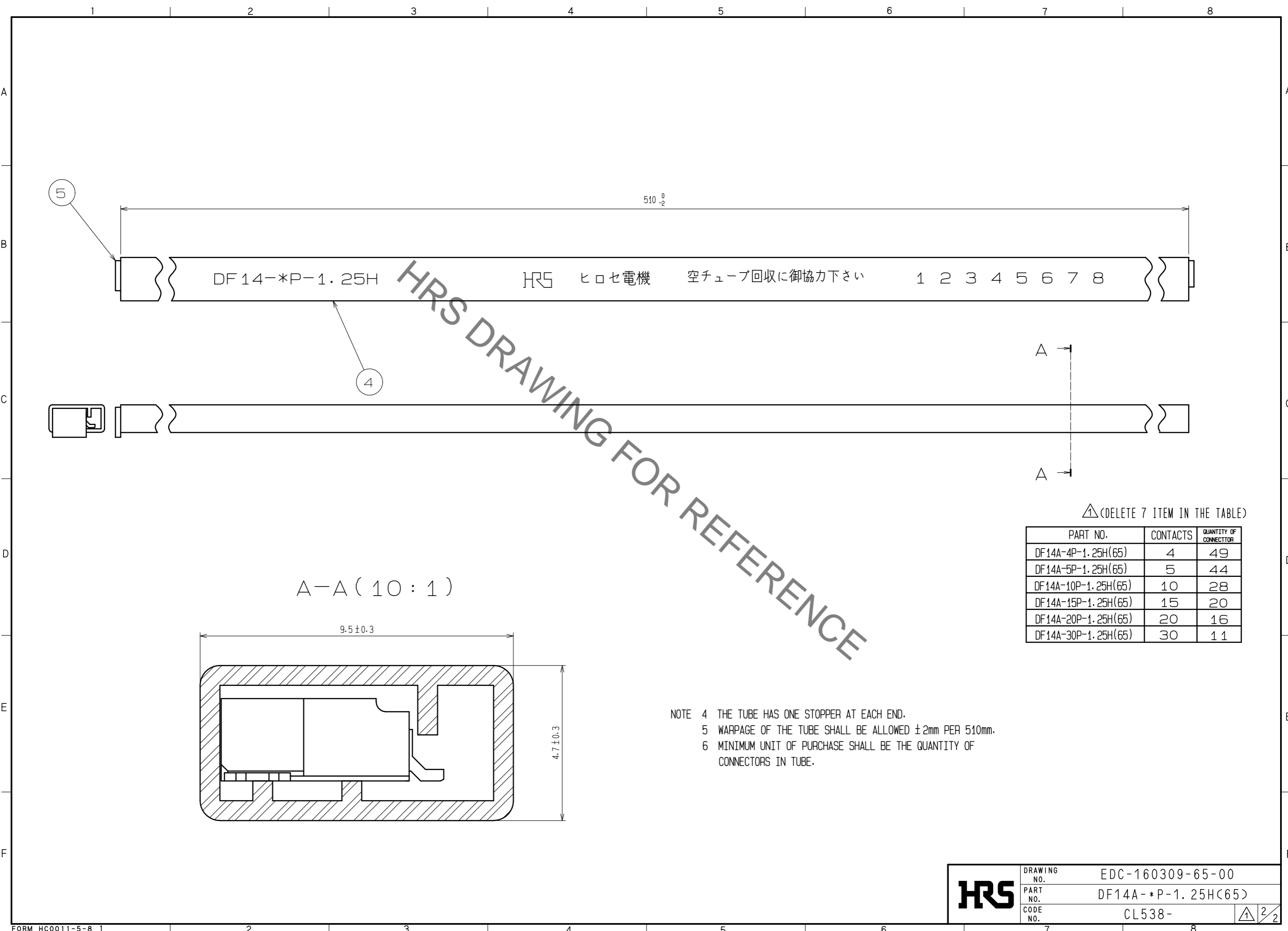
PART NO.	HRS NO.	CONTACTS	A	B	C	D	E
DF14A- 4P-1.25H(65)	CL538-0035-9-65	4	9.95	3.75	5.45	6.15	10.55
DF14A- 5P-1.25H(65)	CL538-0036-1-65	5	11.20	5.00	6.70	7.40	11.80
DF14A-10P-1.25H(65)	CL538-0041-1-65	10	17.45	11.25	12.95	13.65	18.05
DF14A-15P-1.25H(65)	CL538-0114-3-65	15	23.70	17.50	19.20	19.90	24.30
DF14A-20P-1.25H(65)	CL538-0119-7-65	20	29.95	23.75	25.45	26.15	30.55
DF14A-30P-1.25H(65)	CL538-0045-2-65	30	42.45	36.25	37.95	38.65	43.05

⚠ (DELETED)

- NOTE 1. LEAD CO-PLANALITY INCLUDE REINFORCED METAL FITTINGS SHALL BE 0.1 MAX.
 ② WHEN THIS CONNECTOR MATES WITH DF14-*S-1.25C , THE MATTING LENGTH IS 7.3mm.
 ③ RECOMMENDED METAL MASK THICKNESS:0.15mm
 OPEN AREA RETIO:100%

2	BRASS	CONTACT AREA:GOLD PLATED 0.1μm min LEAD AREA:TIN PLATED 1μm min UNDER PLATING:NICKEL PLATED 1μm min	5	ELASTOMER	GREEN
1	POLYAMIDE	BEIGE, UL94V-0	4	R. PVC	ELECTROSTATIC PROTECTION, CLEAR
			3	PHOSPHOR BRONZE	TIN PLATED 1μm min UNDER PLATING:NICKEL PLATED 1μm min
NO.	MATERIAL	FINISH . REMARKS	NO.	MATERIAL	FINISH . REMARKS
UNITS	mm	SCALE	5 : 1	COUNT	3
DESCRIPTION OF REVISIONS			DESIGNED	CHKD.	DATE
DIS-H-00007014			HK. HAYASHI	TS. KUMAZAWA	20201211
APPROVED : HS. OKAWA 20200330			DRAWING NO. EDC-160309-65-00		
CHECKED : TS. KUMAZAWA 20200330			PART NO. DF14A-*P-1.25H(65)		
DESIGNED : HK. HAYASHI 20200330			CODE NO. CL538-		
DRAWN : DS. HIROWATARI 20200326			1/2		

Aug.1.2021 Copyright 2021 HIROSE ELECTRIC CO., LTD. All Rights Reserved.
 In case of consideration for using Automotive equipment / device which demand high reliability, kindly contact our sales window correspondents.



DF 14-*P-1.25H

HRS ヒロセ電機 空チューブ回収に御協力下さい

1 2 3 4 5 6 7 8

510⁰/₋₂

A-A (10:1)

9.5 ± 0.3

4.7 ± 0.3

⚠ (DELETE 7 ITEM IN THE TABLE)

PART NO.	CONTACTS	QUANTITY OF CONNECTOR
DF14A-4P-1.25H(65)	4	49
DF14A-5P-1.25H(65)	5	44
DF14A-10P-1.25H(65)	10	28
DF14A-15P-1.25H(65)	15	20
DF14A-20P-1.25H(65)	20	16
DF14A-30P-1.25H(65)	30	11

- NOTE 4 THE TUBE HAS ONE STOPPER AT EACH END.
 5 WARPAGE OF THE TUBE SHALL BE ALLOWED ±2mm PER 510mm.
 6 MINIMUM UNIT OF PURCHASE SHALL BE THE QUANTITY OF CONNECTORS IN TUBE.

HRS	DRAWING NO.	EDC-160309-65-00
	PART NO.	DF14A-*P-1.25H(65)
	CODE NO.	CL538-
		⚠ 2/2