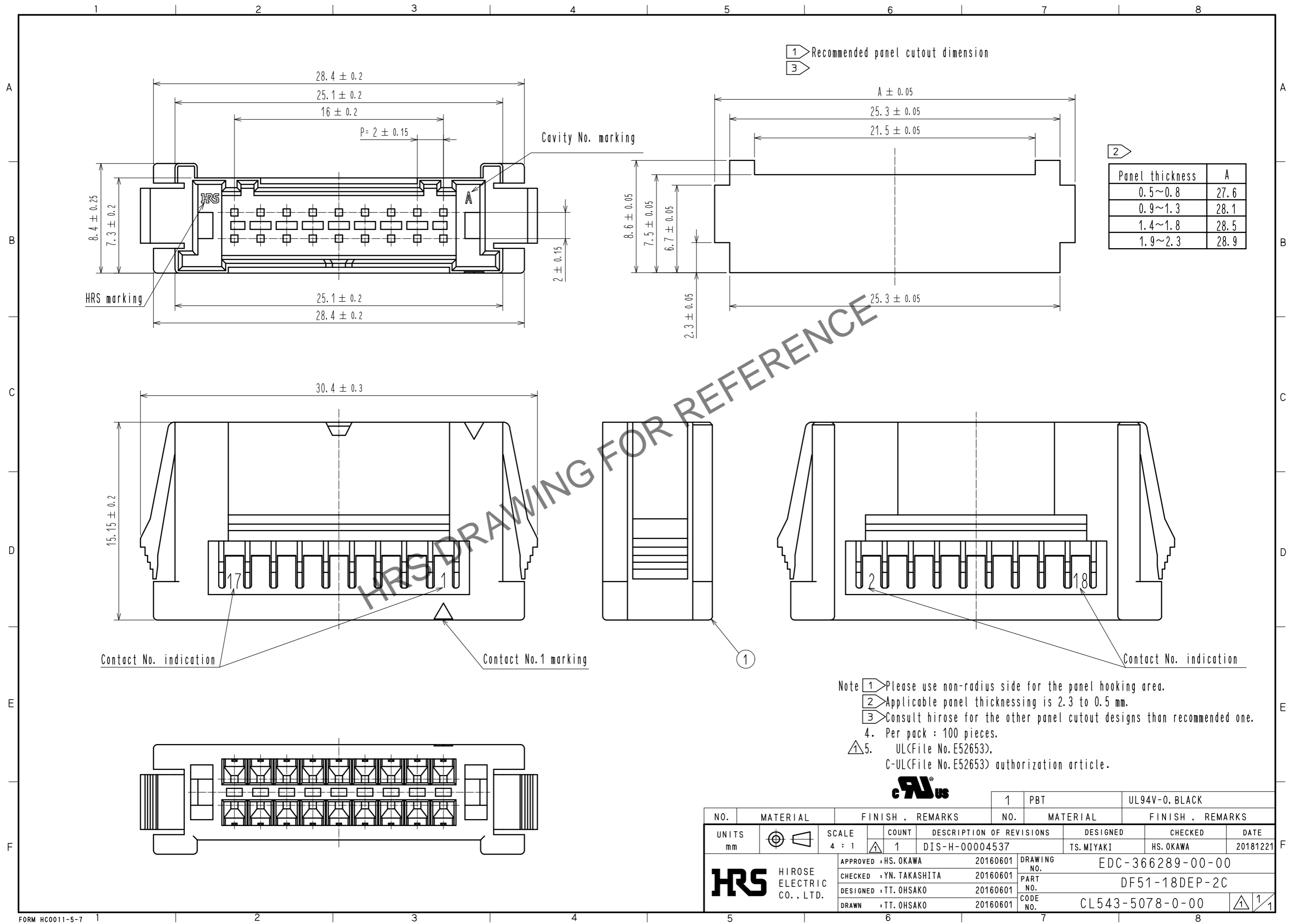


Aug.1.2024 Copyright 2024 HIROSE ELECTRIC CO., LTD. All Rights Reserved.
 In case of consideration for using Automotive equipment / device which demand high reliability, kindly contact our sales window correspondents.



Panel thickness	A
0.5~0.8	27.6
0.9~1.3	28.1
1.4~1.8	28.5
1.9~2.3	28.9

- Note
- ① Please use non-radius side for the panel hooking area.
 - ② Applicable panel thicknessing is 2.3 to 0.5 mm.
 - ③ Consult Hirose for the other panel cutout designs than recommended one.
 - 4. Per pack : 100 pieces.
 - △ 5. UL(File No.E52653),
C-UL(File No.E52653) authorization article.



NO.	MATERIAL	FINISH . REMARKS	NO.	MATERIAL	FINISH . REMARKS		
			1	PBT	UL94V-0. BLACK		
UNITS	mm	SCALE	COUNT	DESCRIPTION OF REVISIONS	DESIGNED	CHECKED	DATE
		4 : 1	1	DIS-H-00004537	TS.MIYAKI	HS.OKAWA	20181221
APPROVED : HS. OKAWA		20160601		DRAWING NO.		EDC-366289-00-00	
CHECKED : YN. TAKASHITA		20160601		PART NO.		DF51-18DEP-2C	
DESIGNED : TT. OHSAKO		20160601		CODE NO.		CL543-5078-0-00	
DRAWN : TT. OHSAKO		20160601				①/1	