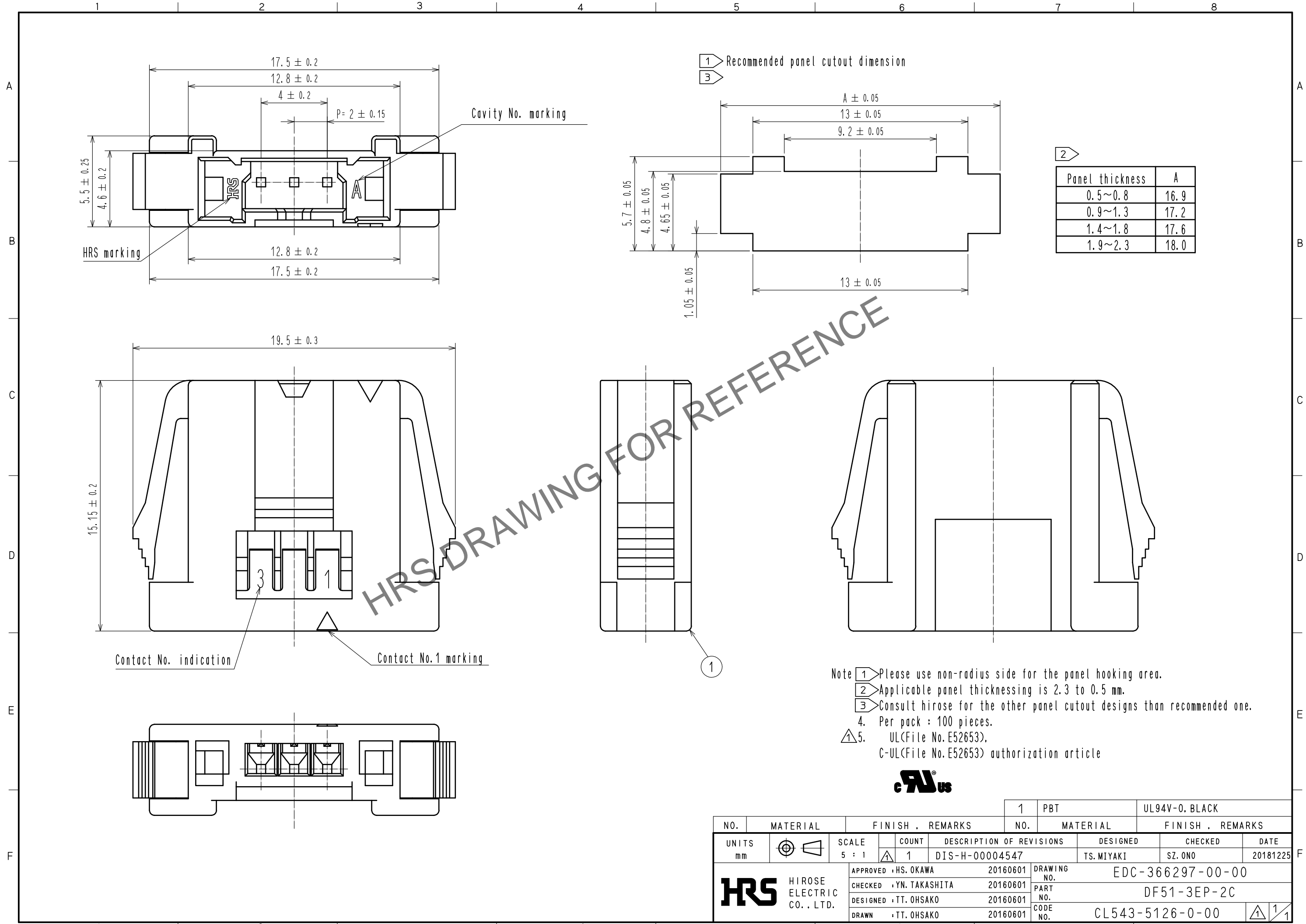


Oct.1.2024 Copyright 2024 HIROSE ELECTRIC CO., LTD. All Rights Reserved.  
 In case of consideration for using Automotive equipment / device which demand high reliability, kindly contact our sales window correspondents.



Panel thickness	A
0.5~0.8	16.9
0.9~1.3	17.2
1.4~1.8	17.6
1.9~2.3	18.0

Note 1: Please use non-radius side for the panel hooking area.  
 2: Applicable panel thicknessing is 2.3 to 0.5 mm.  
 3: Consult Hirose for the other panel cutout designs than recommended one.  
 4. Per pack : 100 pieces.  
 5. UL (File No. E52653).  
 C-UL (File No. E52653) authorization article



NO.	MATERIAL	FINISH . REMARKS	NO.	MATERIAL	FINISH . REMARKS		
1	PBT			UL94V-0. BLACK			
UNITS	mm	SCALE	COUNT	DESCRIPTION OF REVISIONS	DESIGNED	CHECKED	DATE
		5 : 1	1	DIS-H-00004547	TS. MIYAKI	SZ. ONO	20181225
APPROVED : HS. OKAWA		20160601		DRAWING NO.		EDC-366297-00-00	
CHECKED : YN. TAKASHITA		20160601		PART NO.		DF51-3EP-2C	
DESIGNED : TT. OHSAKO		20160601		CODE NO.		CL543-5126-0-00	
DRAWN : TT. OHSAKO		20160601				1/1	