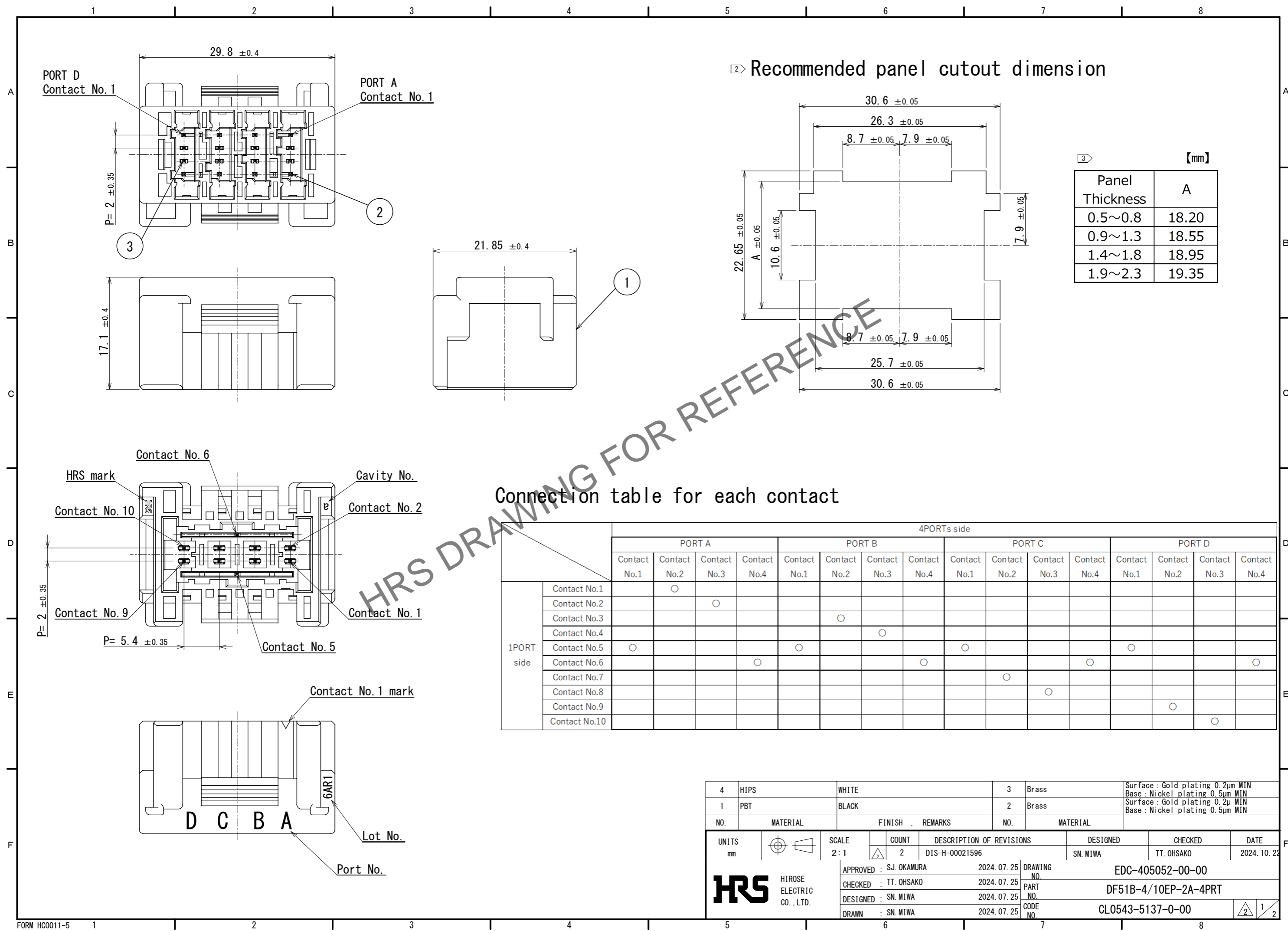


Jan.1.2025 Copyright 2025 HIROSE ELECTRIC CO., LTD. All Rights Reserved.
In case of consideration for using Automotive equipment / device which demand high reliability, kindly contact our sales window correspondents.



2 Recommended panel cutout dimension

3 [mm]

Panel Thickness	A
0.5~0.8	18.20
0.9~1.3	18.55
1.4~1.8	18.95
1.9~2.3	19.35

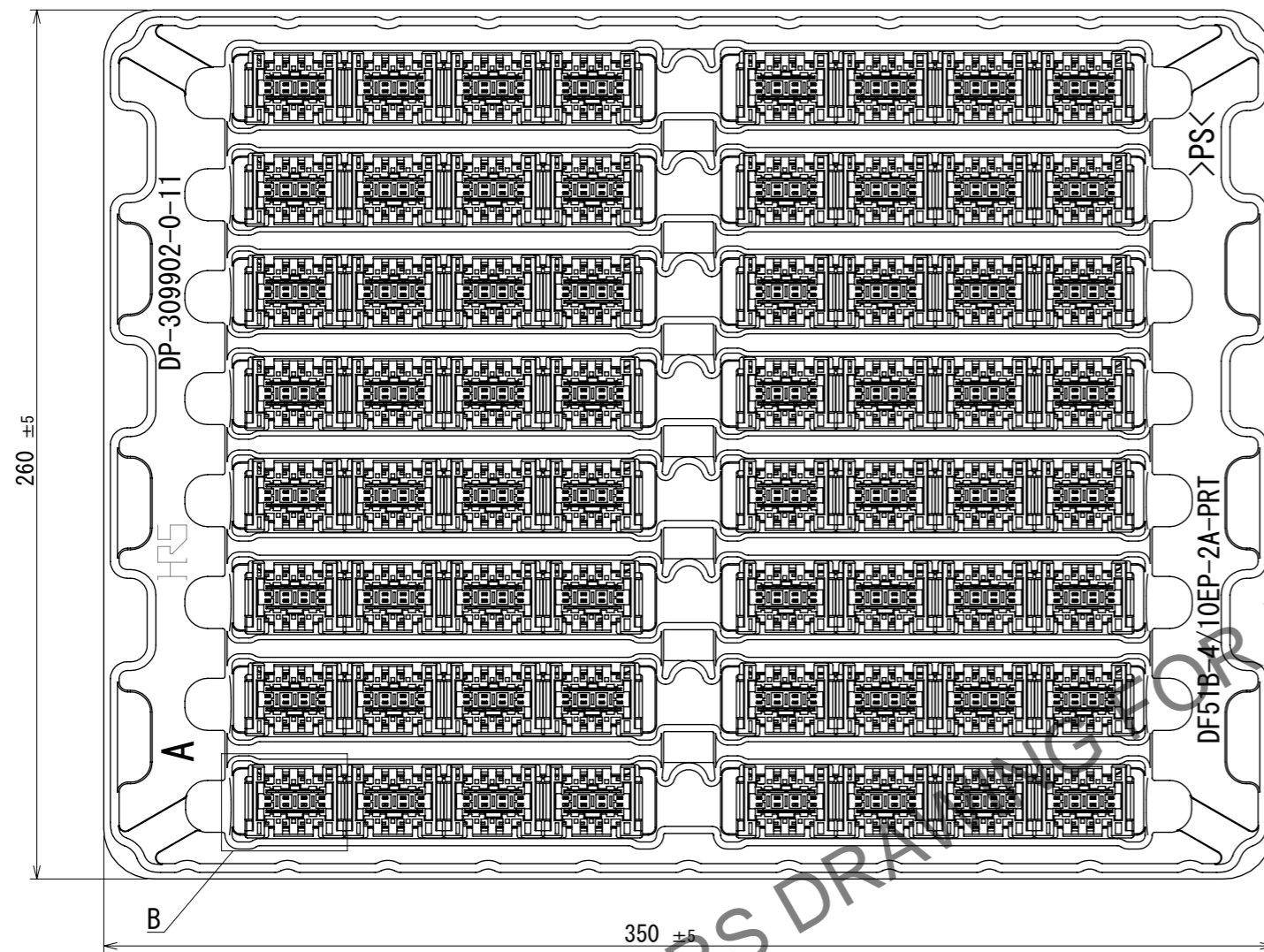
Connection table for each contact

		4PORTs side															
		PORT A				PORT B				PORT C				PORT D			
		Contact No.1	Contact No.2	Contact No.3	Contact No.4	Contact No.1	Contact No.2	Contact No.3	Contact No.4	Contact No.1	Contact No.2	Contact No.3	Contact No.4	Contact No.1	Contact No.2	Contact No.3	Contact No.4
1PORT side	Contact No.1		○														
	Contact No.2			○													
	Contact No.3						○										
	Contact No.4							○									
	Contact No.5	○				○				○				○			
	Contact No.6			○				○				○					○
	Contact No.7										○						
	Contact No.8											○					
	Contact No.9												○				
	Contact No.10													○			

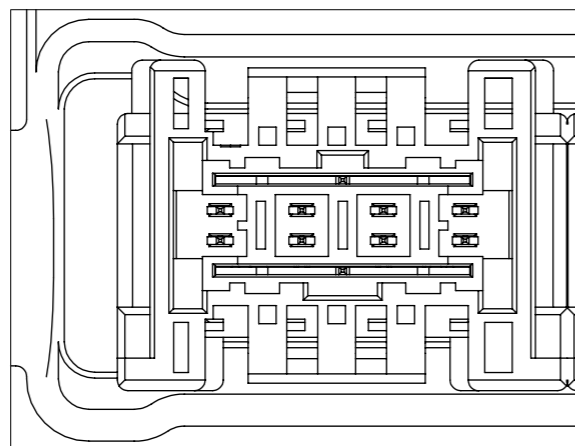
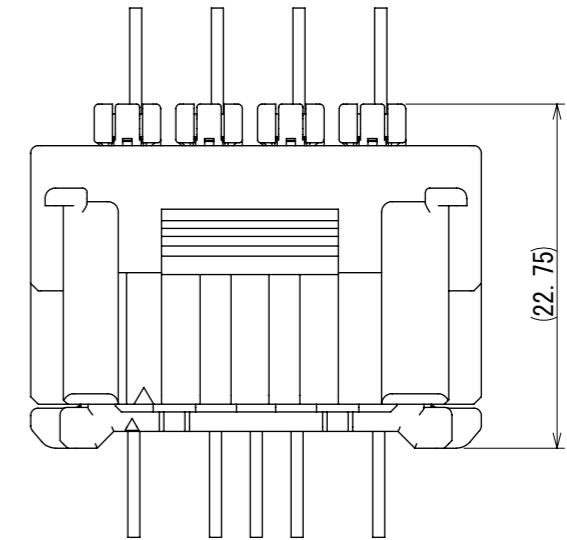
4	HIPS	WHITE	3	Brass	Surface : Gold plating 0.2μm MIN Base : Nickel plating 0.5μm MIN						
1	PBT	BLACK	2	Brass	Surface : Gold plating 0.2μm MIN Base : Nickel plating 0.5μm MIN						
NO.	MATERIAL	FINISH	REMARKS	NO.	MATERIAL						
UNITS	mm	SCALE	2:1	COUNT	2	DESCRIPTION OF REVISIONS	DESIGNED	CHECKED	DATE		
				DIS-H-00021596		SN. MIWA		TT. OHSAKO		2024. 10. 23	
APPROVED : SJ. OKAMURA		2024. 07. 25		DRAWING NO.		EDC-405052-00-00					
CHECKED : TT. OHSAKO		2024. 07. 25		PART NO.		DF51B-4/10EP-2A-4PRT					
DESIGNED : SN. MIWA		2024. 07. 25		CODE NO.		CL0543-5137-0-00					
DRAWN : SN. MIWA		2024. 07. 25									

Jan.1.2025 Copyright 2025 HIROSE ELECTRIC CO., LTD. All Rights Reserved.
 In case of consideration for using Automotive equipment / device which demand high reliability, kindly contact our sales window correspondents.

Packing diagram



Mating diagram



- Note 1. 256 pieces per box \triangle
- \square Use a surface that is free from dripping R on the panel hook.
 - \square Applicable panel thickness is 0.5mm to 2.3mm.
 - 4. Refer to these manuals for handling this connector.
 Cable assembly : ATAD-H0923-00
 Mating and unmating operation : ATAD-H0847-00
 - 5. There may be slight scratches or dents on the appearance, but this does not affect the function.
 - 6. UL (File No.E52653)
 C-UL (File No.E52653) authorization article



\triangle 8. Please refer to the technical specification (ETAP-H1063-01) for the packing type.

HRS	DRAWING NO.	EDC-405052-00-00	\triangle 2 / 2
	PART NO.	DF51B-4/10EP-2A-4PRT	
	CODE NO.	CL0543-5137-0-00	