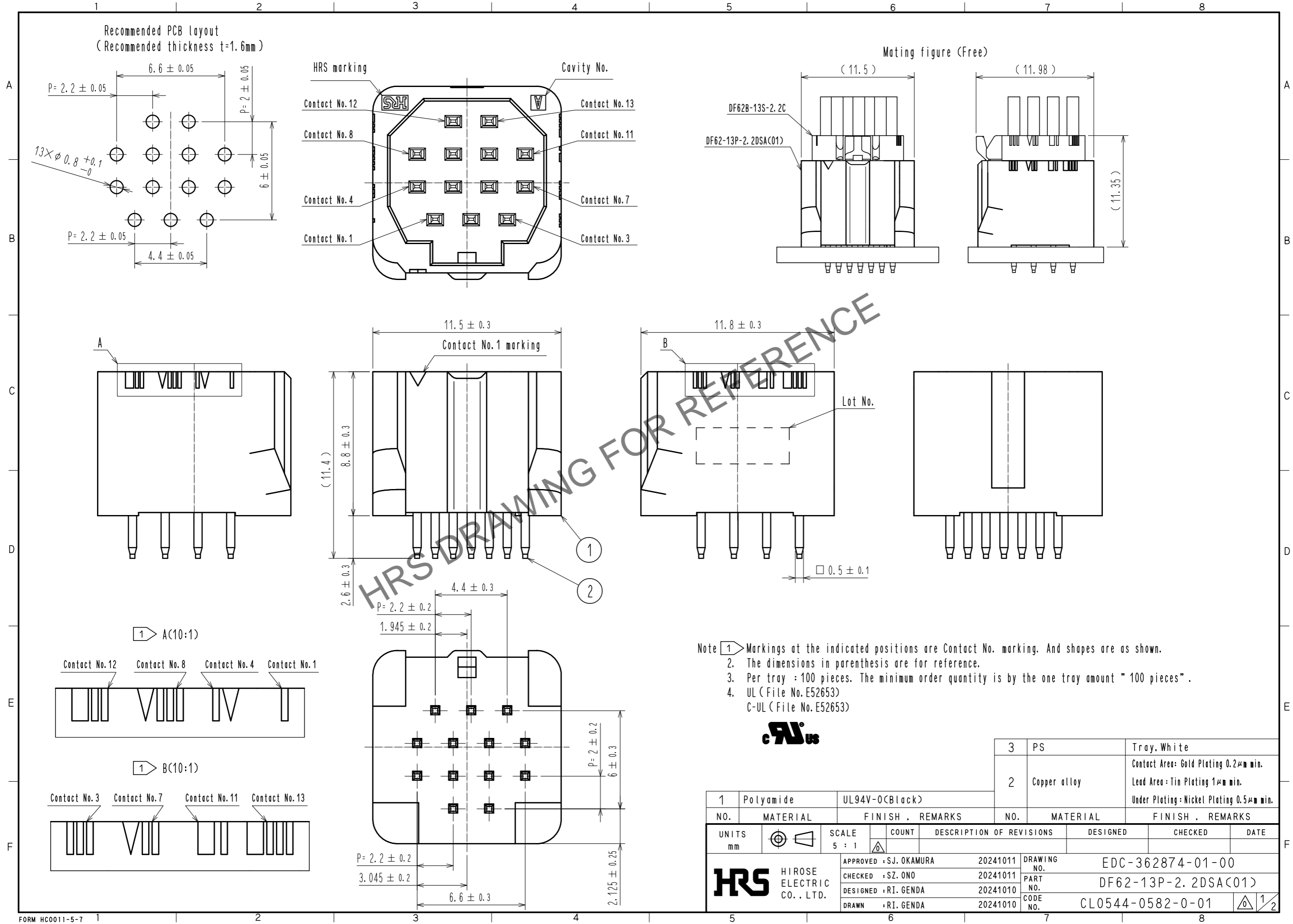


Feb.1.2025 Copyright 2025 HIROSE ELECTRIC CO., LTD. All Rights Reserved.  
 In case of consideration for using Automotive equipment / device which demand high reliability, kindly contact our sales window correspondents.

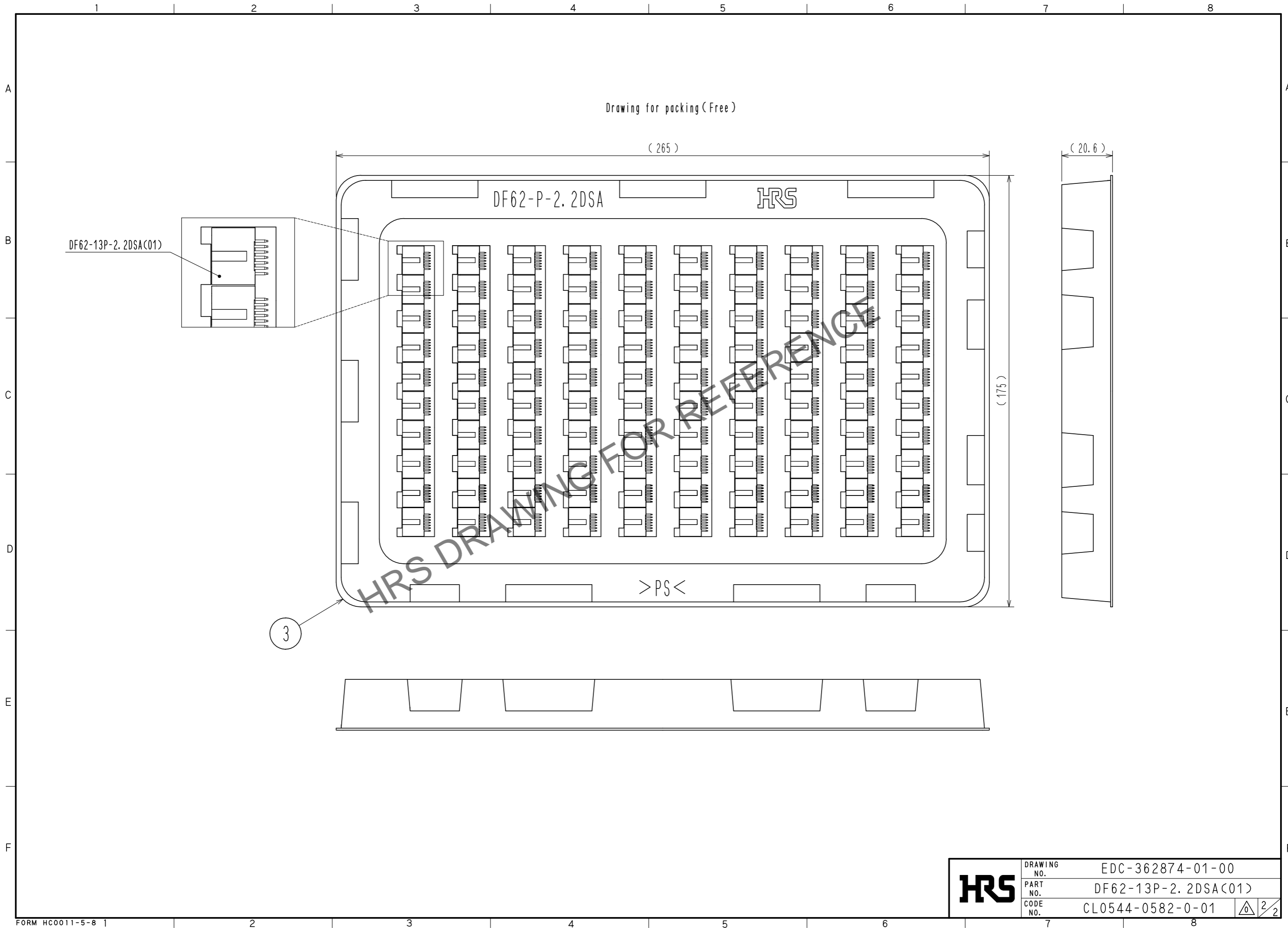


- Note
- 1 Markings at the indicated positions are Contact No. marking. And shapes are as shown.
  - 2 The dimensions in parenthesis are for reference.
  - 3 Per tray : 100 pieces. The minimum order quantity is by the one tray amount " 100 pieces".
  - 4 UL (File No. E52653)  
C-UL (File No. E52653)



1	Polyamide	UL94V-0(Black)	3	PS	Tray, White		
2	Copper alloy		2	Copper alloy	Contact Area: Gold Plating $0.2\mu\text{m}$ min. Lead Area: Tin Plating $1\mu\text{m}$ min. Under Plating: Nickel Plating $0.5\mu\text{m}$ min.		
NO.	MATERIAL	FINISH . REMARKS	NO.	MATERIAL	FINISH . REMARKS		
UNITS		SCALE	COUNT	DESCRIPTION OF REVISIONS	DESIGNED	CHECKED	DATE
mm		5 : 1					
<b>HRS</b> HIROSE ELECTRIC CO., LTD.		APPROVED : SJ. OKAMURA	20241011	DRAWING NO. EDC-362874-01-00			
		CHECKED : SZ. ONO	20241011	PART NO. DF62-13P-2.2DSA(01)			
		DESIGNED : RI. GENDA	20241010	CODE NO. CL0544-0582-0-01			
		DRAWN : RI. GENDA	20241010			1/2	

Feb.1.2025 Copyright 2025 HIROSE ELECTRIC CO., LTD. All Rights Reserved.  
In case of consideration for using Automotive equipment / device which demand high reliability, kindly contact our sales window correspondents.



<b>HRS</b>	DRAWING NO.	EDC-362874-01-00
	PART NO.	DF62-13P-2.2DSA(01)
	CODE NO.	CL0544-0582-0-01