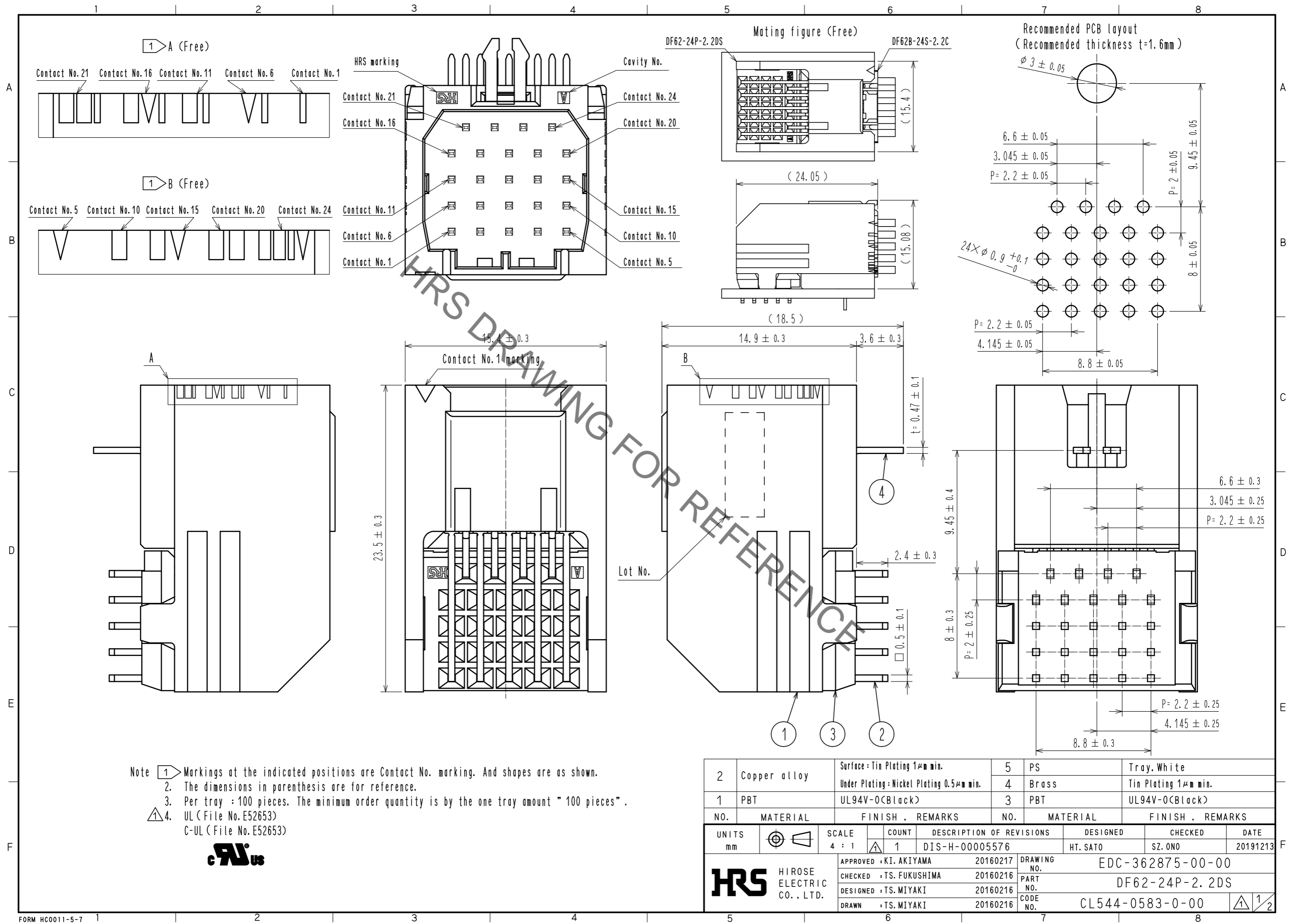


Oct.1.2022 Copyright 2022 HIROSE ELECTRIC CO., LTD. All Rights Reserved.
In case of consideration for using Automotive equipment / device which demand high reliability, kindly contact our sales window correspondents.



Note 1. Markings at the indicated positions are Contact No. marking. And shapes are as shown.
2. The dimensions in parenthesis are for reference.
3. Per tray : 100 pieces. The minimum order quantity is by the one tray amount " 100 pieces".
4. UL (File No. E52653)
C-UL (File No. E52653)



2	Copper alloy	Surface : Tin Plating $1\mu\text{m}$ min. Under Plating : Nickel Plating $0.5\mu\text{m}$ min.	5	PS	Tray, White		
1	PBT	UL94V-0(Black)	4	Brass	Tin Plating $1\mu\text{m}$ min.		
			3	PBT	UL94V-0(Black)		
NO.	MATERIAL	FINISH . REMARKS	NO.	MATERIAL	FINISH . REMARKS		
UNITS mm		SCALE 4 : 1	COUNT 1	DESCRIPTION OF REVISIONS DIS-H-00005576	DESIGNED HT. SATO	CHECKED SZ. ONO	DATE 20191213
HRS HIROSE ELECTRIC CO., LTD.		APPROVED : KI. AKIYAMA 20160217	DRAWING NO. EDC-362875-00-00				
		CHECKED : TS. FUKUSHIMA 20160216	PART NO. DF62-24P-2.2DS				
		DESIGNED : TS. MIYAKI 20160216	CODE NO. CL544-0583-0-00				
		DRAWN : TS. MIYAKI 20160216					

Oct.1.2022 Copyright 2022 HIROSE ELECTRIC CO., LTD. All Rights Reserved.
In case of consideration for using Automotive equipment / device which demand high reliability, kindly contact our sales window correspondents.

Drawing for packing (Free)

(345)

(22.5)

(255)

HRS

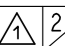
DF62-24P-2.2DS

DF62-24P-2.2DS

QTY. 100

> PS <

5

HRS	DRAWING NO.	EDC-362875-00-00
	PART NO.	DF62-24P-2.2DS
	CODE NO.	CL544-0583-0-00
		 2/2