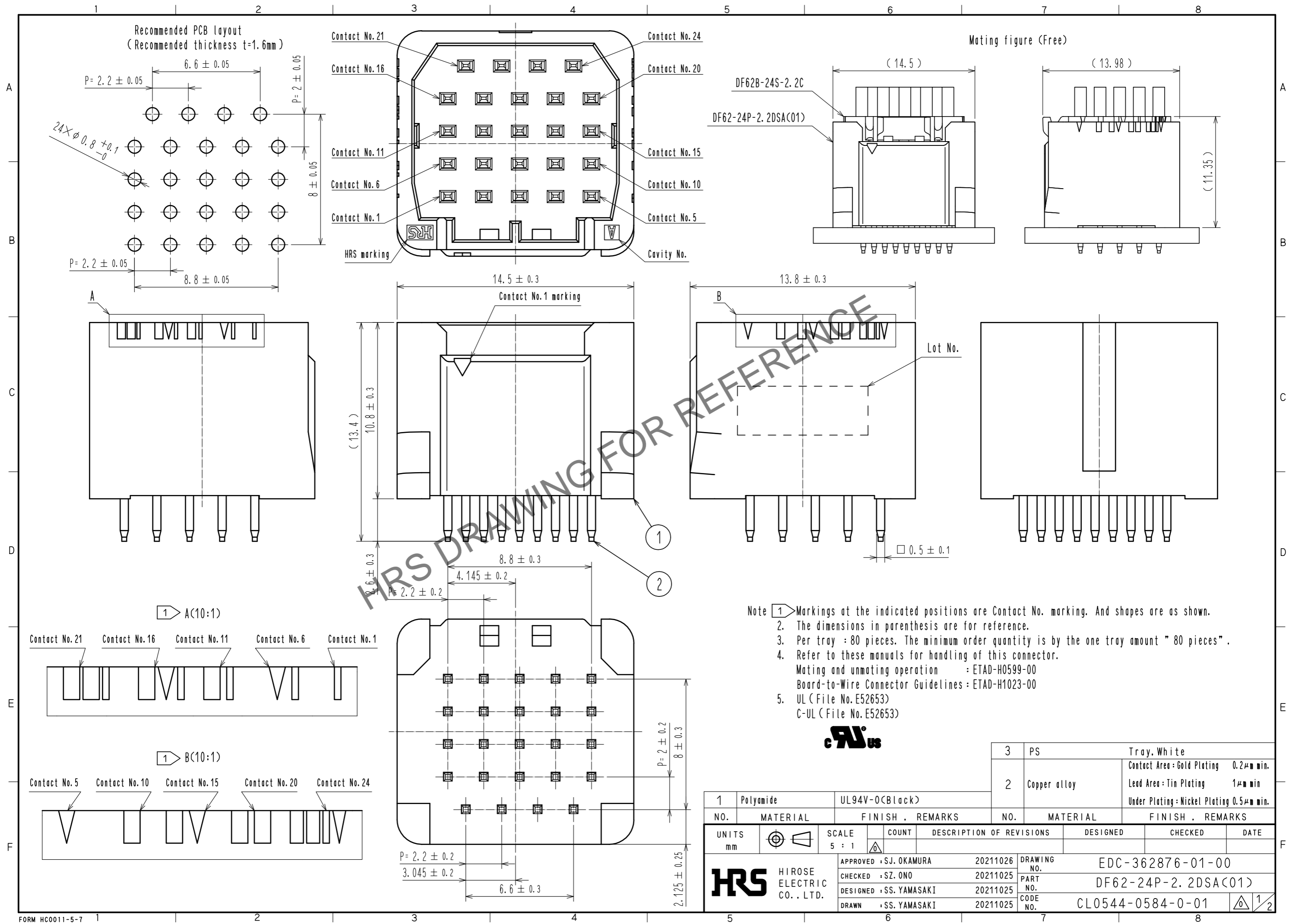
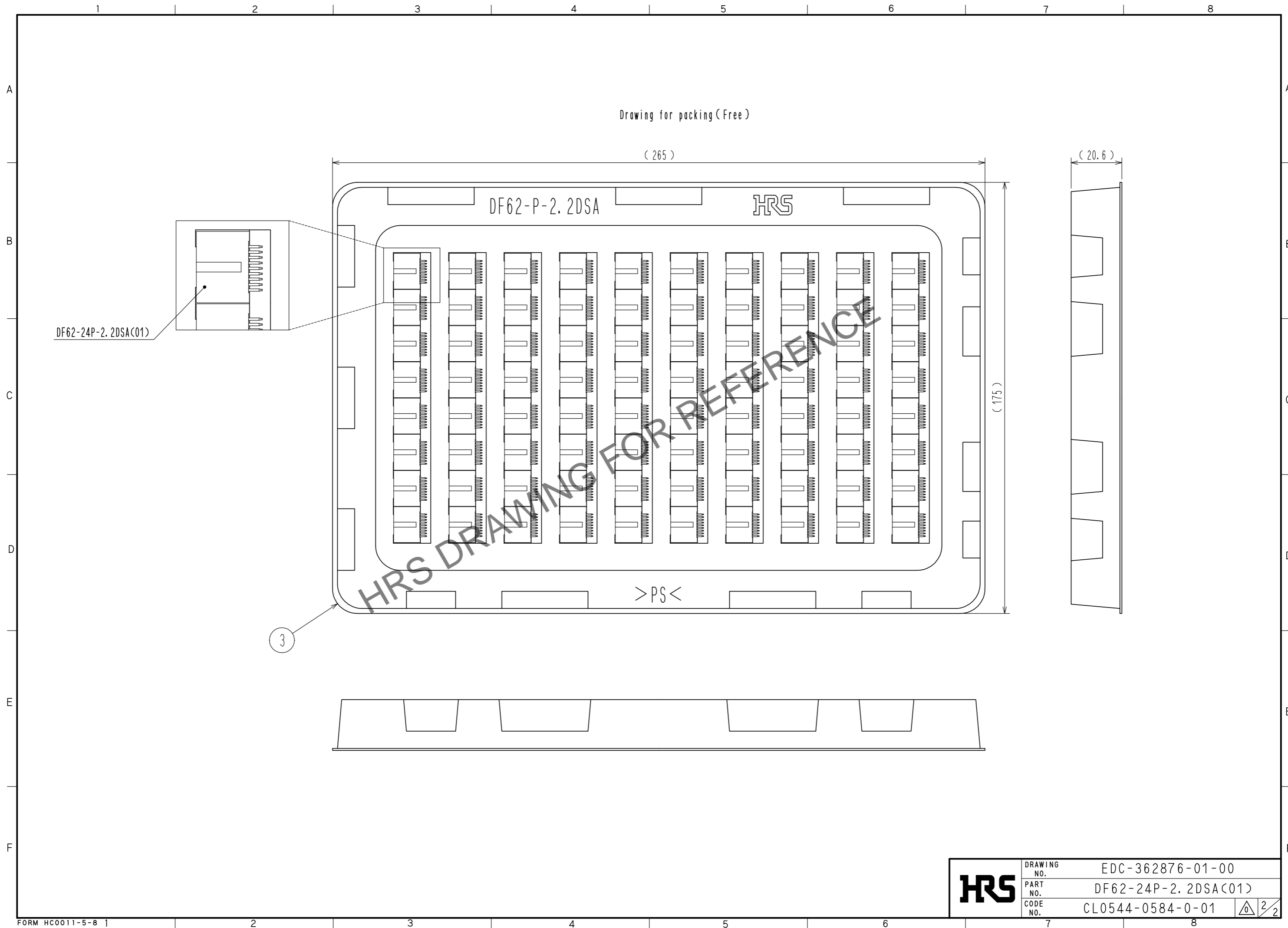


Feb.1.2025 Copyright 2025 HIROSE ELECTRIC CO., LTD. All Rights Reserved.
 In case of consideration for using Automotive equipment / device which demand high reliability, kindly contact our sales window correspondents.



1		Polyamide	UL94V-0(Black)	3		PS	Tray, White	
2		Copper alloy		2		Copper alloy	Contact Area : Gold Plating 0.2μm min. Lead Area : Tin Plating 1μm min. Under Plating : Nickel Plating 0.5μm min.	
NO.	MATERIAL	FINISH . REMARKS		NO.	MATERIAL	FINISH . REMARKS		
UNITS		SCALE	COUNT	DESCRIPTION OF REVISIONS		DESIGNED	CHECKED	DATE
mm		5 : 1						
HRS HIROSE ELECTRIC CO., LTD.		APPROVED : SJ. OKAMURA	20211026	DRAWING NO.		EDC-362876-01-00		
		CHECKED : SZ. ONO	20211025	PART NO.		DF62-24P-2.2DSA(01)		
		DESIGNED : SS. YAMASAKI	20211025	CODE NO.		CL0544-0584-0-01		
		DRAWN : SS. YAMASAKI	20211025					

Feb.1.2025 Copyright 2025 HIROSE ELECTRIC CO., LTD. All Rights Reserved.
In case of consideration for using Automotive equipment / device which demand high reliability, kindly contact our sales window correspondents.



HRS	DRAWING NO.	EDC-362876-01-00
	PART NO.	DF62-24P-2.2DSA(01)
	CODE NO.	CL0544-0584-0-01

2/2