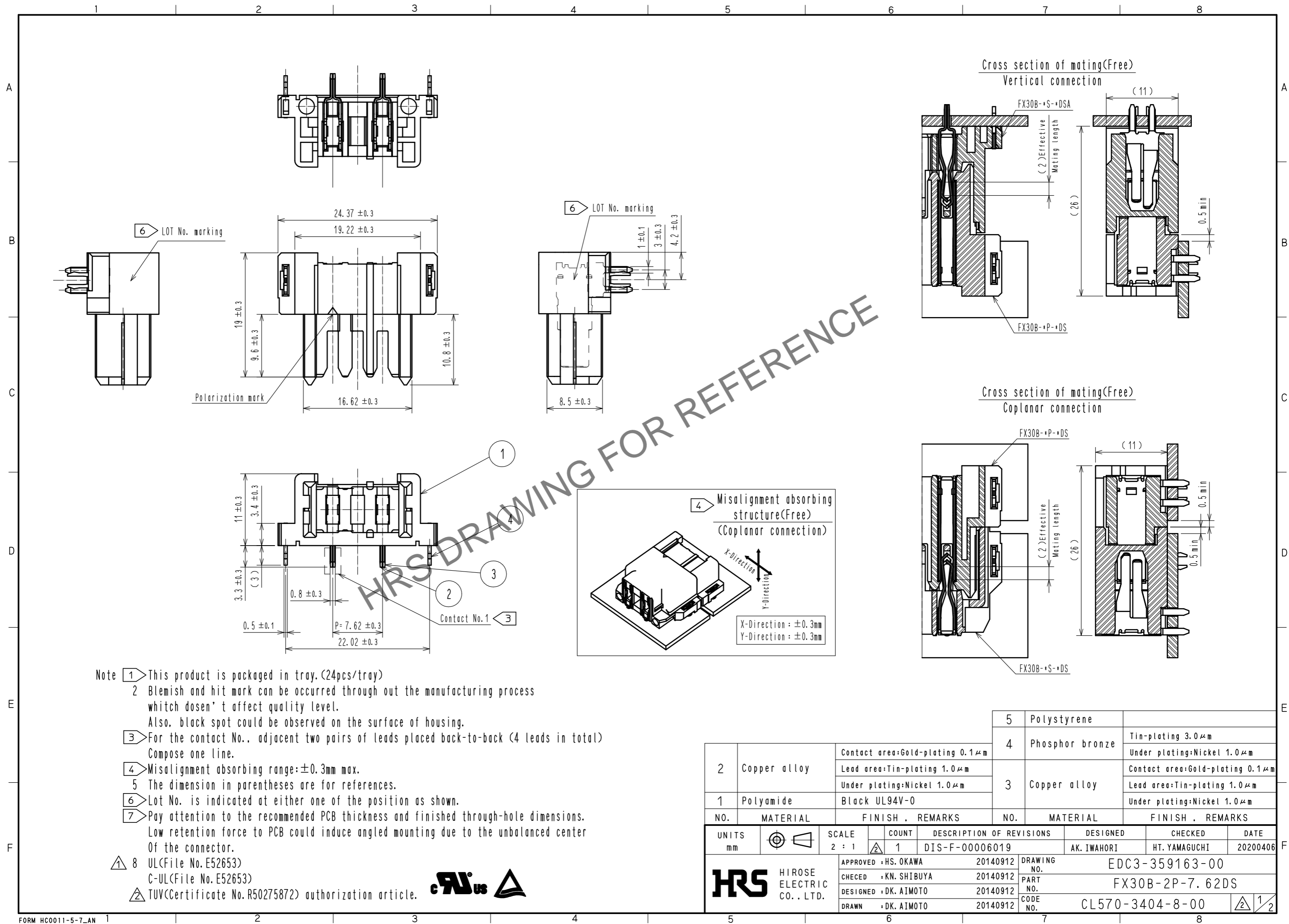
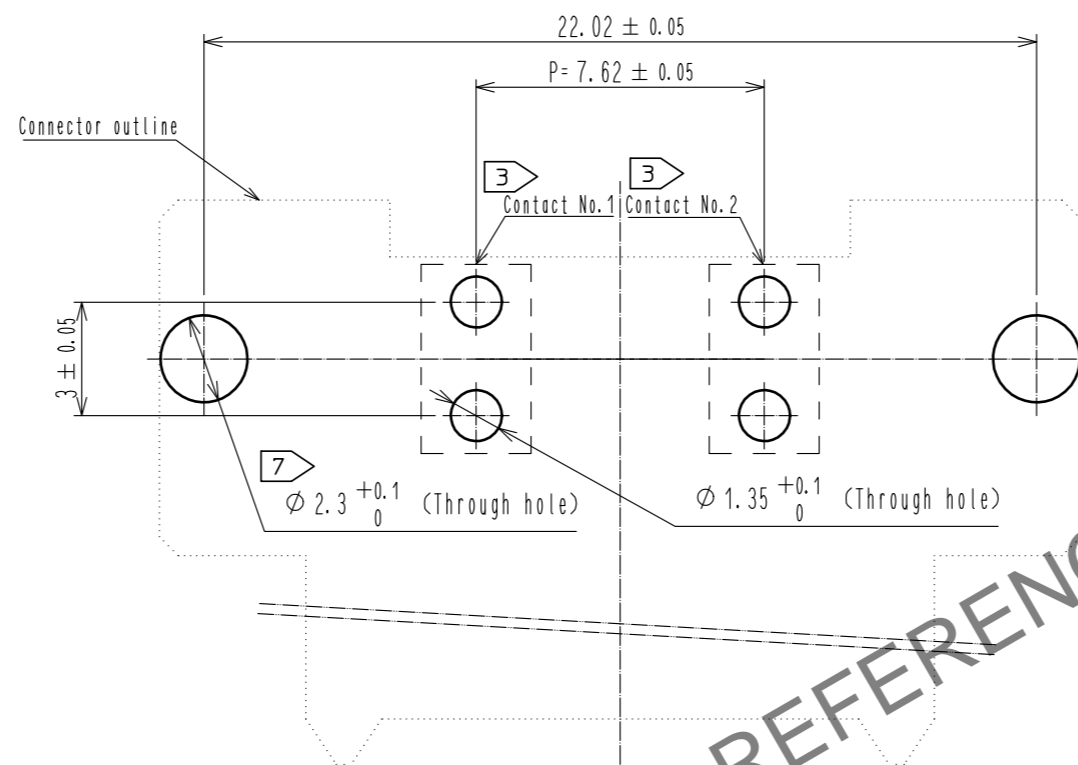


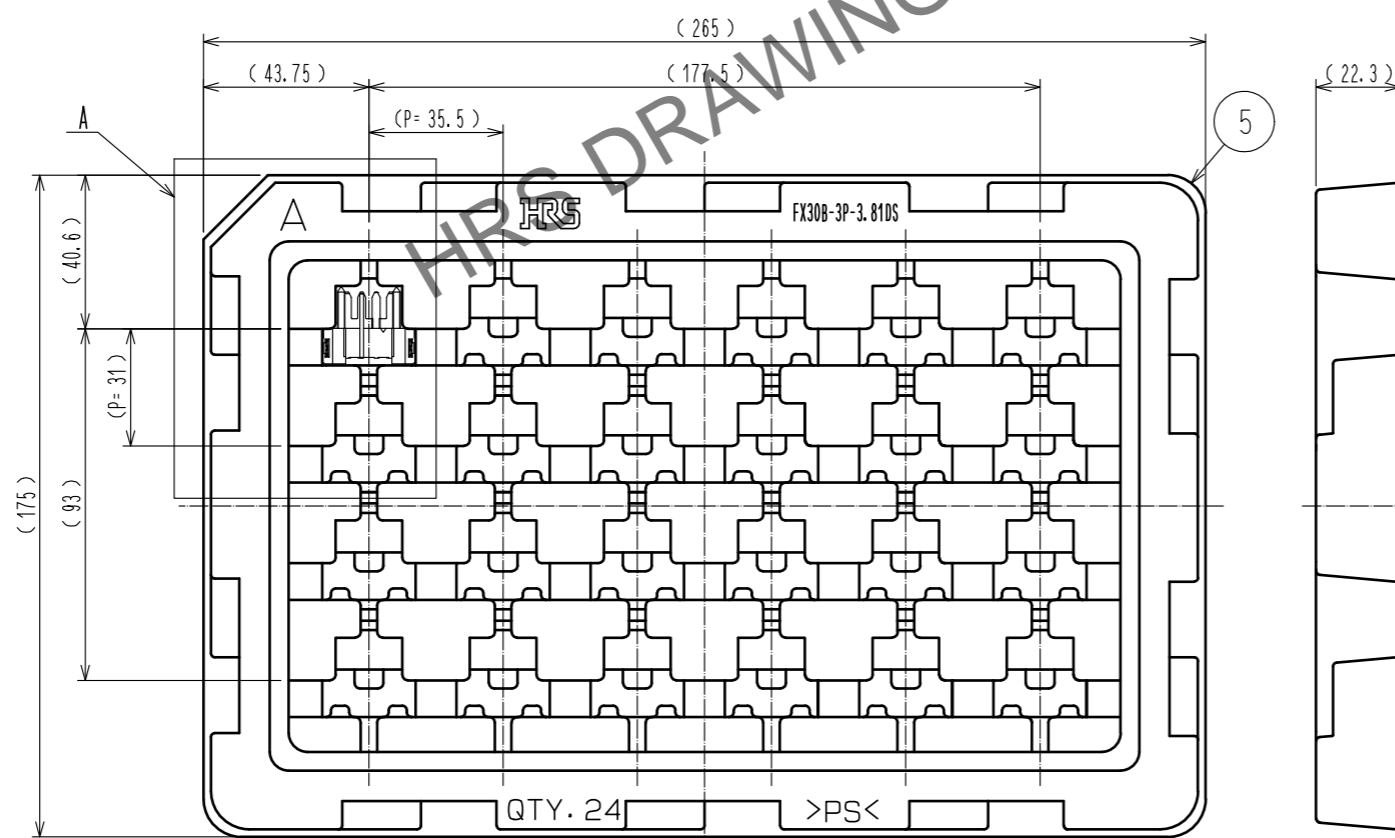
May.1.2024 Copyright 2024 HIROSE ELECTRIC CO., LTD. All Rights Reserved.
In case of consideration for using Automotive equipment / device which demand high reliability, kindly contact our sales window correspondents.



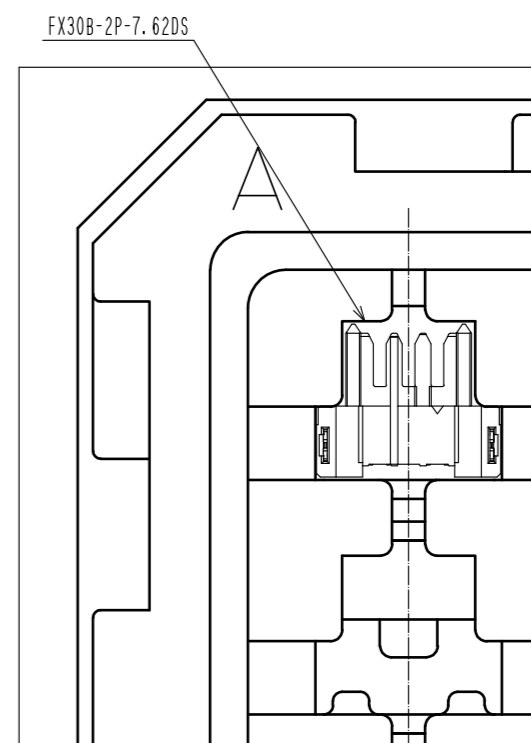
Recommended hole pattern dimension of PCB(5:1)
(Connector mounting side, PCB thickness:t=1.6mm) 



 Drawing for packaging(1:2)

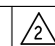


A(1:1)



HRS

DRAWING NO.	EDC3-359163-00
PART NO.	FX30B-2P-7.62DS
CODE NO.	CL570-3404-8-00

 2/2