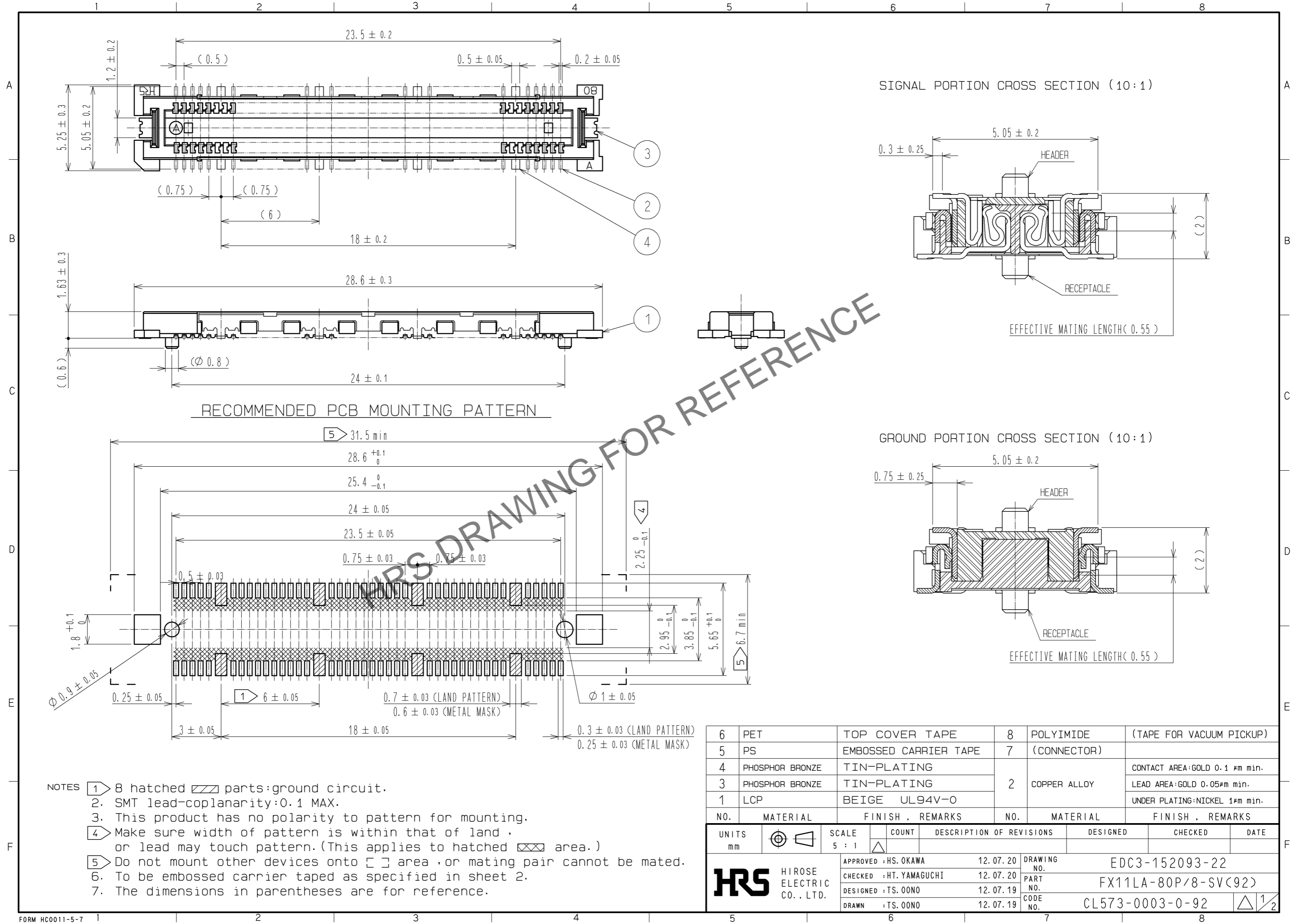


Aug.1.2024 Copyright 2024 HIROSE ELECTRIC CO., LTD. All Rights Reserved.
 In case of consideration for using Automotive equipment / device which demand high reliability, kindly contact our sales window correspondents.

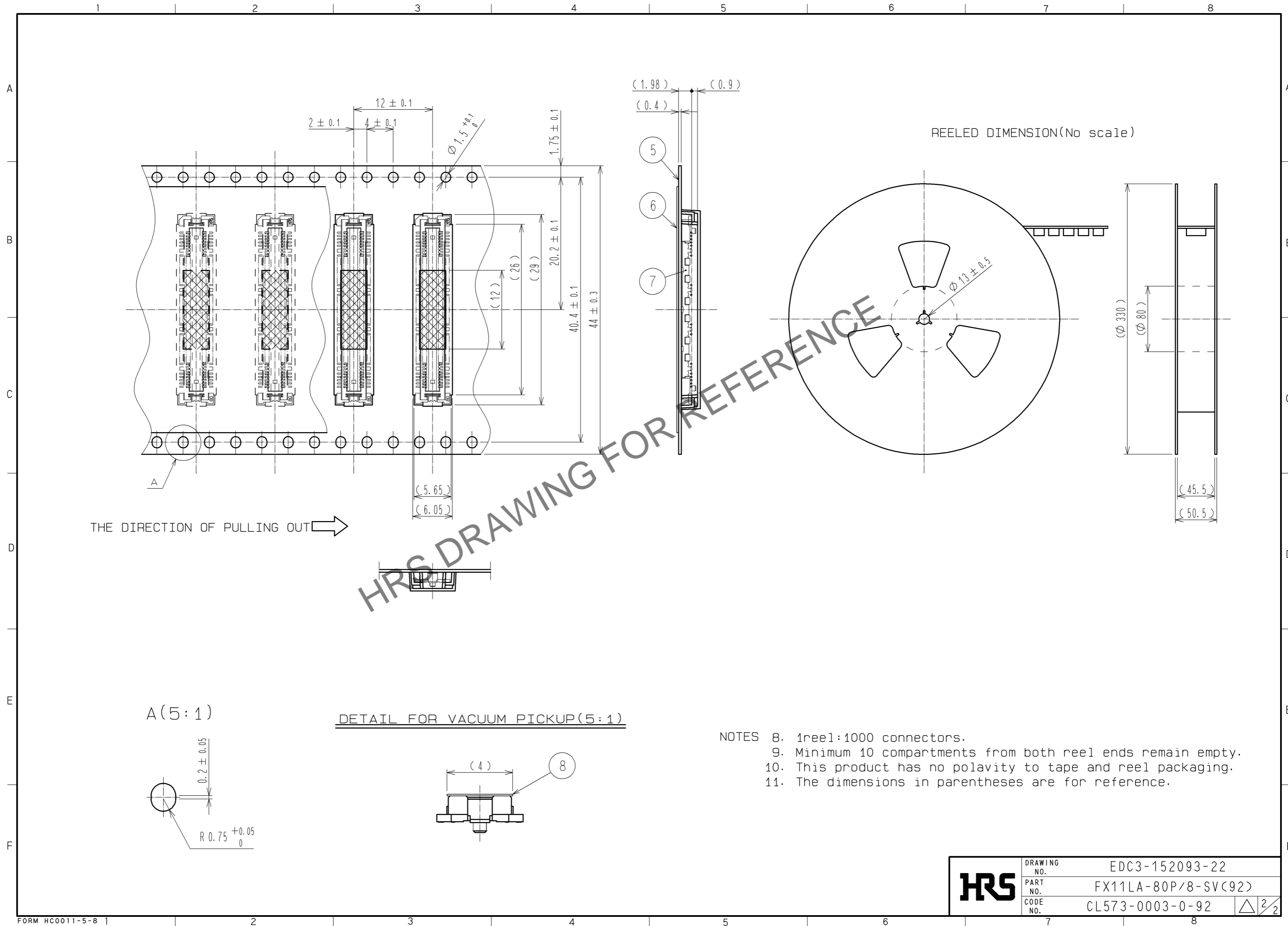


RECOMMENDED PCB MOUNTING PATTERN

- NOTES
- 8 hatched parts: ground circuit.
 - SMT lead-coplanarity: 0.1 MAX.
 - This product has no polarity to pattern for mounting.
 - Make sure width of pattern is within that of land, or lead may touch pattern. (This applies to hatched area.)
 - Do not mount other devices onto area, or mating pair cannot be mated.
 - To be embossed carrier taped as specified in sheet 2.
 - The dimensions in parentheses are for reference.

6	PET	TOP COVER TAPE	8	POLYIMIDE	(TAPE FOR VACUUM PICKUP)
5	PS	EMBOSSD CARRIER TAPE	7	(CONNECTOR)	
4	PHOSPHOR BRONZE	TIN-PLATING	2	COPPER ALLOY	CONTACT AREA: GOLD 0.1 μm min.
3	PHOSPHOR BRONZE	TIN-PLATING			LEAD AREA: GOLD 0.05 μm min.
1	LCP	BEIGE UL94V-0			UNDER PLATING: NICKEL 1 μm min.
NO.	MATERIAL	FINISH . REMARKS	NO.	MATERIAL	FINISH . REMARKS
UNITS mm		SCALE 5 : 1	COUNT △	DESCRIPTION OF REVISIONS	
DESIGNED		CHECKED		DATE	
APPROVED : HS. OKAWA			12.07.20		
CHECKED : HT. YAMAGUCHI			12.07.20		
DESIGNED : TS. OONO			12.07.19		
DRAWN : TS. OONO			12.07.19		
DRAWING NO.				EDC3-152093-22	
PART NO.				FX11LA-80P/8-SV(92)	
CODE NO.				CL573-0003-0-92	
				△ 1/2	

Aug.1.2024 Copyright 2024 HIROSE ELECTRIC CO., LTD. All Rights Reserved.
 In case of consideration for using Automotive equipment / device which demand high reliability, kindly contact our sales window correspondents.



HRS	DRAWING NO.	EDC3-152093-22
	PART NO.	FX11LA-80P/8-SV(92)
	CODE NO.	CL573-0003-0-92
		\triangle 2/2