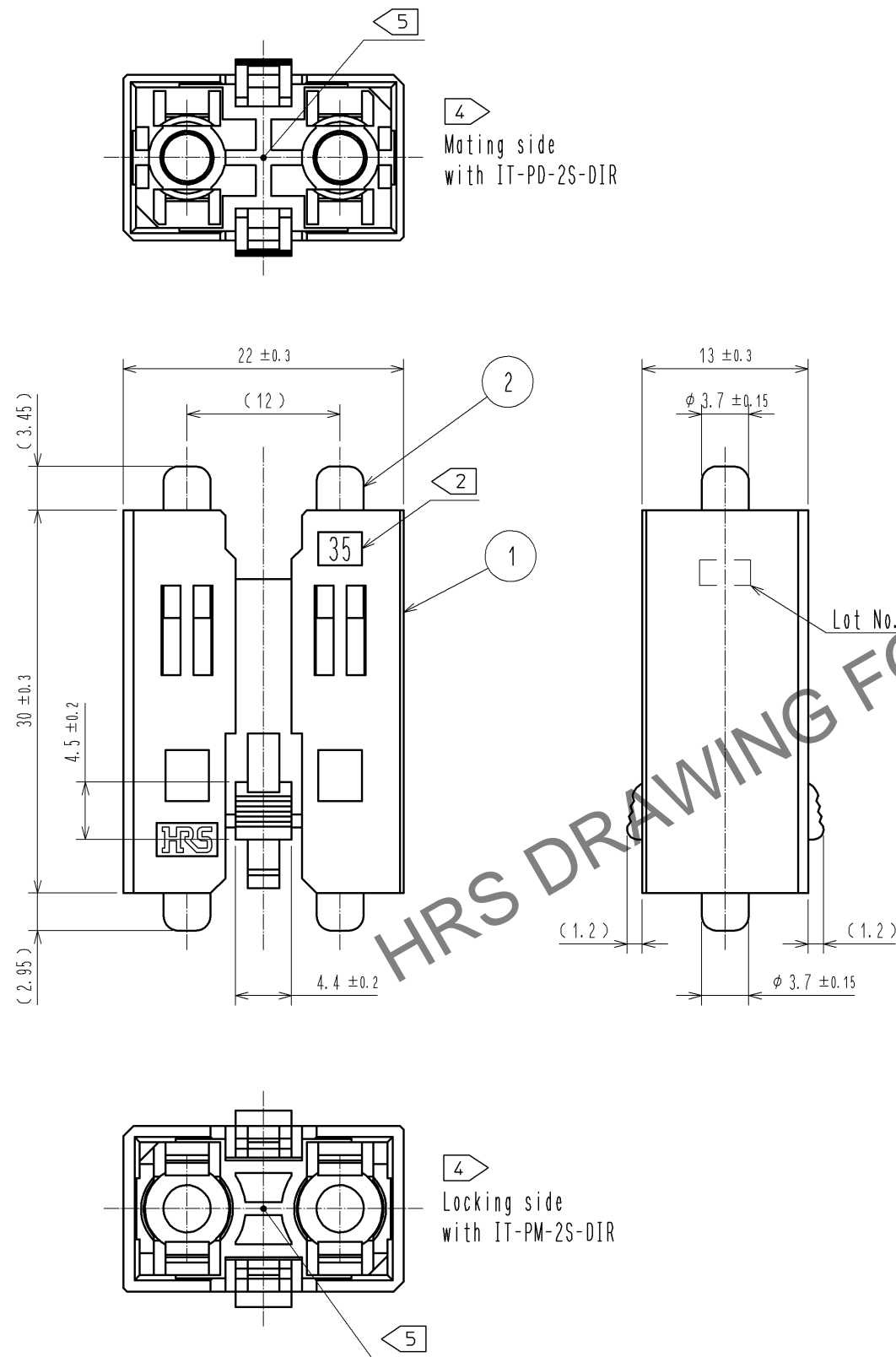
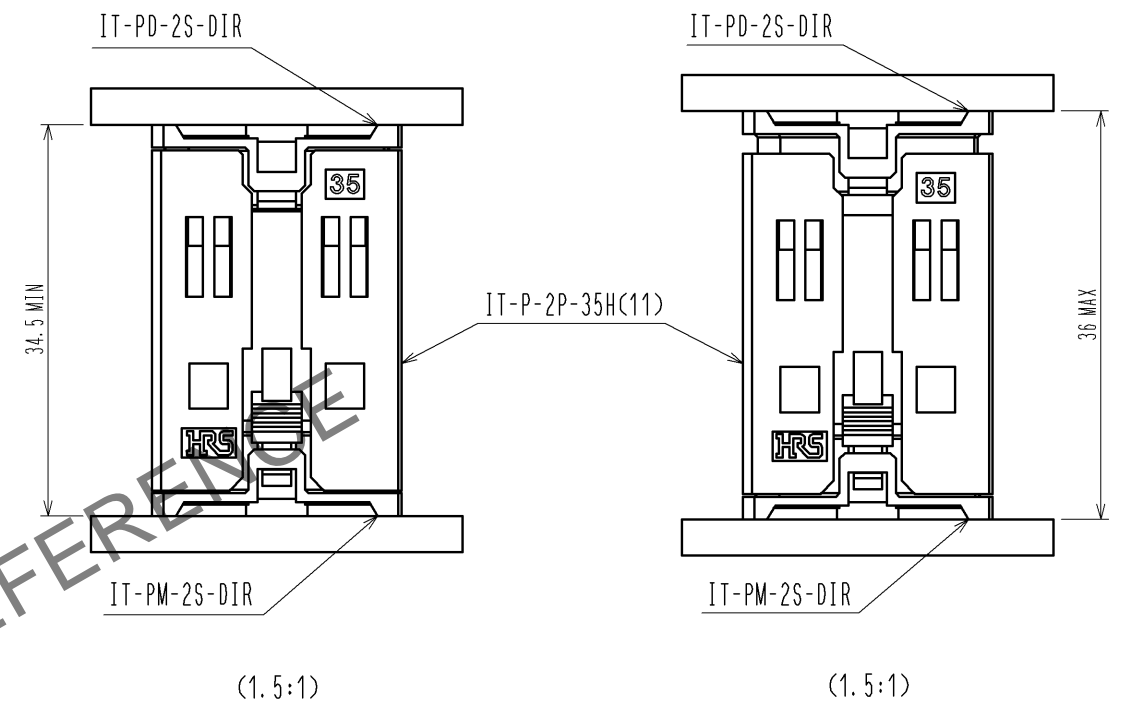



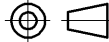
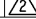



Jun.1.2024 Copyright 2024 HIROSE ELECTRIC CO., LTD. All Rights Reserved.  
In case of consideration for using Automotive equipment / device which demand high reliability, kindly contact our sales window correspondents.



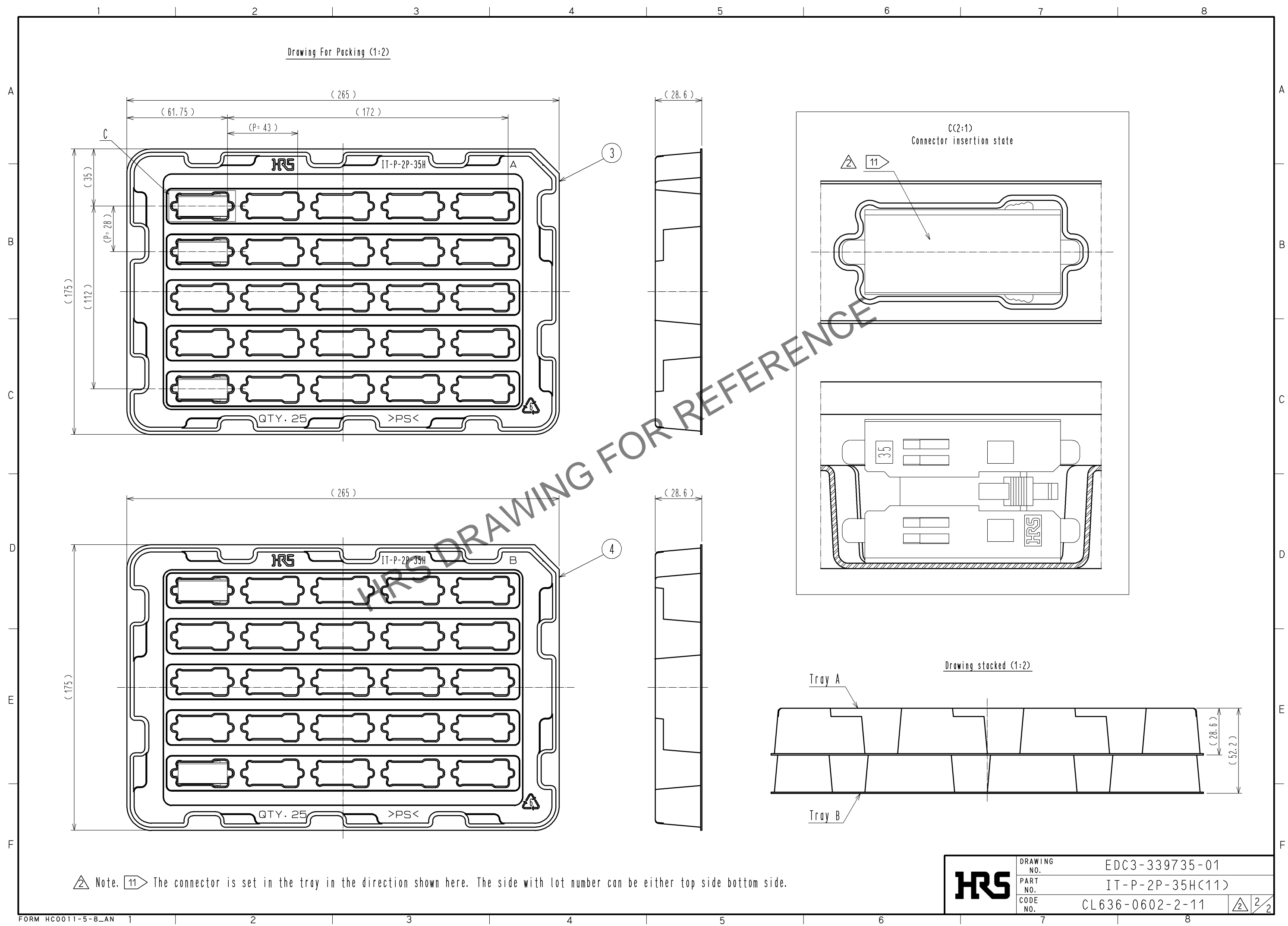
## PCB BOARD TO BOARD STACKING HEIGHT RANGE



- Note.
- 1 The lot number is marked in this area.
  - 2 Stack height(Nominal)is shown.
  - 3 The dimensions in parentheses are for reference.
  - 4 Engageable receptacle is defined for each side of this product.
  - 5 Since this product is point symmetry, direction of mating does not have a rule.
  - 6 Manufacturing process could leave scratch and/or punch marks, but they have no effect on the product performance.
  - 7 Since silver plating is used for this product, if it is left in the atmosphere for a long time, plating may become drab.
  - 8 This product is RoHS compliant.
  - 9 This product is packaged in tray. (Max 25pcs/Tray)
  - 10 This part can accommodate the PCB board to board stacking height range of 35 +1/-0.5mm (34.5mm to 36mm).

2	Copper 	Over Plating : Silver 5.1μm		4	Polystyrene	(Tray B)		
1	PBT	Black UL94V-0		3	Polystyrene	(Tray A)		
NO.	MATERIAL	FINISH . REMARKS		NO.	MATERIAL	FINISH . REMARKS		
UNITS mm		SCALE 2 : 1	COUNT  4	DESCRIPTION OF REVISIONS DIS-F-006732		DESIGNED TF. SUGAWARA	CHECKED MK. NAGATA	DATE 13. 04. 01
 HIROSE ELECTRIC CO., LTD.		APPROVED : MK. EZAKI	12. 11. 14		DRAWING NO. EDC3-339735-01			
		CHECED : MK. EZAKI	12. 11. 14		PART NO. IT-P-2P-35H(11)			
		DESIGNED : MK. NAGATA	12. 11. 14		CODE NO. CL636-0602-2-11			
		DRAWN : MK. NAGATA	12. 11. 14		 			

Jun.1.2024 Copyright 2024 HIROSE ELECTRIC CO., LTD. All Rights Reserved.  
In case of consideration for using Automotive equipment / device which demand high reliability, kindly contact our sales window correspondents.



Note. 11 The connector is set in the tray in the direction shown here. The side with lot number can be either top side bottom side.

<b>HR5</b>	DRAWING NO.	EDC3-339735-01
	PART NO.	IT-P-2P-35H(11)
	CODE NO.	CL636-0602-2-11
		2/2