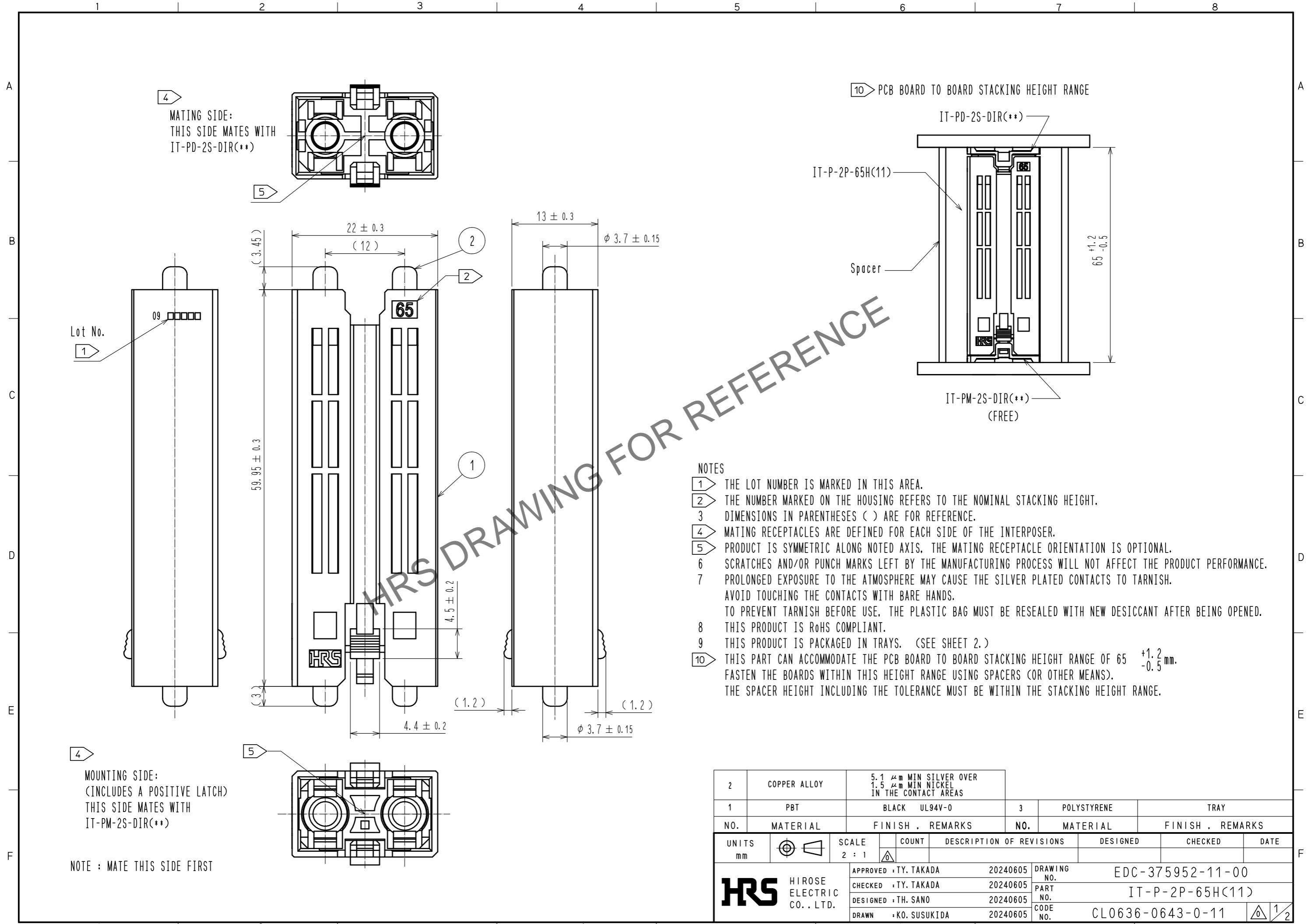


Jan.1.2025 Copyright 2025 HIROSE ELECTRIC CO., LTD. All Rights Reserved.  
In case of consideration for using Automotive equipment / device which demand high reliability, kindly contact our sales window correspondents.

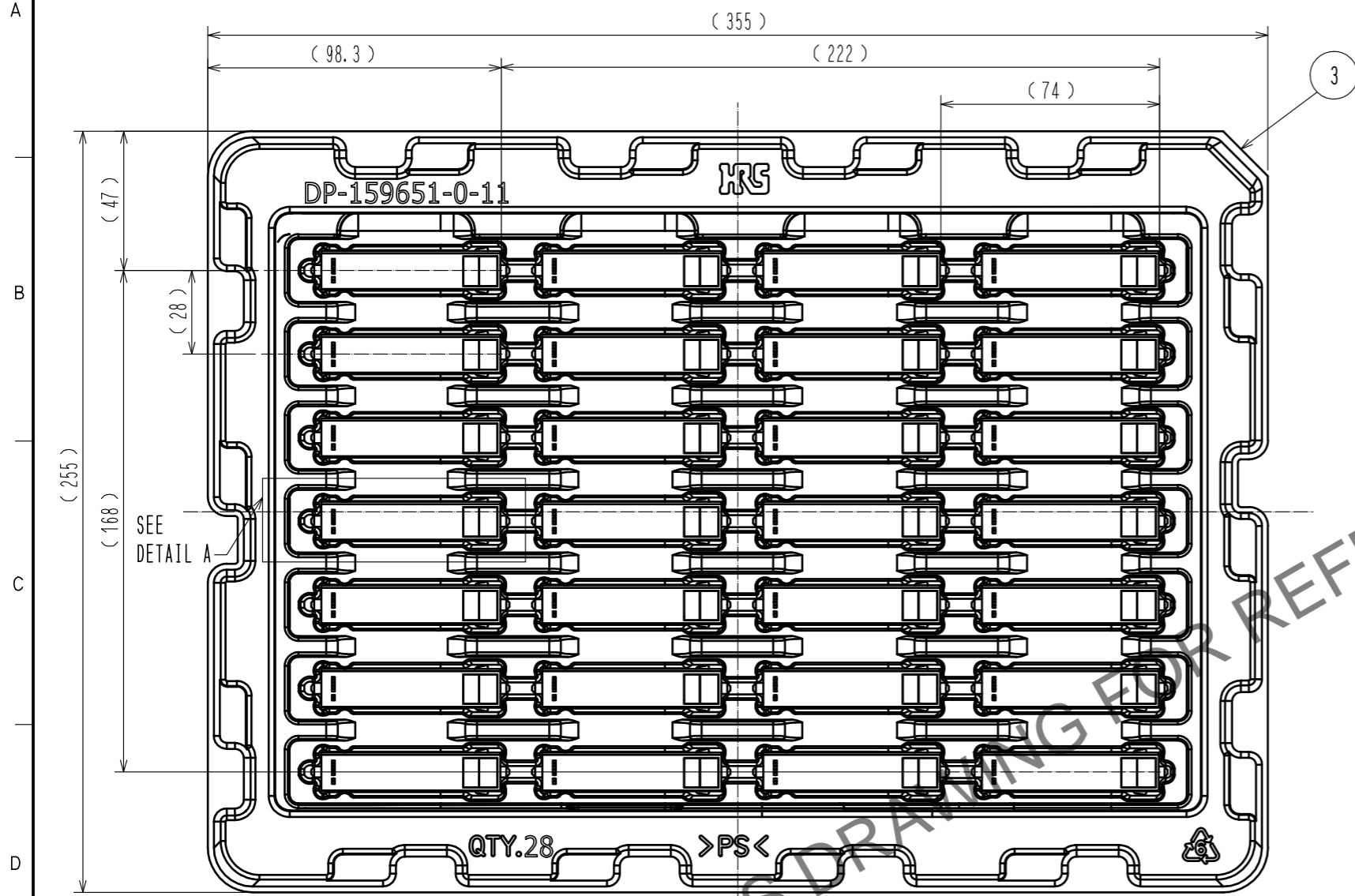


- NOTES
- 1** THE LOT NUMBER IS MARKED IN THIS AREA.
  - 2** THE NUMBER MARKED ON THE HOUSING REFERS TO THE NOMINAL STACKING HEIGHT.
  - 3** DIMENSIONS IN PARENTHESES ( ) ARE FOR REFERENCE.
  - 4** MATING RECEPTACLES ARE DEFINED FOR EACH SIDE OF THE INTERPOSER.
  - 5** PRODUCT IS SYMMETRIC ALONG NOTED AXIS, THE MATING RECEPTACLE ORIENTATION IS OPTIONAL.
  - 6** SCRATCHES AND/OR PUNCH MARKS LEFT BY THE MANUFACTURING PROCESS WILL NOT AFFECT THE PRODUCT PERFORMANCE.
  - 7** PROLONGED EXPOSURE TO THE ATMOSPHERE MAY CAUSE THE SILVER PLATED CONTACTS TO TARNISH. AVOID TOUCHING THE CONTACTS WITH BARE HANDS. TO PREVENT TARNISH BEFORE USE, THE PLASTIC BAG MUST BE RESEALED WITH NEW DESICCANT AFTER BEING OPENED.
  - 8** THIS PRODUCT IS RoHS COMPLIANT.
  - 9** THIS PRODUCT IS PACKAGED IN TRAYS. (SEE SHEET 2.)
  - 10** THIS PART CAN ACCOMMODATE THE PCB BOARD TO BOARD STACKING HEIGHT RANGE OF  $65 \pm 1.2$  mm. FASTEN THE BOARDS WITHIN THIS HEIGHT RANGE USING SPACERS (OR OTHER MEANS). THE SPACER HEIGHT INCLUDING THE TOLERANCE MUST BE WITHIN THE STACKING HEIGHT RANGE.

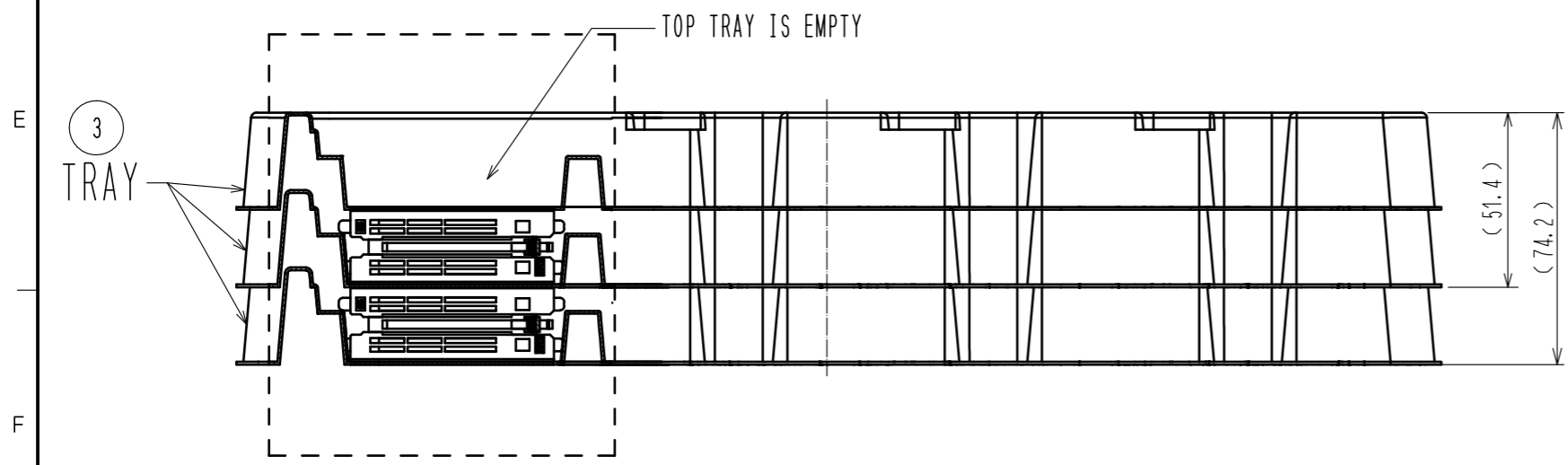
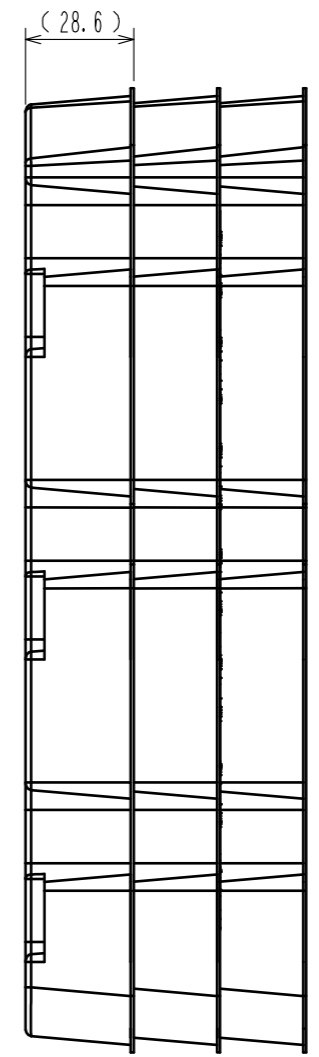
2	COPPER ALLOY	5.1 μm MIN SILVER OVER 1.5 μm MIN NICKEL IN THE CONTACT AREAS		3	POLYSTYRENE	TRAY
1	PBT	BLACK	UL94V-0			
NO.	MATERIAL	FINISH	REMARKS	NO.	MATERIAL	FINISH . REMARKS
UNITS	mm	SCALE	2 : 1	COUNT	DESCRIPTION OF REVISIONS	
					DESIGNED	CHECKED
					DATE	
<b>HRS</b> HIROSE ELECTRIC CO., LTD.		APPROVED : TY. TAKADA	20240605	DRAWING NO.	EDC-375952-11-00	
		CHECKED : TY. TAKADA	20240605	PART NO.	IT-P-2P-65H(11)	
		DESIGNED : TH. SANO	20240605	CODE NO.	CL0636-0643-0-11	
		DRAWN : KO. SUSUKIDA	20240605			

Jan.1.2025 Copyright 2025 HIROSE ELECTRIC CO., LTD. All Rights Reserved.  
In case of consideration for using Automotive equipment / device which demand high reliability, kindly contact our sales window correspondents.

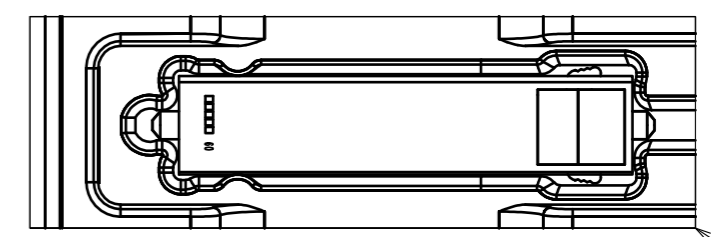
TRAY PACKAGING DIMENSIONS (1:2)



(TOP TRAY REMOVED TO SHOWN PRODUCT)



DETAIL A (1:1)



THE CONNECTOR IS PLACED IN THE POCKET OF THE TRAY AS SHOWN.

ASSEMBLY DRAWING	<b>HRS</b>	DRAWING NO.	EDC-375952-11-00
		PART NO.	IT-P-2P-65H(11)
		CODE NO.	CL0636-0643-0-11
			2/2