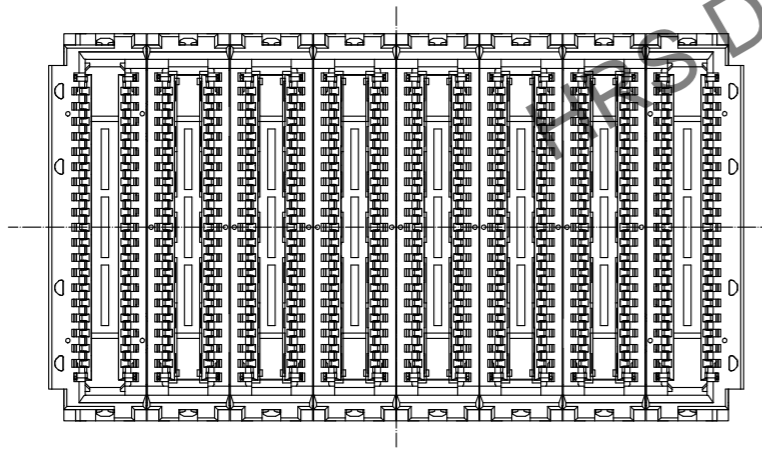
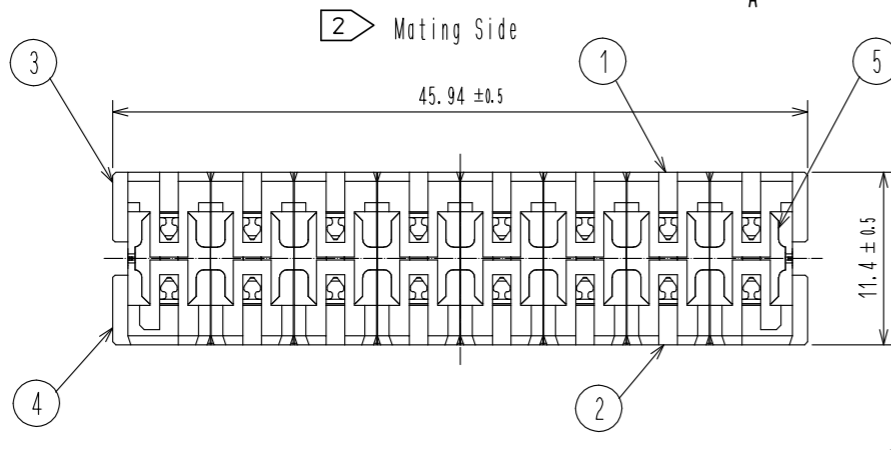
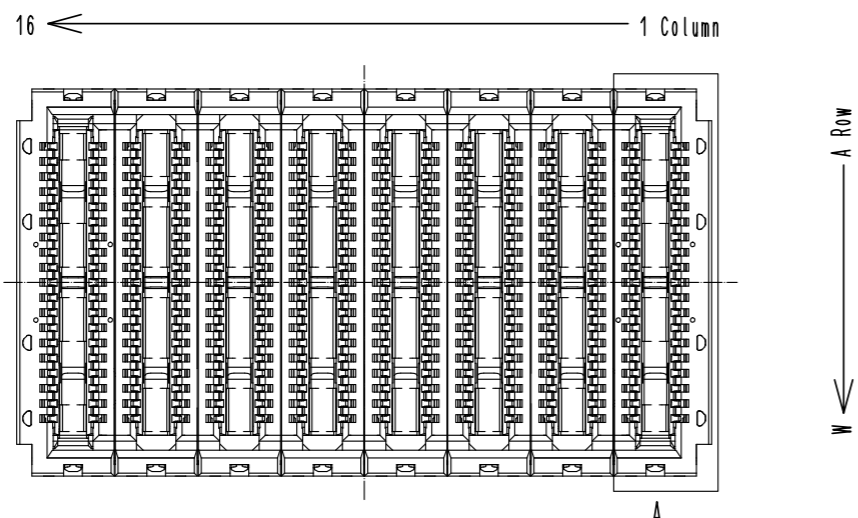


Mar.1.2025 Copyright 2025 HIROSE ELECTRIC CO., LTD. All Rights Reserved.  
In case of consideration for using Automotive equipment / device which demand high reliability, kindly contact our sales window correspondents.

1 2 3 4 5 6 7 8

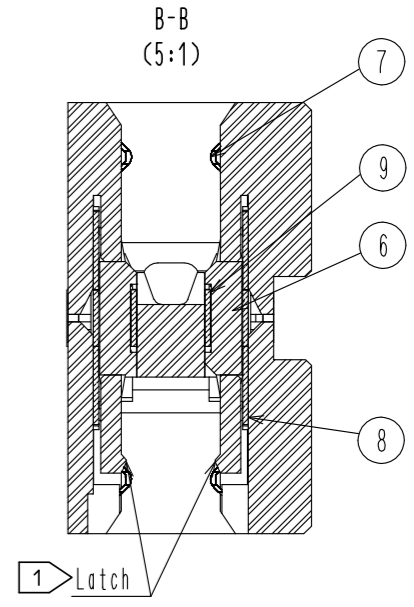
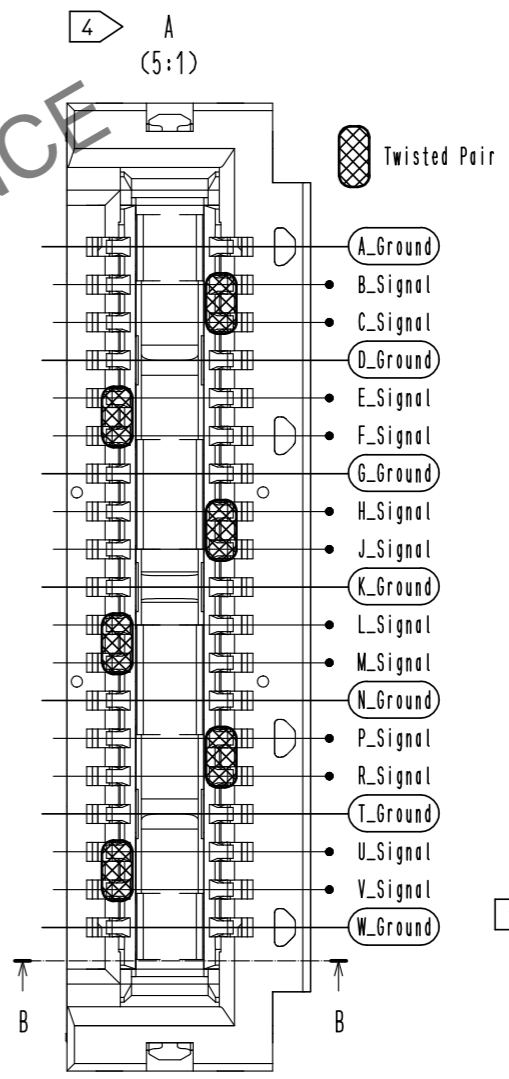
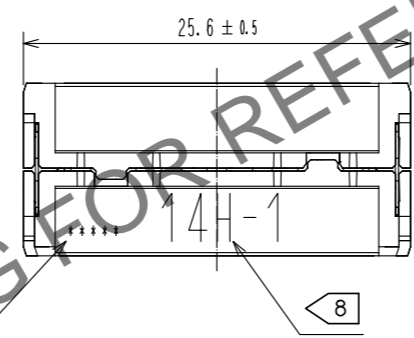
A  
B  
C  
D  
E  
F



A Row  
W

- Note.
- 1 Mounting side is mated with Plug-M:IT8M\*-192P-BGA-1H(\*\*) and fixed with the latch. IT8M\*-192P-BGA-0H(\*\*) cannot be mated.
  - 2 Mating side is mated with Plug-D:IT8D\*-192P-BGA-\*H(\*\*).
  - 3 Lot No. shall be marked at the indicated position.
  - 4 IT8 Series apply GSSG.. pin assign as shown. Twisted pairs are indicated by the hatch marks. Twisted pairs are twisted in the center to reduce FEXT.
  - 5 The indicated mother board and daughter card shall be fastened to the additional reinforcements to prevent the stress on IT8\*-192P-BGA-\*H(\*\*) solder joints.
  - 6 This product consists of 192 signal contacts and 112 ground contacts.
  - 7 The spacer height of this product assembled with mounted IT8M\*-192P-BGA-1H(\*\*) and IT8D\*-192P-BGA-\*H(\*\*) shall be indicated in Table 1.
  - 8 '14H-1' shall be marked at the indicated position.

Spacer height (X)	15	16
Plug-D (Detachable Side)	IT8D*-***P-BGA-0H(**)	IT8D*-***P-BGA-1H(**)
Interposer	IT8*-***S-14H-1(**)	
Plug-M (Mounting Side)	IT8M*-***P-BGA-1H(**)	IT8M*-***P-BGA-1H(**)



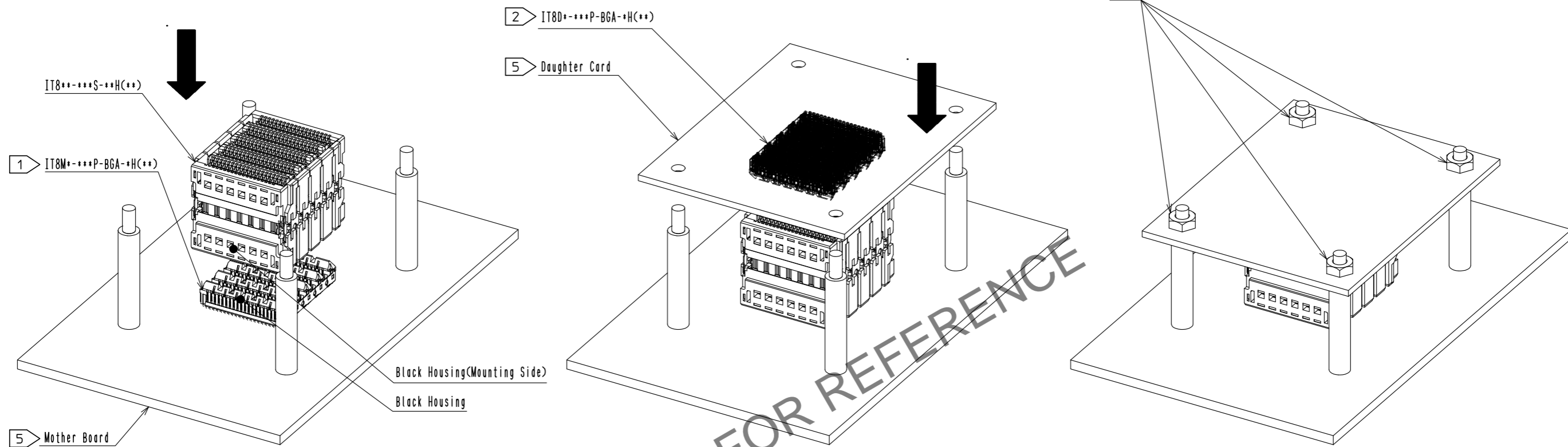
PRELIMINARY DRAWING

5	SUS		9	SUS	
4	PPS	BLACK, UL94V-0	8	SUS	
3	PPS	GRAY, UL94V-0	7	Copper Alloy	Contact area: Nickel 1.27 μm min. +Gold 0.76 μm min.
2	PPS	BLACK, UL94V-0			Other area: Nickel 1.27 μm min.
1	PPS	GRAY, UL94V-0	6	LCP	BLACK, UL94V-0
NO.	MATERIAL	FINISH . REMARKS	NO.	MATERIAL	FINISH . REMARKS
UNITS mm		SCALE 2 : 1	COUNT		DESCRIPTION OF REVISIONS
<b>HIROSE ELECTRIC CO., LTD.</b>		APPROVED : TM. MATSUO	20210301	DRAWING NO. EDC-393365-00-00	
		CHECKED : AS. MATSUZAWA	20210226	PART NO. IT8LN-192S-14H-1	
		DESIGNED : CHUNKAI YANG	20210226	CODE NO. CL0636-3724-0-00	
		DRAWN : CHUNKAI YANG	20210226	DATE	
		DESIGNED	CHECKED	DATE	

FORM HC0011-5-7 1 2 3 4 5 6 7 8

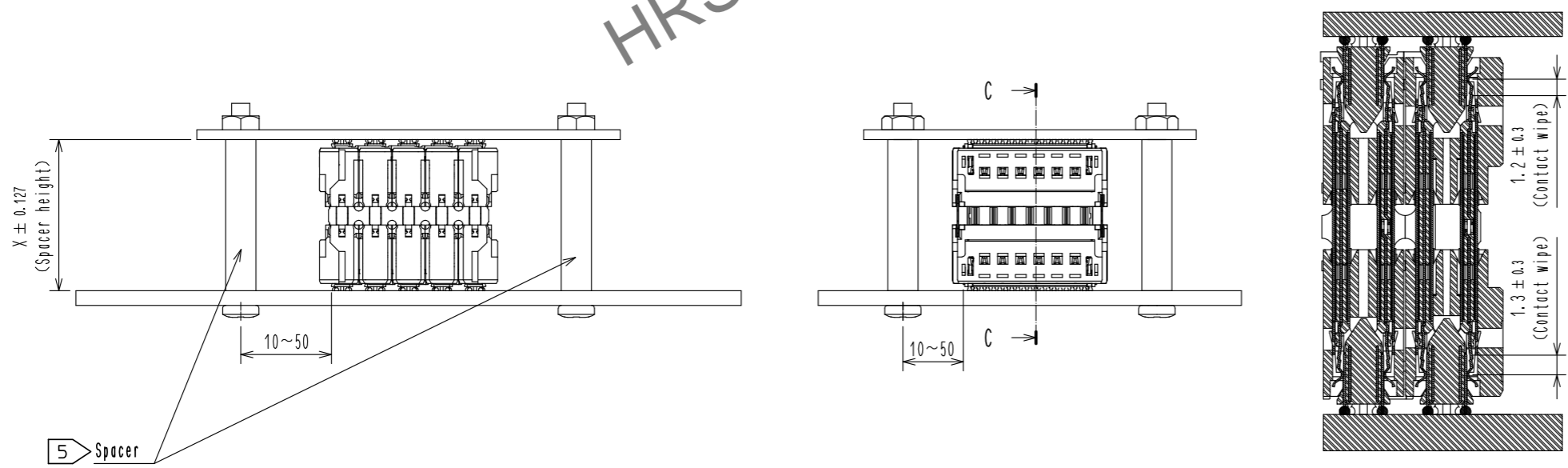
Mar.1.2025 Copyright 2025 HIROSE ELECTRIC CO., LTD. All Rights Reserved.  
 In case of consideration for using Automotive equipment / device which demand high reliability, kindly contact our sales window correspondents.

### IT8 Assembly Process



- 1) Insert mounting side of Interposer(IT8\*\*\*S\*\*H\*\*) by pressing on top of Interposer into reflowed Mounting Plug(IT8M\*\*\*P-BGA-H\*\*) having black housings.
- 2) Insert Detachable Plug(IT8D\*\*\*P-BGA-H\*\*) having gray housings into mating side of Interposer(IT8\*\*\*S\*\*H\*\*).
- 3) Install and tighten nuts to fix mated Detachable Plug after completion of mating.

### IT8 Mated Condition



PRELIMINARY DRAWING

<b>HRS</b>	DRAWING NO.	EDC-393365-00-00
	PART NO.	IT8LN-192S-14H-1
	CODE NO.	CL0636-3724-0-00
		2/2