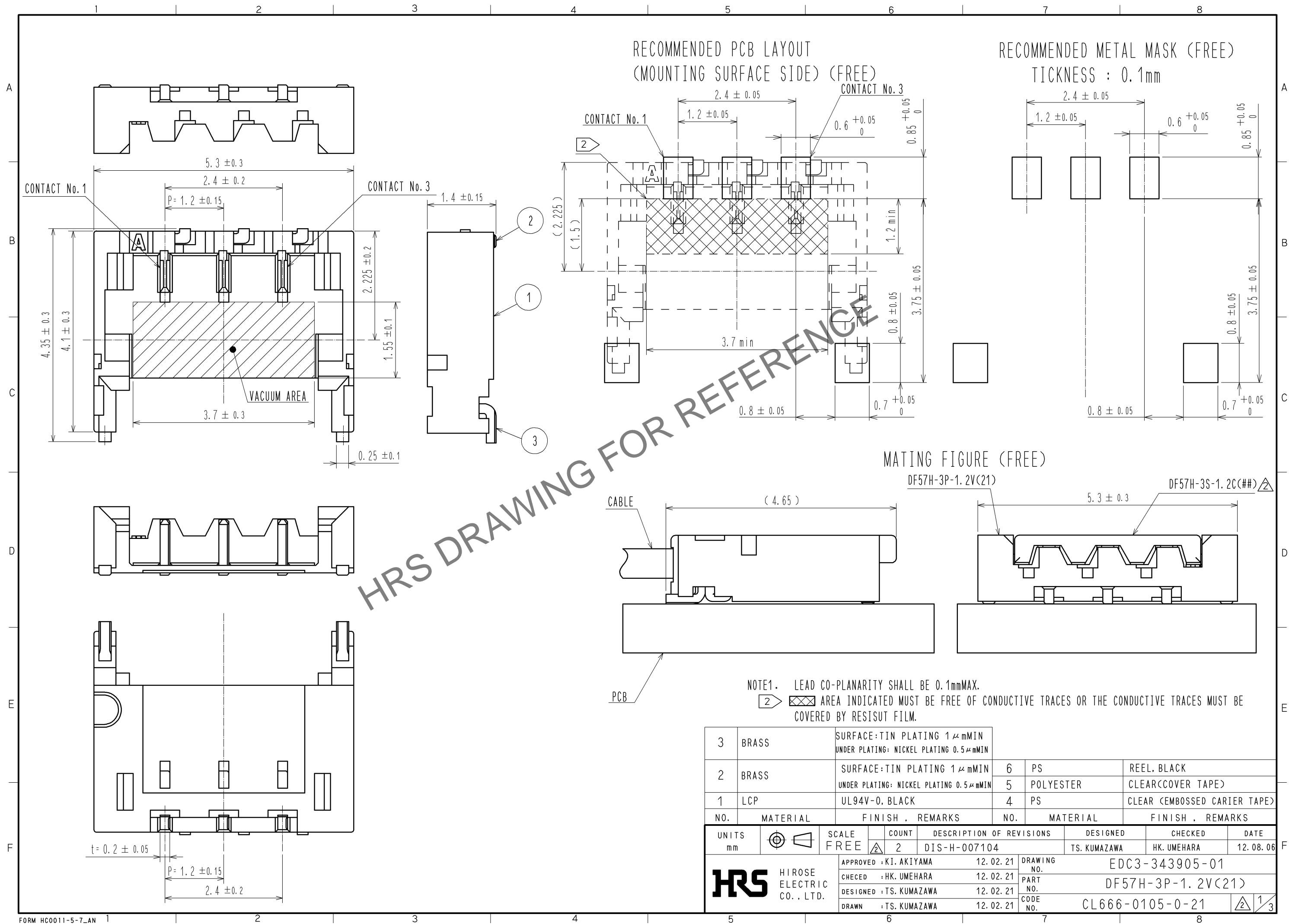
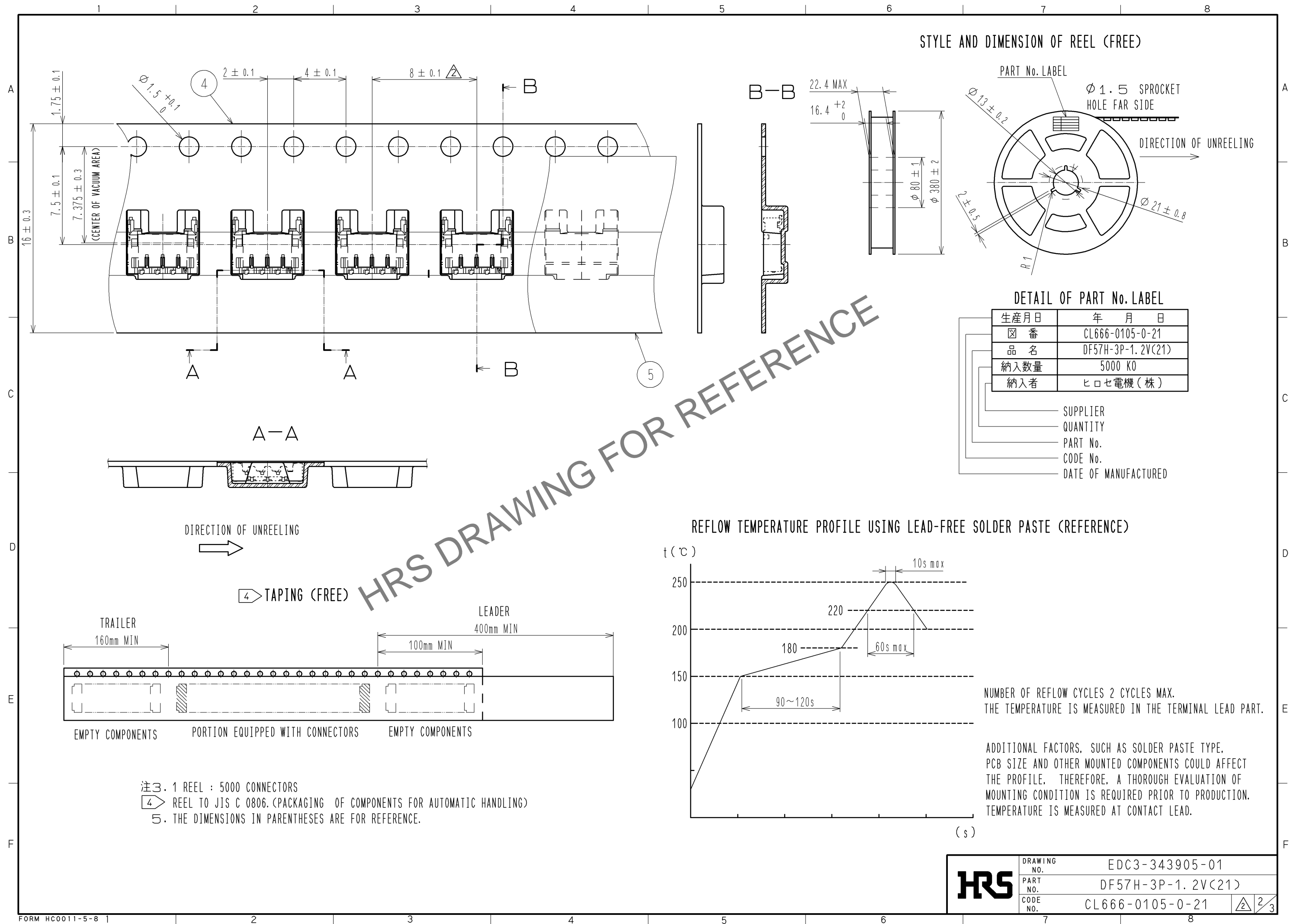


Apr.1.2024 Copyright 2024 HIROSE ELECTRIC CO., LTD. All Rights Reserved.  
In case of consideration for using Automotive equipment / device which demand high reliability, kindly contact our sales window correspondents.



Apr.1.2024 Copyright 2024 HIROSE ELECTRIC CO., LTD. All Rights Reserved.  
In case of consideration for using Automotive equipment / device which demand high reliability, kindly contact our sales window correspondents.

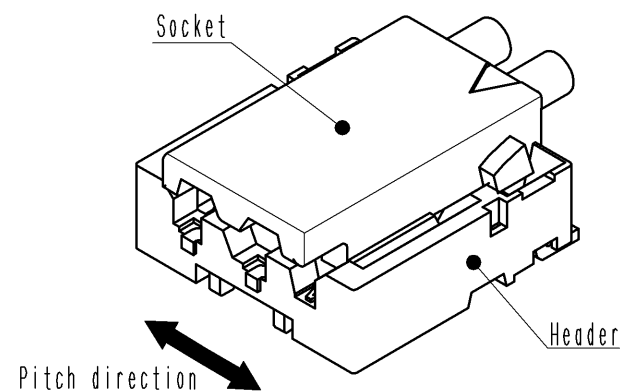


Apr.1.2024 Copyright 2024 HIROSE ELECTRIC CO., LTD. All Rights Reserved.  
In case of consideration for using Automotive equipment / device which demand high reliability, kindly contact our sales window correspondents.

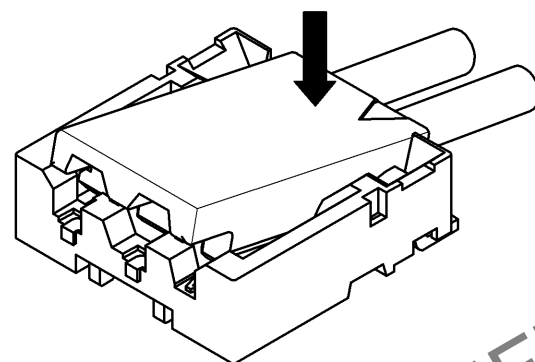
# DF57 Series Mating / Unmating Operation Instruction (For DF57 series)

## Mating

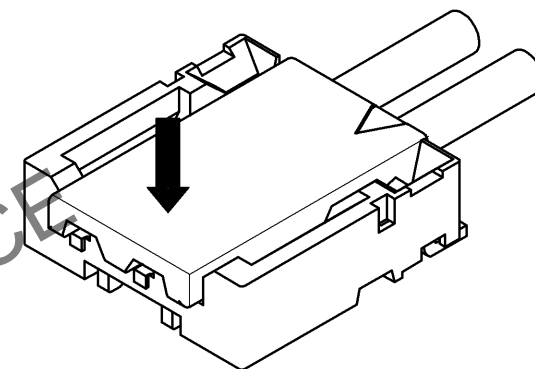
①By positioning the convexity of the socket sides to the header concavity, align the centers of the socket and the header in pitch direction.



②Slightly press the socket down at cable side to tilted angle.

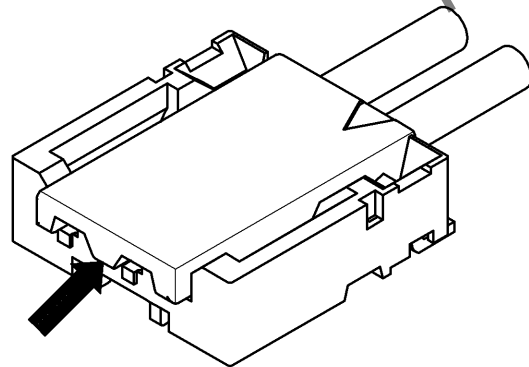


③Press down at the lever side with stabilizing the cable side to insert. Mating completes.

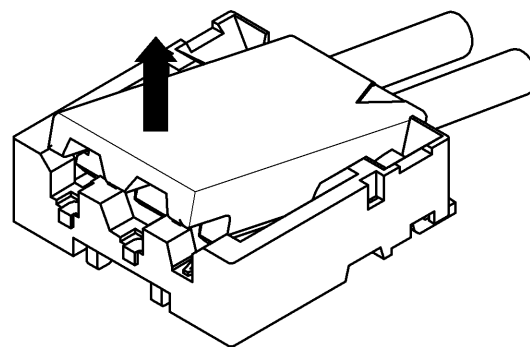


## Unmating

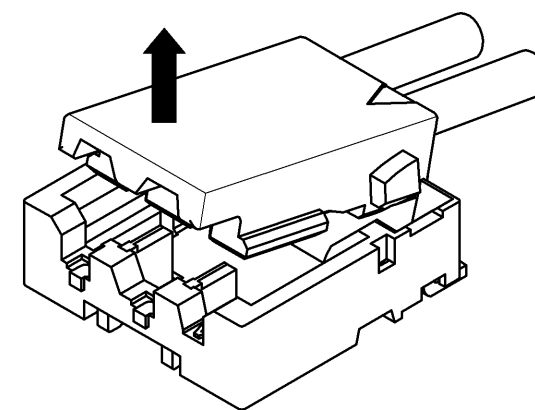
①Hook the lever with finger nail.



②Lift up to the upper direction and friction lock is released.



③Lift up to the upper direction and positive lock is released. Removal completes.



**HRS**

|             |                   |
|-------------|-------------------|
| DRAWING NO. | EDC3-343905-01    |
| PART NO.    | DF57H-3P-1.2V(21) |
| CODE NO.    | CL666-0105-0-21   |

3/3