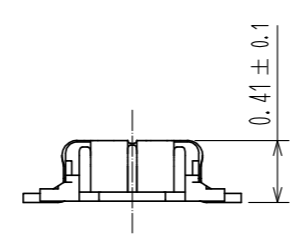
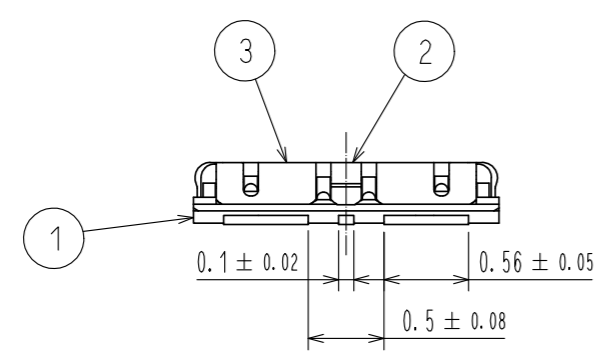
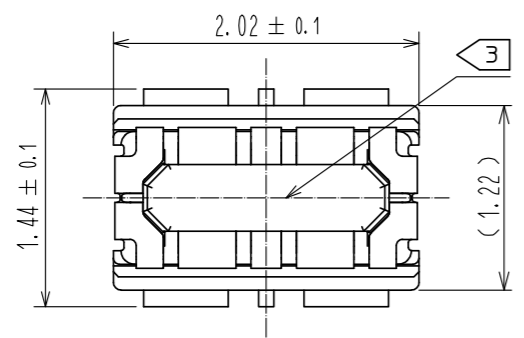
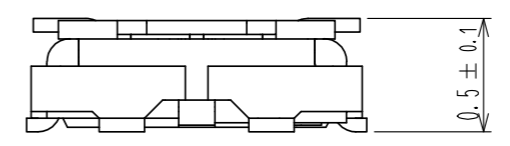


May.1.2023 Copyright 2023 HIROSE ELECTRIC CO., LTD. All Rights Reserved.
In case of consideration for using Automotive equipment / device which demand high reliability, kindly contact our sales window correspondents.



ENGAGEMENT FIGURE (30:1)



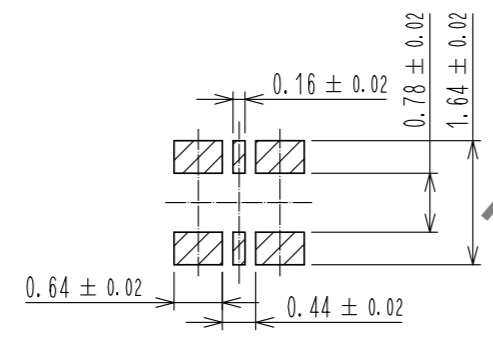
HRS DRAWING FOR REFERENCE

- NOTE 1 . All lead co-planarity shall be 0.08mm MAX.
- ② . Contact plating specifications
 Contact area : Gold 0.05 μm MIN
 SMT lead : Gold 0.05 μm MIN
 Under plating : Nickel 1 μm MIN
 (Surface : Sealing)
 - ③ . CAV No. IS INDICATED IN APPROX. POSITION SHOWN.

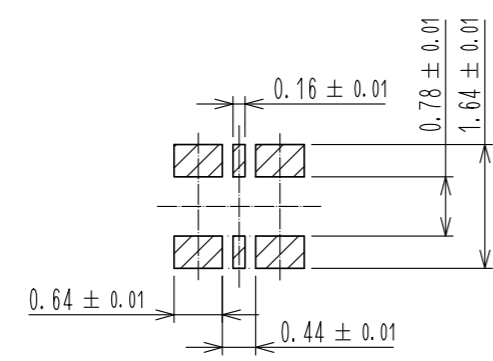
	3	COPPER ALLOY	②	7	PS	CLEAR. REINFORCEMENT COLLAR
	2	COPPER ALLOY	②	6	PS	BLACK. PLASTIC REEL
	1	LCP	UL94 V-0. BLACK	5	POLYESTER	CLEAR. COVER TAPE
				4	PS	SMOKE GRAY. EMBOSSED CARRIER TAPE
NO.	MATERIAL	FINISH . REMARKS		NO.	MATERIAL	FINISH . REMARKS
UNITS mm		SCALE 20 : 1	COUNT 	DESCRIPTION OF REVISIONS		DESIGNED
						CHECKED
						DATE
HIROSE ELECTRIC CO., LTD.				APPROVED	·WR. FUKUCHI	20220614
				CHECKED	·TY. 00I	20220613
				DESIGNED	·SH. HOSODA	20220613
				DRAWN	·SH. HOSODA	20220613
				DRAWING NO.	EDC-394052-51-00	
				PART NO.	BM55R0. 5-2DP/2-0. 3V<51>	
				CODE NO.	CL0673-7801-0-51	
						1/3

May.1.2023 Copyright 2023 HIROSE ELECTRIC CO., LTD. All Rights Reserved.
In case of consideration for using Automotive equipment / device which demand high reliability, kindly contact our sales window correspondents.

RECOMMENDED PCB LAYOUT (10 : 1)

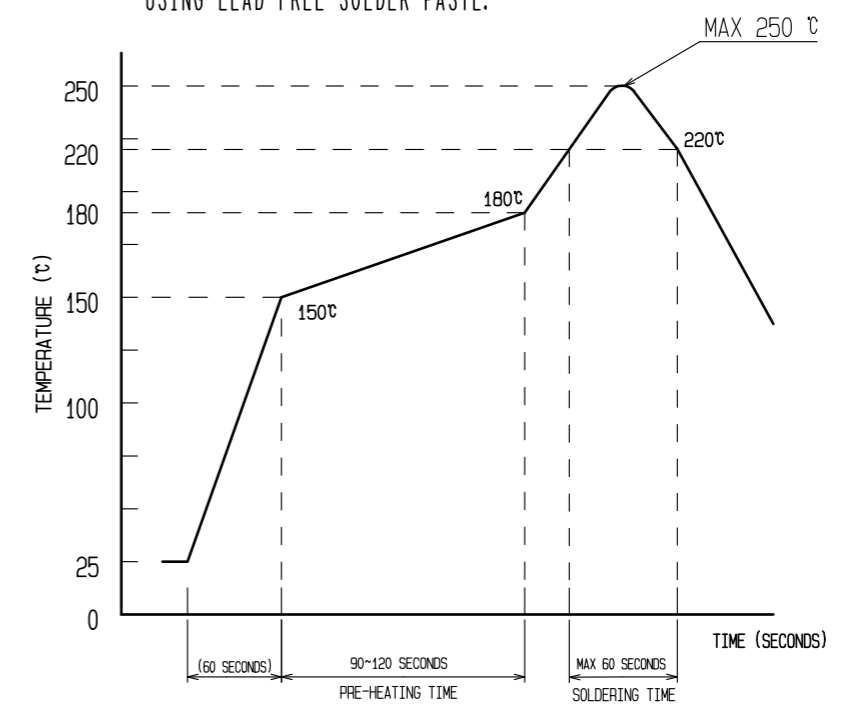


RECOMMENDED METALMASK LAYOUT (10 : 1)
METALMASK THICKNESS : 80 μm



HRS DRAWING FOR REFERENCE

4 RECOMMENDED REFLOW TEMPERATURE PROFILE USING LEAD-FREE SOLDER PASTE.



REFLOW METHOD: IR REFLOW
 NUMBER OF REFLOW CYCLES: 2 CYCLES MAX.
 1) REFLOW TIME
 DURATION ABOVE 220°C: 60 SEC MAX.
 (PEAK TEMPERATURE: 250°C MAX)
 2) PRE-HEAT TIME
 PRE-HEAT TEMPERATURE (MIN): 150°C
 PRE-HEAT TEMPERATURE (MAX): 180°C
 PRE-HEAT TIME: 90-120 SEC.

- 4 THIS TEMPERATURE PROFILE IS PER THE CONDITIONS SHOWN ABOVE. ADDITIONAL FACTORS, SUCH AS SOLDER PASTE TYPE, PCB SIZE AND OTHER MOUNTED COMPONENTS COULD AFFECT THE PROFILE. THEREFORE, A THOROUGH EVALUATION OF MOUNTING CONDITION IS REQUIRED PRIOR TO PRODUCTION. TEMPERATURE IS MEASURED AT CONTACT LEAD.
- PLEASE CONTACT US IN CASE YOU WILL MAKE DIFFERENT SETTINGS FROM OUR RECOMMENDATION.
 - THIS PRODUCT SATISFIES HALOGEN FREE REQUIREMENTS DEFINED AS 900ppm MAXIMUM CHLORINE, 900ppm MAXIMUM BROMINE, AND 1500ppm MAXIMUM TOTAL OF CHLORINE AND BROMINE.
 - THIS PRODUCT COMPLY WITH RoHS.

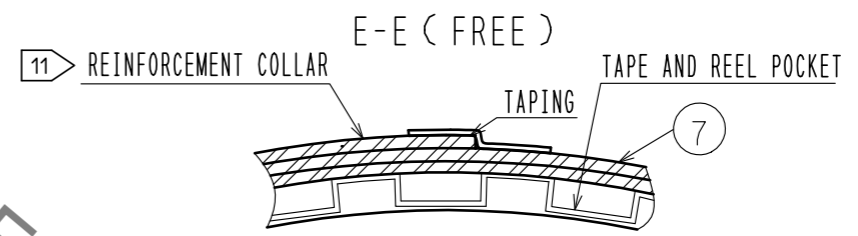
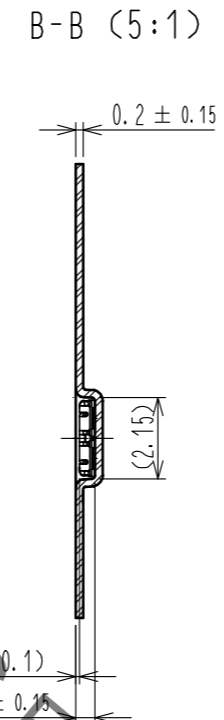
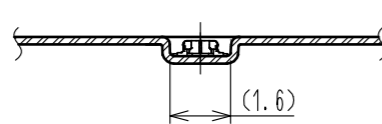
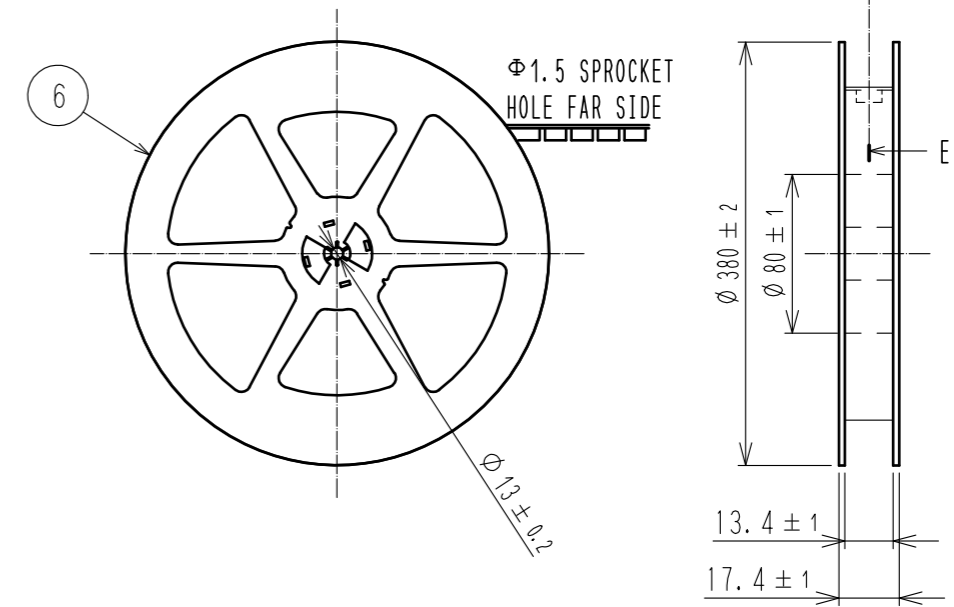
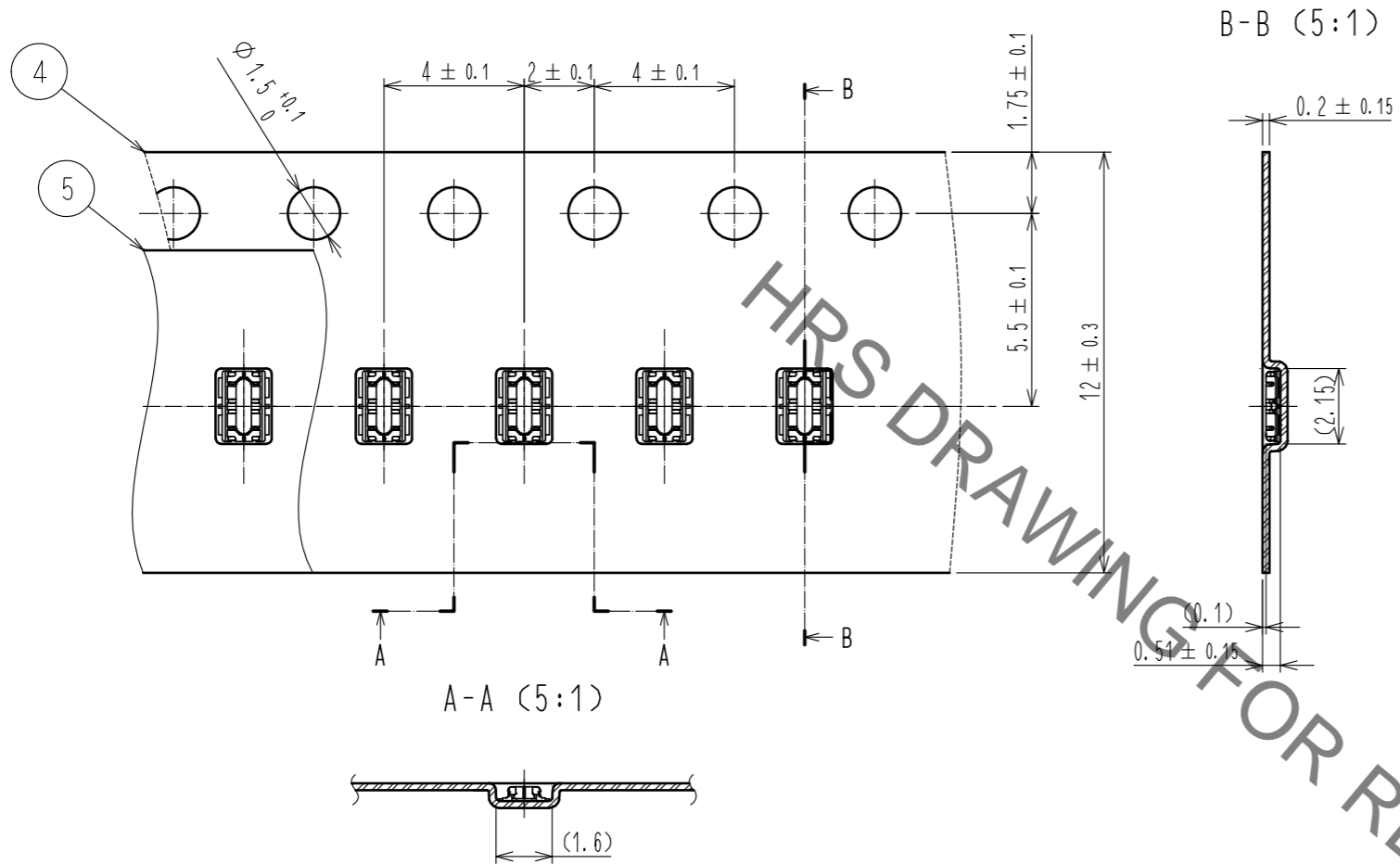
HRS	DRAWING NO.	EDC-394052-51-00
	PART NO.	BM55R0. 5-2DP/2-0. 3V(51)
	CODE NO.	CL0673-7801-0-51

2/3

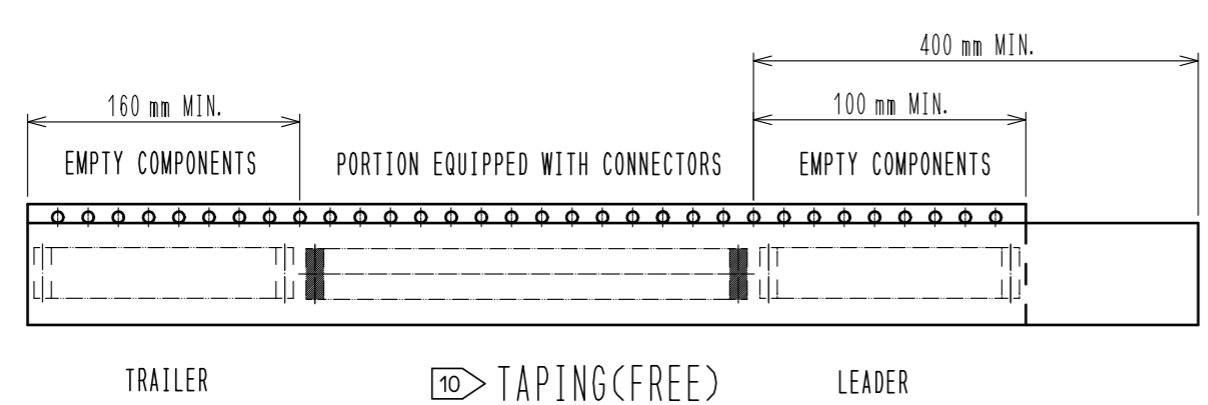
May.1.2023 Copyright 2023 HIROSE ELECTRIC CO., LTD. All Rights Reserved.
In case of consideration for using Automotive equipment / device which demand high reliability, kindly contact our sales window correspondents.

EMBOSED CARRIER TAPE PACKAGING (5:1)

STYLE AND DIMENSION OF REEL (FREE)



DIRECTION OF UNREELING
→



- 8 . PER REEL 30,000 CONNECTORS.
- 9 . THE DIMENSIONS IN PARENTHESES ARE FOR REFERENCE.
- 10 REFER TO IEC 60286-3 (PACKAGING OF COMPONENTS FOR AUTOMATIC HANDLING)
- 11 AFTER PACKAGING, ROLL 2 METERS OF THE REINFORCEMENT COLLAR TO OUTER CIRCUMFERENCE OF TAPE AND REEL POCKET, AND TAPE DOWN AT THE END THE COLLAR.

HRS	DRAWING NO.	EDC-394052-51-00
	PART NO.	BM55R0.5-2DP/2-0.3V(51)
	CODE NO.	CL0673-7801-0-51
		\triangle 3/3