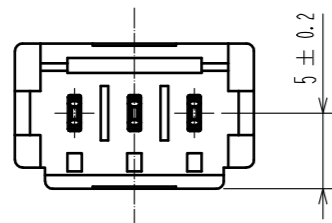
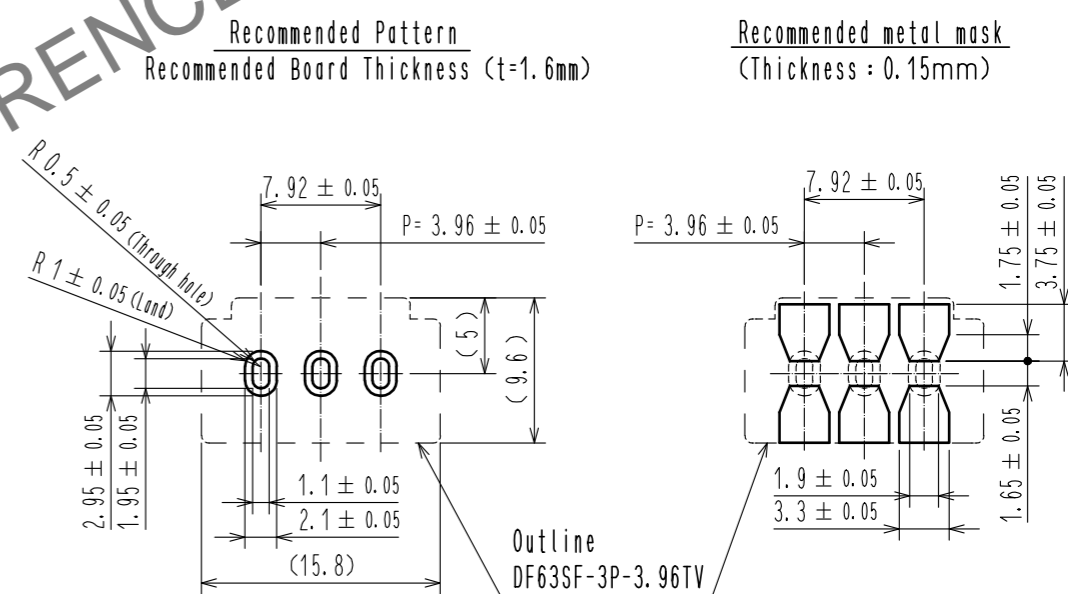
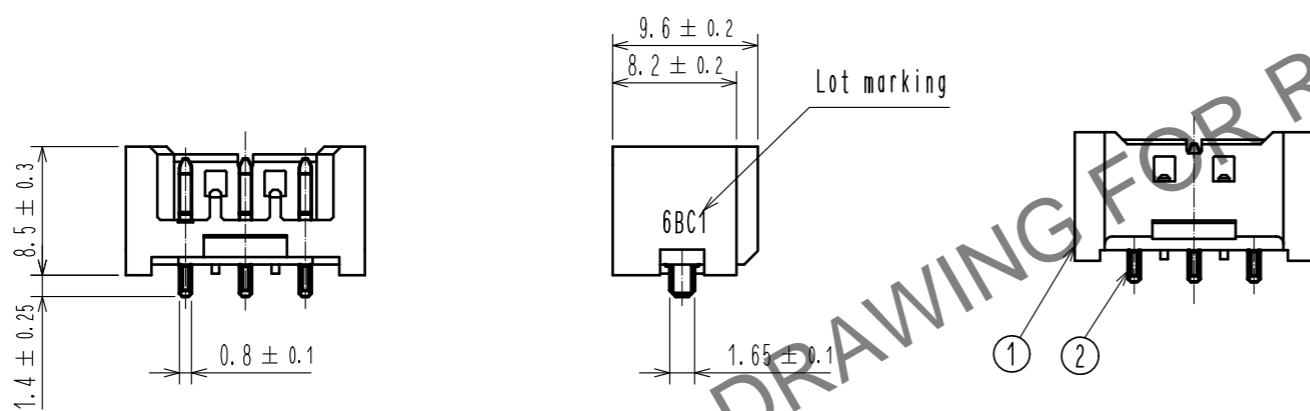
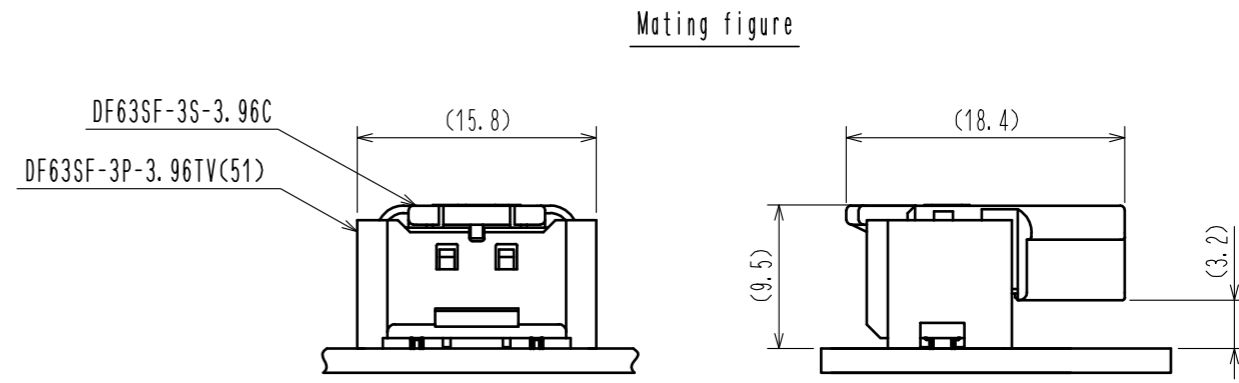
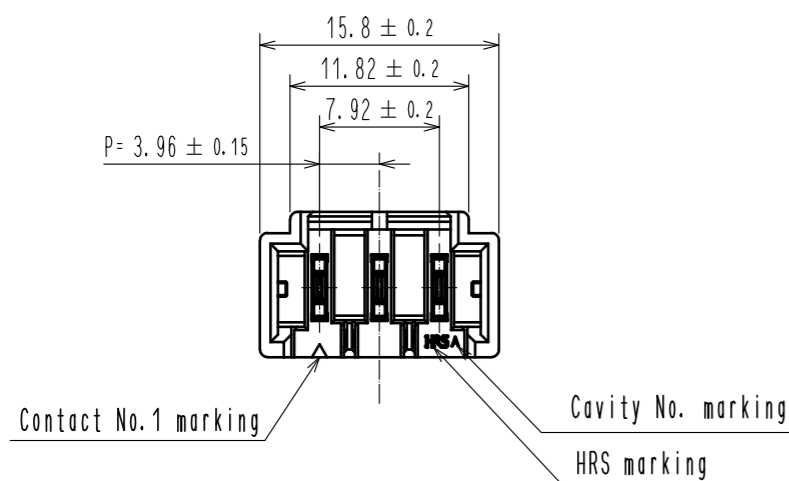


Oct.1.2024 Copyright 2024 HIROSE ELECTRIC CO., LTD. All Rights Reserved.
 In case of consideration for using Automotive equipment / device which demand high reliability, kindly contact our sales window correspondents.



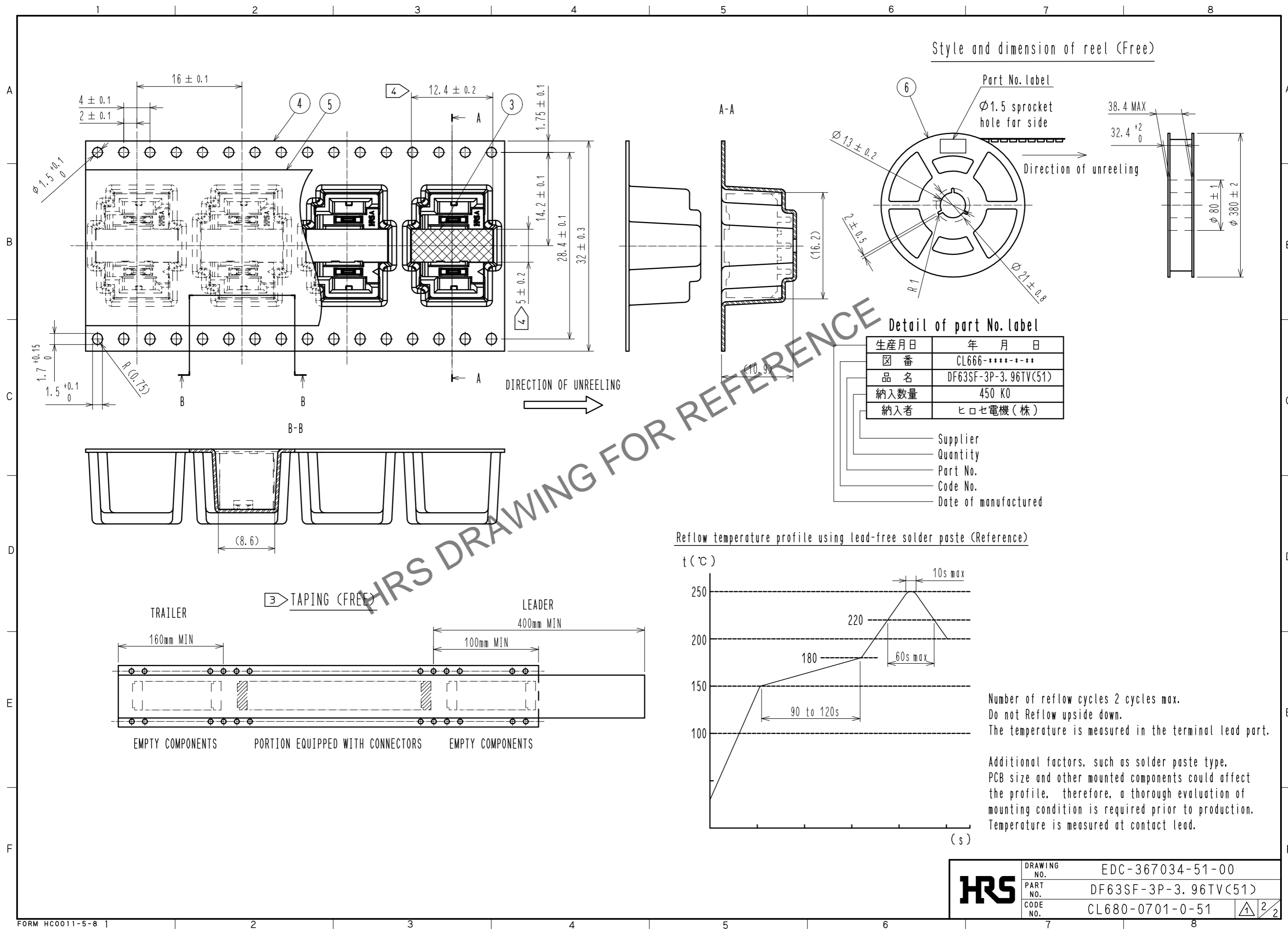
HRS DRAWING FOR REFERENCE

- Note 1. 1 reel : 450 connectors
 2. The dimensions in parentheses are for reference.
 3 Reel to JIS C 0806.(Packaging of components for automatic handling)
 4 The dimensions are Vacuum area
 5. UL(File No. E52653)
 C-UL(File No. E52653)
 TÜV (Certificate No. R50372836)
 authorization article.

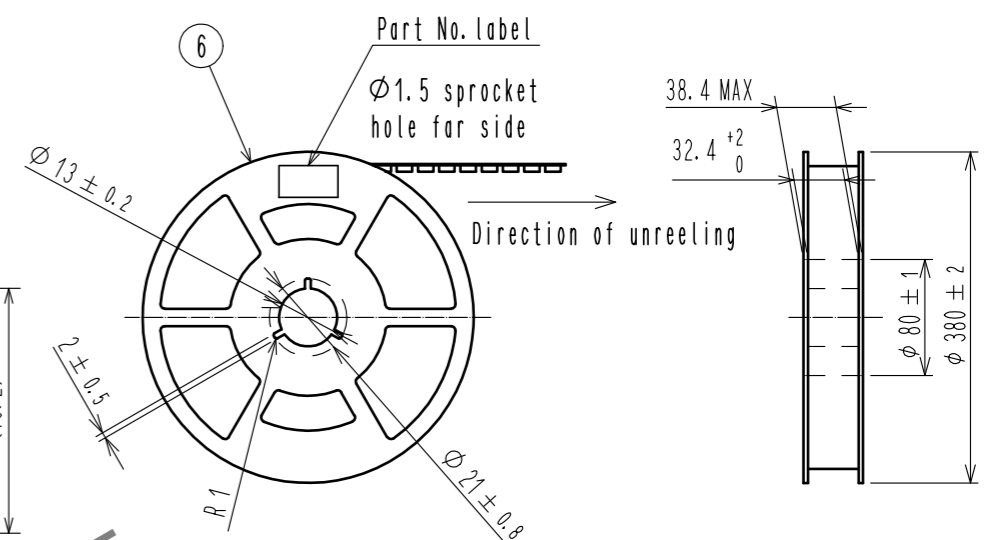


3	PA	UL94V-0(BLACK)	6	PS	Reel . Black		
2	Copper alloy	Contact area : Gold plating 0.2 μm MIN	5	Polyester	Clear [Cover tape]		
		Contact end : Gold plating 0.05 μm MIN	4	PS	Clear [Embossed carrier tape]		
		Lead area : Gold plating 0.05 μm MIN Under plating : Nickel plating 1.27 μm MIN					
1	LCP	UL94V-0(BLACK)					
NO.	MATERIAL	FINISH . REMARKS	NO.	MATERIAL	FINISH . REMARKS		
UNITS mm		SCALE 2 : 1	COUNT 1	DESCRIPTION OF REVISIONS DIS-H-00006075	DESIGNED TS.MIYAKI	CHECKED SZ.ONO	DATE 20200710
HRS HIROSE ELECTRIC CO., LTD.		APPROVED : HS. OKAWA 20191112	DRAWING NO. EDC-367034-51-00				
		CHECKED : SZ. ONO 20191112	PART NO. DF63SF-3P-3.96TV(51)				
		DESIGNED : TO. KUROMATSU 20191112	CODE NO. CL680-0701-0-51				
		DRAWN : SK. CHIBA 20191112					

Oct.1.2024 Copyright 2024 HIROSE ELECTRIC CO., LTD. All Rights Reserved.
 In case of consideration for using Automotive equipment / device which demand high reliability, kindly contact our sales window correspondents.



Style and dimension of reel (Free)

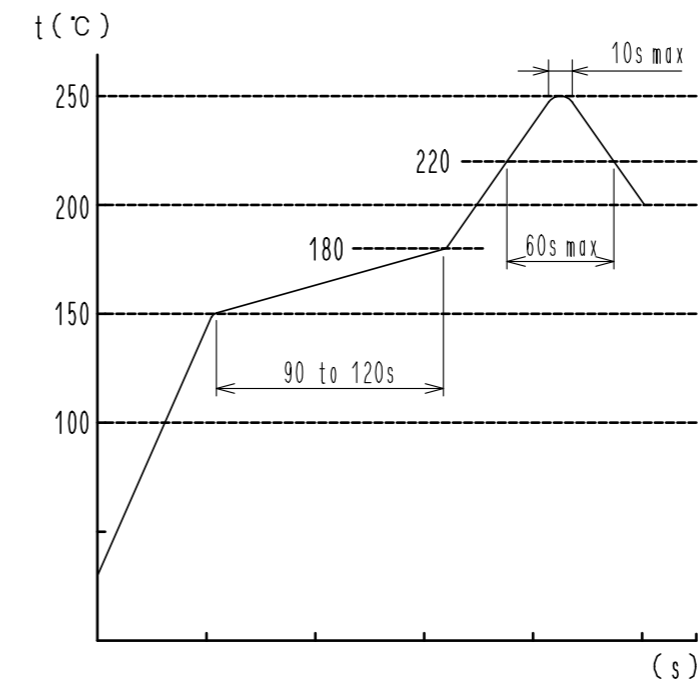


Detail of part No. label

生産月日	年 月 日
図 番	CL666-****-***
品 名	DF63SF-3P-3.96TV(51)
納入数量	450 KO
納入者	ヒロセ電機(株)

- Supplier
- Quantity
- Part No.
- Code No.
- Date of manufactured

Reflow temperature profile using lead-free solder paste (Reference)



Number of reflow cycles 2 cycles max.
 Do not Reflow upside down.
 The temperature is measured in the terminal lead part.

Additional factors, such as solder paste type, PCB size and other mounted components could affect the profile, therefore, a thorough evaluation of mounting condition is required prior to production. Temperature is measured at contact lead.

HRS	DRAWING NO.	EDC-367034-51-00
	PART NO.	DF63SF-3P-3.96TV(51)
	CODE NO.	CL680-0701-0-51
		2/2