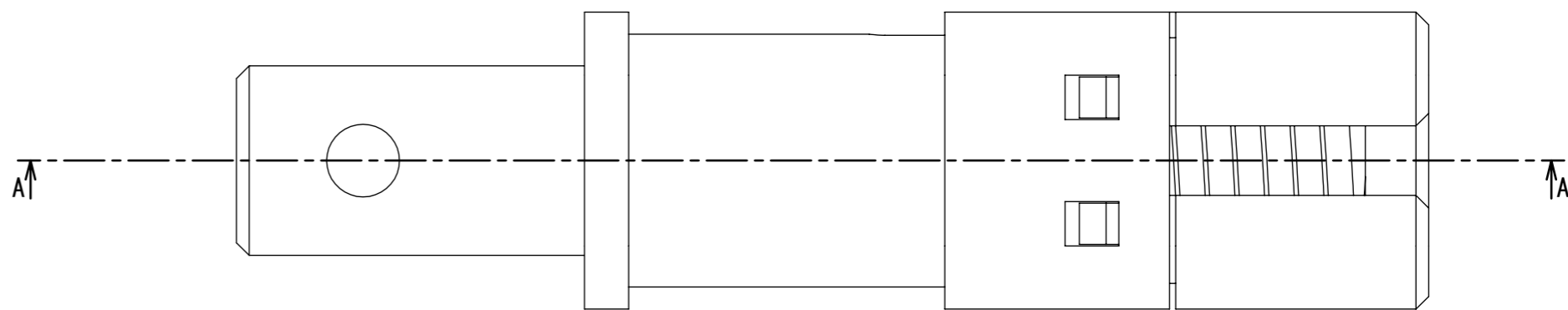
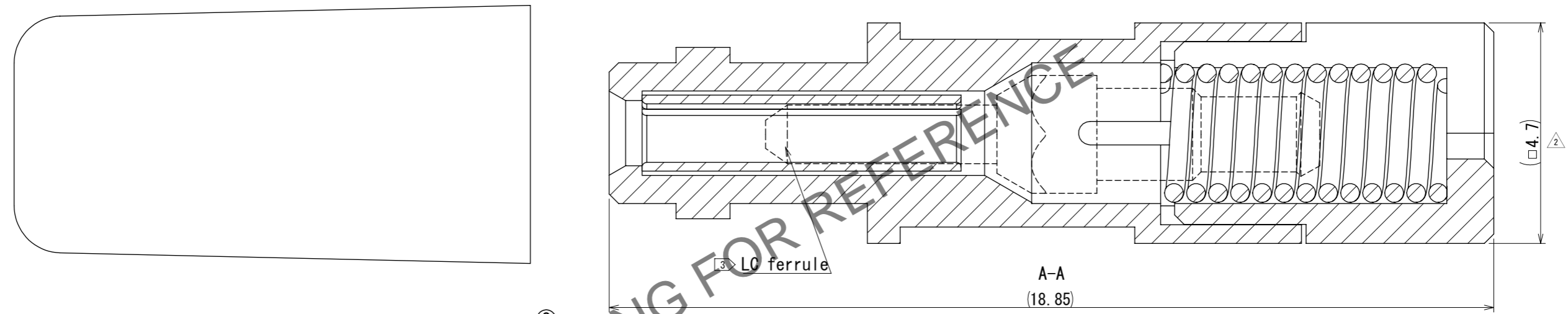


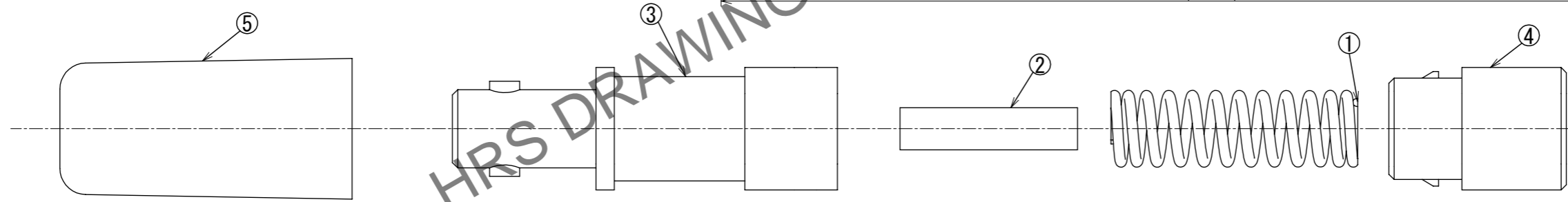
Oct.1.2024 Copyright 2024 HIROSE ELECTRIC CO., LTD. All Rights Reserved.
 In case of consideration for using Automotive equipment / device which demand high reliability, kindly contact our sales window correspondents.



△ Front View



A-A
(18.85)



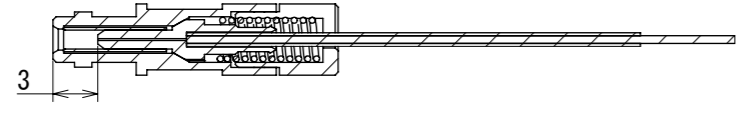
△ Parts Configuration Diagram
SCALE 5:1

Table1. Parts list

| No. | Parts name | Details | NOTE |
|-----|----------------|---------|-------------|
| ① | LC Spring | SUS304 | - |
| ② | Split sleeve | ZrO2 | - |
| ③ | LC Coupling P1 | PESU | - |
| ④ | LC Coupling P2 | PESU | - |
| ⑤ | Cap | TPS | Color:Black |

- 注 ① Table1 shows the parts list.
 2. No. ③ LC Coupling P1, ④ LC Coupling P2 may contain air bubbles in the resin and may vary in color, but this does not affect performance.
 ③ LC ferrules are not included in this product. Please purchase commercially available LC ferrules.
 4. Sales Unit : 200pcs
 △ 5. Front and A-A cross section show image view when assembled with LC ferrule.
 △ ⑥ This figure shows the difference in harness dimensions before and after assembly of this product.

△ ⑥ Dimension between LC Coupling P1 Edge and LC Ferrule End-Face



| | | | | | | | |
|---------------------------------------|---------------|------------|--------------------------|--|------------------|------------|--------------|
| UNITS mm | SCALE 10:1 | COUNT 6 | DESCRIPTION OF REVISIONS | | DESIGNED | CHECKED | DATE |
| | | | DIS-K-00010334 | | SI. MATSUMOTO | SJ. SUZUKI | 2024. 03. 01 |
| APPROVED : YY. HIYAMA 2023. 09. 15 | | | DRAWING NO. | | EDC-401255-00-00 | | |
| CHECKED : TS. YAMAZAKI 2023. 09. 15 | | | PART NO. | | FJ-L-P-KT1 | | |
| DESIGNED : SI. MATSUMOTO 2023. 09. 15 | | | CODE NO. | | CL0719-1100-0-00 | | |
| DRAWN : SK. AOYAMA 2023. 09. 15 | | | | | | | |

