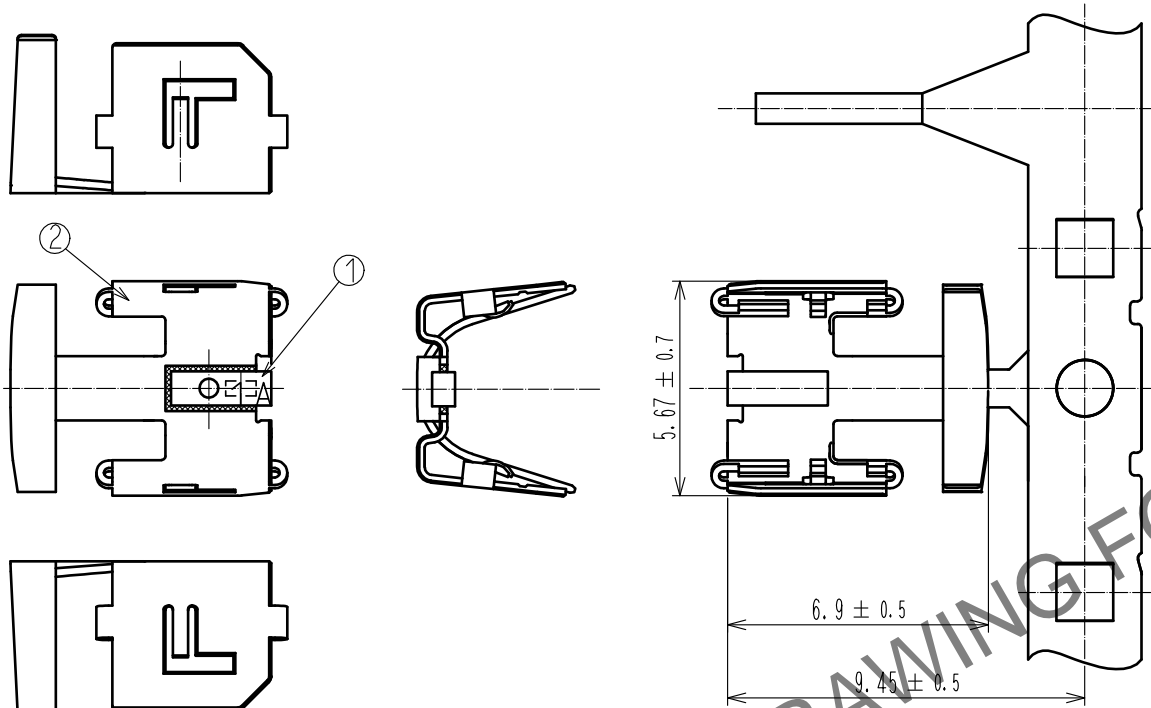


May.1.2024 Copyright 2024 HIROSE ELECTRIC CO., LTD. All Rights Reserved.  
In case of consideration for using Automotive equipment / device which demand high reliability, kindly contact our sales window correspondents.

ELV. RoHS COMPLIANT

① Change magnification



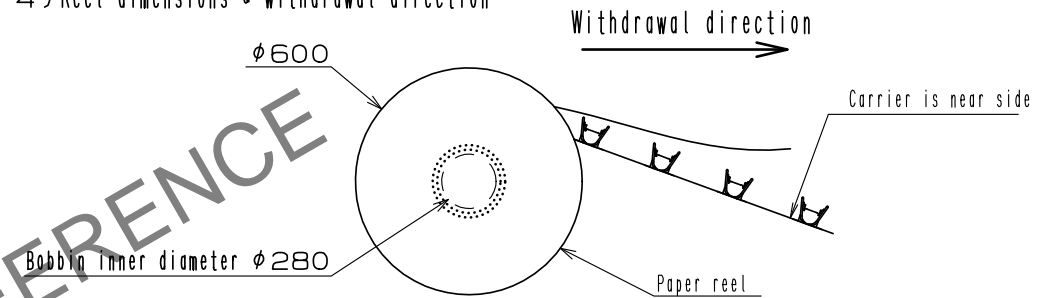
④ Packing specifications

- 1) How to connect carriers when reeling up  
Max 6 joints per reel. Connect the carriers with interlayer paper.  
At the beginning of winding, fix the interlayer paper and carrier, and the reel core and paper with tape respectively.

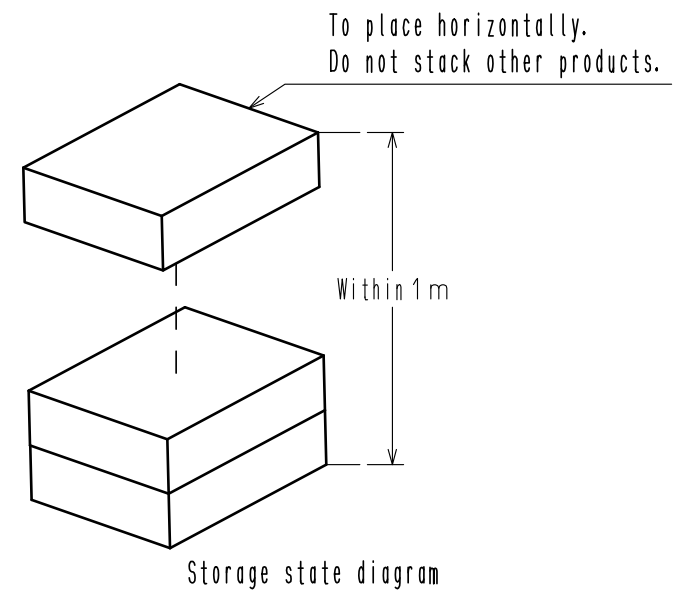
② Number of terminals  
2450 terminals per reel.

- 3) Shortage  
Max 20 missing terminals per reel.  
Max 4 missing terminals per shortage. Min 6 terminals or more per carrier.

4) Reel dimensions & withdrawal direction



- ⑤ Packing quantity  
2 reels per cardboard. (4900 terminals per cardboard.)
- ⑥ Storage state diagram



1	LCP	BLACK	2	COPPER ALLOY	TIN PLATING
NO.	MATERIAL	FINISH . REMARKS	NO.	MATERIAL	FINISH . REMARKS
UNITS mm		SCALE 5 : 1	COUNT ④ 2	DESCRIPTION OF REVISIONS DIS-T-00007534	DESIGNED KN. MIKAMI
HIROSE ELECTRIC CO., LTD.		APPROVED : KI. HIROKAWA	20180307	DRAWING NO. EDC-374070-00-00	DATE 20201225
		CHECKED : KI. HIROKAWA	20180307	PART NO. GT43-1P/S-CSB	
		DESIGNED : KT. OKABE	20180307	CODE NO. CL0753-1005-0-00	
		DRAWN : GYEONGMIN LEE	20180307		