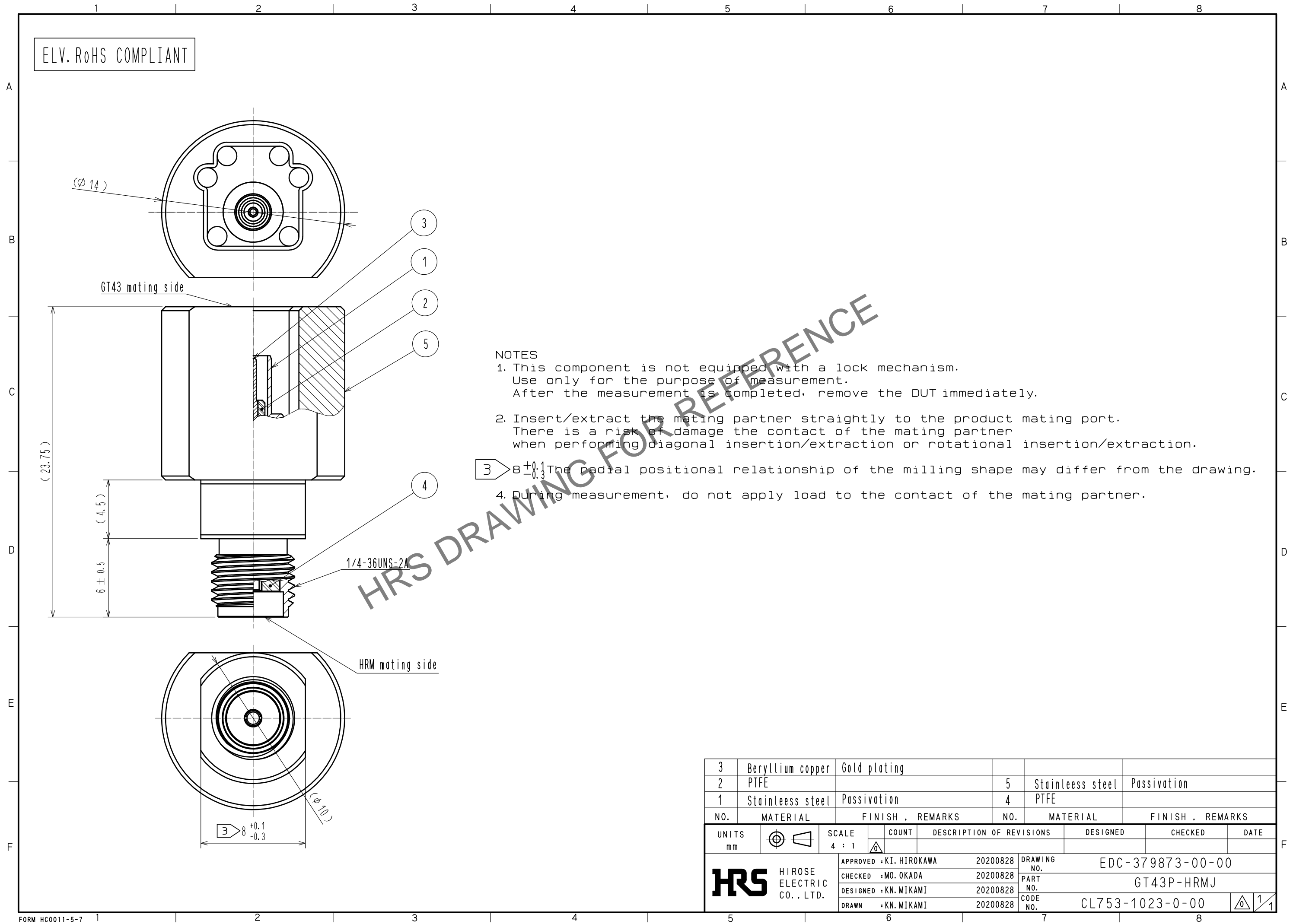


May.1.2024 Copyright 2024 HIROSE ELECTRIC CO., LTD. All Rights Reserved.
In case of consideration for using Automotive equipment / device which demand high reliability, kindly contact our sales window correspondents.



NOTES

1. This component is not equipped with a lock mechanism.
Use only for the purpose of measurement.
After the measurement is completed, remove the DUT immediately.

2. Insert/extract the mating partner straightly to the product mating port.
There is a risk of damage the contact of the mating partner
when performing diagonal insertion/extraction or rotational insertion/extraction.

3. $8^{+0.1}_{-0.3}$ The radial positional relationship of the milling shape may differ from the drawing.

4. During measurement, do not apply load to the contact of the mating partner.

3	Beryllium copper	Gold plating			
2	PTFE		5	Stainless steel	Passivation
1	Stainless steel	Passivation	4	PTFE	
NO.	MATERIAL	FINISH . REMARKS	NO.	MATERIAL	FINISH . REMARKS
UNITS mm		SCALE 4 : 1	COUNT 	DESCRIPTION OF REVISIONS	DESIGNED CHECKED DATE
HIROSE ELECTRIC CO., LTD.		APPROVED : KI. HIROKAWA	20200828	DRAWING NO.	EDC-379873-00-00
		CHECKED : MO. OKADA	20200828	PART NO.	GT43P-HRMJ
		DESIGNED : KN. MIKAMI	20200828	CODE NO.	CL753-1023-0-00
		DRAWN : KN. MIKAMI	20200828		