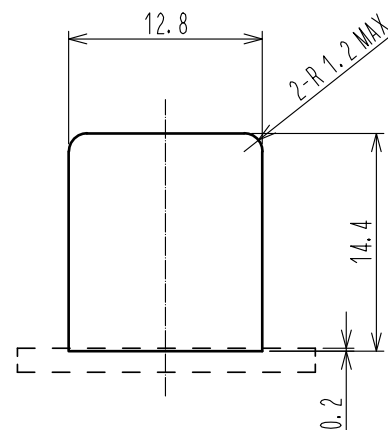
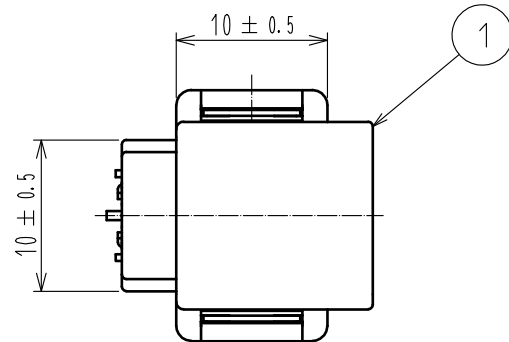
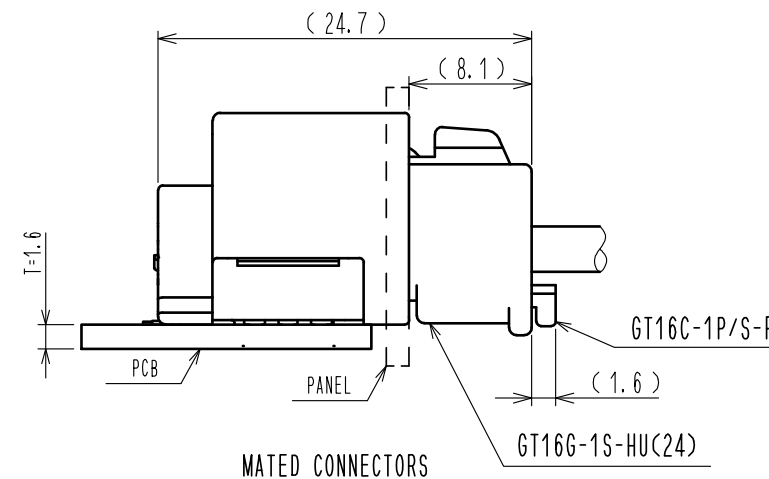


May.1.2024 Copyright 2024 HIROSE ELECTRIC CO., LTD. All Rights Reserved.  
In case of consideration for using Automotive equipment / device which demand high reliability, kindly contact our sales window correspondents.

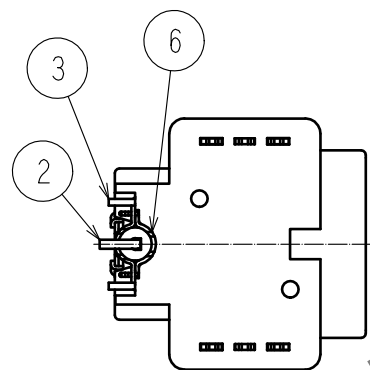
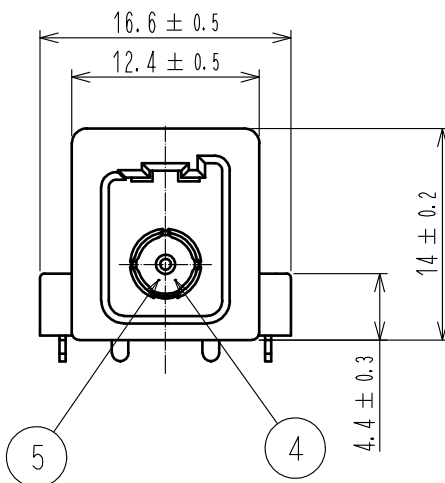
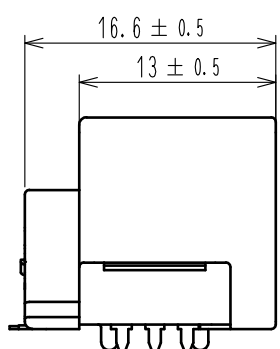
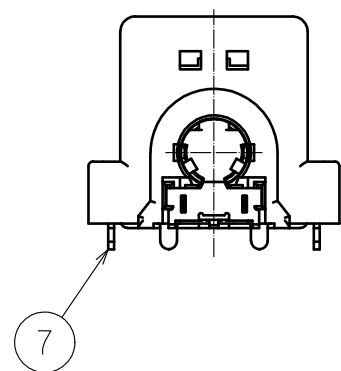
ELV. RoHS COMPLIANT



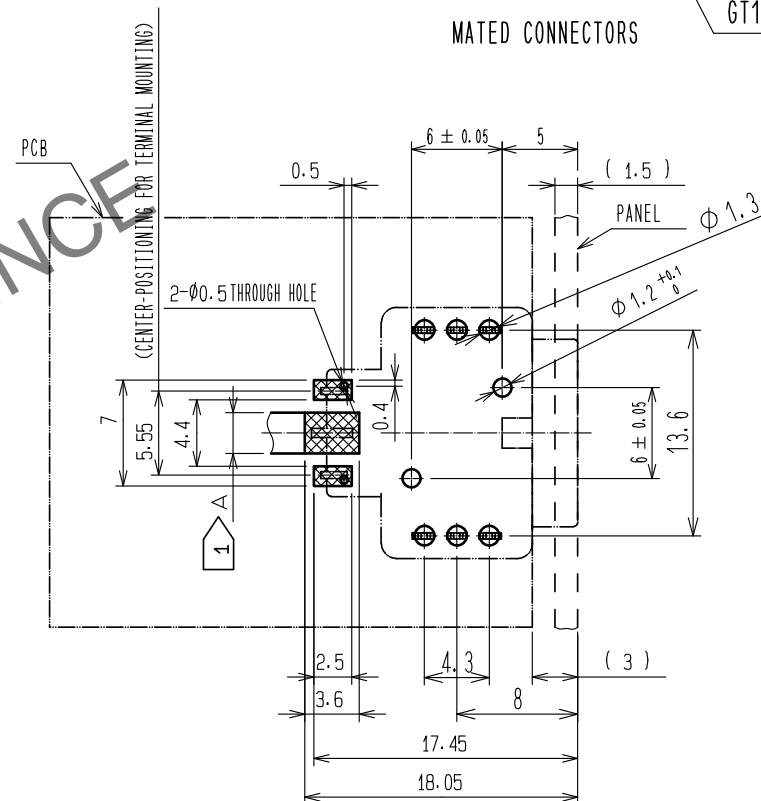
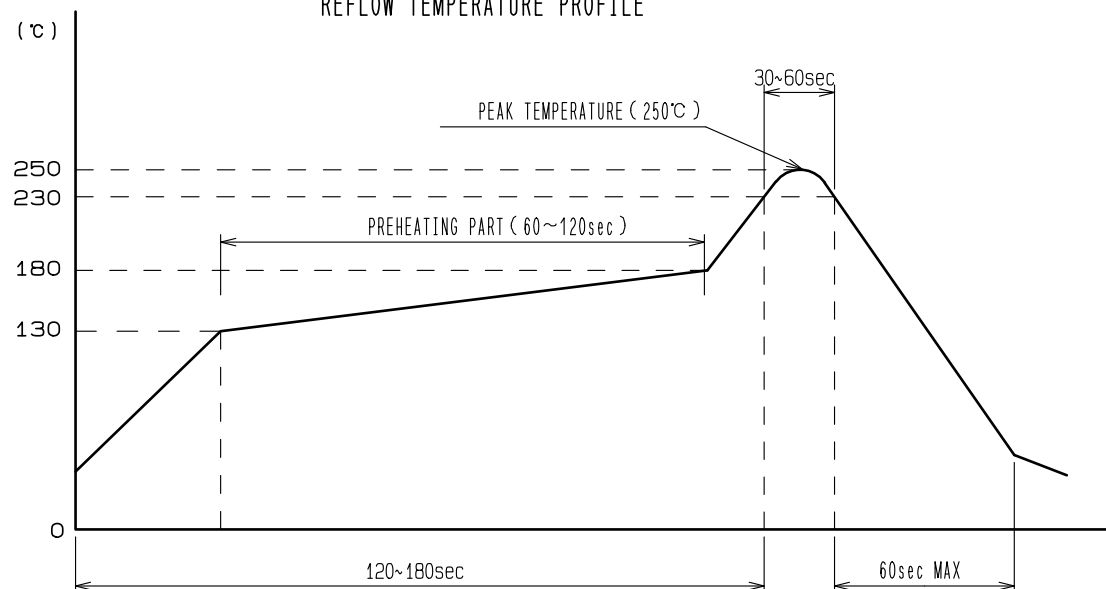
RECOMMENDED PANEL CUTOUT



MATED CONNECTORS



REFLOW TEMPERATURE PROFILE



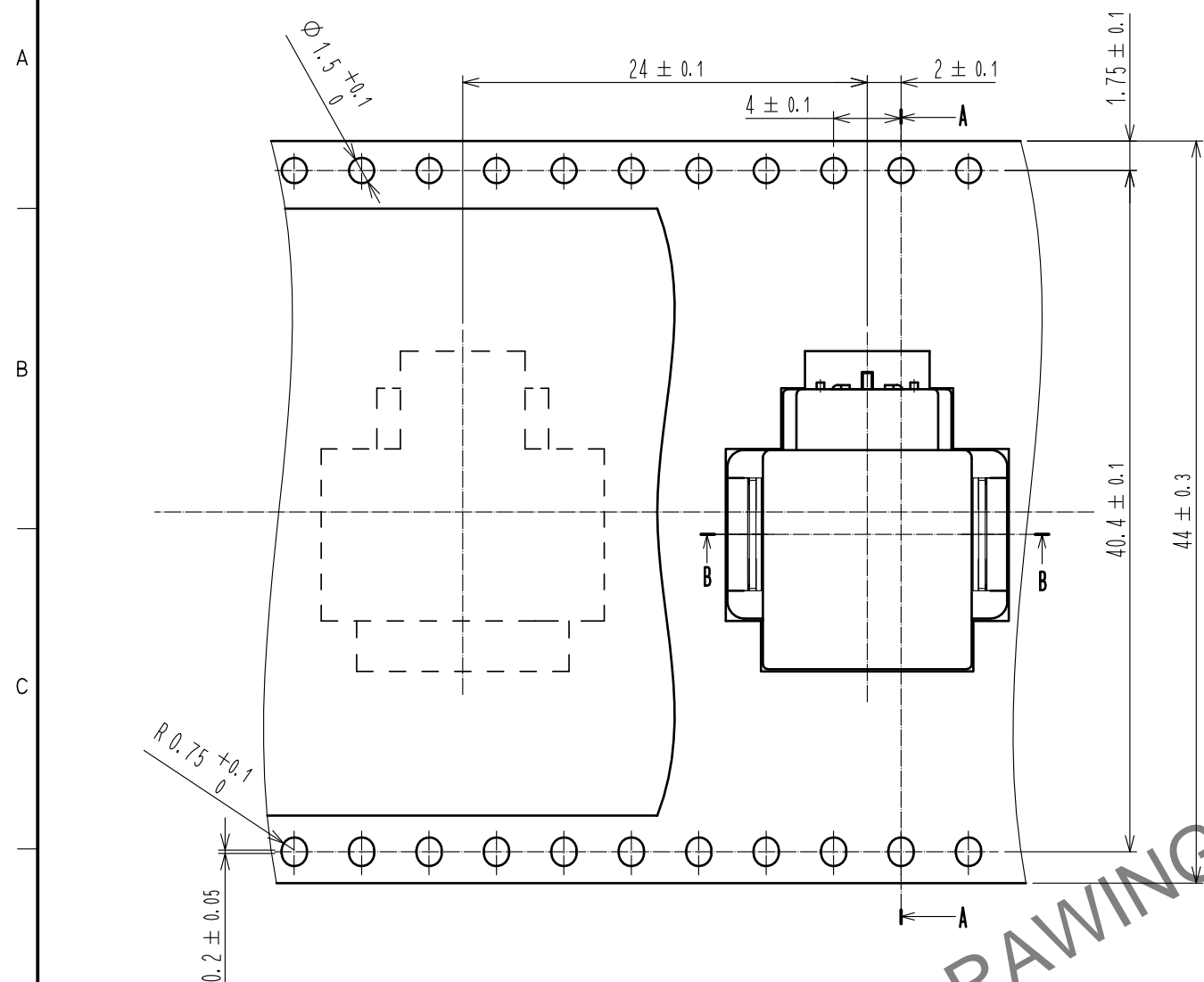
RECOMMENDED PCB PATTERN

- NOTE 1 A MUST BE TAKEN TO OBTAIN IMPEDANCE CHARACTERISTIC OF 50Ω.  
2. THE RECOMMENDED REFLOW TEMPERATURE PROFILE IS AS FIGURE.  
3. LEAD CO-PLANALITY INCLUDE REINFORCED FITTINGS SHALL BE 0.15mm MAX.

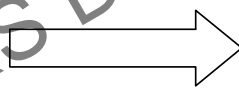
5	PPS	NATURAL	9	PET	COVER TAPE
4	PPS	NATURAL	8	PS	EMBOSSED CARRIER TAPE
3	PHOSPHOR BRONZE	TIN PLATED	7	BRASS	TIN PLATED
2	PHOSPHOR BRONZE	TIN PLATED	6	PHOSPHOR BRONZE	TIN PLATED
1	PPS	BLACK			
NO.	MATERIAL	FINISH . REMARKS	NO.	MATERIAL	FINISH . REMARKS
UNITS mm		SCALE 2 : 1	COUNT 1	DESCRIPTION OF REVISIONS DIS-T-00018049	DESIGNED TS. KUBOTA
HIROSE ELECTRIC CO., LTD.				CHECKED KT. MAKI	DATE 20230512
				DRAWING NO. EDC-363706-00-00	
				PART NO. GT16GH-1P-H	
				CODE NO. CL0766-0118-0-00	
				APPROVED : KI. HIROKAWA 20171122	1
				CHECKED : KT. MAKI 20171122	2
				DESIGNED : AM. YAMAUCHI 20171121	3
				DRAWN : YP. SHEN 20171121	4

May.1.2024 Copyright 2024 HIROSE ELECTRIC CO., LTD. All Rights Reserved.  
In case of consideration for using Automotive equipment / device which demand high reliability, kindly contact our sales window correspondents.

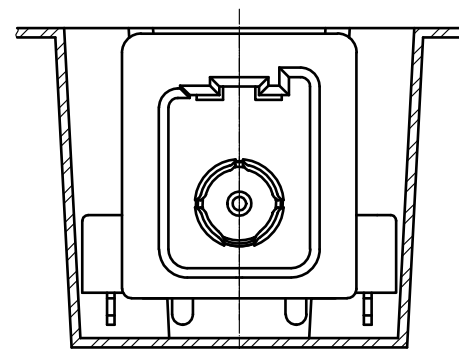
DRAWING FOR PACKAGING



DIRECTION OF UNREELING

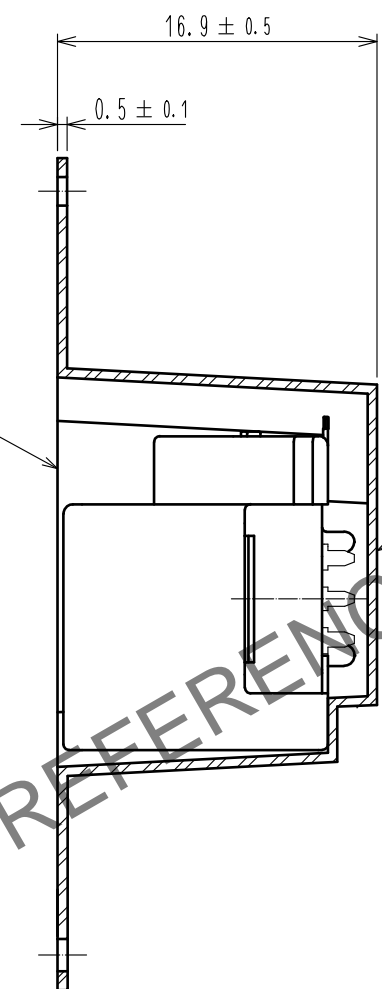


※ Embossed pocket has a different shape to prevent overlapping, and the drawing shows a representative shape.

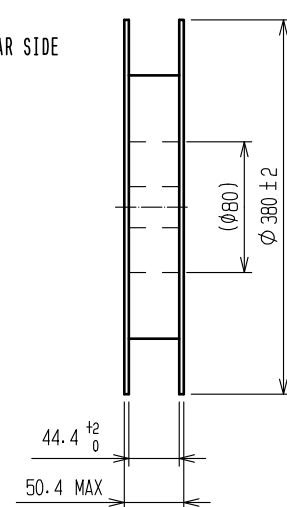
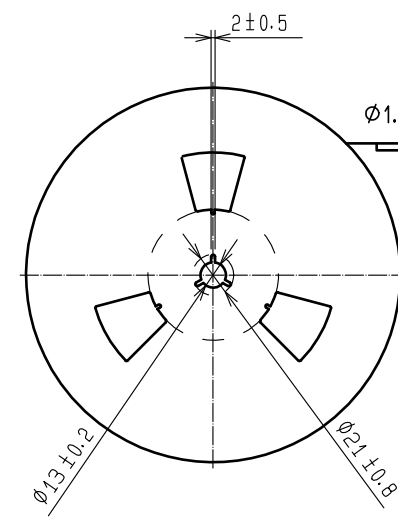


B-B

A-A



REEL DIMENSIONS (FREE)



NOTE 1. NUMBER OF PRODUCTS: 200 pcs/REEL



DRAWING NO.	EDC-363706-00-00
PART NO.	GT16GH-1P-H
CODE NO.	CL0766-0118-0-00

2/2