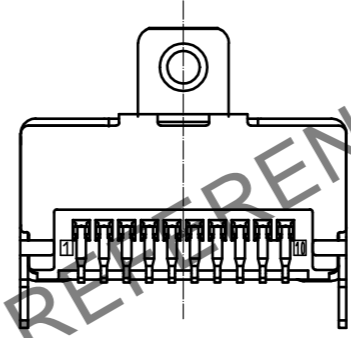
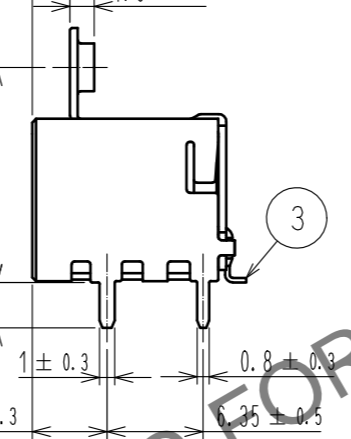
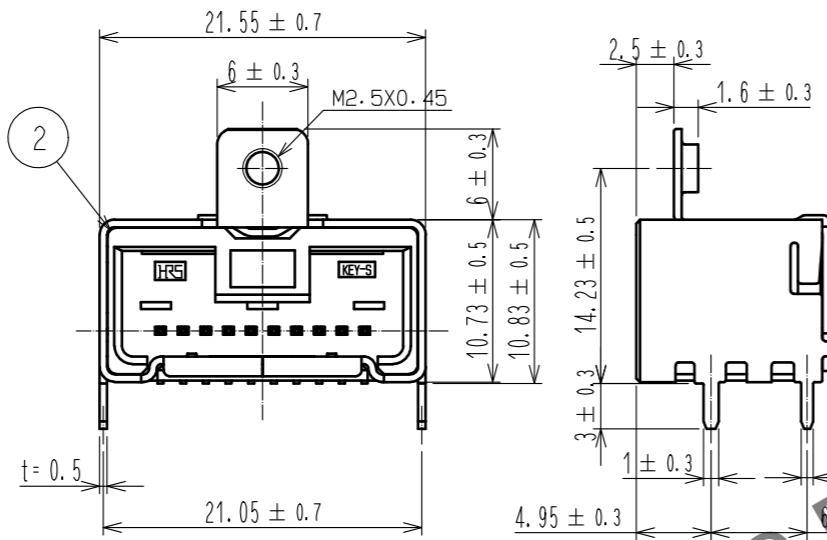
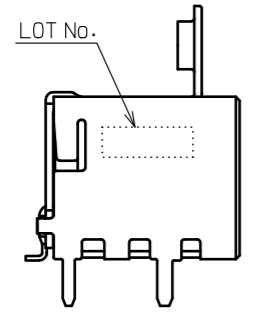
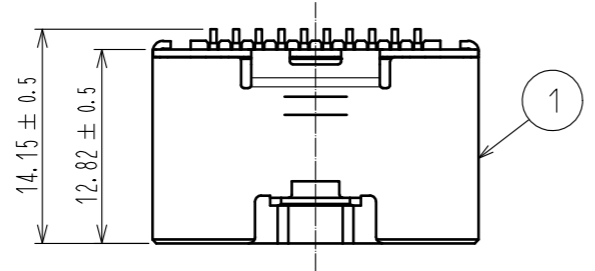
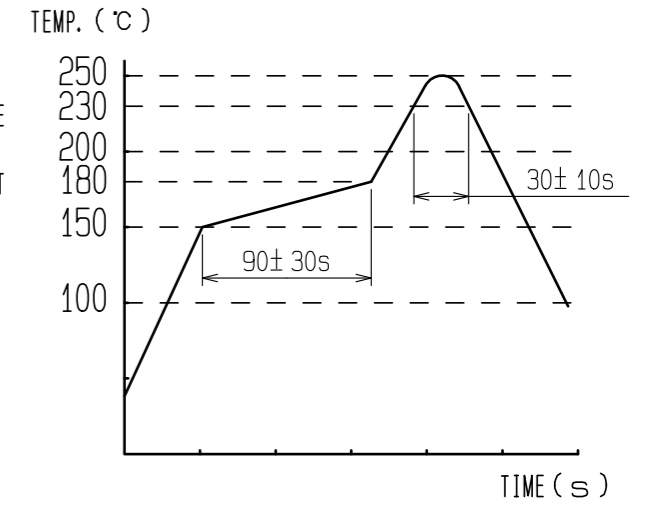


Apr.1.2025 Copyright 2025 HIROSE ELECTRIC CO., LTD. All Rights Reserved.
 In case of consideration for using Automotive equipment / device which demand high reliability, kindly contact our sales window correspondents.

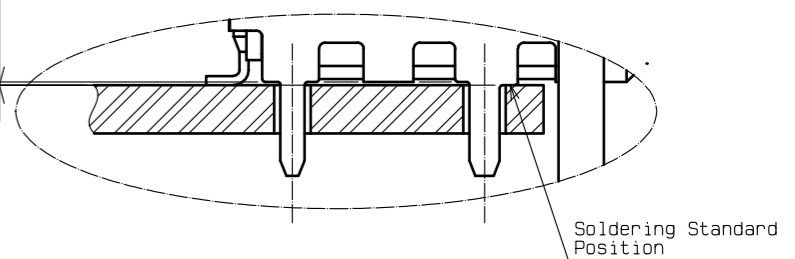
ELV, RoHS COMPLIANT

NOTES

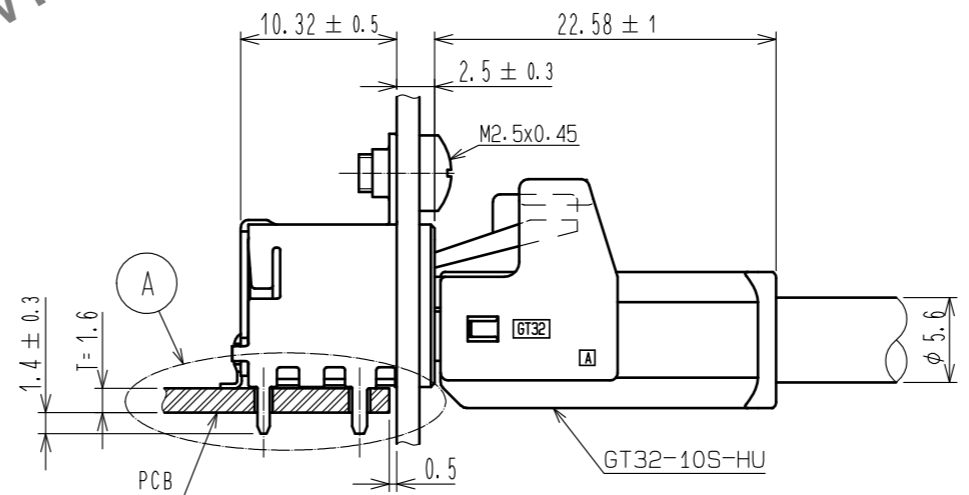
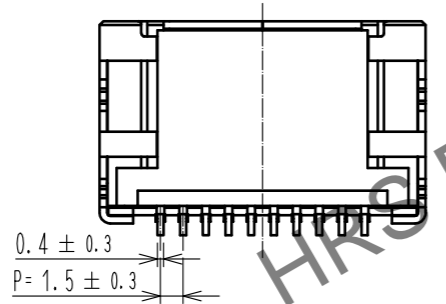
1. RECOMMENDED REFLOW PROFILE (SEE RIGHT GRAPF)
 TYPE: IR REFLOW
 ATMOSPHERE: AIR OR N2
 CYCLE TIME: UP TO 2 CYCLES OF REFLOW SOLDERING ARE POSSIBLE UNDER THE CONDITIONS, PROVIDED THAT THERE IS A RETURN TO NOMAL TEMPERATURE BETWEEN THE FIRST AND SECOND CYCLE.
 PEAK TEMPERATURE: 250°C
 230°C MIN. FOR 20 TO 40 SECONDS.
 PREHEATING AREA 150~180°C FOR 60 TO 120 SECONDS.
2. HAND SOLDERING: 280-300°C, 2S MAX.
3. CONTACT COPLANARITY: 0.1mm MAX.
4. RECOMMENDED THICKNESS OF PCB: 1.6mm
5. RECOMMENDED THICKNESS OF SOLDERING PASTE: 0.15mm



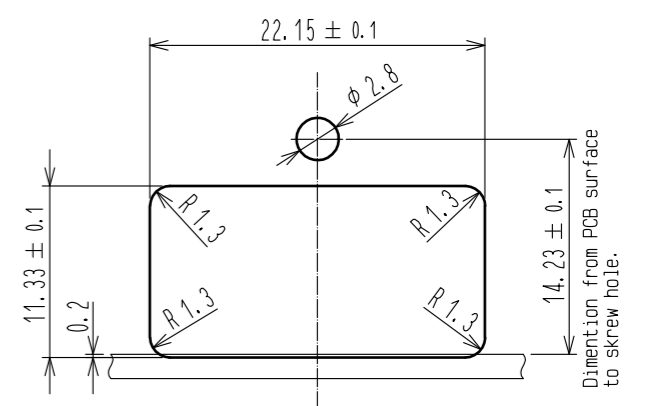
0.1^{+0.1}_{-0.05}
 SMT = 0 ± 0.1



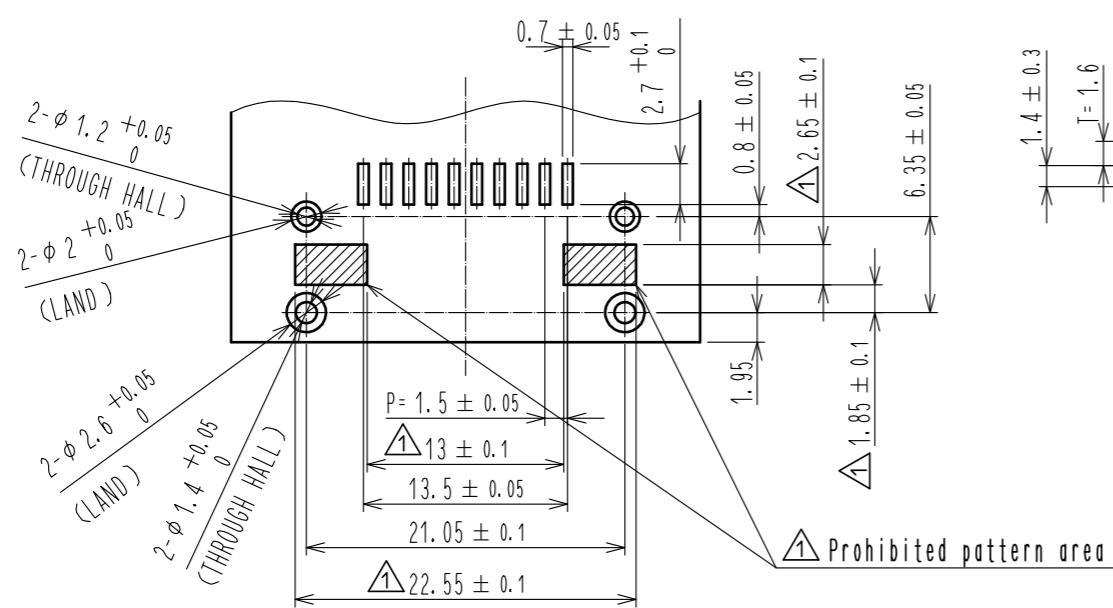
A (4:1)



MATED CONECTERS



RECOMMENDED PANNEL LAYOUT



RECOMMENDED PCB LAYOUT

| | | | | | |
|-----------------------|--------------|------------------|----------|--------------------------|------------------|
| 2 | PPS | LIGHT GRAY | | | |
| 1 | COPPER ALLOY | TIN PLATED | 3 | BRASS | TIN PLATED |
| NO. | MATERIAL | FINISH . REMARKS | NO. | MATERIAL | FINISH . REMARKS |
| UNITS | mm | SCALE | COUNT | DESCRIPTION OF REVISIONS | |
| | | 2 : 1 | 1 | DIS-T-00001389 | |
| APPROVED : AR. SHIRAI | | 11.03.25 | DESIGNED | | |
| CHECKED : NH. NAKATA | | 11.03.24 | CHECKED | | |
| DESIGNED : TS. KUBOTA | | 11.03.18 | DATE | | |
| DRAWN : TS. KUBOTA | | 11.03.18 | 16.08.24 | | |
| DRAWING NO. | | EDC3-168176-00 | | | |
| PART NO. | | GT32-10P-1.5H | | | |
| CODE NO. | | CL782-0001-1-00 | | | |
| | | 1/2 | | | |

Apr.1.2025 Copyright 2025 HIROSE ELECTRIC CO., LTD. All Rights Reserved.
 In case of consideration for using Automotive equipment / device which demand high reliability, kindly contact our sales window correspondents.

△ PACKAGE SPECIFICATIONS

- ①. Place the connectors into the tray. (Cf. Figure of tray shape)
 QTY per tray: 77pcs
- ②. Put the tray for six steps in turn and wind up a PP band.
 Top(the sixth step) is an empty tray.
- ③. Put it in a cardboard box (W=270 H=150 D=360)
 QTY per cardboard: 385 pcs

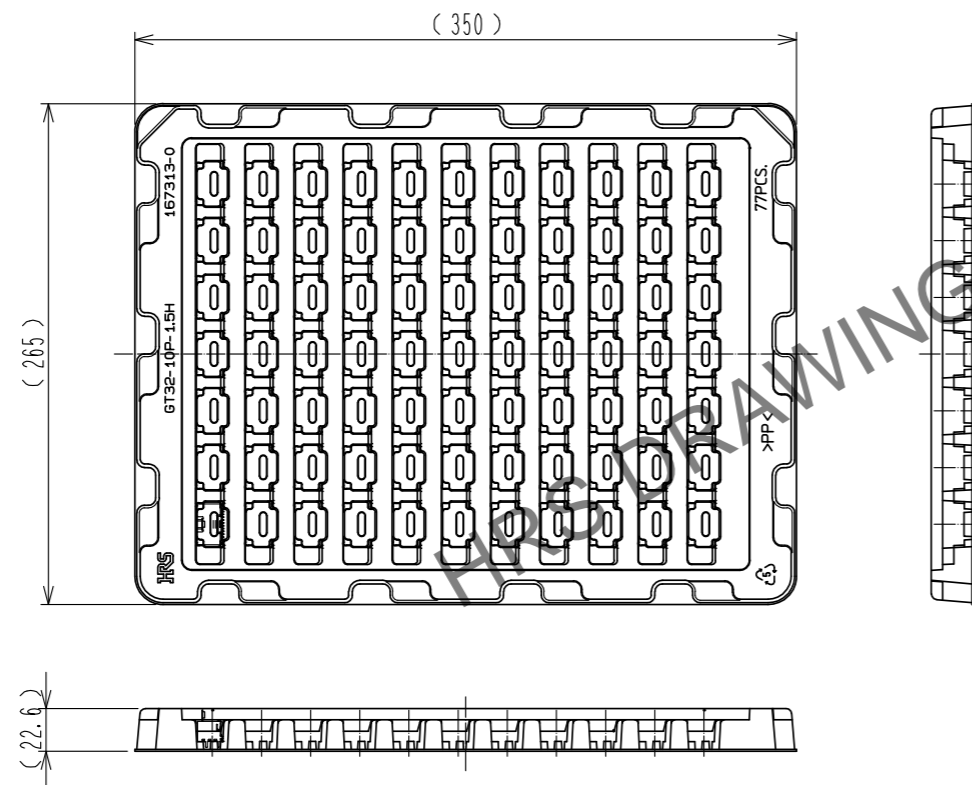


Figure of tray shape (1:4)

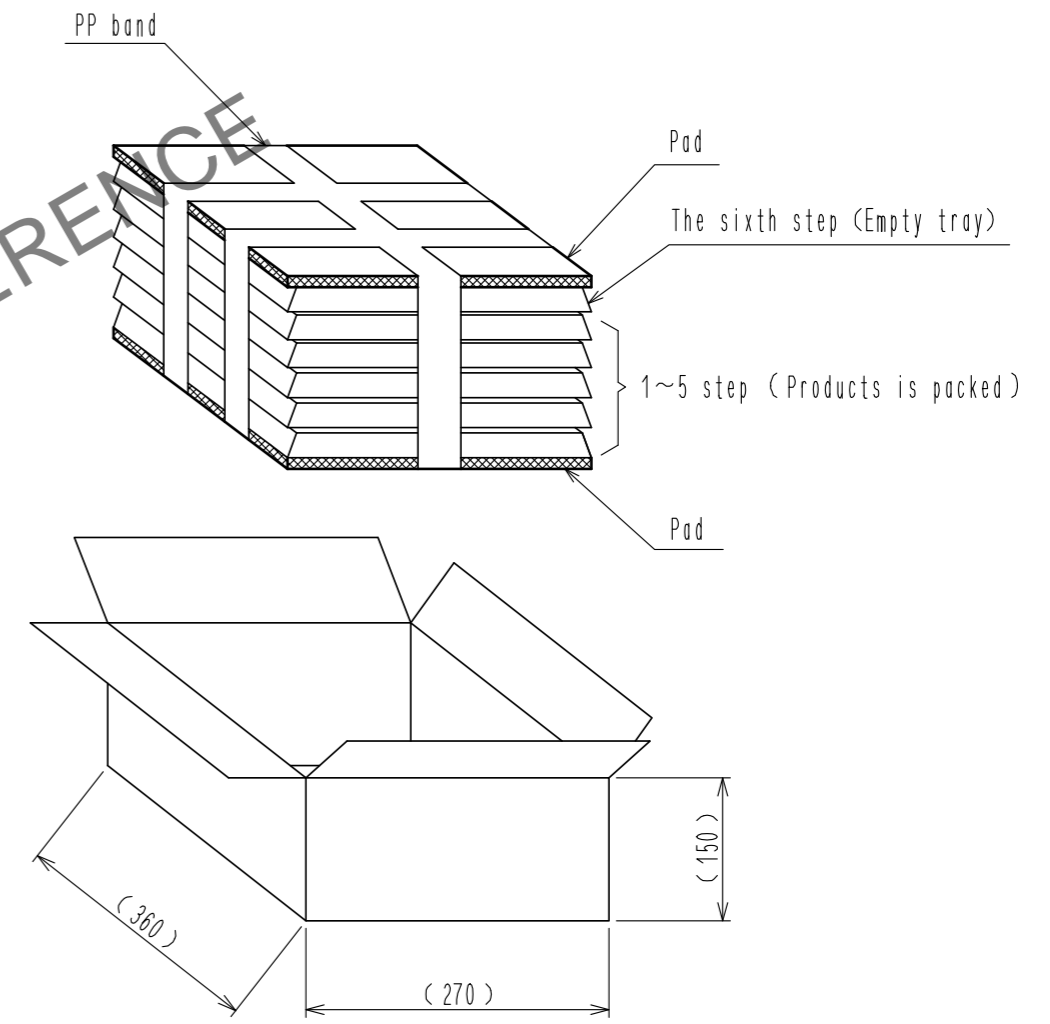


Figure of packing



| | |
|--------|-----------------|
| 図番: | EDC3-168176-00 |
| 製品名: | GT32-10P-1.5H |
| 製品コード: | CL782-0001-1-00 |