

Jan.1.2025 Copyright 2025 HIROSE ELECTRIC CO., LTD. All Rights Reserved.
 In case of consideration for using Automotive equipment / device which demand high reliability, kindly contact our sales window correspondents.

RoHS, ELV COMPLIANT

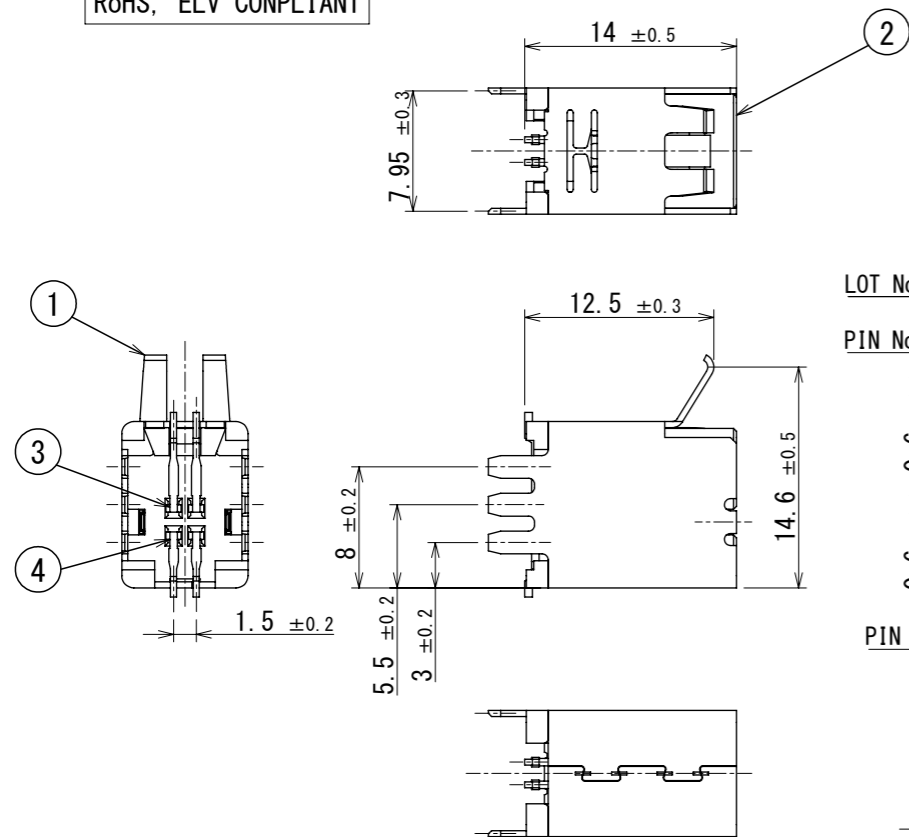
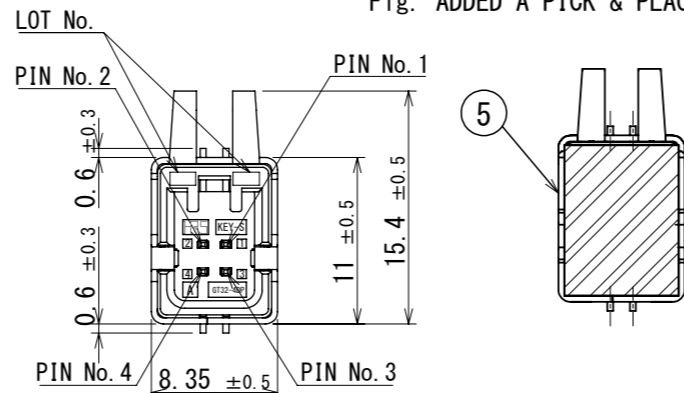
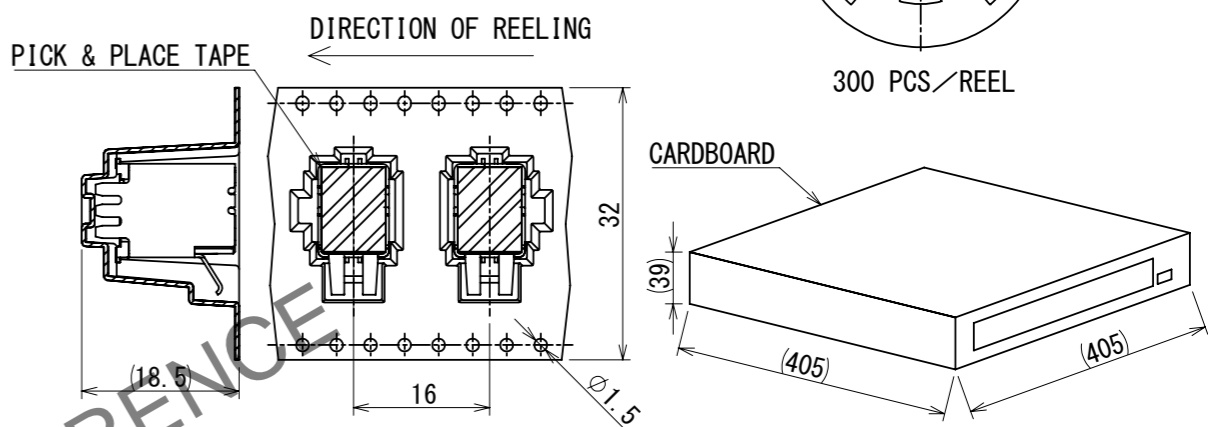
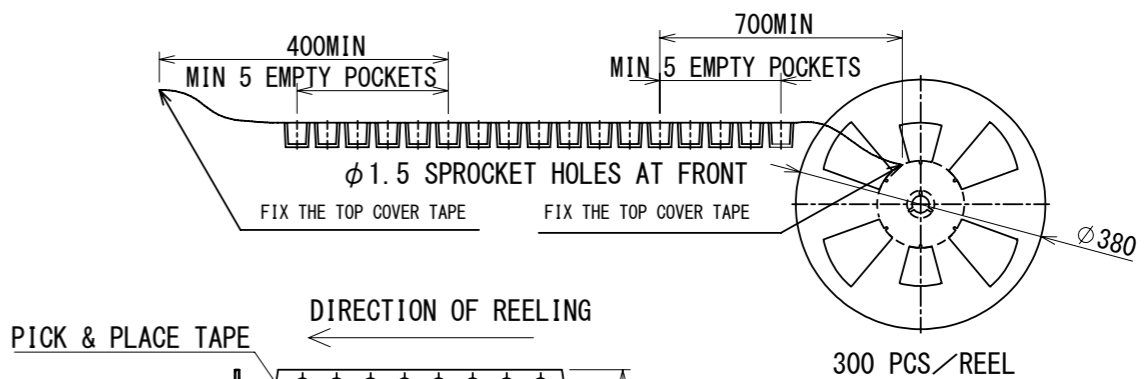


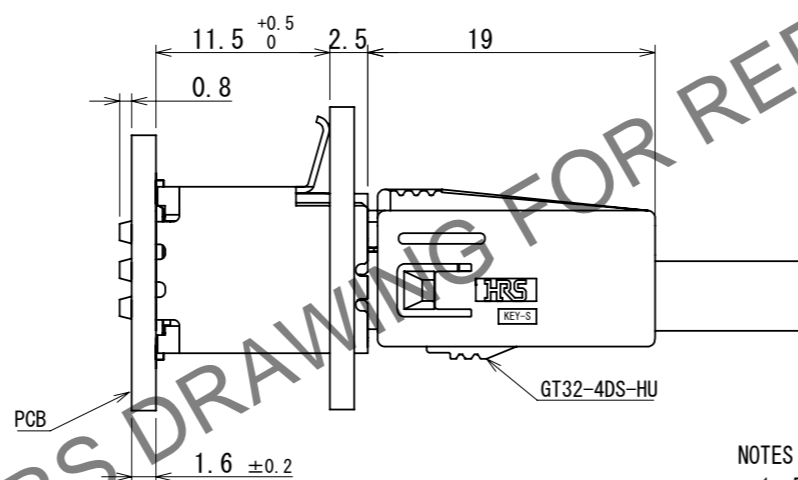
Fig. ADDED A PICK & PLACE TAPE



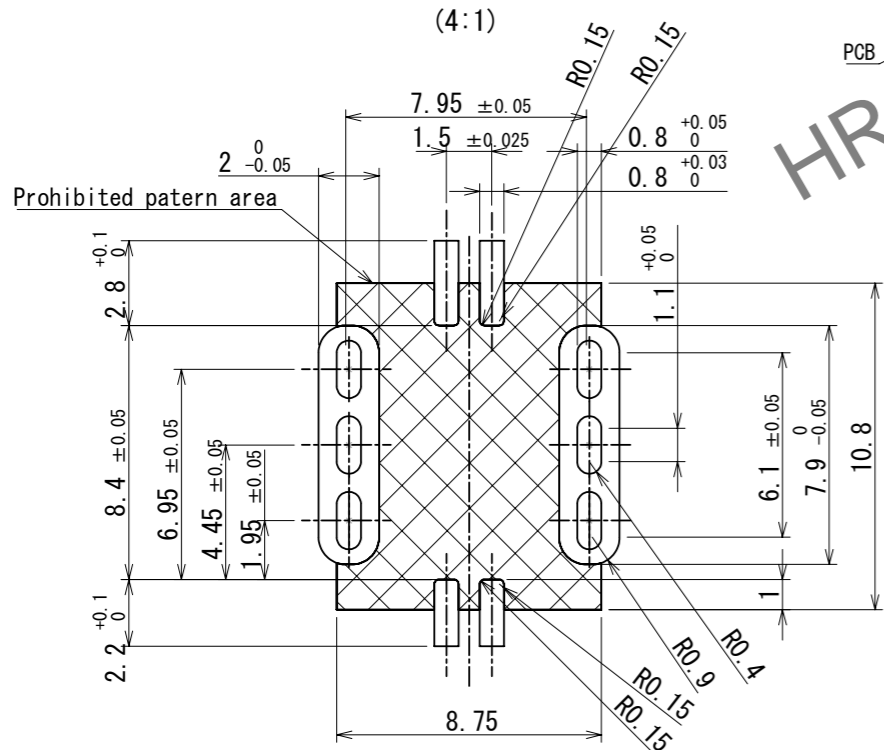
PACKING STYLE



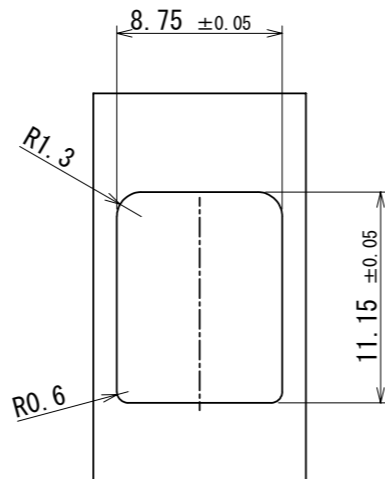
MATED CONNECTORS



RECOMMENDED PCB LAYOUT (4:1)



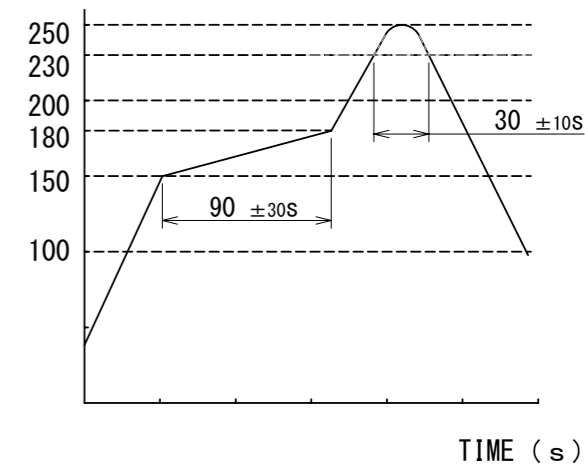
RECOMMENDED PANEL CUTOUT



NOTES

- RECOMMENDED REFLOW PROFILE (SEE RIGHT GRAPH)
 CYCLE TIME: UP TO 2 CYCLES OF REFLOW SOLDERING ARE POSSIBLE UNDER THE CONDITIONS, PROVIDED THAT THERE IS A RETURN TO NOMAL TEMPERATURE BETWEEN THE FIRST AND SECOND CYCLE.
 PEAK TEMPERATURE: 250°C
 230°C MIN, FOR 20 TO 40 SECONDS.
 PREHEATING AREA 150~180°C FOR 60 TO 120 SECONDS.
- HAND SOLDERING: 280~300°C, 2SECONDS MAX.
- CONTACT COPLANARITY: 0.1mm MAX.
- RECOMMENDED THICKNESS OF PCB: 1.6mm
- RECOMMENDED THICKNESS OF SOLDERING PASTE: 0.12mm

TEMP. (°C)



3	BRASS	TIN PLATING	5	POLYIMIDE	PICK & PLACE TAPE				
2	PA	DARK GRAY	4	BRASS	TIN PLATING				
1	COPPER ALLOY	TIN PLATING							
NO.	MATERIAL	FINISH	REMARKS	NO.	MATERIAL	FINISH	REMARKS		
UNITS	mm	SCALE	2:1	COUNT	0	DESCRIPTION OF REVISIONS	DESIGNED	CHECKED	DATE
						DIS-T-00018485	KN. YANAGIMOTO	EJ. WAKATSUKI	2023. 10. 19
APPROVED : AR. SHIRAI		2017. 12. 08		DRAWING NO.		EDC-361305-30-01			
CHECKED : TH. MIZUGUCHI		2017. 12. 07		PART NO.		GT32-4DP-1.5V (30)			
DESIGNED : TS. KUBOTA		2017. 12. 07		CODE NO.		CL0782-0060-0-30			
DRAWN : TS. KUBOTA		2017. 12. 07							