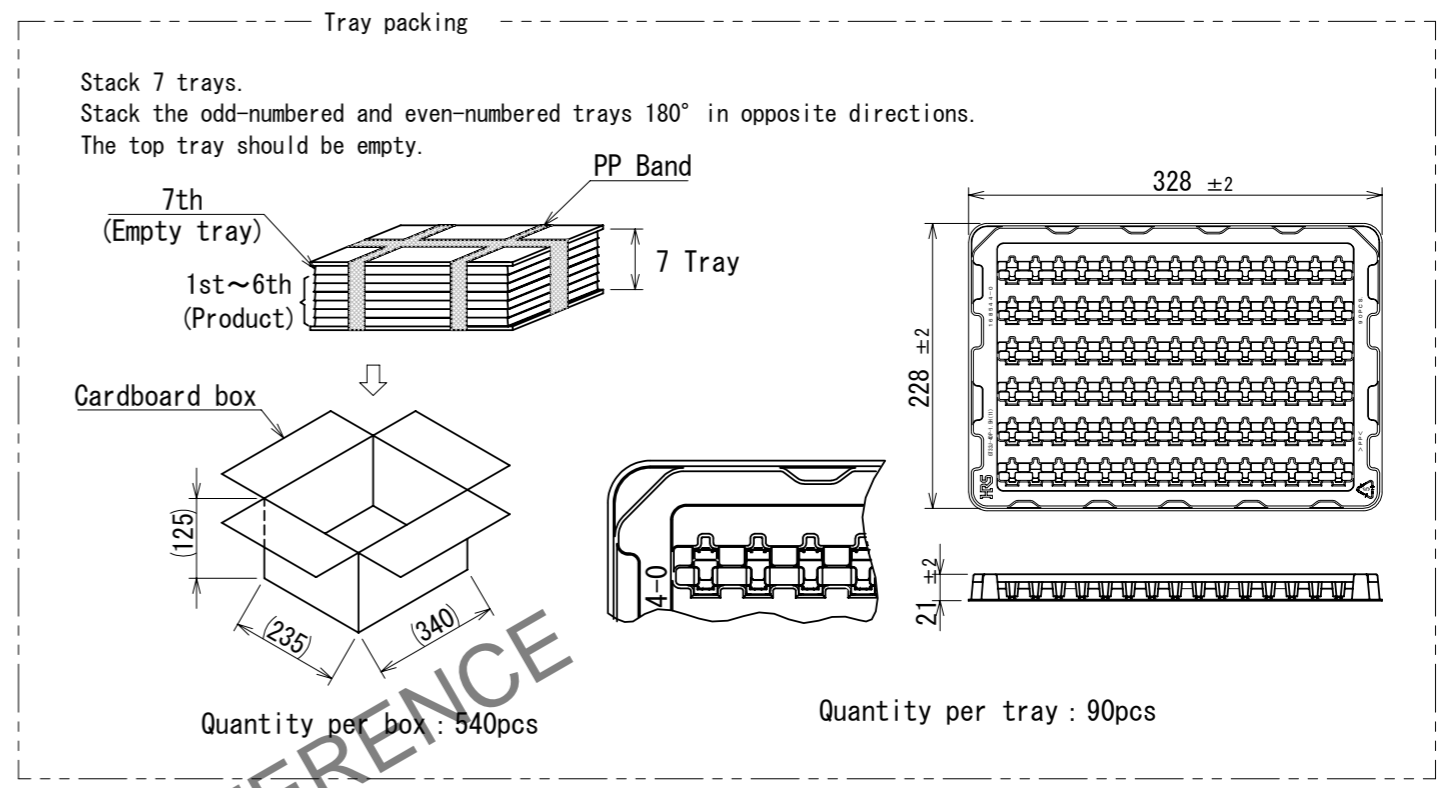
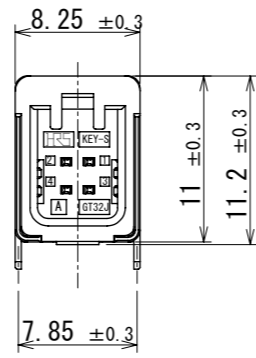
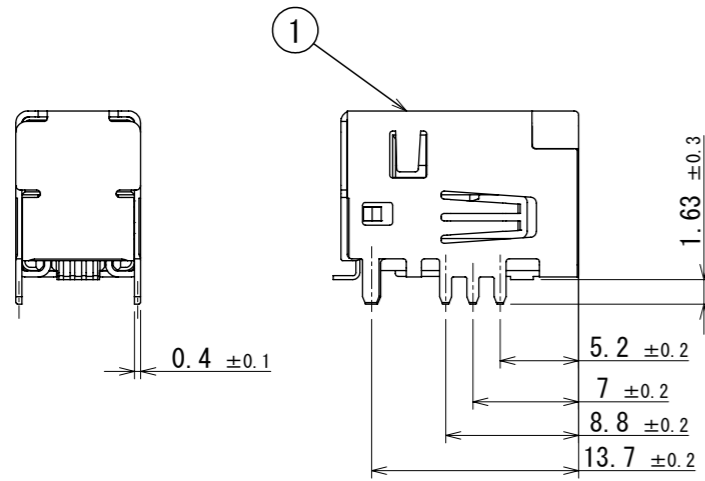
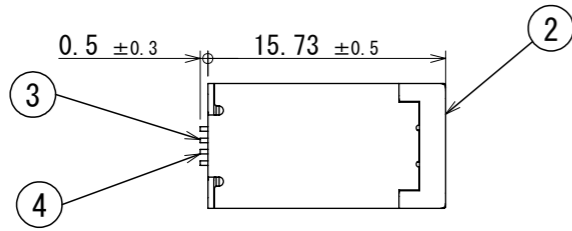
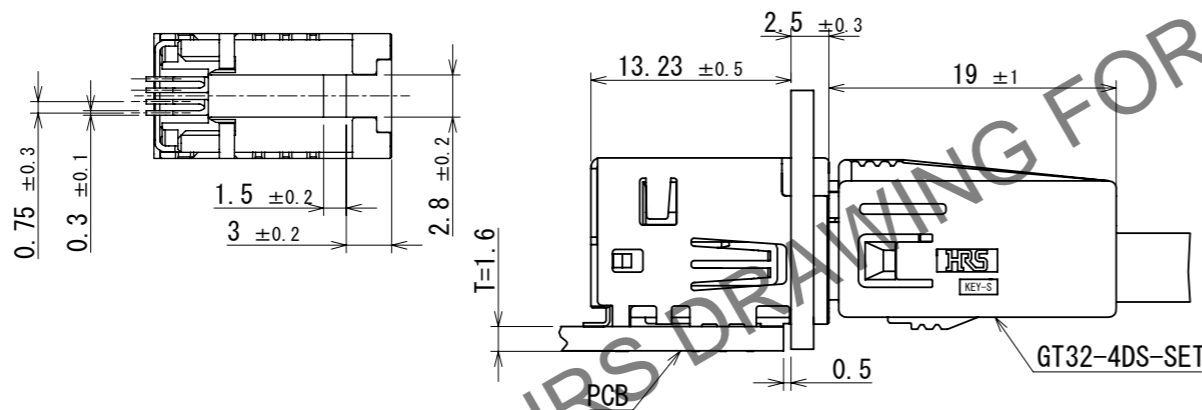


Jan.1.2025 Copyright 2025 HIROSE ELECTRIC CO., LTD. All Rights Reserved.
In case of consideration for using Automotive equipment / device which demand high reliability, kindly contact our sales window correspondents.

ELV, RoHS COMPLIANT



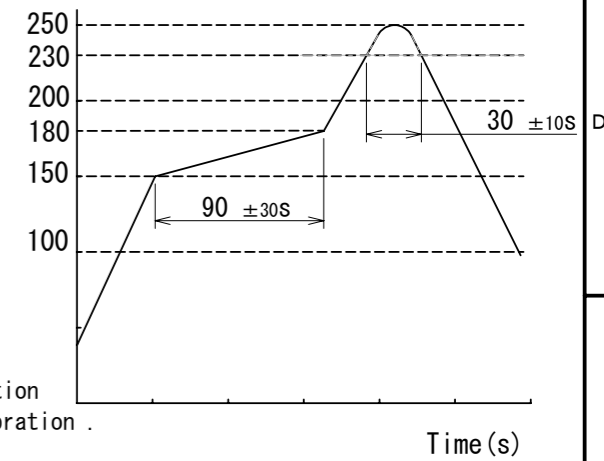
Mounting and mating state



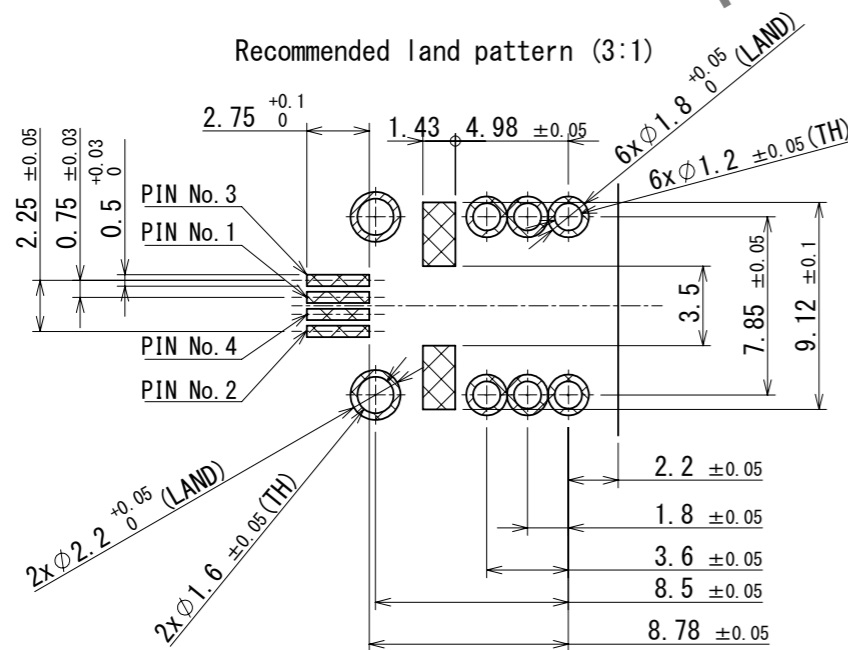
NOTES

- Recommended temperature profile (see graph on the right)
Number of reflow times : 2 times
Peak temperature : 250°C
230° C or higher : 20 to 40s
Preheat temperature : 150 to 180°C, 60 to 120s
- Hand soldering / soldering iron temperature:
280 to 300°C, within 2s.
- Terminal coplanarity 0.1mm MAX
- Recommended PCB thickness: T=1.6mm.
- Recommended solder paste thickness: 0.12mm.
- ⊗ in the Recommended land pattern (3:1) is the pattern prohibited area.
- When routing the cable, secure the cable with appropriate position so that the wiring harness should not be pried or shaken by vibration.

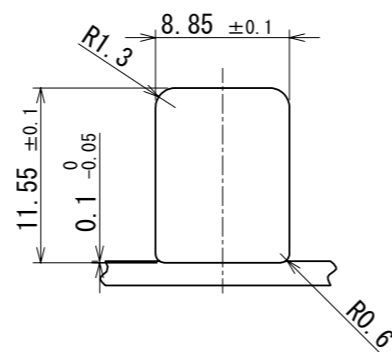
Temp. (°C)



Recommended land pattern (3:1)



Panel size



2	PA	DARK GRAY	4	BRASS	TIN PLATING		
1	COPPER ALLOY	TIN PLATING	3	BRASS	TIN PLATING		
NO.	MATERIAL	FINISH	REMARKS	NO.	MATERIAL	FINISH	REMARKS
UNITS	mm	SCALE	2:1	COUNT	0	DESCRIPTION OF REVISIONS	DIS-T-00018419
APPROVED : KI. HIROKAWA 2021. 12. 16				DESIGNED : KN. YANAGIMOTO			
CHECKED : EJ. WAKATSUKI 2021. 12. 16				CHECKED : EJ. WAKATSUKI			
DESIGNED : YK. KANNO 2021. 12. 16				DATE : 2023. 06. 19			
DRAWN : YK. KANNO 2021. 12. 16				DRAWING NO. : EDC-393578-11-00			
HRS HIROSE ELECTRIC CO., LTD.				PART NO. : GT32J-4DP-1.5H(11)			
				CODE NO. : CL0782-0085-0-11			