

BK13C Series

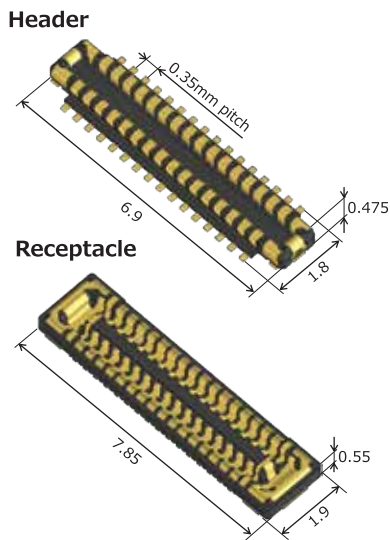
0.35mm Pitch, Low-Profile, Fully Armored, Hybrid FPC-to-Board Connector Supporting 5A

FEATURES:

- Low-profile design with high current power supply capability
 - Rated current: 5A for power contact, 0.3A for signal contact
 - 0.6mm stacking height, 1.9mm width
- Full armored design prevents housing damage
- Easy mating operation with wide self alignment range
- Molded Design Prevents Solder Wicking
- Improved PCB peeling strength by multi-point solder pads

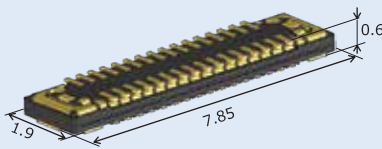
Dimensions

Example Dimensions (32pos.)



Mated Condition

Stacking Height: 0.6mm



Variations / Dimensions

BK13C		Height	Width	Length
32pos.	Header	0.475	1.8	6.9
	Receptacle	0.55	1.9	7.85
40pos.	Header	0.475	1.8	8.3
	Receptacle	0.55	1.9	9.25

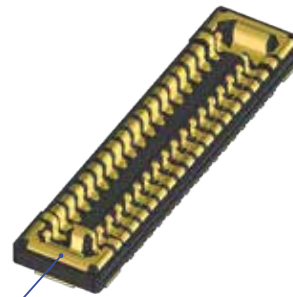
Longitudinal Dimension

Header: $(0.175 \times \text{Pos.}) + 1.3$
 Receptacle: $(0.175 \times \text{Pos.}) + 2.25$

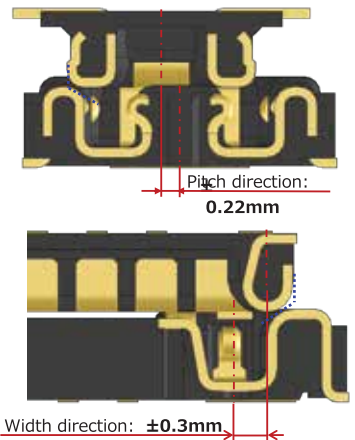
Wide Self-Alignment Range

SELF-ALIGNMENT RANGE

Pitch direction: $\pm 0.22\text{mm}$, Width direction: $\pm 0.3\text{mm}$

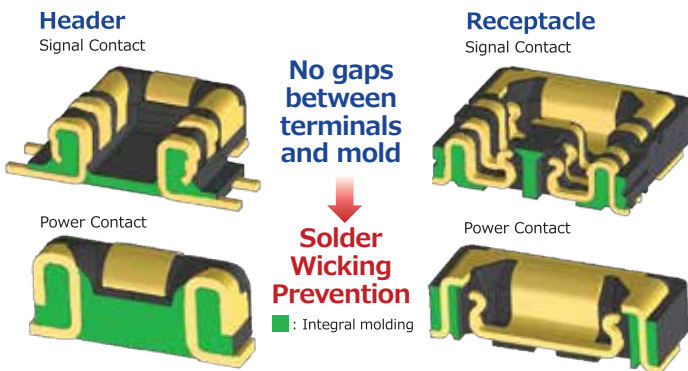


Metal Guide Ribs
 Effectively uses dead space to expand self-alignment range when mating

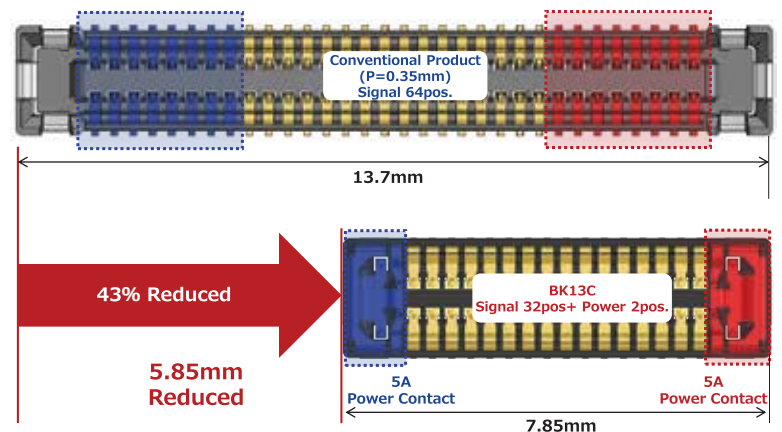


Easy Mating Operation

Solder Wicking Prevention



Hybrid Contacts with 5A Power

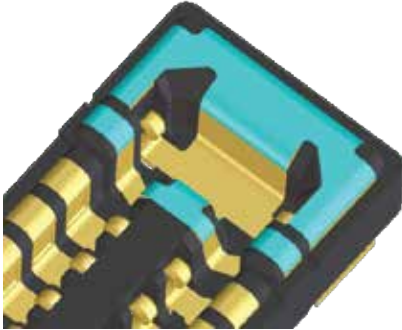


Power contact saves space



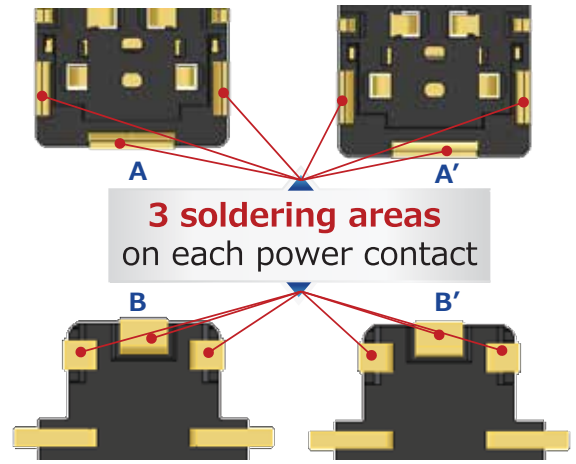
Robust Design

Full Armored



Housing is fully covered by metal

Multi-Point Solder Pads



Improves PCB Peeling Force

Specifications

MATERIAL AND FINISH

Component	Material	Finish, Remarks
Housing	LCP*	Black, UL94V-0
Signal Contact	Copper alloy	Gold plated (Nickel under-plating)
Power Contact	Copper alloy	Gold plated (Nickel under-plating)

*This product satisfies halogen free requirements defined as 900ppm maximum chlorine, 900ppm maximum bromine, and 1500ppm maximum total of chlorine and bromine.

PERFORMANCE CHARACTERISTICS

Rated Current	Power contact: 5A Signal contact: 0.3A
Rated Voltage	30V AC/DC
Operating Temperature	-55 to +85°C*
Contact Resistance	Power contact: 30mΩ Max. Signal contact: 90mΩ Max.
Withstanding Voltage	100V AC for 1 min.
Insulation Resistance	50MΩ Min. (100V DC)
Mating Durability	10 times

- Variations: 32, 40pos.

*Includes the temperature rise by current flow.



For additional information please go to
<https://www.hirose.com/product/series/BK13C>
 Specifications herein are subject to change without notice.
 Contact Hirose for latest specifications, drawings, or availabilities.

