

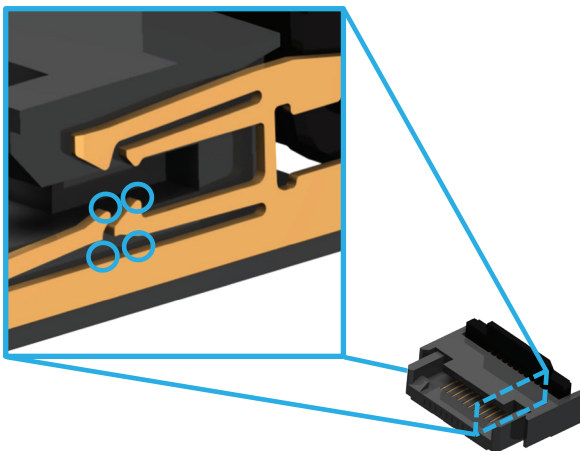
FH69 Series

0.5mm Pitch, 2.3mm Height,
Top & Bottom Independent Two-Point Contact,
125°C* Heat Resistance Back Flip FPC/FFC Connector

FEATURES:

1. Industry's first top & bottom independent two-point contact design
 - Highly reliable contact resistant to dust intrusion, shock and vibration
 - Design safe for use in harsh conditions
2. Top & bottom contact design improves board design flexibility and ease of assembly
3. Land pattern compatible with FH75, FH52E/K/T and FH28K, reducing labor time during substitution
4. 125°C* heat resistance satisfies stringent test requirements for various types of automotive applications

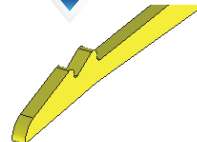
1. Industry's First Top & Bottom Independent 2-point Contact Design



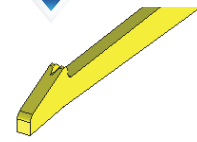
Each of the 4 contact points on the top and bottom maintains independent spring properties.

Even if dust is caught in one contact point, the other contacts remain in contact, unlike Two-Rib Contact or V-Cut Contact.

Two-Rib Contact

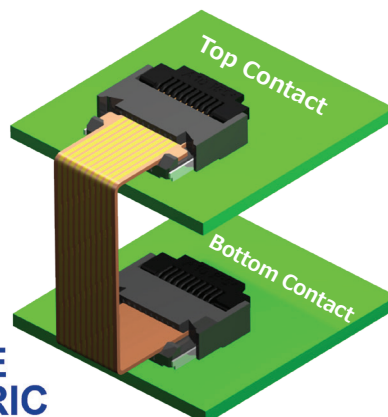


V-Cut Contact



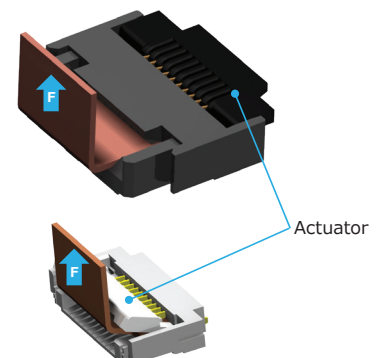
2. Top & bottom contact design improves board design flexibility and ease of assembly

**Universal Use
Regardless of
Contact Direction**



**Back Flip Design: Resistant to
Upward and Downward Routing**

Back Flip Design:
Secure closure
**Prevents unexpected
actuator opening**

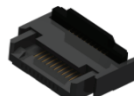
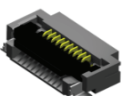
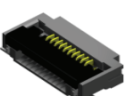


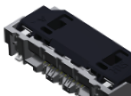


Front Flip Design:
Easy to Open

HRS HIROSE
ELECTRIC
CO., LTD.

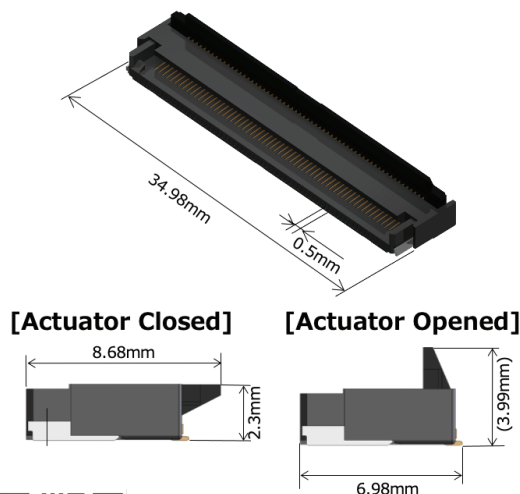
3. Land pattern compatible with FH75, FH52E/K/T, and FH28K, reducing labor time during substitution

FPC/FFC Connectors Variations for Automotive

Product Name	FH69	FH75	FH52K	FH28K	FH65	FH63S
Product Image						
Pitch (mm)	0.5					
Height (mm)	2.3	2.0		2.55	1.2	2.8
Heat Resistance	+125℃*					
Contact Point	Top & Bottom Contact	Bottom Contact Point				
Number of Contact Points	Top & Bottom: Two-Point	Two-Point	One-Point			Two-Point
Lock	Back Flip	Front Flip				One Action Lock
Land Pattern	[FH69 Exclusive] Land Pattern compatible with FH75, FH52E/K/T, and FH28K	[Compatible] Can be used with FH69		[FH28K Exclusive] Can be used with FH69	FH65 Exclusive	FH63S Exclusive
FPC/FFC Pattern	Compatible			[FH28K Exclusive] Can be used with FH69	FH65 Exclusive	FH63S Exclusive

Dimensions

Dimensions Example : 60pos.
Item Name : FH69-60S-0.5SH



For additional information please go to
<https://www.hirose.com/product/series/FH69>
Specifications herein are subject to change without notice.
Contact Hirose for latest specifications, drawings, or availabilities.

Specifications

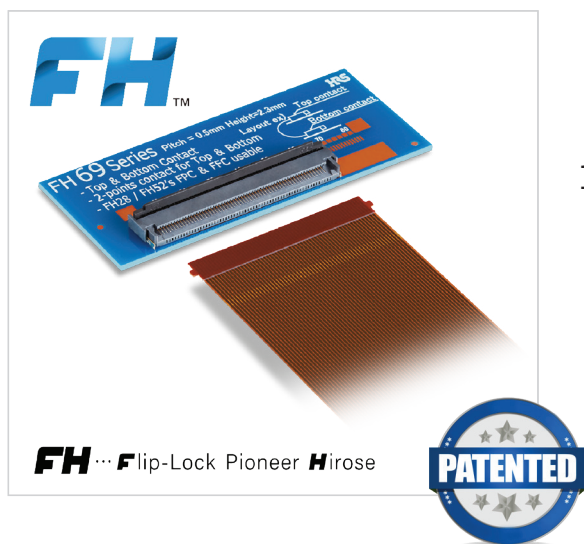
Rated Current	0.5A
Rated Voltage	50V AC/DC
Operating Temperature	-55 to +125°C* ¹
Contact Resistance* ²	Initial : 50mΩ Max. After the Test: 70mΩ Max. * ² Includes FPC/FFC Conductor Resistance (L=8mm)
Withstanding Voltage	150V AC for 1 min.
Insulation Resistance	500MΩ Min. (100V DC)
Mating Durability	10 times

- RoHS, Halogen-free *³ Compliant
- No. of Pos. : 60pos. (Mass Production)
10, 20, 30, 40, 50pos. (Planned for Production)

*³This product satisfies halogen free requirements defined as 900ppm maximum chlorine, 900ppm maximum bromine, and 1500ppm maximum total of chlorine and bromine.

STAY CONNECTED





FH69 Series

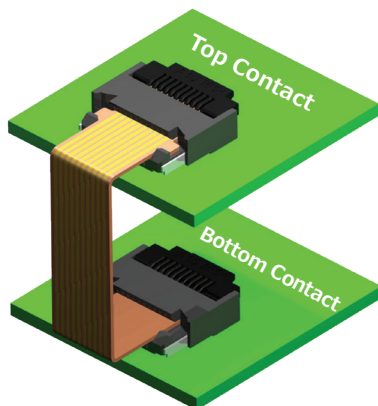
0.5mm Pitch, 2.3mm Height,
Top & Bottom Independent Two-Point Contact,
125°C* Heat Resistance Back Flip FPC/FFC Connector

FEATURES:

1. Industry's first top & bottom independent two-point contact design
 - Highly reliable contact resistant to dust intrusion, shock and vibration
 - Design safe for use in harsh conditions
2. Top & bottom contact design improves board design flexibility and ease of assembly
3. Land pattern compatible with FH75, FH52E/K/T and FH28K, reducing labor time during substitution
4. 125°C* heat resistance satisfies stringent test requirements for various types of automotive applications

Top & bottom contact design improves board design flexibility & ease of assembly

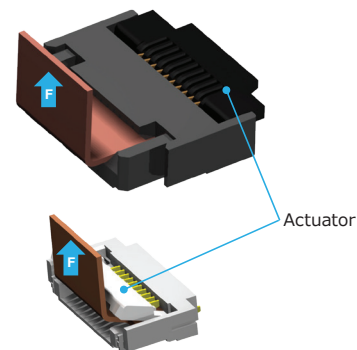
**Universal Use
Regardless of
Contact Direction**



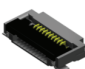
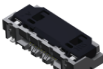
**Back Flip Design: Resistant to
Upward and Downward Routing**

Back Flip Design:
Secure closure
**Prevents unexpected
actuator opening**

Front Flip Design:
Easy to Open



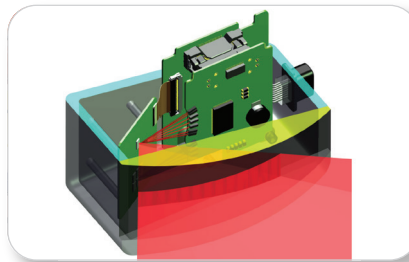
Land pattern compatible
with FH75, FH52E/K/T,
and FH28K, reducing
labor time during
substitution

Product Name	FH69	FH75	FH52K	FH28K	FH65	FH63S
Product Image						
Pitch (mm)	0.5					
Height (mm)	2.3	2.0		2.55	1.2	2.8
Heat Resistance	+125℃*					
Contact Point	Top & Bottom Contact	Bottom Contact Point				
Number of Contact Points	Top & Bottom: Two-Point	Two-Point	One-Point			Two-Point
Lock	Back Flip	Front Flip				One Action Lock
Land Pattern	[FH69 Exclusive] Land Pattern compatible with FH75, FH52E/K/T, and FH28K	[Compatible] Can be used with FH69		[FH28K Exclusive] Can be used with FH69	FH65 Exclusive	FH63S Exclusive
FPC/FFC Pattern	Compatible			[FH28K Exclusive] Can be used with FH69	FH65 Exclusive	FH63S Exclusive

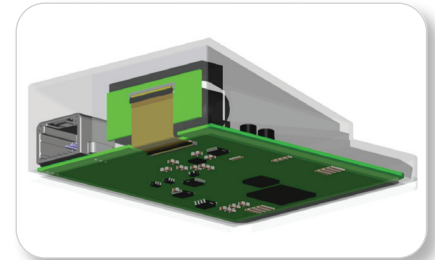
Applications



Car Navigation, Car Audio



LiDAR



Sensing Camera

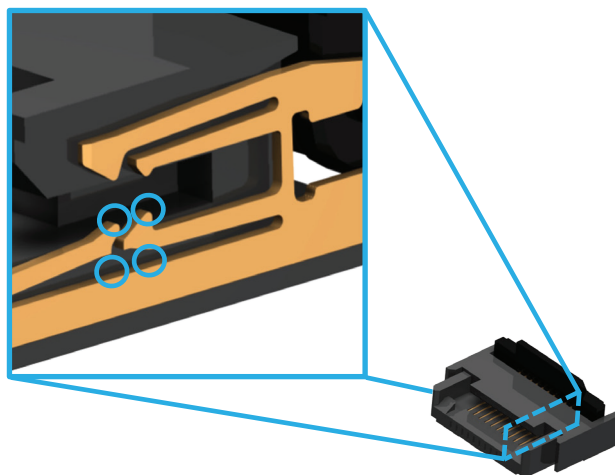


Meter Cluster



Other Industrial Equipment

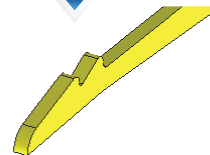
FH69 Series Competitive Advantages



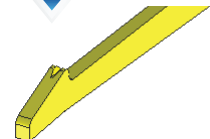
Each of the 4 contact points on the top and bottom maintains independent spring properties.

Even if dust is caught in one contact point, the other contacts remain in contact, unlike Two-Rib Contact or V-Cut Contact.

Two-Rib Contact



V-Cut Contact



For additional information please go to
<https://www.hirose.com/product/series/FH69>
 Specifications herein are subject to change without notice.
 Contact Hirose for latest specifications, drawings, or availabilities.

STAY CONNECTED

