



## TF42 Series

0.35mm Pitch/0.9mm Height/Bottom Contact  
Back Flip(Front Axis™ Type), FPC Connector

### FEATURES:

- ▶ Space saving
  - 0.35mm Pitch, 3.0mm Mounting Depth, 0.9mm Height
- ▶ Back flip design (Front Axis™ Type)
  - Actuator is closed when mounted on board to prevent damage during delivery
  - Contact gap for FPC insertion is guaranteed regardless of actuator operation
- ▶ High reliability
  - High FPC retention force with FPC side-catcher design
  - Solder wicking and flux penetration prevention
- ▶ Environmental compliance
  - RoHS compliant, Halogen-free product\*1

\*1 This product satisfies halogen free requirements defined as 900ppm maximum chlorine, 900ppm maximum bromine, and 1500 ppm maximum total of chlorine and bromine.

## Dimensions

**[In a closed state]**

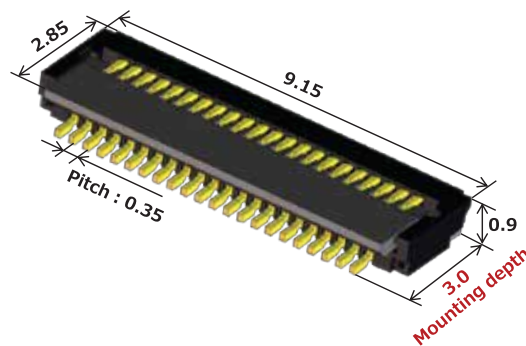
**[In an opened state]**

**Variations and Dimensions**

Pos.	Height	Mounting depth	Width
16	0.9	3.0	7.05
22	0.9	3.0	9.15
24	0.9	3.0	9.85

### Example (22 Pos.)

Product : TF42-22S-0.35SH  
0.35mm Pitch, 0.9mm Height

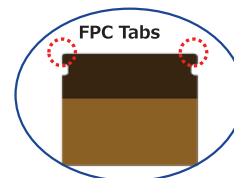
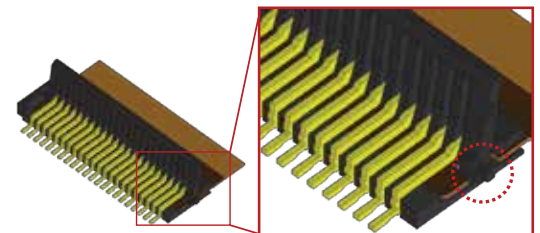


## High FPC Retention Force

### Stable & reliable connection

The FPC's notch catches on actuator axis, allowing...

- Stable temporary FPC retention
- Easy and accurate FPC positioning
- Consistent connection regardless of worker's skill



**FPC Retention Force**  
in Horizontal direction:  
11.7N (22 Pos.)

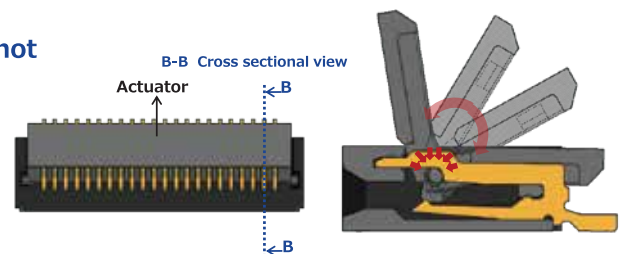
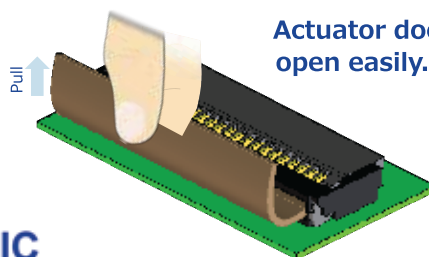
Back Flip design enables superior FPC retention force

Excellent FPC retention force in vertical direction

**TF42**

In vertical direction  
11.0N (22 Pos.)

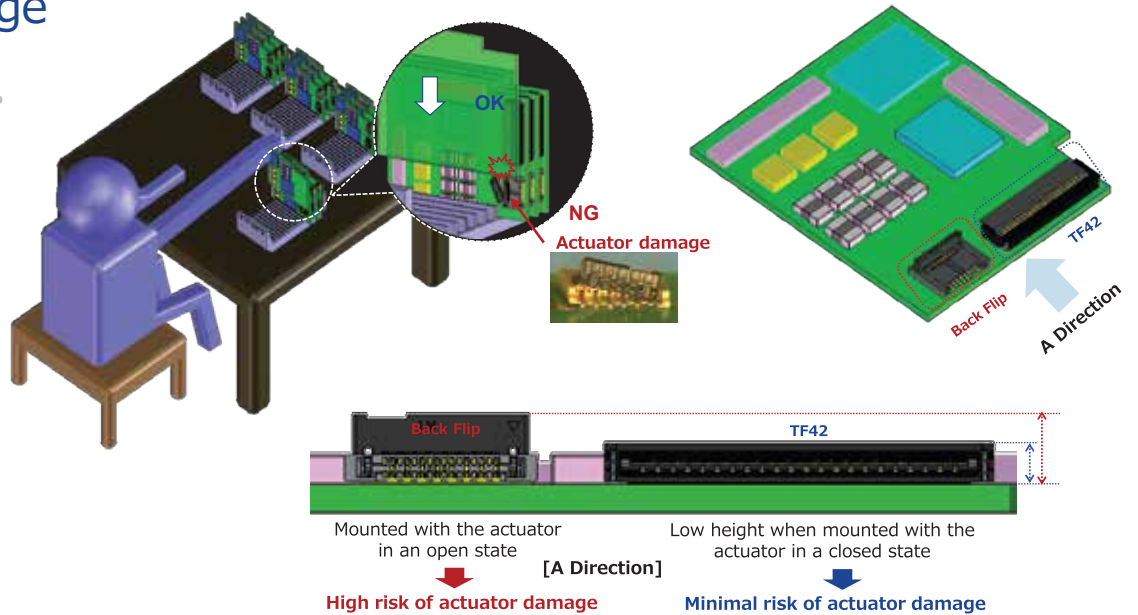
Actuator does not open easily.



⇒ Contact surrounds the axis of the actuator

## Actuator Damage Prevention

When stacking in a rack, lower risk of actuator damage due to mounting in a closed state



## Specifications

### MATERIAL AND FINISH

Component	Material	Finish, Remarks
Housing	LCP*1	UL94V-0/Black
Actuator	LCP*1	UL94V-0/Black
Contact	Phosphor Bronze	Au plating over Nickel
Metal Fitting	Phosphor Bronze	Sn plating over Nickel

### PERFORMANCE CHARACTERISTICS

Rated Current	0.4A
Rated Voltage	30V AC/DC
Operating temperature range	-55°C to +85°C
Contact Resistance*2	100mΩ Max.
Insulation Resistance	500MΩ Min. (DC 100V)
Withstanding Voltage	150V AC for 1 minute
Reflow temperature	Max.250°C*3

\*1 This product satisfies halogen free requirements defined as 900ppm maximum chlorine, 900ppm maximum bromine, and 1,500ppm maximum total of chlorine and bromine.

\*2 FPC resistance is included.

\*3 Lead-free solder has been used.



For additional information please go to  
<https://www.hirose.com/product/series/TF42>  
 Specifications herein are subject to change without notice.  
 Contact Hirose for latest specifications, drawings, or availabilities.

STAY CONNECTED

