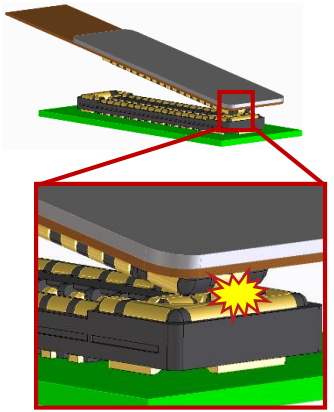


Features

- 1 Low-profile design with high current power supply capability  
- Rated current: 5A for power contact, 0.3A for signal contact  
- 0.6mm stacking height, 1.9mm width
- 2 Full armored design prevents housing damage
- 3 Easy mating operation with wide self alignment range
- 4 Integrally molded header and receptacle design  
- Solder Wicking Prevention
- 5 Improved PCB peeling strength by multi-point soldering

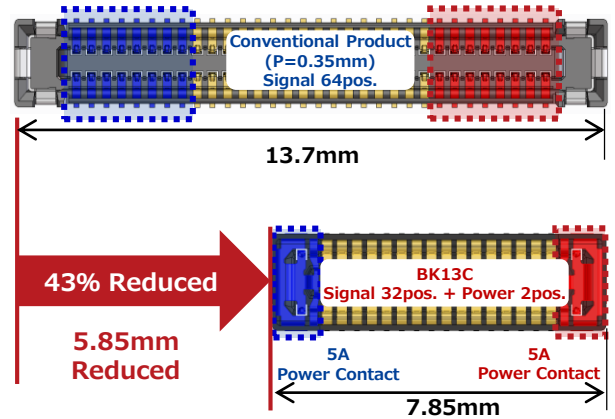
Robust Design

Full armored design prevents housing damage



High Current (5A)

Power contact saves space



Specifications

Rated Current	Power Contact: 5A Signal Contact: 0.3A
Rated Voltage	30V AC/DC
Operating Temperature	-55 to +85 °C*
Contact Resistance	Power Contact: 30mΩ Max. Signal Contact: 90mΩ Max.
Withstanding Voltage	100V AC for 1 min.
Insulation Resistance	50MΩ Min. (100V DC)
Mating Durability	10 times

\*Includes the temperature rise by current flow.  
- Variations: 32, 40pos.

Sep. 1. 2020 Copyright 2020 HIROSE ELECTRIC CO., LTD. All Rights Reserved.