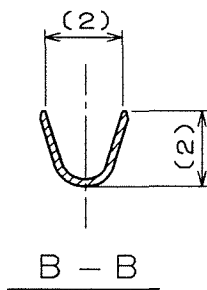
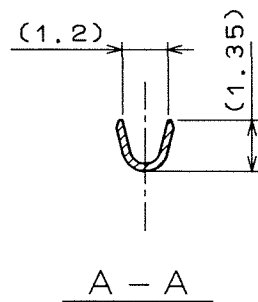
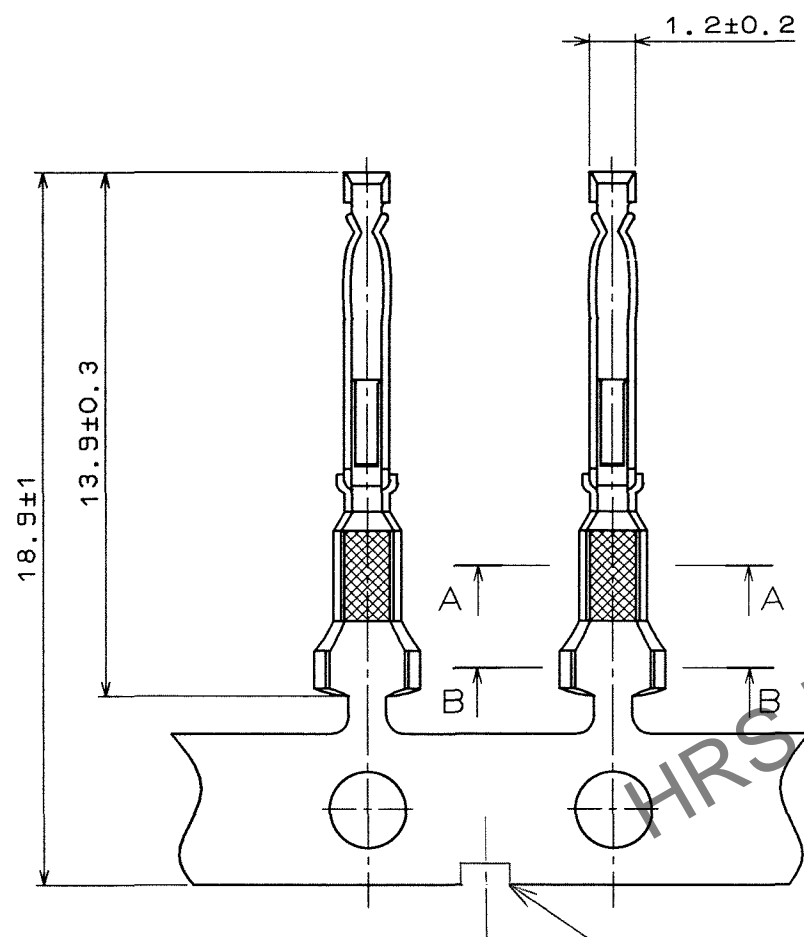
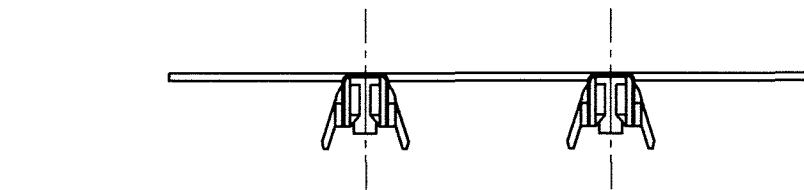


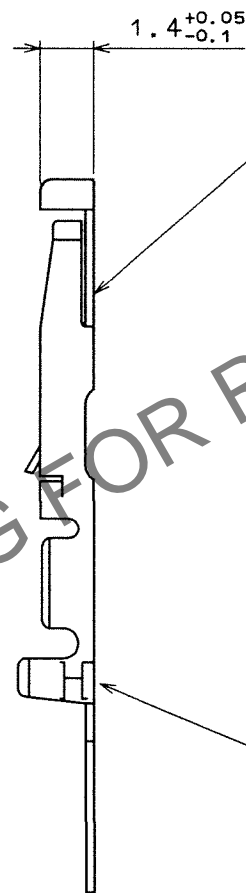
Mar.1.2024 Copyright 2024 HIROSE ELECTRIC CO., LTD. All Rights Reserved.
In case of consideration for using Automotive equipment / device which demand high reliability, kindly contact our sales window correspondents.

TO
R

A
B
C
D
E
F

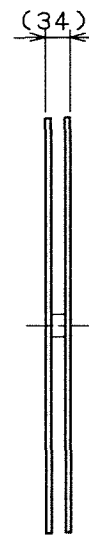
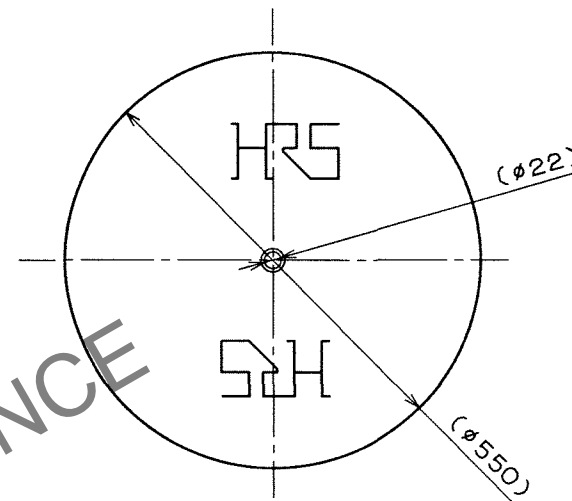


(REVISED CONFIGURATION)



HRS STAMPING

(2) REEL (10:1)



- NOTE 1 APPLICABLE WIRE : AWG#24~28.
2 CRIMPING CONDITION AS CRIMP HEIGHT IS SPECIFIED INDIVIDUALLY DEPENDING ON WIRE USED.

1	PHOSPHOR BRONZE	SILVER PLATING (N=10000)	2	CARTON	(REEL)
NO.	MATERIAL	FINISH, REMARKS	NO.	MATERIAL	FINISH, REMARKS
CODE NO. (OLD)			DRAWN	DESIGNED	CHECKED
			H. Kawaguchi	H. Kishi	M. Goshida
			96.8.24	96.8.24	96.8.29
DRAWING NO. EDC3-009287			PART NO. RP13A-SC-222		
UNITS mm			CODE NO. CL113-0151-0		
HRS HIROSE ELECTRIC CO., LTD.			1/1		