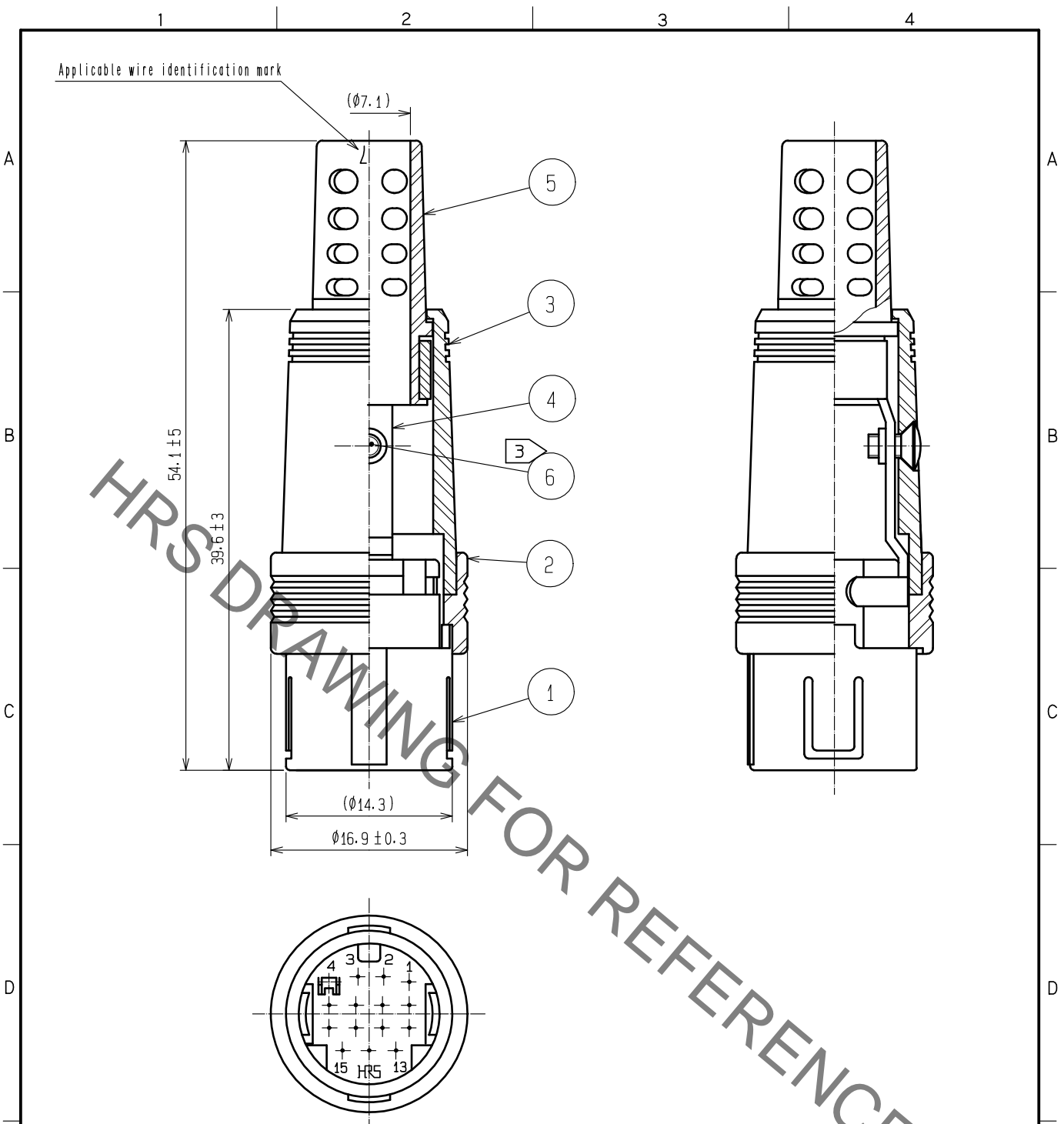


Oct.1.2019 Copyright 2019 HIROSE ELECTRIC CO., LTD. All Rights Reserved.  
In case of consideration for using Automotive equipment / device which demand high reliability, kindly contact our sales window correspondents.



- Notes
- 1 Applicable crimping contact : RP13-PC-222(CL113-0141-7)  
(Applicable wire : AWG #24 to #30)
  - 2 Applicable crimp contact crimping tool : RP13A-TC-01(CL150-0070-0)  
Applicable crimp contact extraction tool : RP13-PC-TPCCL150-0021-5)
  - 3 The recommended tightening torque of Ref.No. ⑥ shell be 0.2N · m.
  - 4 This product is delivered disassemble.
  - 5 The cable pull and twisting strength and other characteristics may differ.  
Depending on the cable structure, please confirm before the use.

3	Polycarbonate	(Black)	UL94V-0	6	Brass	Black chromate treatment(Trivalent chromium) JIS B1111 M2×0.4×4
2	Polycarbonate	(Black)	UL94V-0	5	Flexible polyvinylchloride	(Black)
1	Polycarbonate	(Black)	UL94V-0	4	Brass	
NO.	MATERIAL	FINISH	REMARKS	NO.	MATERIAL	FINISH . REMARKS

UNITS mm		SCALE 2 : 1	COUNT 1	DESCRIPTION OF REVISIONS DIS-C-00001211	DESIGNED MM. ISHII	CHECKED EJ. KUNII	DATE 16.10.17
-------------	--	----------------	------------	--	-----------------------	----------------------	------------------

<b>HRS</b> HIROSE ELECTRIC CO., LTD.	APPROVED : EJ. KUNII	16.05.31	DRAWING NO.	EDC-023501-71-00	
	CHECKED : EJ. KUNII	16.05.31	PART NO.	RP13A-12JK-15PC(71)	
	DESIGNED : MM. ISHII	16.05.31	CODE NO.	CL113-0218-0-71	1/1
	DRAWN : MM. ISHII	16.05.31			