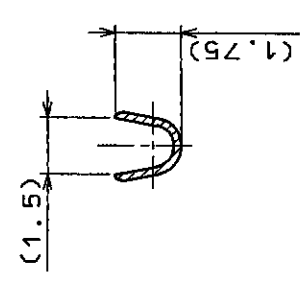
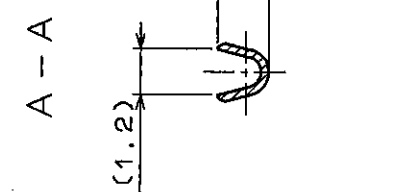
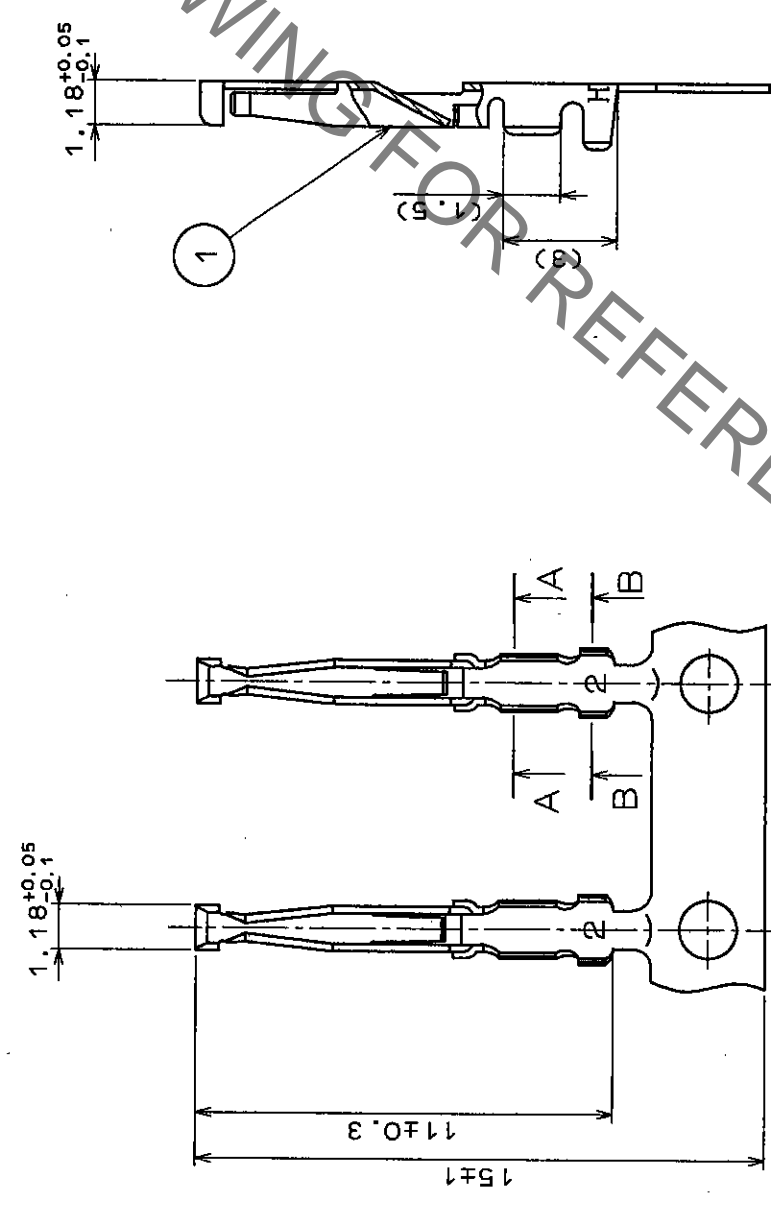
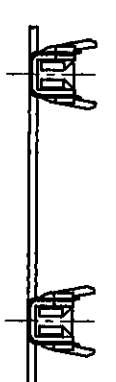
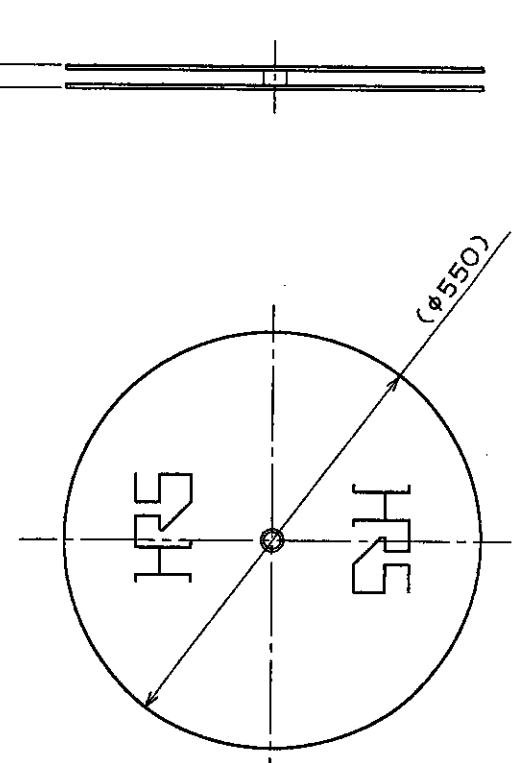


COUNT DESCRIPTION OF REVISIONS	BY	CHKD	DATE	COUNT DESCRIPTION OF REVISIONS	BY	CHKD	DATE

② REEL (10:1)



NOTE 1 APPLICABLE WIRE  
 : AWG#24~30(INSULATION DIA 1.15 MAX).  
 2 CRIMPING CONDITION AS CRIMP HEIGHT IS SPECIFIED INDIVIDUALLY DEPENDING ON WIRE USED.

1	PHOSPHOR BRONZE	SILVER PLATING(N=10000)	2	CARTON	(REEL)
NO.	MATERIAL	FINISH . REMARKS	NO.	MATERIAL	FINISH . REMARKS
CODE NO. (OLD)	DRAWN		DESIGNED	CHECKED	APPROVED
	H. Kawaguchi		H. Kishi		M. Ogasawara
	96.8.22		96.8.23		96.8.29
DRAWING NO. EDC3-021032			PART NO. RP19-SC-222		
SCALE 5:1			CODE NO. CL113-0266-2		
UNITS mm			FORM NO. 229/R		

TO	
R	