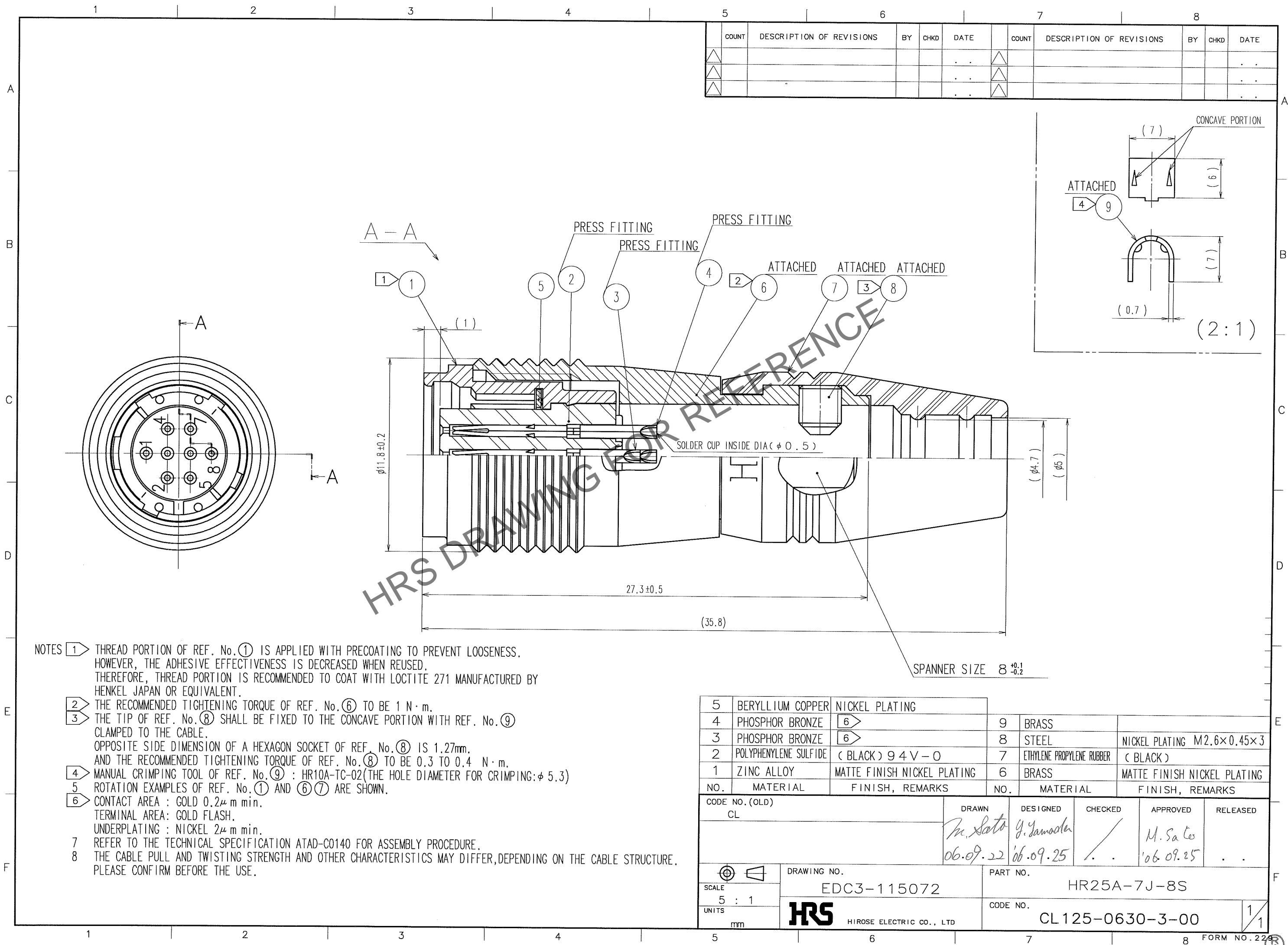


Apr.1.2024 Copyright 2024 HIROSE ELECTRIC CO., LTD. All Rights Reserved.
In case of consideration for using Automotive equipment / device which demand high reliability, kindly contact our sales window correspondents.



- NOTES
- 1 THREAD PORTION OF REF. No. 1 IS APPLIED WITH PRECOATING TO PREVENT LOOSENESS. HOWEVER, THE ADHESIVE EFFECTIVENESS IS DECREASED WHEN REUSED. THEREFORE, THREAD PORTION IS RECOMMENDED TO COAT WITH LOCTITE 271 MANUFACTURED BY HENKEL JAPAN OR EQUIVALENT.
 - 2 THE RECOMMENDED TIGHTENING TORQUE OF REF. No. 6 TO BE 1 N·m.
 - 3 THE TIP OF REF. No. 8 SHALL BE FIXED TO THE CONCAVE PORTION WITH REF. No. 9 CLAMPED TO THE CABLE. OPPOSITE SIDE DIMENSION OF A HEXAGON SOCKET OF REF. No. 8 IS 1.27mm. AND THE RECOMMENDED TIGHTENING TORQUE OF REF. No. 8 TO BE 0.3 TO 0.4 N·m.
 - 4 MANUAL CRIMPING TOOL OF REF. No. 9 : HR10A-TC-02 (THE HOLE DIAMETER FOR CRIMPING: φ 5.3)
 - 5 ROTATION EXAMPLES OF REF. No. 1 AND 6 7 ARE SHOWN.
 - 6 CONTACT AREA : GOLD 0.2 μm min. TERMINAL AREA: GOLD FLASH. UNDERPLATING : NICKEL 2 μm min.
 - 7 REFER TO THE TECHNICAL SPECIFICATION ATAD-C0140 FOR ASSEMBLY PROCEDURE.
 - 8 THE CABLE PULL AND TWISTING STRENGTH AND OTHER CHARACTERISTICS MAY DIFFER, DEPENDING ON THE CABLE STRUCTURE. PLEASE CONFIRM BEFORE THE USE.

COUNT					DESCRIPTION OF REVISIONS					BY					DATE				
△										△									
△										△									
△										△									

5	BERYLLIUM COPPER	NICKEL PLATING			
4	PHOSPHOR BRONZE	6	9	BRASS	
3	PHOSPHOR BRONZE	6	8	STEEL	NICKEL PLATING M2.6×0.45×3
2	POLYPHENYLENE SULFIDE	(BLACK) 9 4 V - O	7	ETHYLENE PROPYLENE RUBBER	(BLACK)
1	ZINC ALLOY	MATTE FINISH NICKEL PLATING	6	BRASS	MATTE FINISH NICKEL PLATING
NO.	MATERIAL	FINISH, REMARKS	NO.	MATERIAL	FINISH, REMARKS
CODE NO. (OLD)			DRAWN		
CL			DESIGNED		
			CHECKED		
			APPROVED		
			RELEASED		
			M. Sato		
			06.09.22		
			06.09.25		
			/		
			M. Sato		
			06.09.25		
			.		
			.		
DRAWING NO.			PART NO.		
EDC3-115072			HR25A-7J-8S		
SCALE			CODE NO.		
5 : 1			CL125-0630-3-00		
UNITS			1		
mm			1		
HRS			HIROSE ELECTRIC CO., LTD		

TO
R