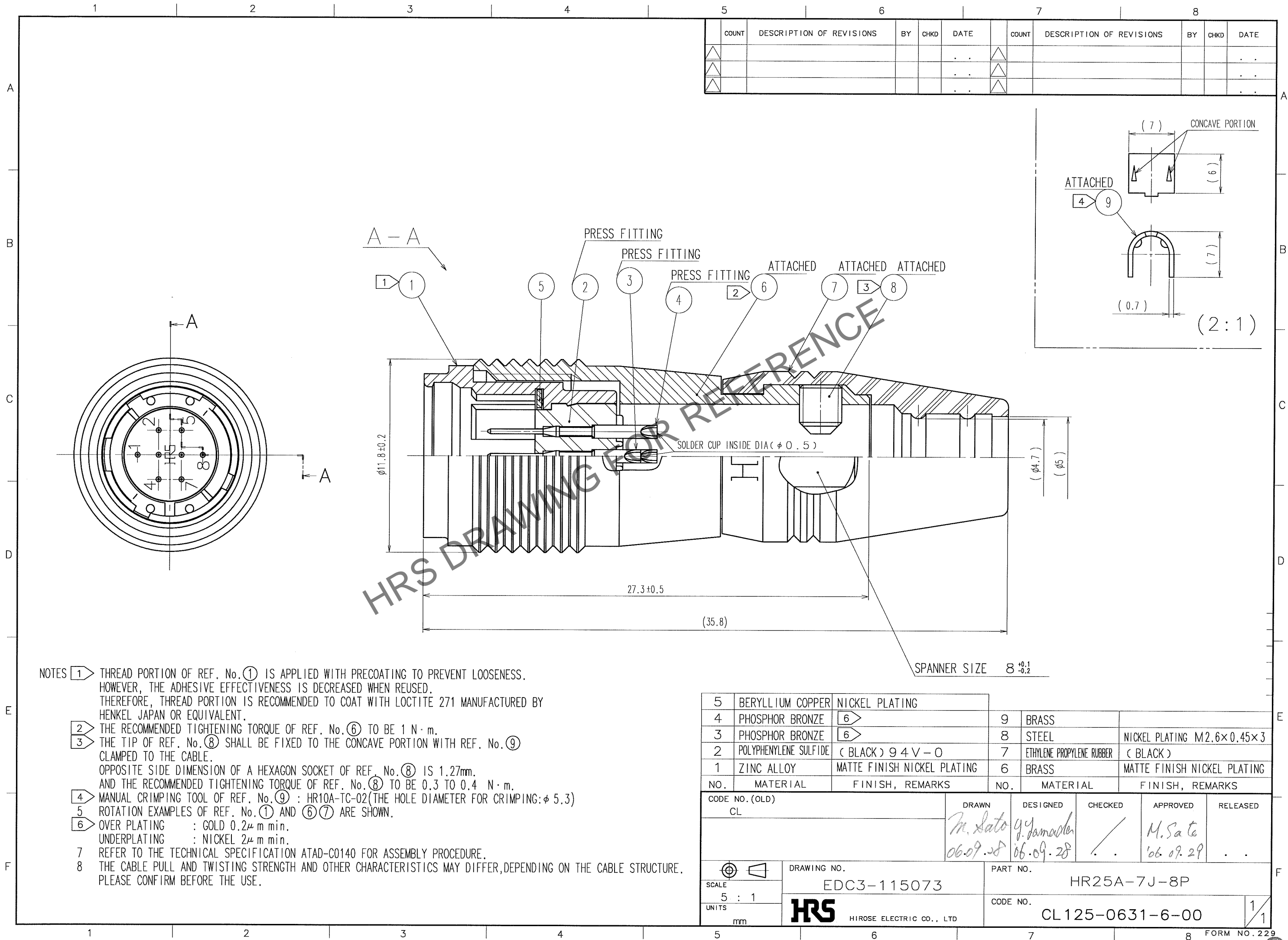


Mar.1.2024 Copyright 2024 HIROSE ELECTRIC CO., LTD. All Rights Reserved.
In case of consideration for using Automotive equipment / device which demand high reliability, kindly contact our sales window correspondents.



- NOTES
- 1. THREAD PORTION OF REF. No. ① IS APPLIED WITH PRECOATING TO PREVENT LOOSENESS. HOWEVER, THE ADHESIVE EFFECTIVENESS IS DECREASED WHEN REUSED. THEREFORE, THREAD PORTION IS RECOMMENDED TO COAT WITH LOCTITE 271 MANUFACTURED BY HENKEL JAPAN OR EQUIVALENT.
 - 2. THE RECOMMENDED TIGHTENING TORQUE OF REF. No. ⑥ TO BE 1 N·m.
 - 3. THE TIP OF REF. No. ⑧ SHALL BE FIXED TO THE CONCAVE PORTION WITH REF. No. ⑨ CLAMPED TO THE CABLE. OPPOSITE SIDE DIMENSION OF A HEXAGON SOCKET OF REF. No. ⑧ IS 1.27mm. AND THE RECOMMENDED TIGHTENING TORQUE OF REF. No. ⑧ TO BE 0.3 TO 0.4 N·m.
 - 4. MANUAL CRIMPING TOOL OF REF. No. ⑨ : HR10A-TC-02 (THE HOLE DIAMETER FOR CRIMPING: φ 5.3)
 - 5. ROTATION EXAMPLES OF REF. No. ① AND ⑥⑦ ARE SHOWN.
 - 6. OVER PLATING : GOLD 0.2μm min.
UNDERPLATING : NICKEL 2μm min.
 - 7. REFER TO THE TECHNICAL SPECIFICATION ATAD-C0140 FOR ASSEMBLY PROCEDURE.
 - 8. THE CABLE PULL AND TWISTING STRENGTH AND OTHER CHARACTERISTICS MAY DIFFER, DEPENDING ON THE CABLE STRUCTURE. PLEASE CONFIRM BEFORE THE USE.

| | | | | | |
|----------------------------|-----------------------|-----------------------------|---------------------------------|--------------------------------------|-----------------------------|
| 5 | BERYLLIUM COPPER | NICKEL PLATING | 9 | BRASS | |
| 4 | PHOSPHOR BRONZE | ⑥ | 8 | STEEL | NICKEL PLATING M2.6×0.45×3 |
| 3 | PHOSPHOR BRONZE | ⑥ | 7 | ETHYLENE PROPYLENE RUBBER | (BLACK) |
| 2 | POLYPHENYLENE SULFIDE | (BLACK) 94V-0 | 6 | BRASS | MATTE FINISH NICKEL PLATING |
| 1 | ZINC ALLOY | MATTE FINISH NICKEL PLATING | | | |
| NO. | MATERIAL | FINISH, REMARKS | NO. | MATERIAL | FINISH, REMARKS |
| CODE NO. (OLD) CL | | | DRAWN M. Sato 06.09.28 | DESIGNED Y. Yamashita 06.09.28 | CHECKED / |
| | | | APPROVED M. Sato 06.09.29 | | |
| | | | RELEASED / | | |
| DRAWING NO. EDC3-115073 | | | PART NO. HR25A-7J-8P | | |
| SCALE 5 : 1 | | | CODE NO. CL125-0631-6-00 | | |
| UNITS mm | | | 1/1 | | |
| HRS | | | | | |
| HIROSE ELECTRIC CO., LTD | | | | | |