

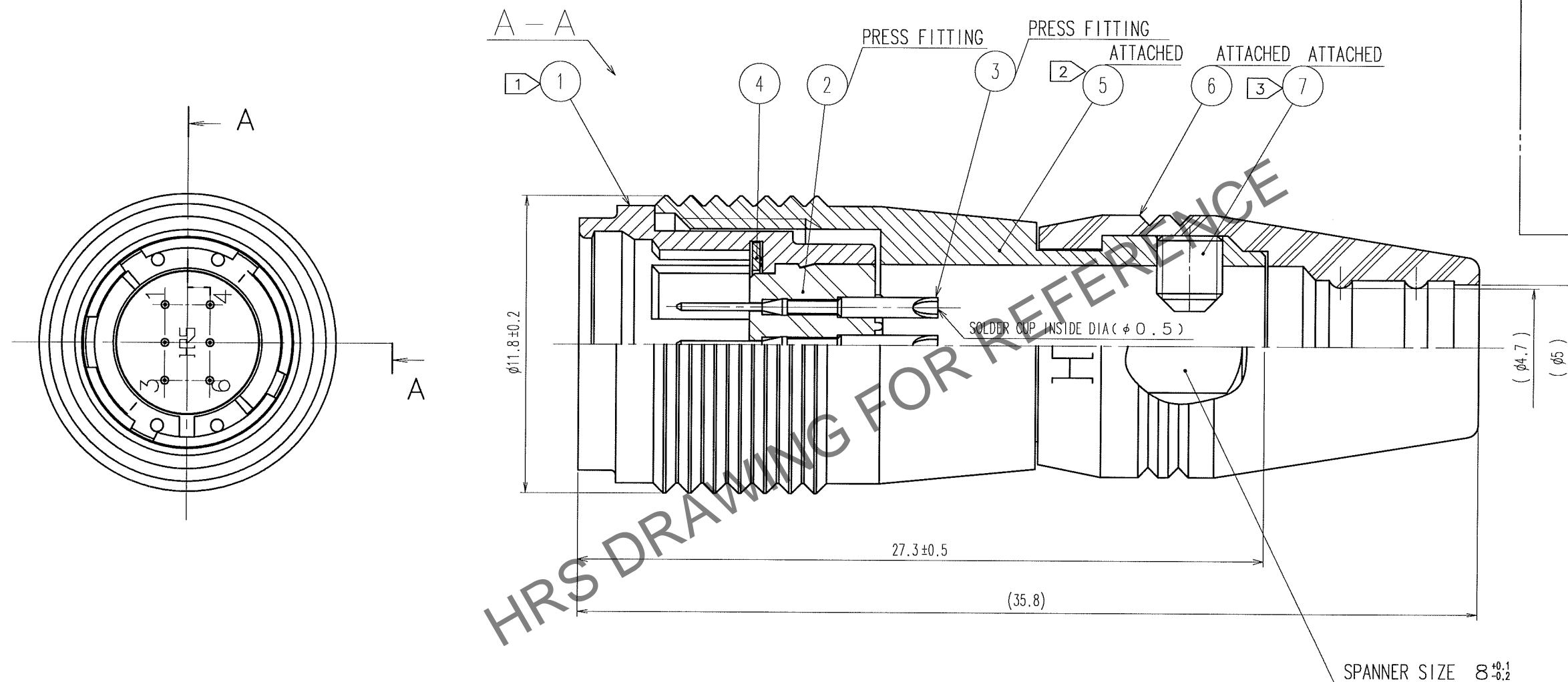
Apr.1.2024 Copyright 2024 HIROSE ELECTRIC CO., LTD. All Rights Reserved.  
In case of consideration for using Automotive equipment / device which demand high reliability, kindly contact our sales window correspondents.

A  
B  
C  
D  
E  
F

1 2 3 4 5 6 7 8

COUNT	DESCRIPTION OF REVISIONS	BY	CHKD	DATE	COUNT	DESCRIPTION OF REVISIONS	BY	CHKD	DATE
△				..	△				..
△				..	△				..
△				..	△				..

A  
B  
C  
D  
E  
F



- NOTES
- ① THREAD PORTION OF REF. No. ① IS APPLIED WITH PRECOATING TO PREVENT LOOSENESS. HOWEVER, THE ADHESIVE EFFECTIVENESS IS DECREASED WHEN REUSED. THEREFORE, THREAD PORTION IS RECOMMENDED TO COAT WITH LOCTITE 271 MANUFACTURED BY HENKEL JAPAN OR EQUIVALENT.
  - ② THE RECOMMENDED TIGHTENING TORQUE OF REF. No. ⑤ TO BE 1 N·m.
  - ③ THE TIP OF REF. No. ⑦ SHALL BE FIXED TO THE CONCAVE PORTION WITH REF. No. ⑧ CLAMPED TO THE CABLE. OPPOSITE SIDE DIMENSION OF A HEXAGON SOCKET OF REF. No. ⑦ IS 1.27mm. AND THE RECOMMENDED TIGHTENING TORQUE OF REF. No. ⑦ TO BE 0.3 TO 0.4 N·m.
  - ④ MANUAL CRIMPING TOOL OF REF. No. ⑧ : HR10A-TC-02 (THE HOLE DIAMETER FOR CRIMPING: φ 5.3)
  - ⑤ ROTATION EXAMPLES OF REF. No. ① AND ⑤⑥ ARE SHOWN.
  - ⑥ OVER PLATING : GOLD 0.2μm min.  
UNDERPLATING : NICKEL 2μm min.
  - ⑦ REFER TO THE TECHNICAL SPECIFICATION ATAD-C0140 FOR ASSEMBLY PROCEDURE.
  - ⑧ THE CABLE PULL AND TWISTING STRENGTH AND OTHER CHARACTERISTICS MAY DIFFER, DEPENDING ON THE CABLE STRUCTURE. PLEASE CONFIRM BEFORE THE USE.

4	BERYLLIUM COPPER	NICKEL PLATING	8	BRASS	
3	PHOSPHOR BRONZE	⑥	7	STEEL	NICKEL PLATING M2.6×0.45×3
2	POLYPHENYLENE SULFIDE	(BLACK) 94V-0	6	ETHYLENE PROPYLENE RUBBER	(BLACK)
1	ZINC ALLOY	MATTE FINISH NICKEL PLATING	5	BRASS	MATTE FINISH NICKEL PLATING
NO.	MATERIAL	FINISH, REMARKS	NO.	MATERIAL	FINISH, REMARKS
CODE NO. (OLD) CL		DRAWN <i>M. Sato</i> 06.09.28	DESIGNED <i>Y. Yamada</i> 06.09.28	CHECKED <i>/</i>	APPROVED <i>M. Sato</i> 06.09.29
DRAWING NO. EDC3-115075		PART NO. HR25A-7J-6P		CODE NO. CL125-0633-1-00	
SCALE 5 : 1		HRS HIROSE ELECTRIC CO., LTD		1/1	
UNITS mm					

F