

Jul.1.2020 Copyright 2020 HIROSE ELECTRIC CO., LTD. All Rights Reserved.
 In case of consideration for using Automotive equipment / device which demand high reliability, kindly contact our sales window correspondents.

Fig.2(1:1)

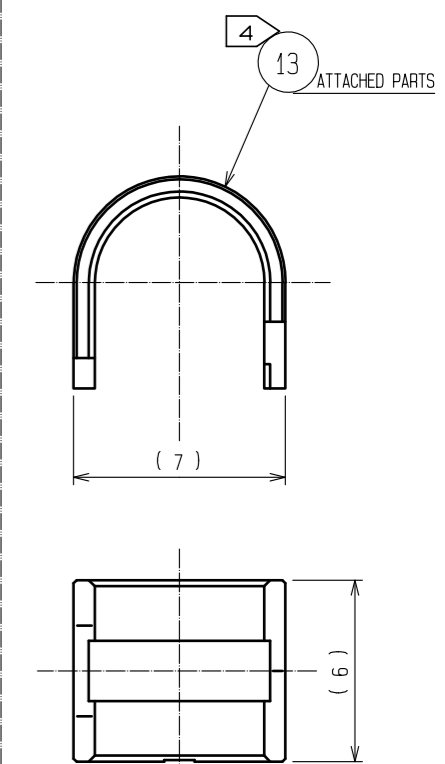
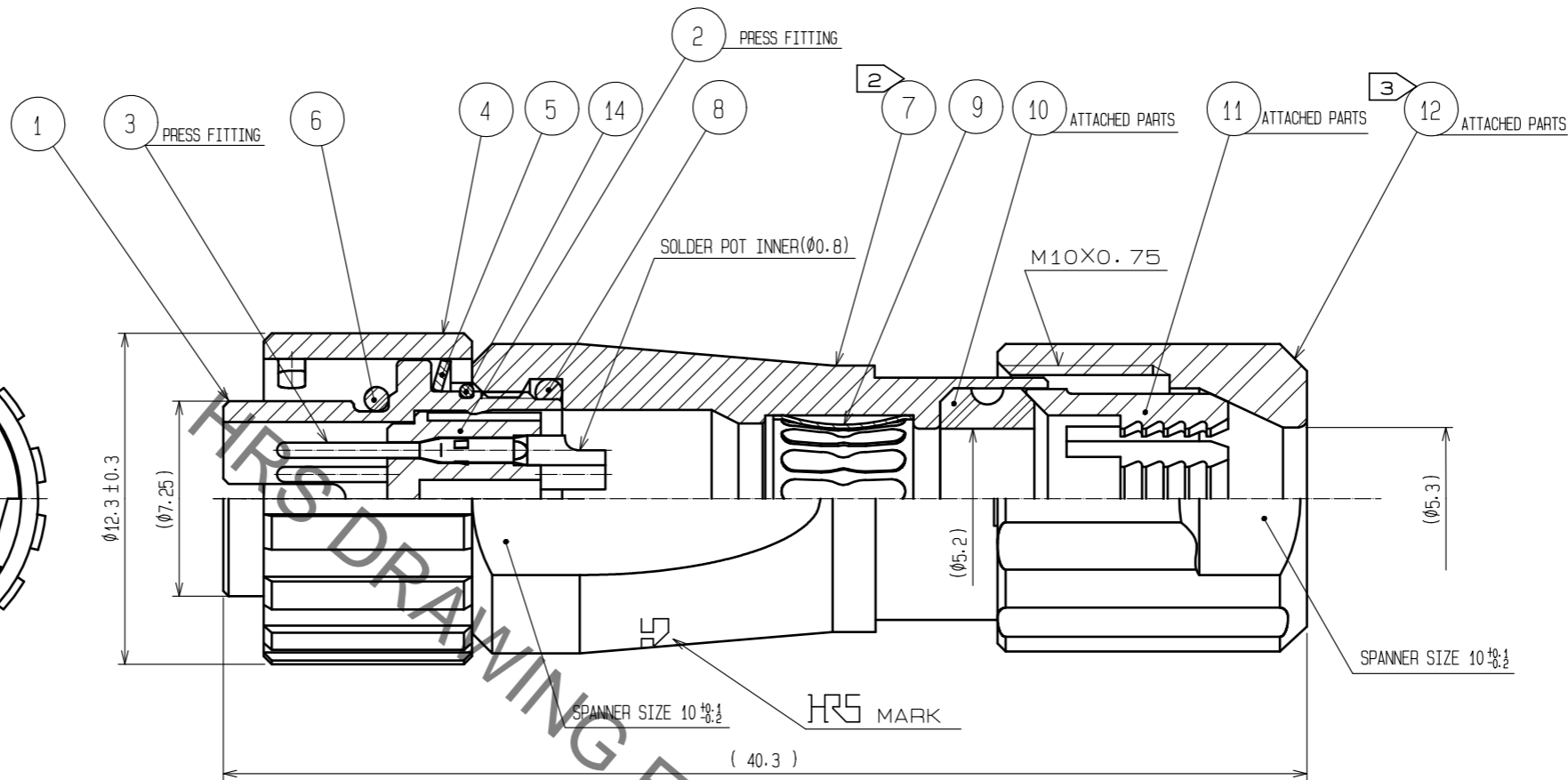
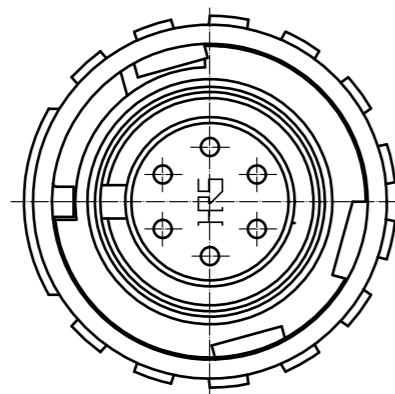
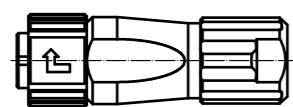
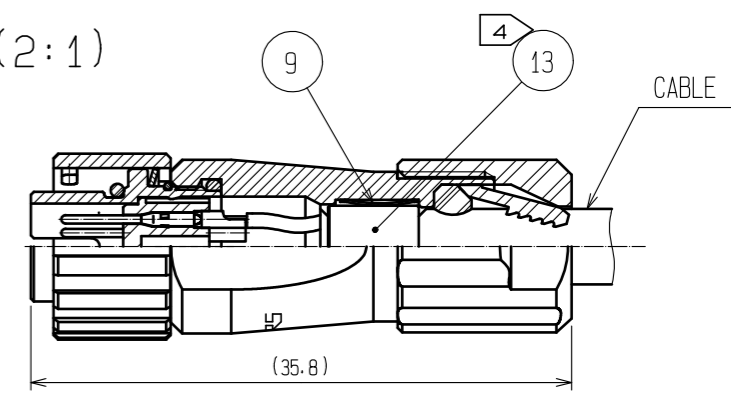


Fig.1(2:1)



- NOTES
- ① PLATING(REF.NO.③)
 CONTACT AREA : GOLD 0.2µm min
 OTHERS : GOLD AND NICKEL
 UNDER PLATING : NICKEL 2µm min
 - ② THE RECOMMENDED CLAMP TORQUE OF REF.NO.⑦ TO BE 1 TO 1.5N·m.
 THREAD LOCKER TO THE THREADED PORTION OF REF.NO.① IS RECOMMENDED TO PREVENT REF.NO.⑦ FROM LOOSING.
 RECOMMENDED THREAD LOCKER:LOCTITE 263, HENKEL JAPAN LTD.
 - ③ THE RECOMMENDED CLAMP TORQUE OF REF.NO.⑫ TO BE 0.8 TO 1N·m.
 THREAD LOCKER AND LOCK PRIMER TO THE THREADED PORTION M10X0.75 OF REF.NO.⑦ IS RECOMMENDED TO PREVENT REF.NO.⑫ FROM LOOSING.
 RECOMMENDED THREAD LOCKER AND LOCK PRIMER : LOCTITE 263, LOCK PRIMER 7649, HENKEL JAPAN LTD.
 - ④ FASTEN REF.NO.⑬ TO THE CABLE WITH THE CABLE CRIMPING TOOL.
 AND MAKE REF.NO.⑬ CONTACT WITH REF.NO.⑨ (REFER TO Fig.1).
 REFER TO THE TECHNICAL SPECIFICATION ETAD-C0099 FOR DETAILS.
 APPLICABLE CABLE CRIMPING TOOL : HR10A-TC-02(CL150-0041-2)(THE HOLE DIAMETER FOR CRIMPING:Ø5.3)
 - ⑤ Fig.2 SHOWS THE APPEARANCE AFTER ASSEMBLY.
 - ⑥ APPLICABLE CABLE ASSEMBLY FIXTURE : LF07BP-T01(CL150-0232-0)
 CABLE ASSEMBLY FIXTURE IS USED AS A RECEPTACLE STAND OF EXTRACT
 AND THE PART No.① OF AN ASSEMBLY.
 - ⑦ ROTATION EXAMPLES OF No.④, ⑦ AND ⑫ TO ① ARE SHOWN.

| NO. | MATERIAL | FINISH . REMARKS | NO. | MATERIAL | FINISH . REMARKS |
|-----|--------------------|------------------|-----|--------------------|--------------------------------|
| 7 | ZINC ALLOY | NICKEL PLATING | 14 | STAINLESS STEEL | |
| 6 | CHLOROPRENE RUBBER | (BLACK) | 13 | BRASS | NICKEL PLATING |
| 5 | STAINLESS STEEL | | 12 | PPS | (NATURAL, BROWN) UL94V-0 |
| 4 | ZINC ALLOY | NICKEL PLATING | 11 | POLYAMIDE | (NATURAL, MILKY WHITE) UL94V-0 |
| 3 | COPPER ALLOY | ① | 10 | CHLOROPRENE RUBBER | (BLACK) |
| 2 | PPS | (BLACK) UL94V-0 | 9 | PHOSPHOR BRONZE | NICKEL PLATING |
| 1 | ZINC ALLOY | NICKEL PLATING | 8 | CHLOROPRENE RUBBER | (BLACK) |

| UNITS | SCALE | COUNT | DESCRIPTION OF REVISIONS | DESIGNED | CHECKED | DATE |
|-------|-------|-------|-----------------------------------|----------|---------|------|
| mm | 4 : 1 | △ | APPROVED : HY. KOBAYASHI 18.02.22 | | | |
| | | | CHECKED : HY. KOBAYASHI 18.02.22 | | | |
| | | | DESIGNED : TY. SUZUKI 18.02.22 | | | |
| | | | DRAWN : TY. SUZUKI 18.02.22 | | | |

| DRAWING NO. | PART NO. | CODE NO. |
|------------------|----------------|-----------------|
| EDC-113850-31-00 | LF07WBP-6P(31) | CL136-0002-4-31 |