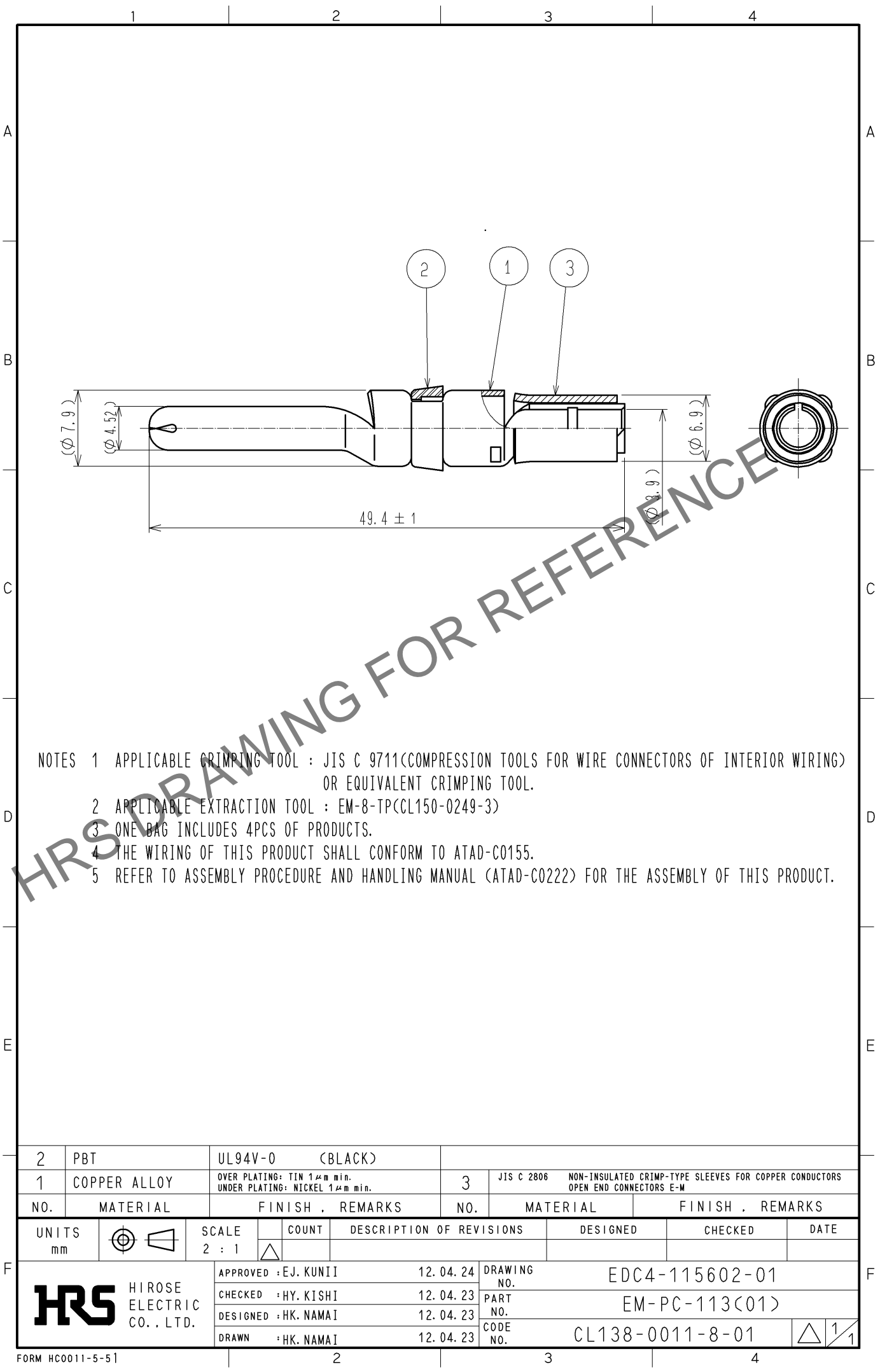


Apr.1.2024 Copyright 2024 HIROSE ELECTRIC CO., LTD. All Rights Reserved.
In case of consideration for using Automotive equipment / device which demand high reliability, kindly contact our sales window correspondents.



- NOTES 1 APPLICABLE CRIMPING TOOL : JIS C 9711(COMPRESSION TOOLS FOR WIRE CONNECTORS OF INTERIOR WIRING)
OR EQUIVALENT CRIMPING TOOL.
2 APPLICABLE EXTRACTION TOOL : EM-8-TP(CCL150-0249-3)
3 ONE BAG INCLUDES 4PCS OF PRODUCTS.
4 THE WIRING OF THIS PRODUCT SHALL CONFORM TO ATAD-C0155.
5 REFER TO ASSEMBLY PROCEDURE AND HANDLING MANUAL (ATAD-C0222) FOR THE ASSEMBLY OF THIS PRODUCT.

2	PBT	UL94V-0 (BLACK)					
1	COPPER ALLOY	OVER PLATING: TIN 1μm min. UNDER PLATING: NICKEL 1μm min.	3	JIS C 2806 NON-INSULATED CRIMP-TYPE SLEEVES FOR COPPER CONDUCTORS OPEN END CONNECTORS E-M			
NO.	MATERIAL	FINISH , REMARKS	NO.	MATERIAL	FINISH , REMARKS		
UNITS mm		SCALE 2 : 1	COUNT 	DESCRIPTION OF REVISIONS	DESIGNED	CHECKED	DATE
HIROSE ELECTRIC CO., LTD.		APPROVED : EJ. KUNII	12. 04. 24	DRAWING NO.	EDC4-115602-01		
		CHECKED : HY. KISHI	12. 04. 23	PART NO.	EM-PC-113(01)		
		DESIGNED : HK. NAMA I	12. 04. 23	CODE NO.	CL138-0011-8-01		
		DRAWN : HK. NAMA I	12. 04. 23		1/1		