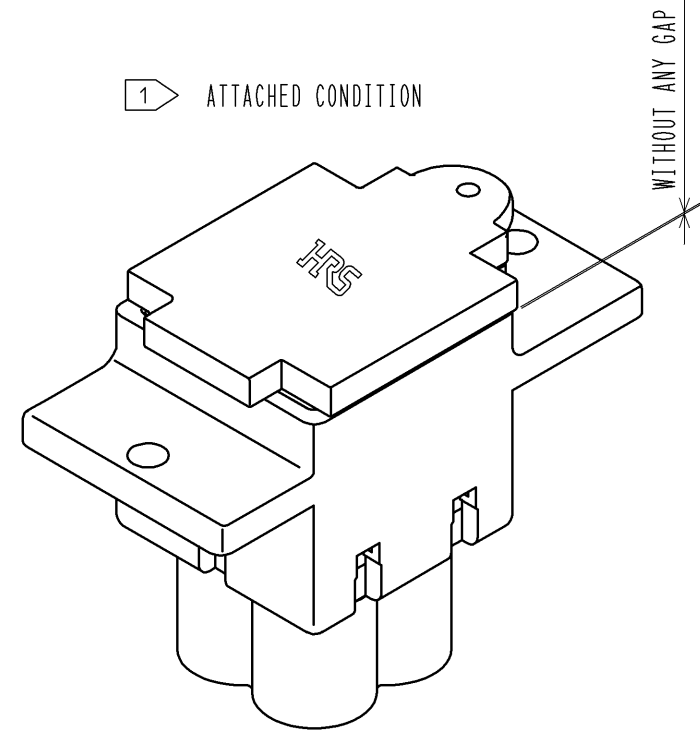
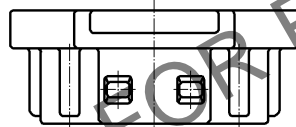
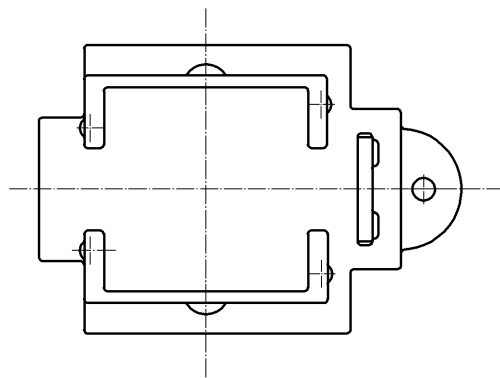
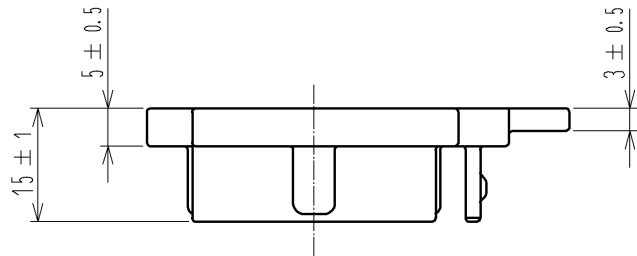
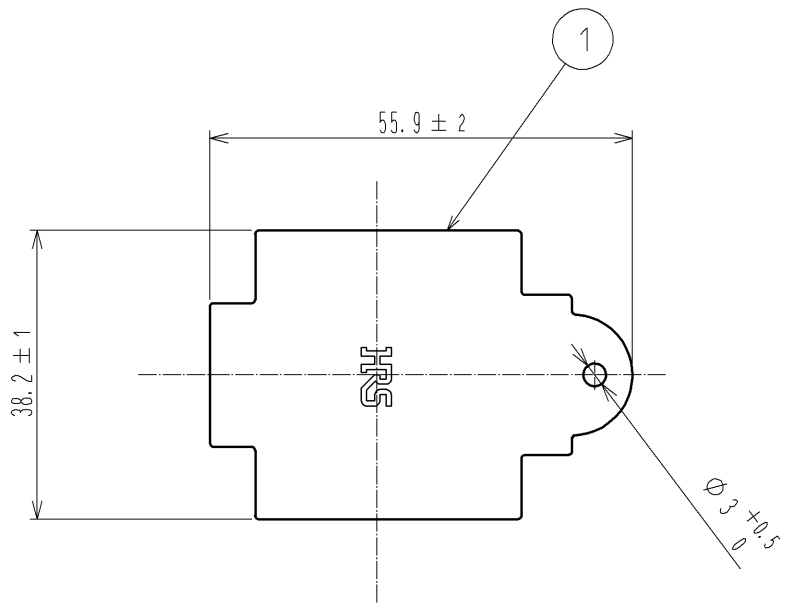


May.1.2024 Copyright 2024 HIROSE ELECTRIC CO., LTD. All Rights Reserved.
In case of consideration for using Automotive equipment / device which demand high reliability, kindly contact our sales window correspondents.



- NOTES 1 THIS PRODUCT SHALL BE FITTED TO THE CONNECTOR WITHOUT ANY GAP SUCH AS ATTACHED CONDITION.
2. THIS PRODUCT IS A CAP FOR EM35MR※-4※.
IT IS APPLICABLE REGARDLESS OF GIVEN ALPHABETS OR NUMBERS SHOWN AT ※.

1	CHLOROPRENE RUBBER	(BLACK)					
NO.	MATERIAL	FINISH . REMARKS	NO.	MATERIAL	FINISH . REMARKS		
UNITS mm		SCALE 1 : 1	COUNT 	DESCRIPTION OF REVISIONS		DESIGNED	CHECKED
HIROSE ELECTRIC CO., LTD.		APPROVED : EJ. KUNII	14. 02. 19	DRAWING NO.		EDC3-117874-00	
		CHECKED : HY. KISHI	14. 02. 19	PART NO.		EM35MR-C	
		DESIGNED : DS. MATSUNE	14. 02. 18	CODE NO.		CL138-0029-3-00	
		DRAWN : DS. MATSUNE	14. 02. 18				1