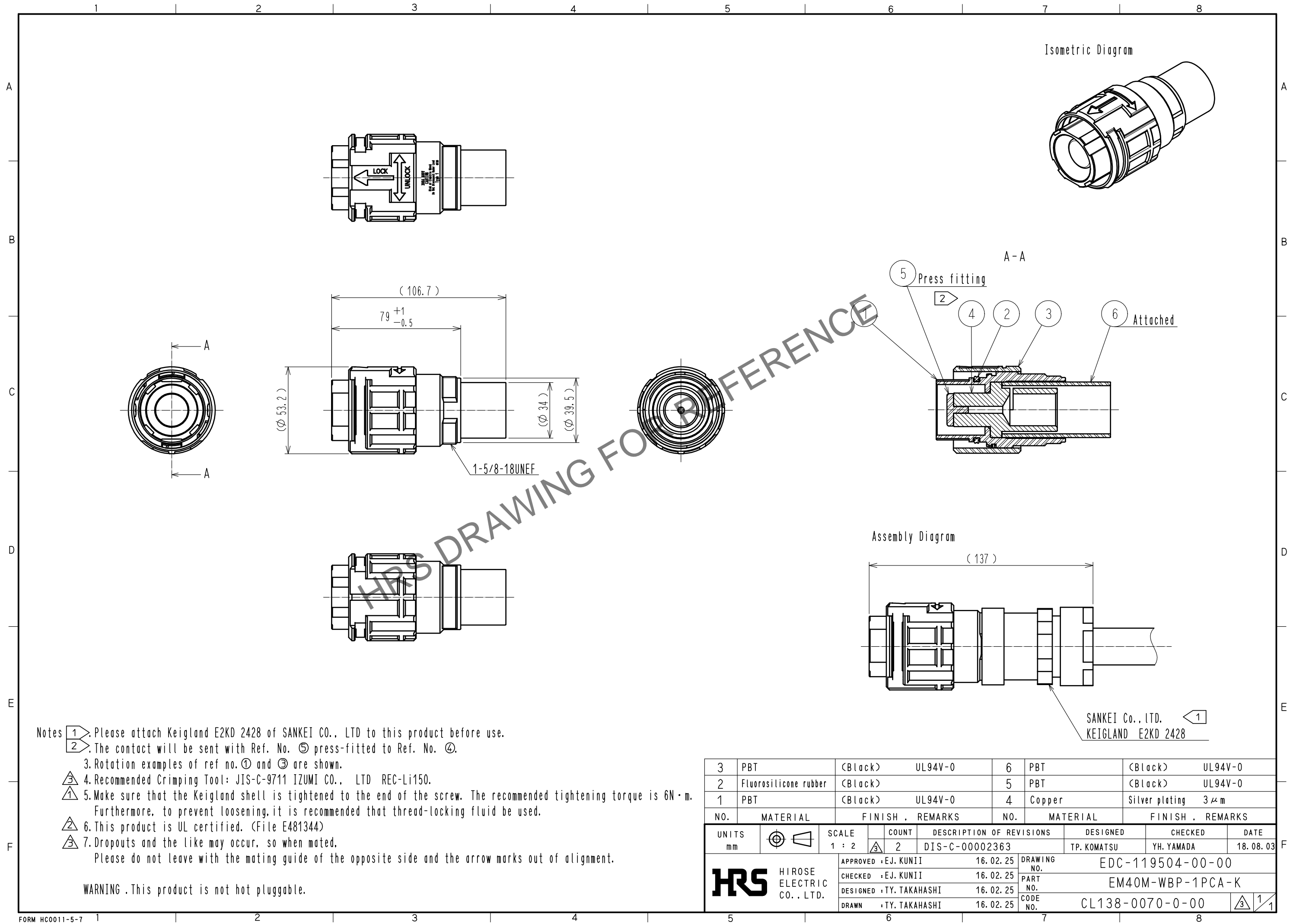


Apr.1.2024 Copyright 2024 HIROSE ELECTRIC CO., LTD. All Rights Reserved.
In case of consideration for using Automotive equipment / device which demand high reliability, kindly contact our sales window correspondents.



- Notes
- 1. Please attach Keigland E2KD 2428 of SANKEI CO., LTD to this product before use.
 - 2. The contact will be sent with Ref. No. ⑤ press-fitted to Ref. No. ④.
 - 3. Rotation examples of ref no. ① and ③ are shown.
 - 4. Recommended Crimping Tool: JIS-C-9711 IZUMI CO., LTD REC-Li150.
 - 5. Make sure that the Keigland shell is tightened to the end of the screw. The recommended tightening torque is 6N・m. Furthermore, to prevent loosening, it is recommended that thread-locking fluid be used.
 - 6. This product is UL certified. (File E481344)
 - 7. Dropouts and the like may occur, so when mated, Please do not leave with the mating guide of the opposite side and the arrow marks out of alignment.

WARNING .This product is not hot pluggable.

3	PBT	(Black)	UL94V-0	6	PBT	(Black)	UL94V-0
2	Fluorosilicone rubber	(Black)		5	PBT	(Black)	UL94V-0
1	PBT	(Black)	UL94V-0	4	Copper	Silver plating	3μm
NO.	MATERIAL	FINISH . REMARKS		NO.	MATERIAL	FINISH . REMARKS	
UNITS mm		SCALE 1 : 2	COUNT 2	DESCRIPTION OF REVISIONS DIS-C-00002363		DESIGNED TP. KOMATSU	CHECKED YH. YAMADA
HRS HIROSE ELECTRIC CO., LTD.		APPROVED : EJ. KUNII		16.02.25		DRAWING NO. EDC-119504-00-00	
		CHECKED : EJ. KUNII		16.02.25		PART NO. EM40M-WBP-1PCA-K	
		DESIGNED : TY. TAKAHASHI		16.02.25		CODE NO. CL138-0070-0-00	
		DRAWN : TY. TAKAHASHI		16.02.25			