

Fig.1 THE STATE APPLICABLE CONTACT ASSEMBLED AND 3-STEP SEQUENTIAL STRUCTURE.

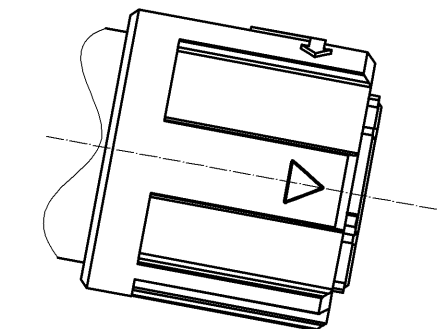
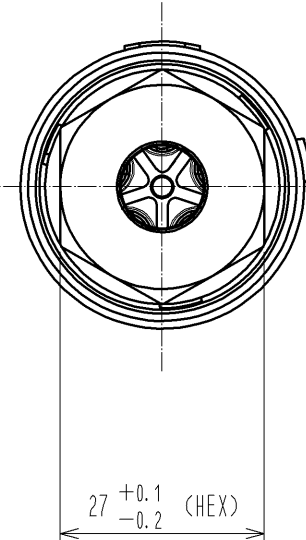
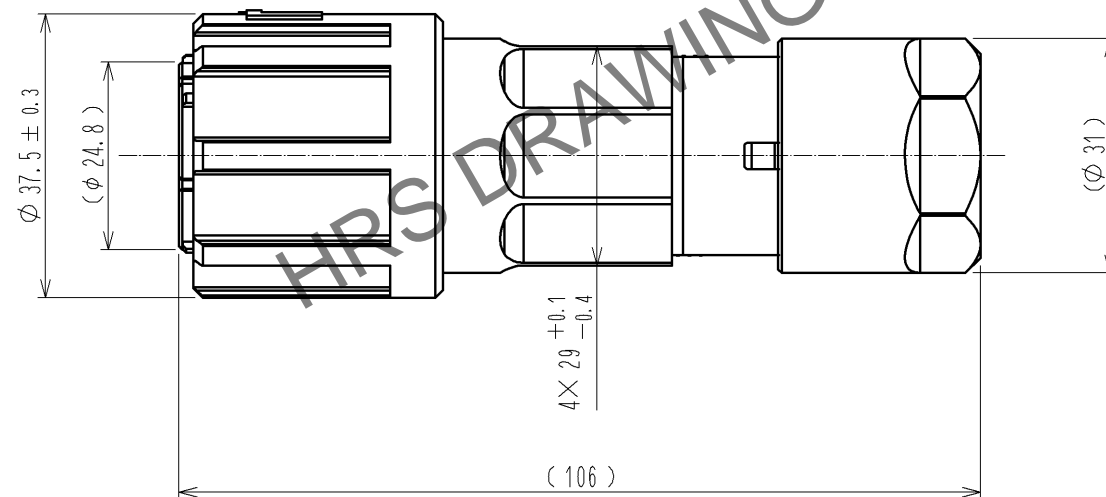
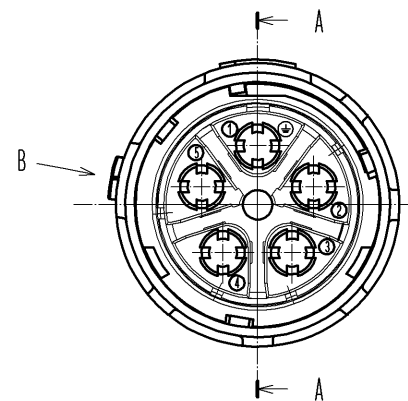
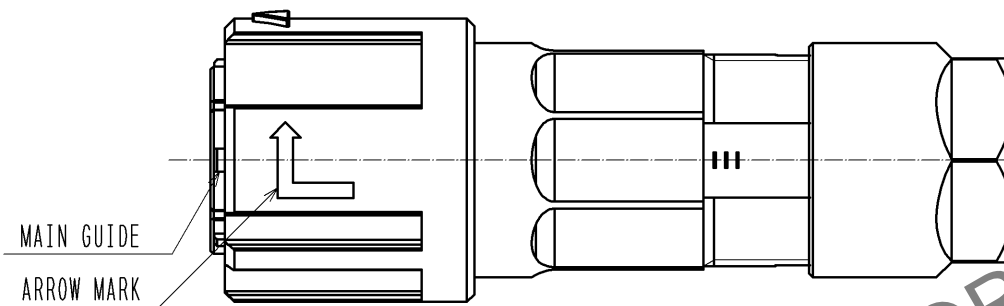
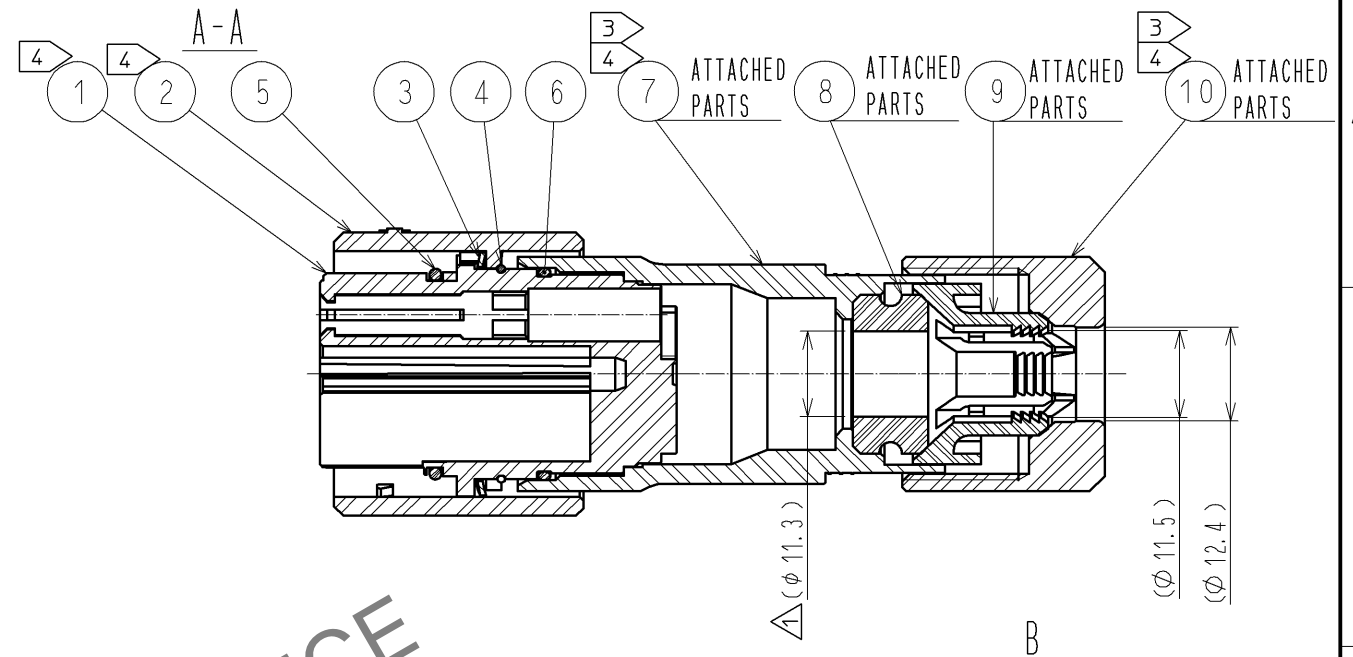
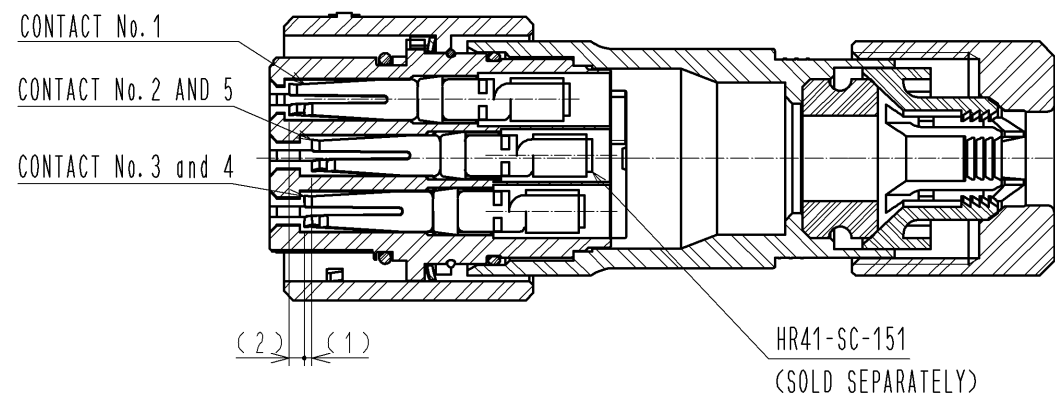
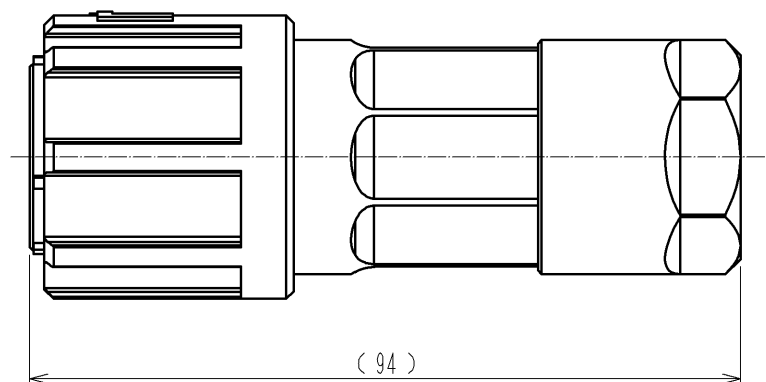


Fig. 2 AFTER ASSEMBLY



- NOTES
- Fig.1 SHOWS THE STATE APPLICABLE CONTACT ASSEMBLED AND 3-STEP SEQUENTIAL STRUCTURE.
  - APPLICABLE CRIMPING CONTACT : HR41-SC-151
  - APPLICABLE CRIMP CONTACT EXTRACTION TOOL : HR41-TP
  - The RECOMMENDED TIGHTENING TORQUE OF REF. NO. ⑦ AND ⑩ TO BE 5 TO 5.5 N·m  
THE ADHESIVE FOR PREVENTION OF LOOSENESS IS NOT NECESSARY IN THE FIRST TIME.  
LOCTITE 263, LOCPRIMER 7649, HENKEL JAPAN IS RECOMMENDED TO PREVENT REF NO. ⑦, ⑩ FROM LOOSING. AFTER THE SECOND TIME.
  - ROTATION EXAMPLES ARE SHOWN FOR REF.NO.①,②,⑦ AND ⑩.
  - Fig. 2 SHOWS THE APPEARANCE AFTER ASSEMBLY.
  - THE CABLE PULL FORCE, TWISTING STRENGTH, WATER TIGHTNESS AND OTHER CHARACTERISTICS MAY DIFFER. DEPENDING ON CABLE STRUCTURE.  
PLEASE CONFIRM BEFORE THE USE.
  - THE ASSEMBLY OF THIS PRODUCT APPLIES TO THE MANUAL ETAD-C0288.

5	SILICONE RUBBER	(LIGHT RED)	10	POLYAMIDE	(BLACK) UL94V-0
4	STAINLESS STEEL		9	POLYAMIDE	(CNC. WHITE) UL94V-0
3	STAINLESS STEEL		8	SILICONE RUBBER	(BLACK)
2	POLYAMIDE	(BLACK) UL94V-0	7	POLYAMIDE	(BLACK) UL94V-0
1	POLYBUTYLENE TEREPHTHALATE	(BLACK) UL94V-0	6	SILICONE RUBBER	(RED)
NO.	MATERIAL	FINISH . REMARKS	NO.	MATERIAL	FINISH . REMARKS
UNITS mm			SCALE 1 : 1		
			COUNT 3		
APPROVED : SU. OBARA			DESCRIPTION OF REVISIONS		
CHECKED : HY. KOBAYASHI			DESIGNED		
DESIGNED : TY. SUZUKI			CHECKED		
DRAWN : TY. SUZUKI			DATE		
HRS			DRAWING NO.		
HIROSE ELECTRIC CO., LTD.			EDC3-117698-00		
			PART NO.		
			HR41-25WBP-5SC		
			CODE NO.		
			CL141-0009-9-00		
			1/1		