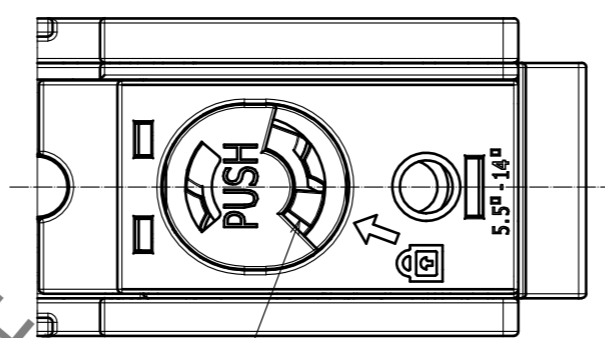


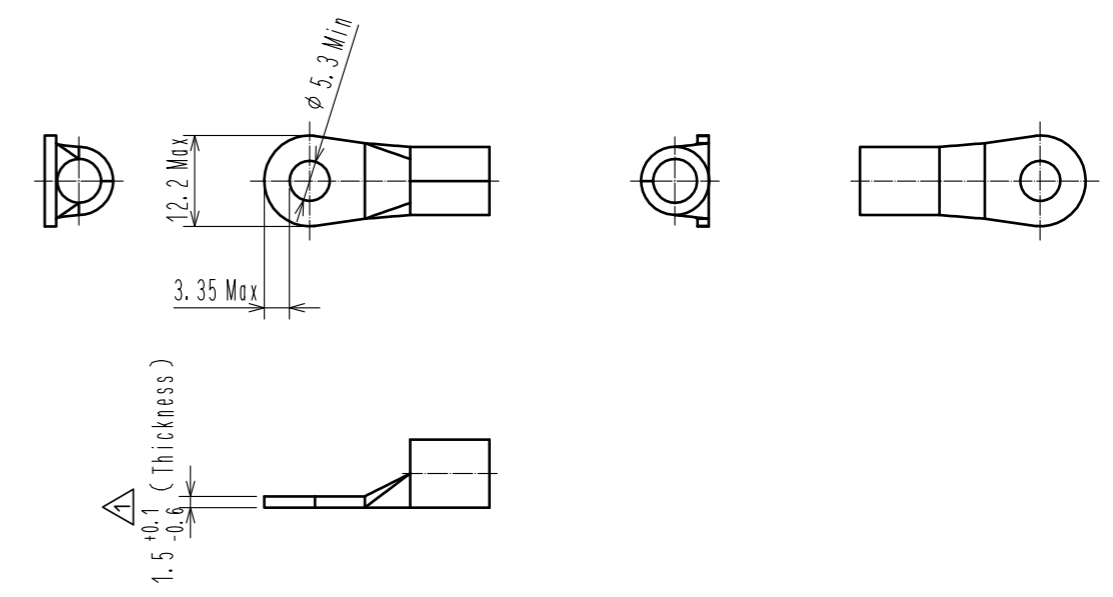
Apr.1.2019 Copyright 2019 HIROSE ELECTRIC CO., LTD. All Rights Reserved.
 In case of consideration for using Automotive equipment / device which demand high reliability, kindly contact our sales window correspondents.

A(Figure.1 Locked State External View)(2:1)

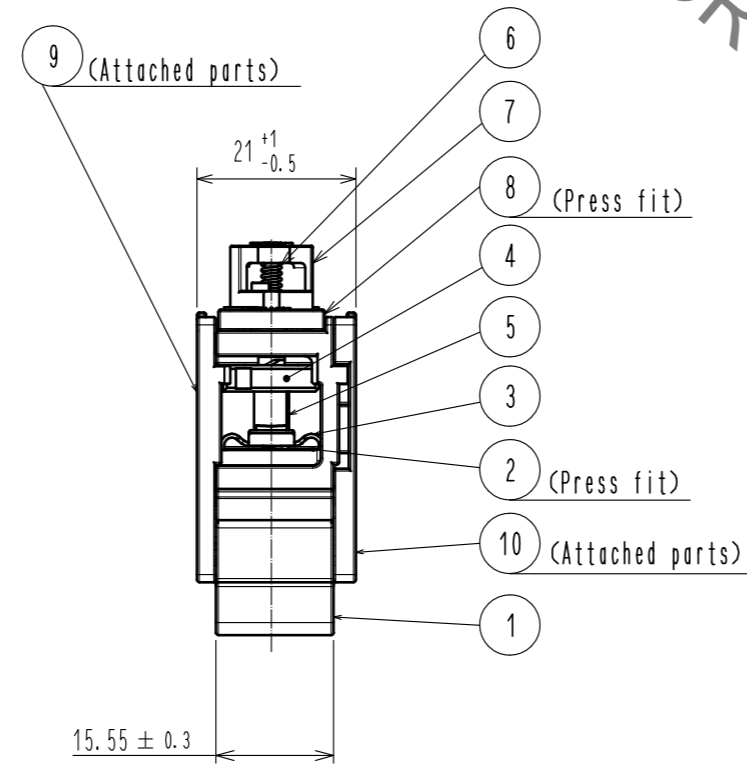
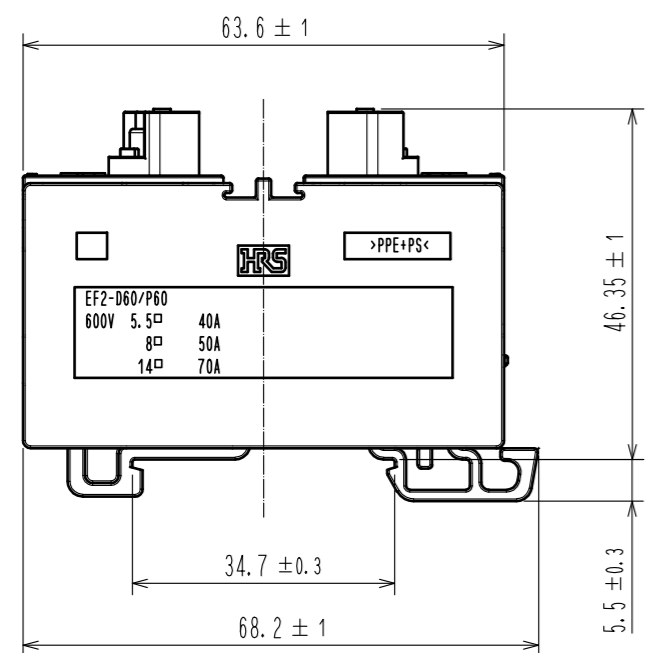
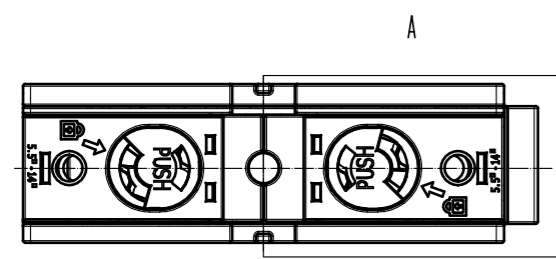


The protruding part shall be on the mark side.

Figure.2 Applicable Contact (Commercial item)(Free)



- Notes
- Applicable crimp contacts:
 NICHIFU CO.,LTD R5.5-5 or J.S.T.MFG.CO.,LTD R5.5-5 or a similar product.
 NICHIFU CO.,LTD R8-5 or J.S.T.MFG.CO.,LTD R8-5 or a similar product.
 NICHIFU CO.,LTD R14-5 or J.S.T.MFG.CO.,LTD R14-5 or a similar product.
 - Applicable crimping tool: JIS-C-9711 IZUMI CO.,LTD 214A or REC-Li60S.
 - Please assemble this product in coordination with the assembly manual ETAD-C0387-00.
 - When inserting the contact, please do so until Ref. No. ⑤ rotates back to its original position (shown in Figure.1 Locked State External View).
 Furthermore, lightly pull the cable to confirm that the contact is locked and mated.
 - Points to note before use:
 - Use only tin coated material.
 - Please check that dimensions satisfy those of Figure.2 and that there is no deformation, dirt etc., or abnormal contact resistance value.
 - Insertion and withdrawal forces, as well as contact resistance values could change due to the quality of the coating. Therefore, please evaluate beforehand.
 - Warning 6. This product is not hot pluggable.
 - Warning 7. Keep your fingers and other conductors from coming into contact with the electrically charged parts in order to avoid electrical shock or a short circuit.
 - In case of stacked product, EF2-D60-1(01) shall be used together with EF2-D60-1.
 Please see Figure.3 for stacking method.
 - To prevent parts ⑨ and ⑩ from dropping off, attach fasteners on both side.



NO.	MATERIAL	FINISH	REMARKS	NO.	MATERIAL	FINISH	REMARKS
5	PBT	(Orange)	UL94V-0	10	m-PPE	(Black)	UL94V-0
4	PBT	(Black)	UL94V-0	9	m-PPE	(Black)	UL94V-0
3	Stainless steel			8	m-PPE	(Black)	UL94V-0
2	Copper	Tin plating	3μm min	7	PBT	(Black)	UL94V-0
1	m-PPE	(Black)	UL94V-0	6	Stainless steel		

UNITS	SCALE	COUNT	DESCRIPTION OF REVISIONS	DESIGNED	CHECKED	DATE
mm	1 : 1	1	DIS-C-00002545	HT. ZENBA	TP. KOMATSU	18. 08. 07
APPROVED : YH. YAMADA			18. 02. 26	DRAWING NO. EDC-119729-00-00		
CHECKED : TP. KOMATSU			18. 02. 26	PART NO. EF2-D60-1		
DESIGNED : HT. ZENBA			18. 02. 26	CODE NO. CL142-0104-0-00		
DRAWN : EK. KIDO			18. 02. 26	1/2		

Apr.1.2019 Copyright 2019 HIROSE ELECTRIC CO., LTD. All Rights Reserved.
 In case of consideration for using Automotive equipment / device which demand high reliability, kindly contact our sales window correspondents.

Figure.3 How to stack EF2-D60. (Example: 3 connectors)

The stacking method is as follows.
 Align EF2-D60-1 between two pieces of EF2-D60-1(O1),
 then sandwich it in the middle of No. ⑨ and No. ⑩.

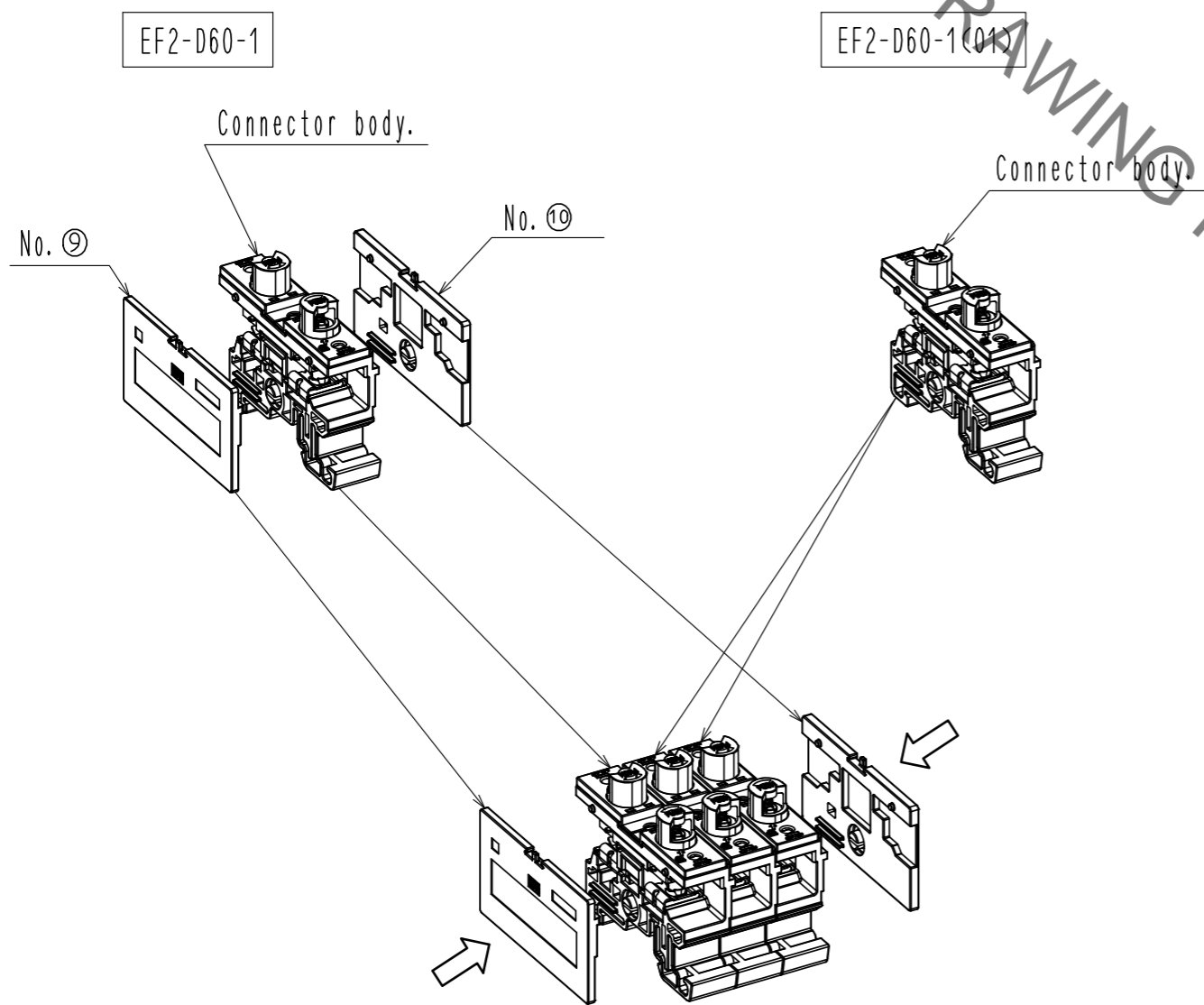
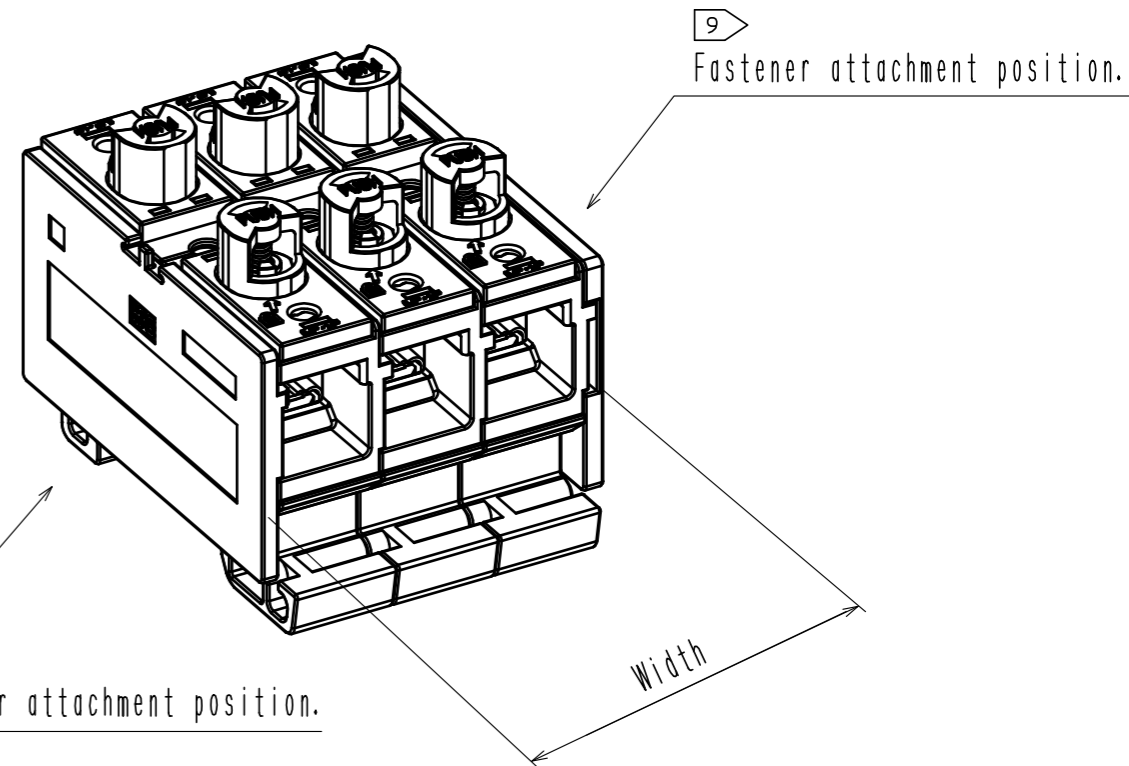


Figure.4 From Connector to Connectors



Number of Connector	1	2	3	4	5	n
Width	21.0	36.55	52.1	67.65	83.2	$5.45+15.55 \times n$

HRS	DRAWING NO.	EDC-119729-00-00	
	PART NO.	EF2-D60-1	
	CODE NO.	CL142-0104-0-00	$\frac{2}{2}$