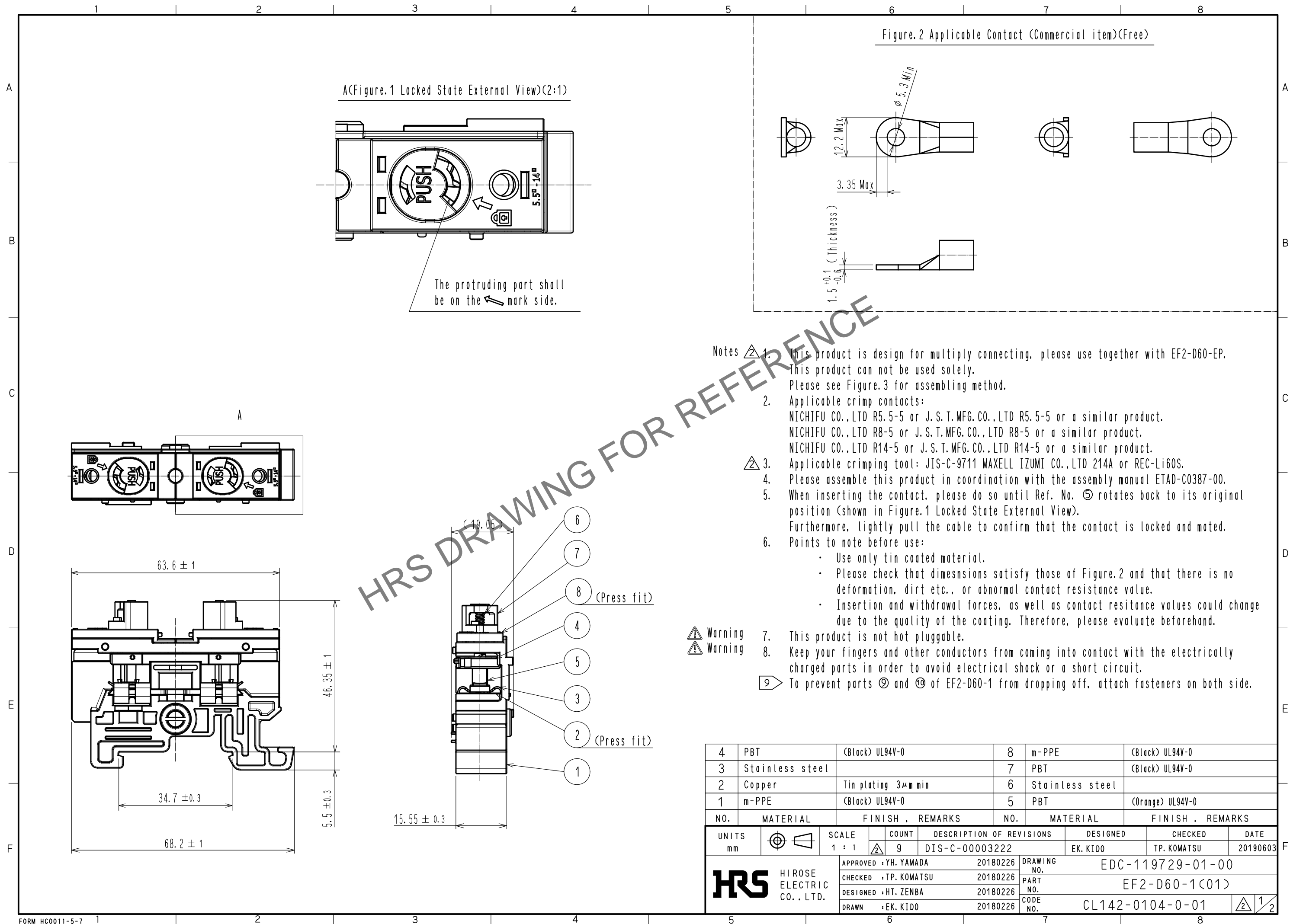


Mar.1.2024 Copyright 2024 HIROSE ELECTRIC CO., LTD. All Rights Reserved.
In case of consideration for using Automotive equipment / device which demand high reliability, kindly contact our sales window correspondents.



Mar.1.2024 Copyright 2024 HIROSE ELECTRIC CO., LTD. All Rights Reserved.
In case of consideration for using Automotive equipment / device which demand high reliability, kindly contact our sales window correspondents.

Figure.3 How to stack EF2-D60. (Example: 3 connectors)

The stacking method is as follows.

Connector : EF2-D60-1(01) 3pcs

End Plate : EF2-D60-EP 1set

Place the three EF2-D60-1(01) in a row
and install EF2-D60-EP on both sides.

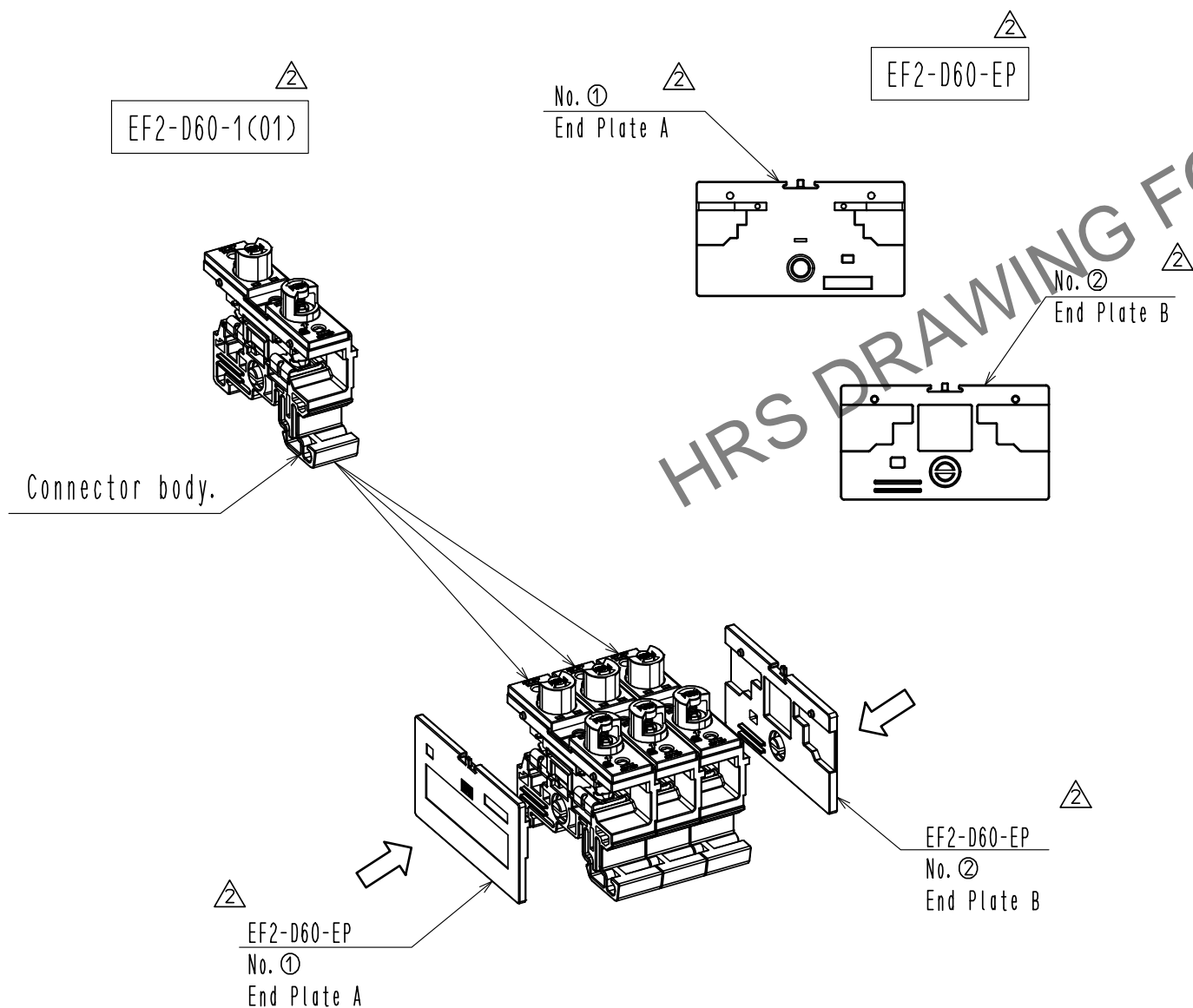
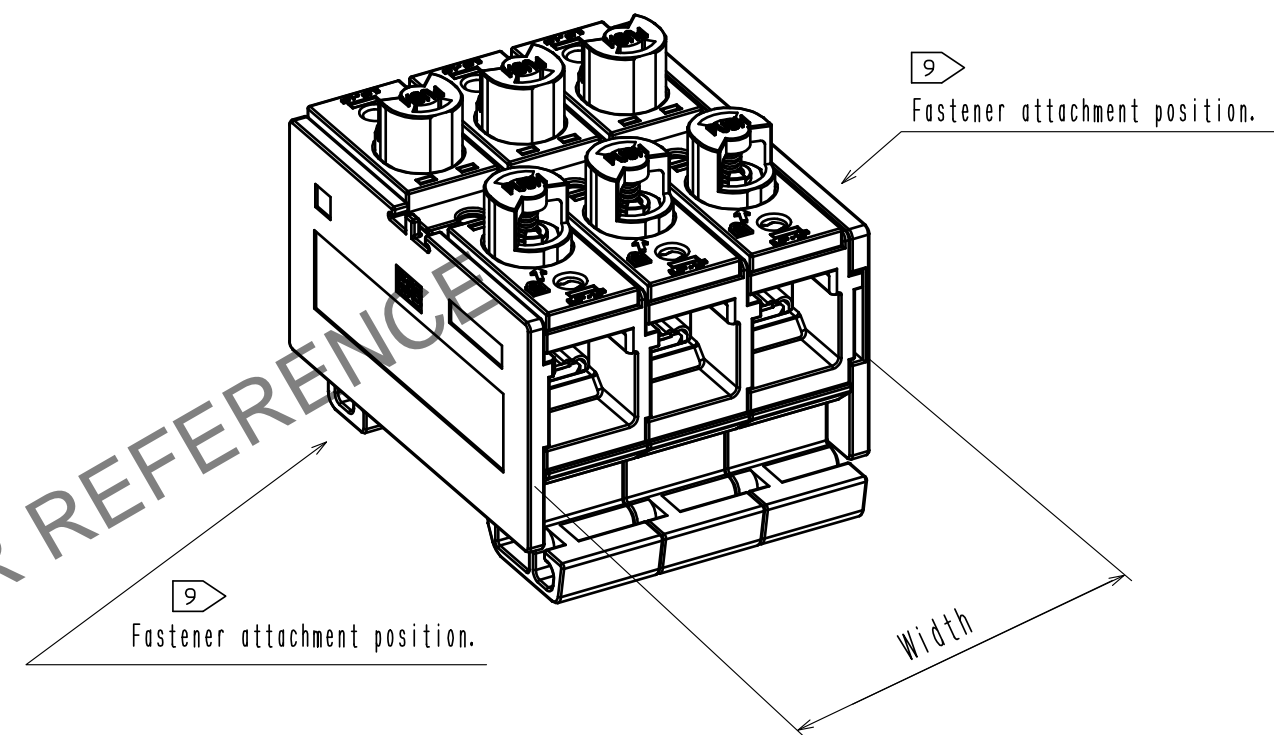


Figure.4 From Connector to Connectors



Number of Connector	1	2	3	4	5	n
Width	21.0	36.55	52.1	67.65	83.2	$5.45+15.55 \times n$

HRS

DRAWING NO.	EDC-119729-01-00
PART NO.	EF2-D60-1(01)
CODE NO.	CL142-0104-0-01

2/2