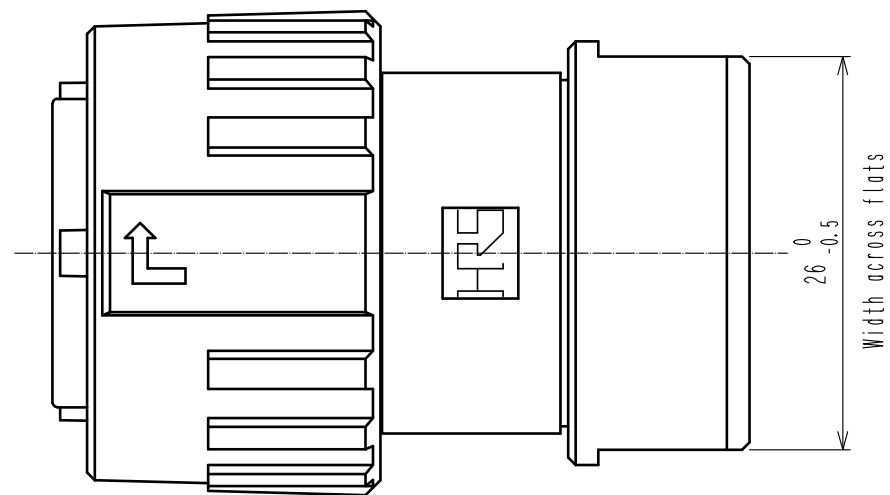
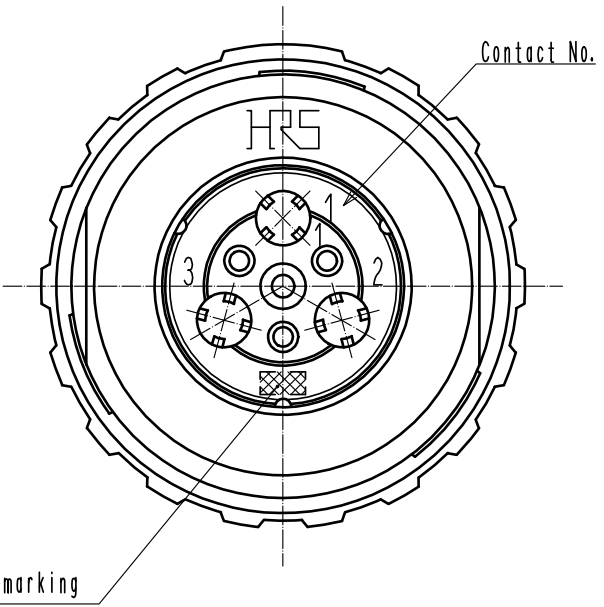
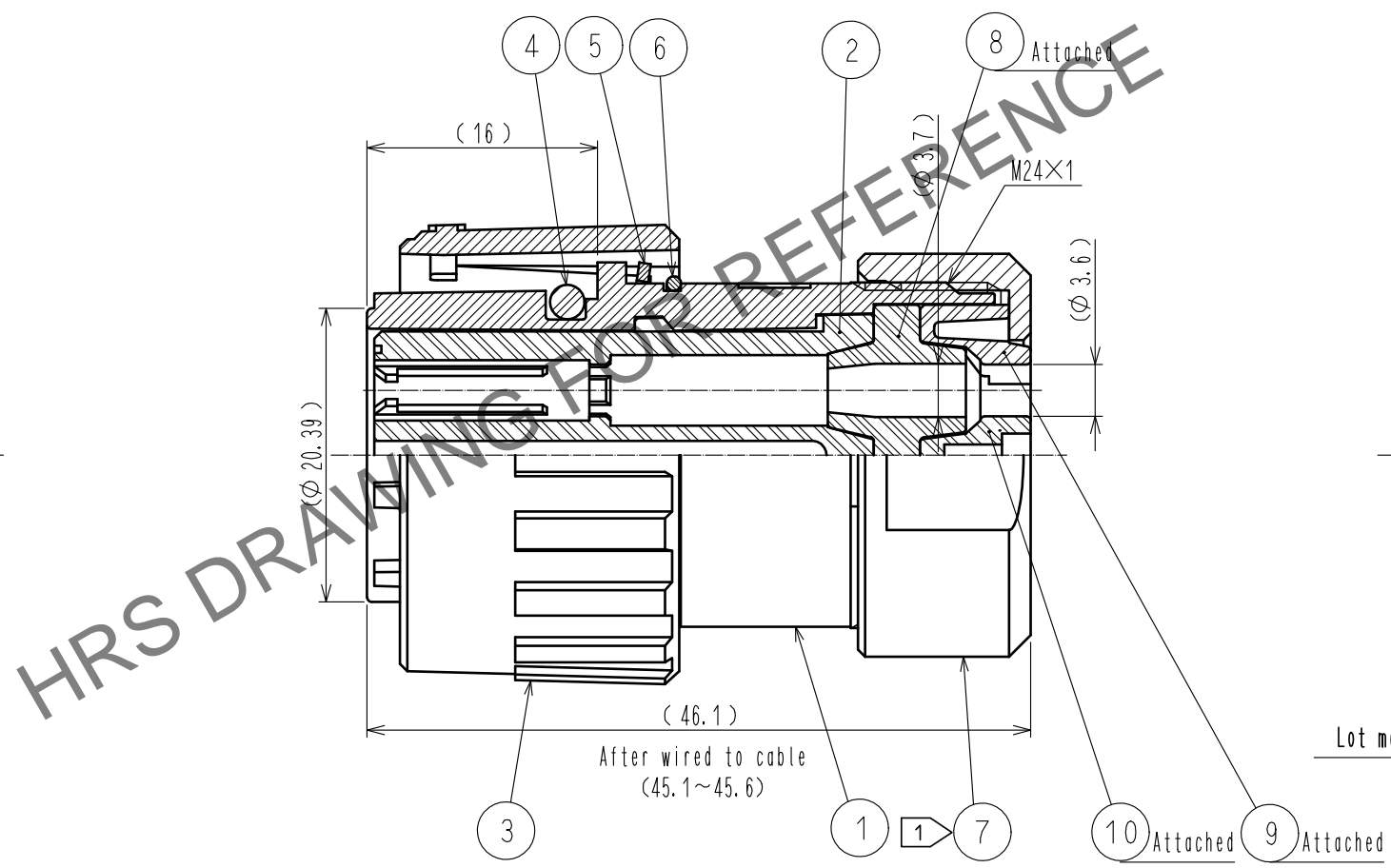
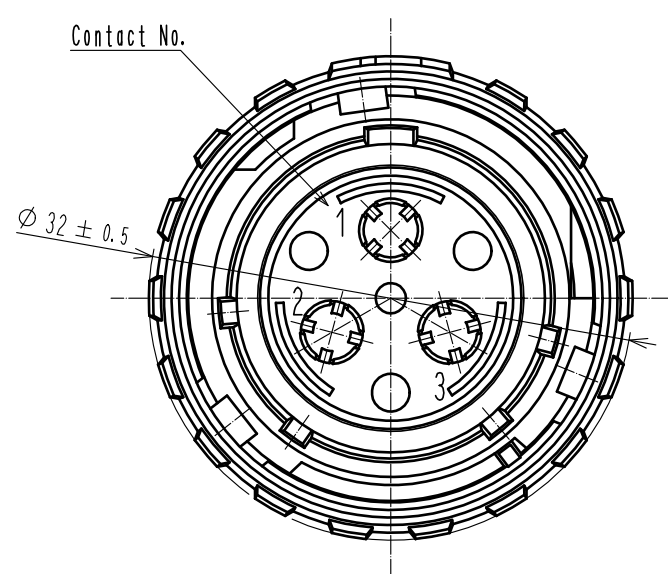


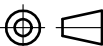



Apr.1.2024 Copyright 2024 HIROSE ELECTRIC CO., LTD. All Rights Reserved.  
In case of consideration for using Automotive equipment / device which demand high reliability, kindly contact our sales window correspondents.



Applicable crimp contact	
HR43-SC-111	CL143-0003-5-00



- Notes
- The recommended tightening torque of REF. No. ⑦ : 7 to 7.5 N・m.  
Thread locker to the threaded portion of REF. No. ⑦ is recommended to prevent loosening.  
The recommended thread locker : LOCTITE 243, HENKEL JAPAN CO, LTD.
  - Rotation examples are shown for REF. No. ①, ③, ⑤ and ⑦.
  - The cable pull and twisting strength, waterproof tightness, and other characteristics may differ, depending on the cable structure, please confirm before the use.
  - Applicable mating connector : HR43-21WBJ-3PC ( CL143-0002-2 ).

5	Stainless steel		10	PBT	Black					
4	Silicone rubber	Black	9	PBT	Black					
3	Aluminum alloy	Chrome plating	8	Silicone rubber	Black					
2	PBT	Black	7	Aluminum alloy	Chrome plating					
1	Aluminum alloy	Chrome plating	6	Stainless steel						
NO.	MATERIAL	FINISH . REMARKS		NO.	MATERIAL	FINISH . REMARKS				
UNITS mm				SCALE 2 : 1		COUNT	DESCRIPTION OF REVISIONS	DESIGNED	CHECKED	DATE
 HIROSE ELECTRIC CO., LTD.				APPROVED	HY. KOBAYASHI		16. 04. 01	DRAWING NO. EDC-117729-00-00		
				CHECKED	HY. KOBAYASHI		16. 04. 01	PART NO. HR43-21WBP-3SC		
				DESIGNED	TH. KAMEYA		16. 03. 31	CODE NO. CL143-0001-0-00		
				DRAWN	TH. KAMEYA		16. 03. 31	 1/1		