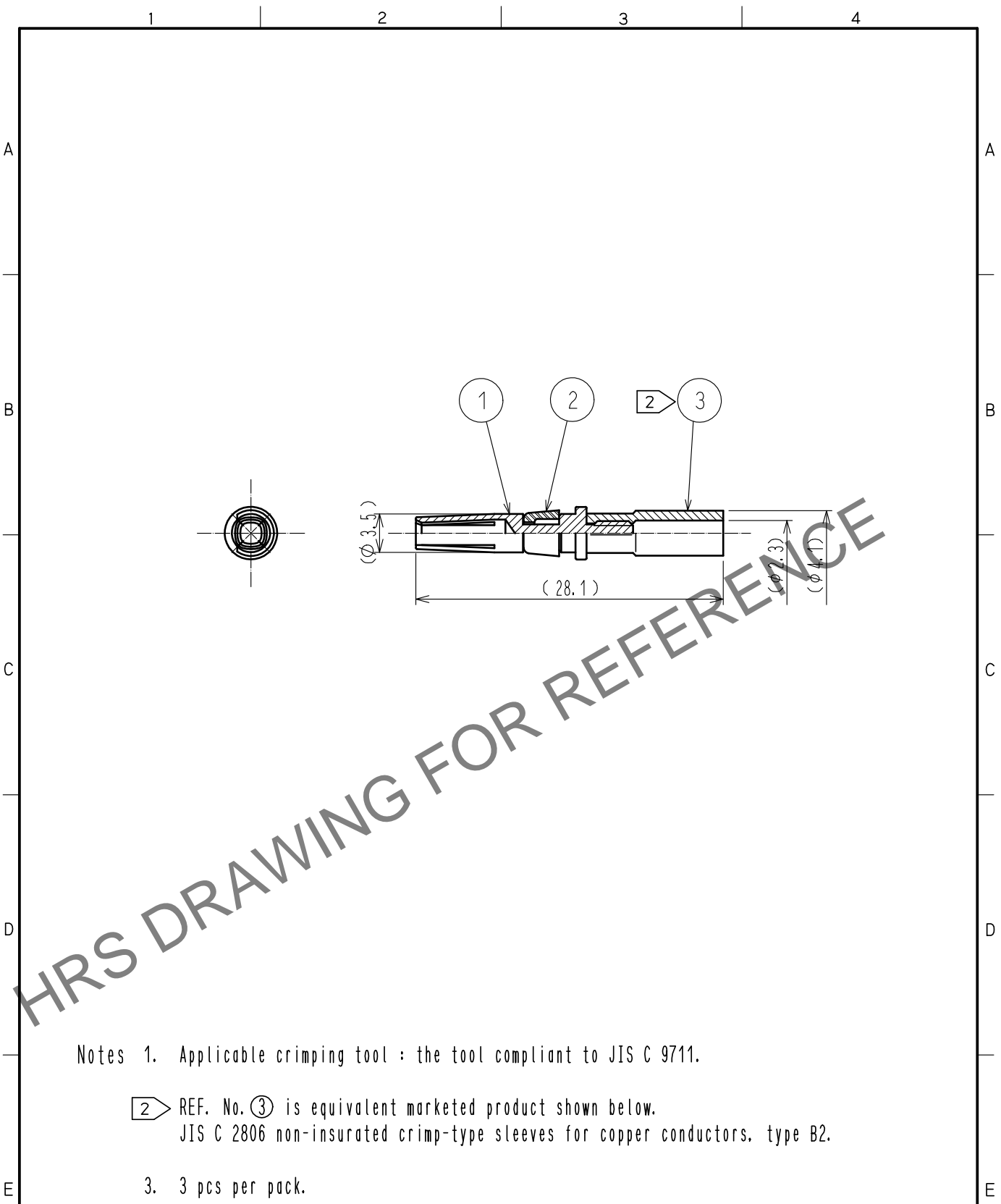


Apr.1.2024 Copyright 2024 HIROSE ELECTRIC CO., LTD. All Rights Reserved.
In case of consideration for using Automotive equipment / device which demand high reliability, kindly contact our sales window correspondents.



Notes 1. Applicable crimping tool : the tool compliant to JIS C 9711.

2 REF. No. 3 is equivalent marketed product shown below.
JIS C 2806 non-insurated crimp-type sleeves for copper conductors, type B2.

3. 3 pcs per pack.

2	PBT	Natural (White)			
1	Phosphor bronze	Gold plating 0.2μm min. (Contact area)	3	2	
NO.	MATERIAL	FINISH . REMARKS	NO.	MATERIAL	FINISH . REMARKS
UNITS mm		SCALE 2 : 1	COUNT 	DESCRIPTION OF REVISIONS	DESIGNED
		APPROVED :HY. KOBAYASHI 16.04.01	DRAWING NO. EDC-117734-00-00		
HIROSE ELECTRIC CO., LTD.		CHECKED :HY. KOBAYASHI 16.04.01	PART NO. HR43-SC-111		
		DESIGNED :TH. KAMEYA 16.03.31	CODE NO. CL143-0003-5-00		
		DRAWN :TH. KAMEYA 16.03.31			