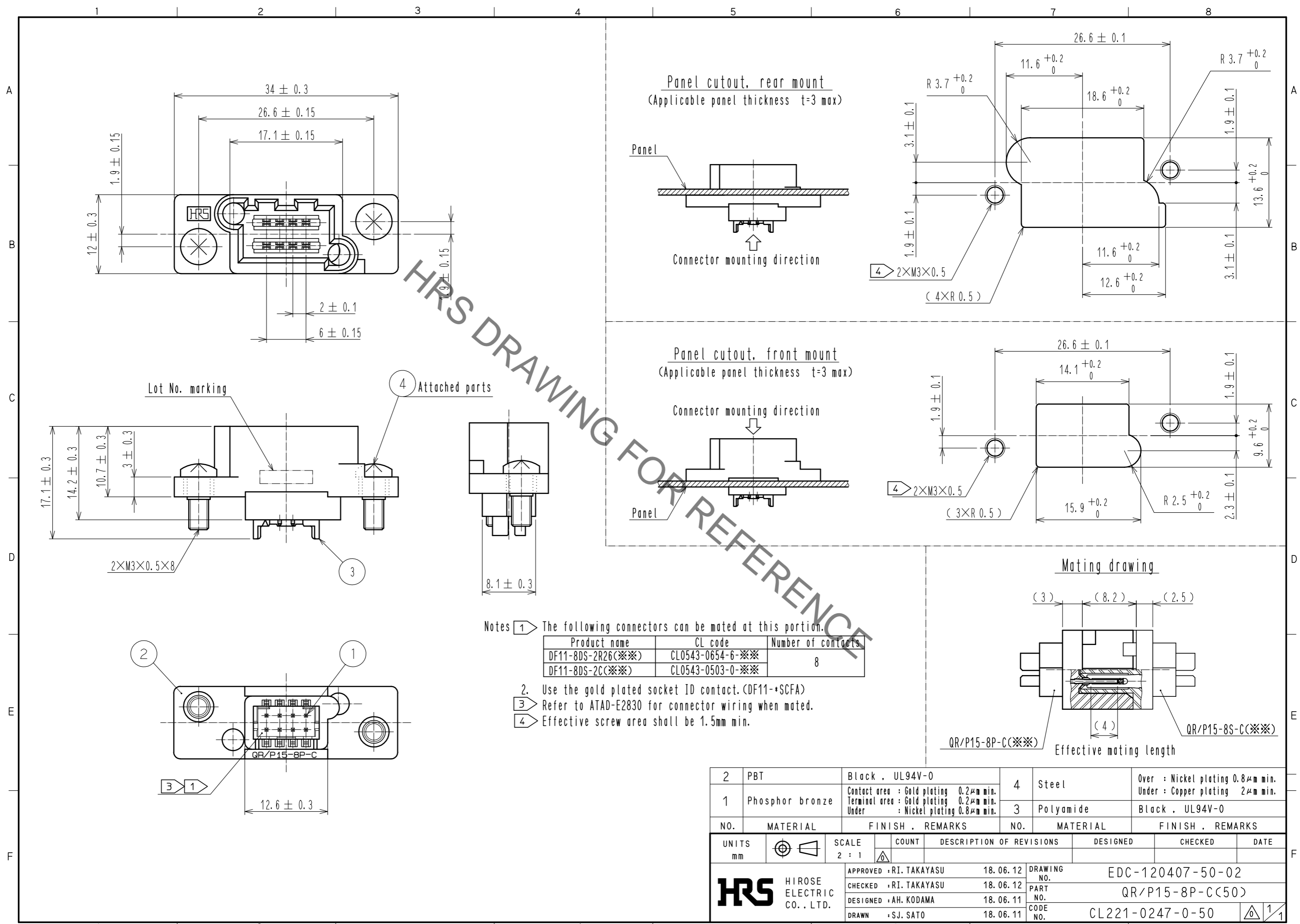


Nov.1.2019 Copyright 2019 HIROSE ELECTRIC CO., LTD. All Rights Reserved.  
In case of consideration for using Automotive equipment / device which demand high reliability, kindly contact our sales window correspondents.



- Notes
- 1 The following connectors can be mated at this portion.
- | Product name      | CL code          | Number of contacts |
|-------------------|------------------|--------------------|
| DF11-8DS-2R26(※※) | CL0543-0654-6-※※ | 8                  |
| DF11-8DS-2C(※※)   | CL0543-0503-0-※※ |                    |
2. Use the gold plated socket ID contact. (DF11-\*SCFA)
  - 3 Refer to ATAD-E2830 for connector wiring when mated.
  - 4 Effective screw area shall be 1.5mm min.

2	PBT	Black . UL94V-0	4	Steel	Over : Nickel plating 0.8μm min. Under : Copper plating 2μm min.			
1	Phosphor bronze	Contact area : Gold plating 0.2μm min. Terminal area : Gold plating 0.2μm min. Under : Nickel plating 0.8μm min.	3	Polyamide	Black . UL94V-0			
NO.	MATERIAL	FINISH . REMARKS	NO.	MATERIAL	FINISH . REMARKS			
UNITS	mm	SCALE	2 : 1	COUNT	DESCRIPTION OF REVISIONS	DESIGNED	CHECKED	DATE
APPROVED : RI. TAKAYASU		18.06.12		DRAWING NO.		EDC-120407-50-02		
CHECKED : RI. TAKAYASU		18.06.12		PART NO.		QR/P15-8P-C(50)		
DESIGNED : AH. KODAMA		18.06.11		CODE NO.		CL221-0247-0-50		
DRAWN : SJ. SATO		18.06.11				1/1		