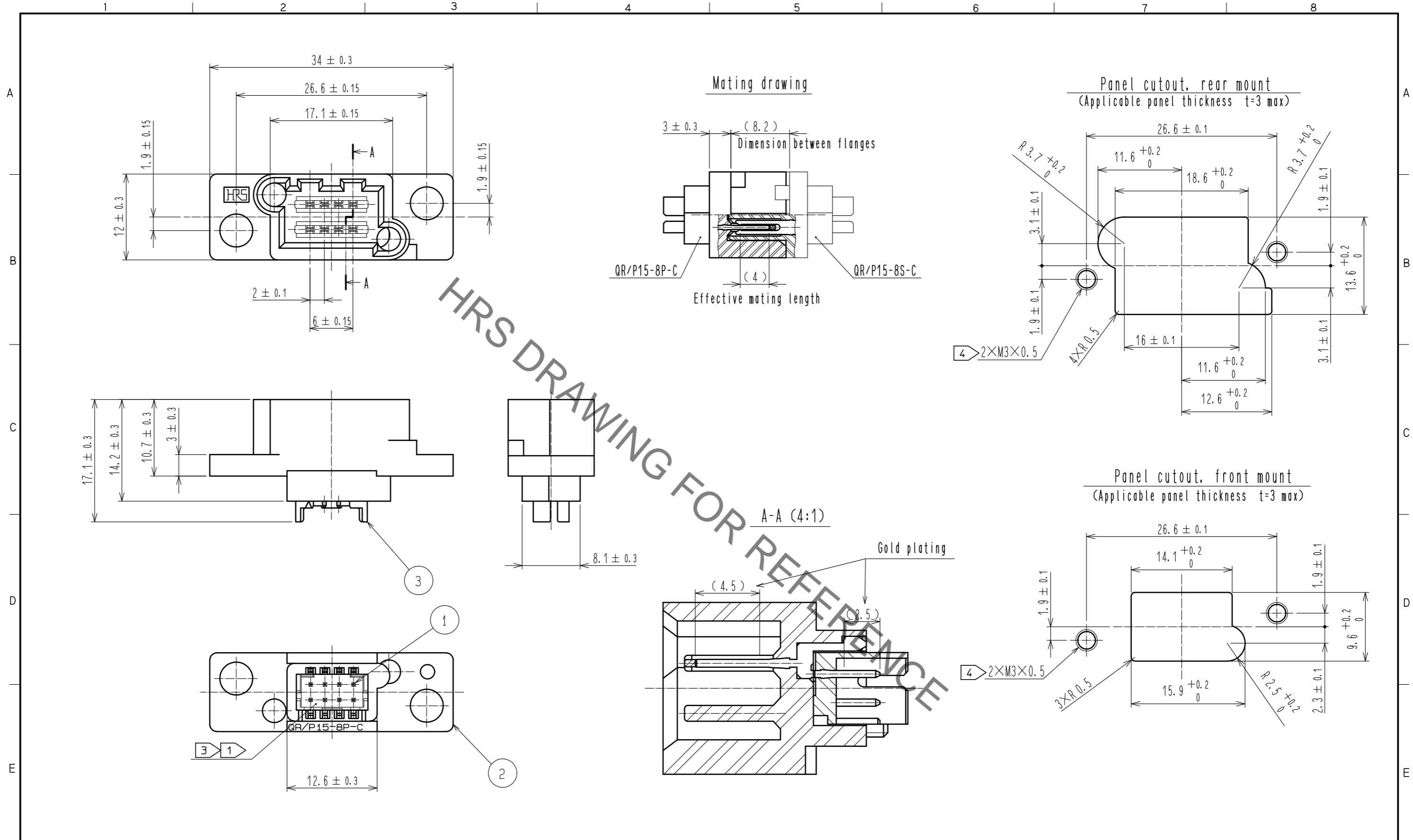


Nov.1.2019 Copyright 2019 HIROSE ELECTRIC CO., LTD. All Rights Reserved.  
In case of consideration for using Automotive equipment / device which demand high reliability, kindly contact our sales window correspondents.



- Notes
- ① DF11-8DS-2C(CLO543-0503-0-00) assembled with DF11-※SCFAC(Gold plated contact) can be mated at this portion.
  - 2. Use QR/P15-SCREW(CLO221-0251-8-00) for this product.
  - ③ Refer to ATAD-E2830 for connector wiring when mated.
  - ④ Effective screw area shall be 1.5mm min.

1	Phosphor bronze	Contact area : Gold plating 0.2μm min Terminal area : Gold plating 0.2μm min Under : Nickel plating 0.8μm min	3	Polyamide	Black , UL94V-0
			2	PBT	Black , UL94V-0
NO.	MATERIAL	FINISH . REMARKS	NO.	MATERIAL	FINISH . REMARKS
UNITS		SCALE	COUNT	DESCRIPTION OF REVISIONS	
mm		2 : 1		DESIGNED	CHECKED
<b>HRS</b> HIROSE ELECTRIC CO., LTD.		APPROVED : RI. TAKAYASU	18.06.12	DRAWING NO. EDC-120407-52-03	
		CHECKED : RI. TAKAYASU	18.06.12	PART NO. QR/P15-8P-C(52)	
		DESIGNED : AH. KODAMA	18.06.11	CODE NO. CL221-0247-0-52	
		DRAWN : SJ. SATO	18.06.11	DATE	