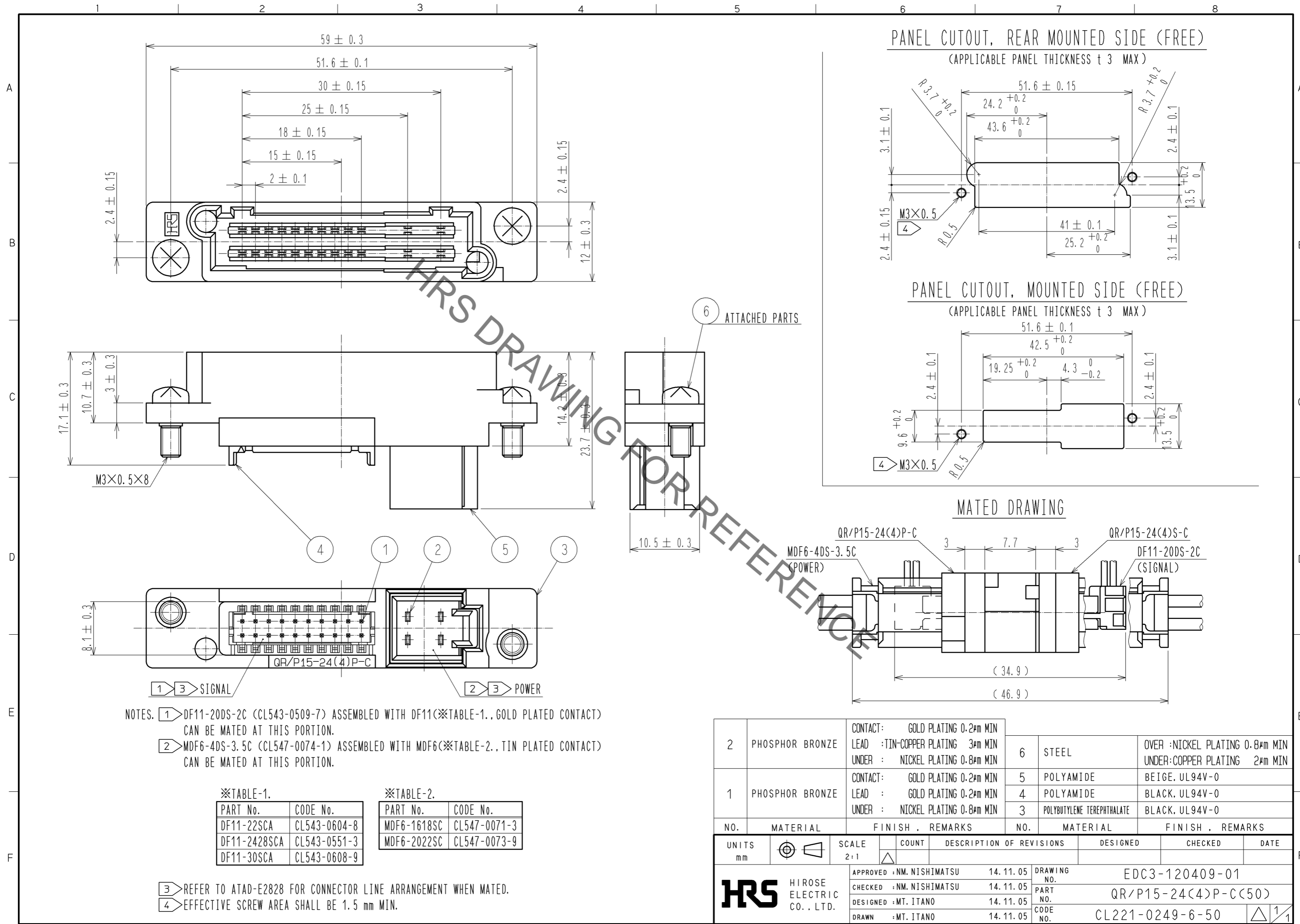


Jul.1.2020 Copyright 2020 HIROSE ELECTRIC CO., LTD. All Rights Reserved.
 In case of consideration for using Automotive equipment / device which demand high reliability, kindly contact our sales window correspondents.



NO.	MATERIAL	FINISH	REMARKS	NO.	MATERIAL	FINISH	REMARKS
2	PHOSPHOR BRONZE	CONTACT: GOLD PLATING 0.2μm MIN LEAD : TIN-COPPER PLATING 3μm MIN UNDER : NICKEL PLATING 0.8μm MIN		6	STEEL	OVER : NICKEL PLATING 0.8μm MIN UNDER: COPPER PLATING 2μm MIN	
1	PHOSPHOR BRONZE	CONTACT: GOLD PLATING 0.2μm MIN LEAD : GOLD PLATING 0.2μm MIN UNDER : NICKEL PLATING 0.8μm MIN		5	POLYAMIDE	BEIGE. UL94V-0	
				4	POLYAMIDE	BLACK. UL94V-0	
				3	POLYBUTYLENE TEREPHTHALATE	BLACK. UL94V-0	

UNITS	SCALE	COUNT	DESCRIPTION OF REVISIONS	DESIGNED	CHECKED	DATE
mm	2:1	△	APPROVED : NM. NISHIMATSU 14.11.05 CHECKED : NM. NISHIMATSU 14.11.05 DESIGNED : MT. ITANO 14.11.05 DRAWN : MT. ITANO 14.11.05			

DRAWING NO. EDC3-120409-01
 PART NO. QR/P15-24(4)P-C(50)
 CODE NO. CL221-0249-6-50