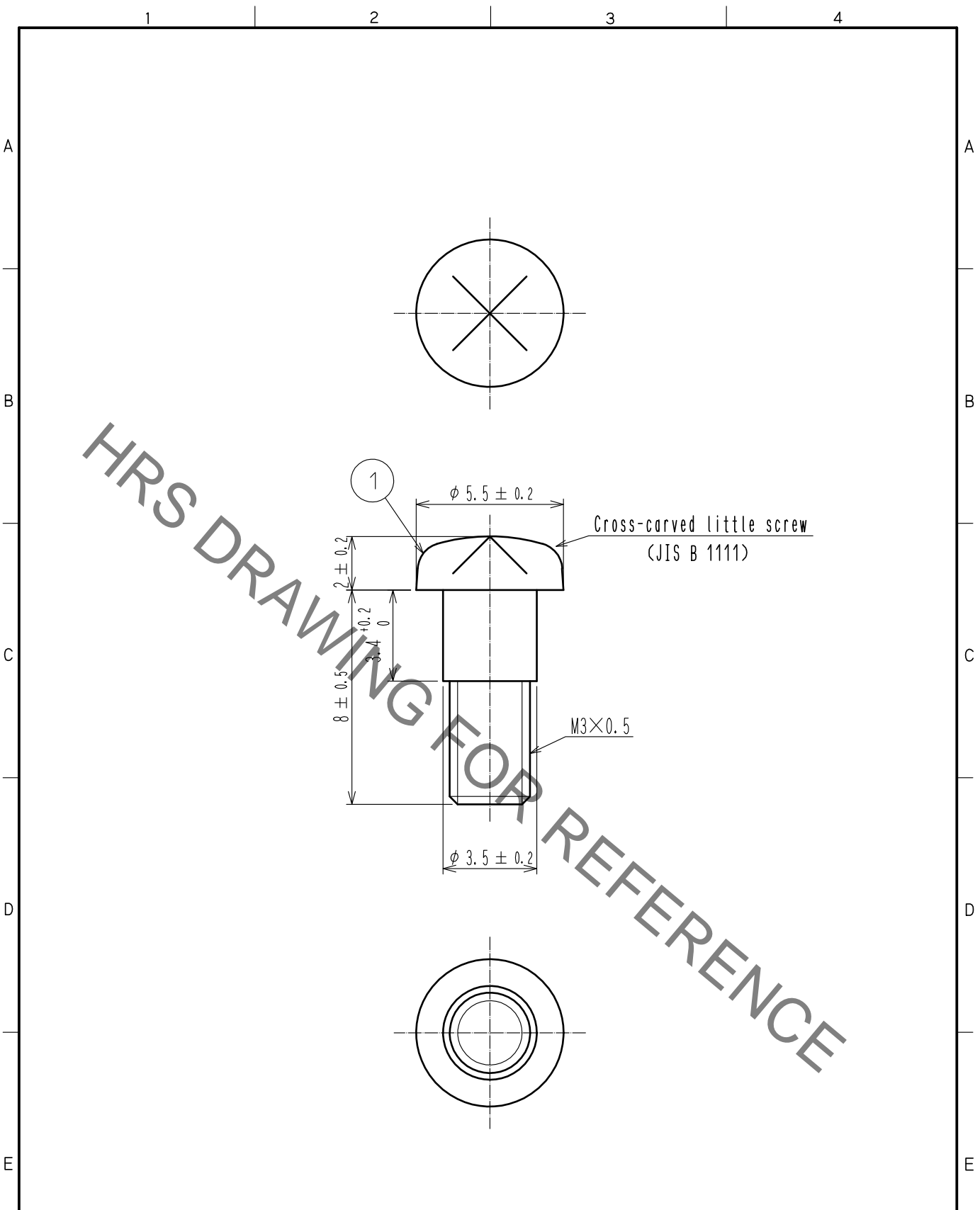


Nov.1.2019 Copyright 2019 HIROSE ELECTRIC CO., LTD. All Rights Reserved.
 In case of consideration for using Automotive equipment / device which demand high reliability, kindly contact our sales window correspondents.



Note.1 One pair shipment.

1	STEEL	Over : Nickel 0.8 μm min Under : Copper 2 μm min					
NO.	MATERIAL	FINISH	REMARKS				
UNITS mm		SCALE 5 : 1	COUNT 	DESCRIPTION OF REVISIONS	DESIGNED	CHECKED	DATE
HIROSE ELECTRIC CO., LTD.	APPROVED : NM. NISHIMATSU	17.06.27	DRAWING NO.	EDC-120580-00-00			
	CHECKED : NM. NISHIMATSU	17.06.27	PART NO.	QR/P15-SCREW			
	DESIGNED : TY. MIURA	17.06.27	CODE NO.	CL221-0251-8-00			
	DRAWN : JY. IGA	17.06.27		1/1			