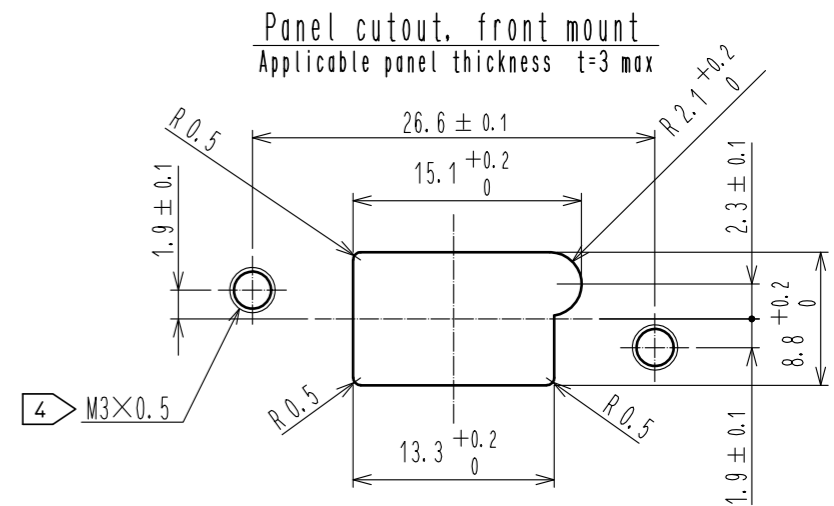
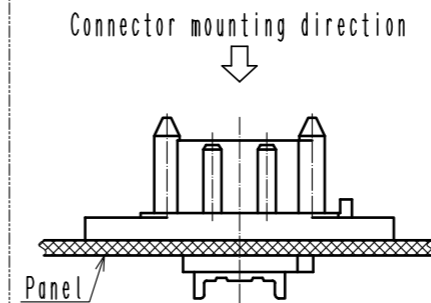
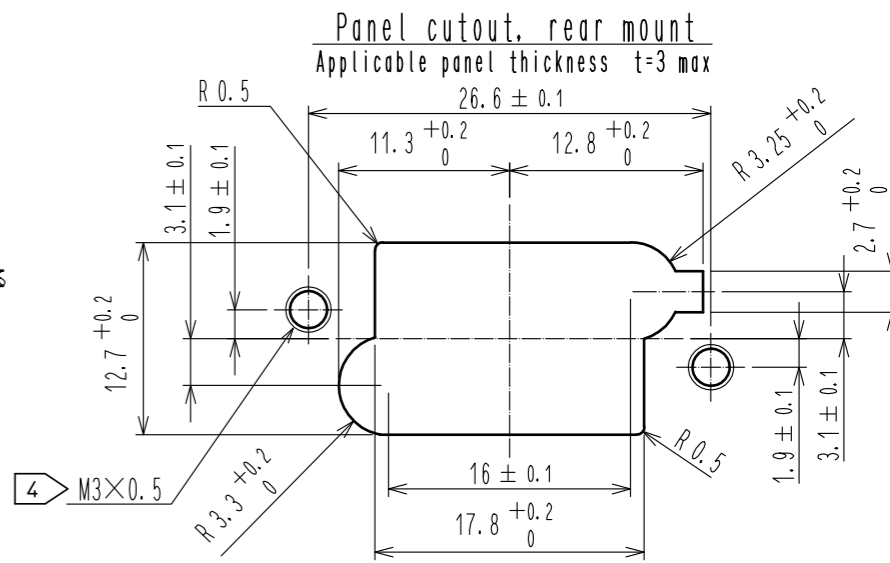
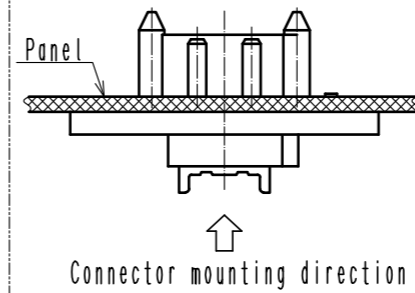
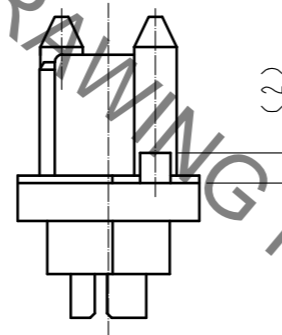
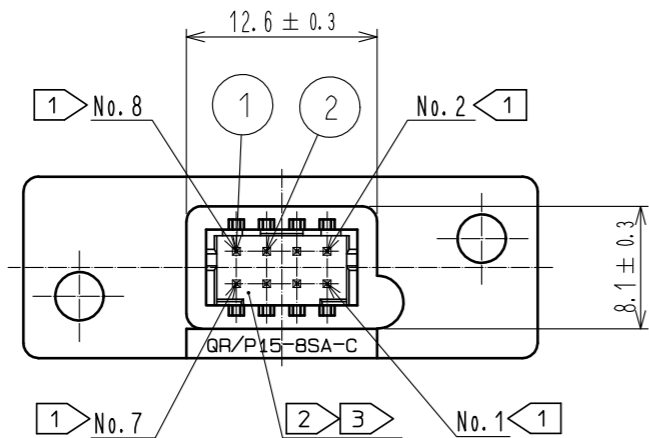
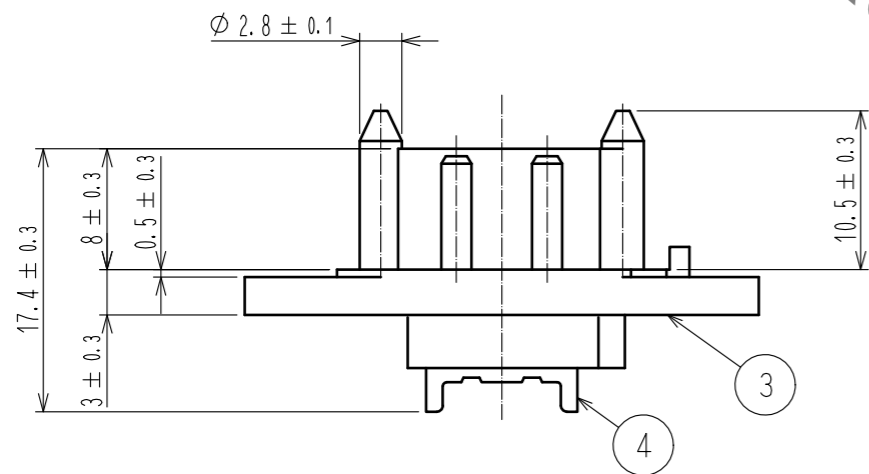
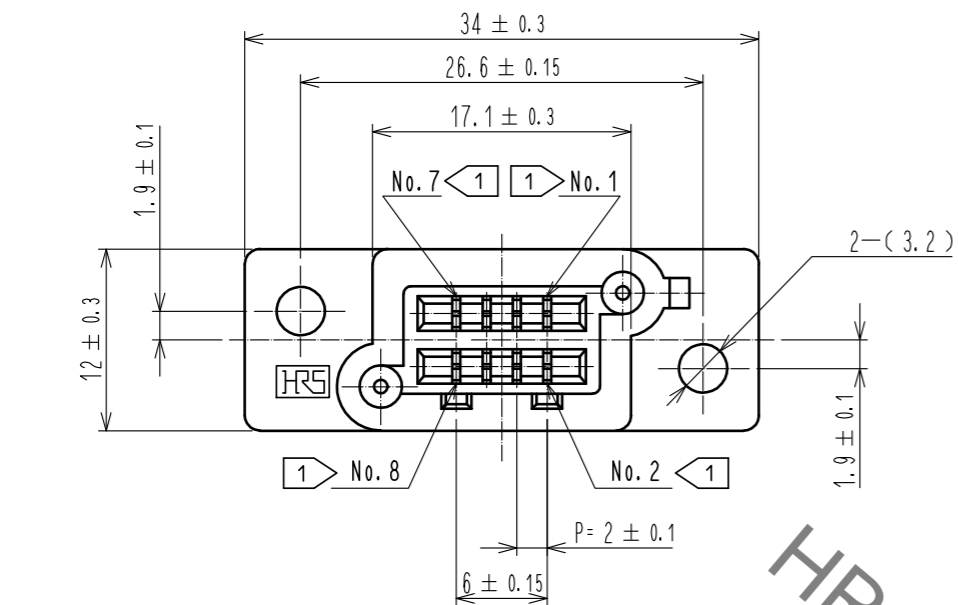
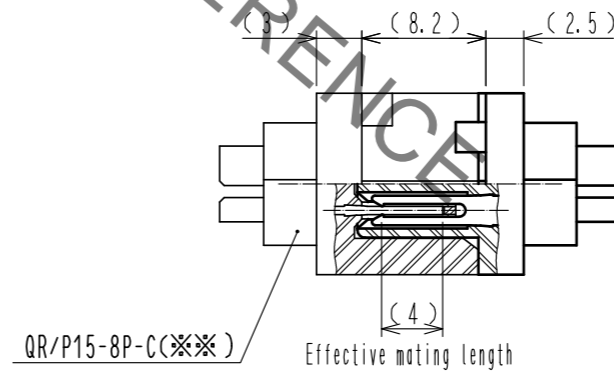


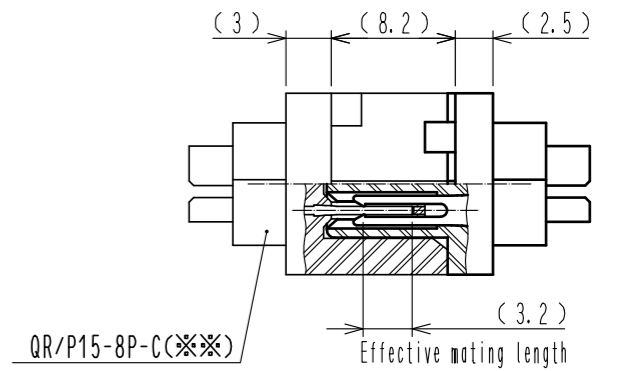
Nov.1.2019 Copyright 2019 HIROSE ELECTRIC CO., LTD. All Rights Reserved.
 In case of consideration for using Automotive equipment / device which demand high reliability, kindly contact our sales window correspondents.



Mating drawing (No. 1, 2, 7, 8)



Mating drawing (No. 3~6)



Notes 1 Contact No.1,2,7 and 8 are designed to touch earlier than any other contacts. (Sequence structure).

2 The following connectors can be mated at this portion.
 Use the tin plated socket crimp contact(DF11-*SCF).

Product name	HRS code	Number of contacts
DF11-8DS-2C	CL0543-0503-0	8

3 Refer to ATAD-E2830 for connector wiring when mated.

4 Effective screw area shall be 1.5mm min.

2	Phosphor bronze	Contact area : Gold plating 0.2μm min Terminal area: Tin plating 3μm min Under : Nickel plating 0.8μm min	4	Polyamide	Black . UL94V-0
1	Phosphor bronze	Contact area : Gold plating 0.2μm min Terminal area: Tin plating 3μm min Under : Nickel plating 0.8μm min	3	PBT	Black . UL94V-0
NO.	MATERIAL	FINISH . REMARKS	NO.	MATERIAL	FINISH . REMARKS
UNITS mm		SCALE 2 : 1	COUNT		DESCRIPTION OF REVISIONS
DESIGNED		DESIGNED	CHECKED		DATE
APPROVED : RI. TAKAYASU		18.06.12	DRAWING NO.		EDC-126788-00-00
CHECKED : RI. TAKAYASU		18.06.12	PART NO.		QR/P15-8SA-C
DESIGNED : AH. KODAMA		18.06.11	CODE NO.		CL221-0323-7-00
DRAWN : SJ. SATO		18.06.11			1/1