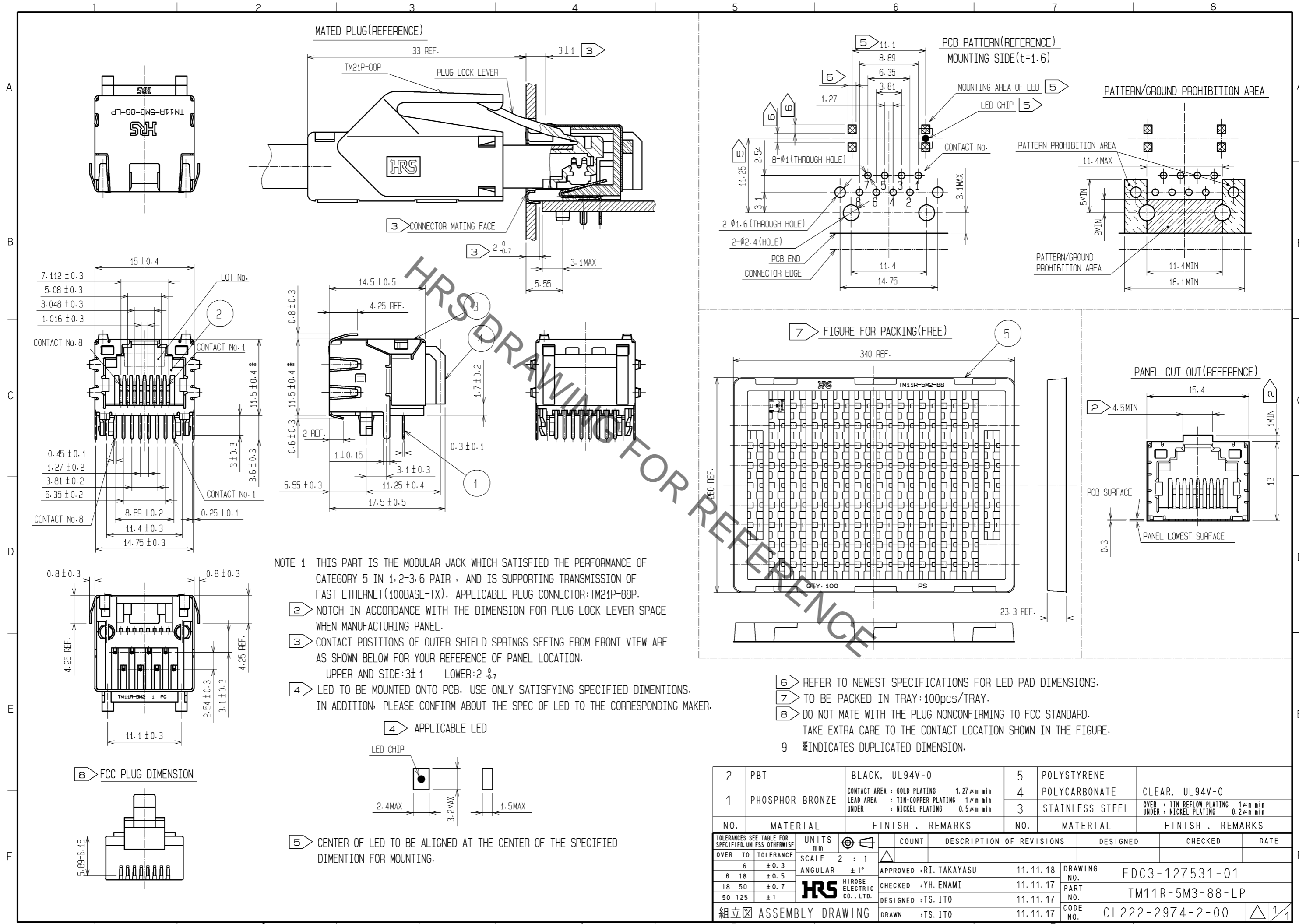


Sep.1.2020 Copyright 2020 HIROSE ELECTRIC CO., LTD. All Rights Reserved.  
In case of consideration for using Automotive equipment / device which demand high reliability, kindly contact our sales window correspondents.



NOTE 1 THIS PART IS THE MODULAR JACK WHICH SATISFIED THE PERFORMANCE OF CATEGORY 5 IN 1,2-3,6 PAIR , AND IS SUPPORTING TRANSMISSION OF FAST ETHERNET(100BASE-TX). APPLICABLE PLUG CONNECTOR:TM21P-88P.

2 NOTCH IN ACCORDANCE WITH THE DIMENSION FOR PLUG LOCK LEVER SPACE WHEN MANUFACTURING PANEL.

3 CONTACT POSITIONS OF OUTER SHIELD SPRINGS SEEING FROM FRONT VIEW ARE AS SHOWN BELOW FOR YOUR REFERENCE OF PANEL LOCATION.  
UPPER AND SIDE:3±1 LOWER:2±0.7

4 LED TO BE MOUNTED ONTO PCB. USE ONLY SATISFYING SPECIFIED DIMINTIONS. IN ADDITION, PLEASE CONFIRM ABOUT THE SPEC OF LED TO THE CORRESPONDING MAKER.

- 6 REFER TO NEWEST SPECIFICATIONS FOR LED PAD DIMENSIONS.
- 7 TO BE PACKED IN TRAY:100PCS/TRAY.
- 8 DO NOT MATE WITH THE PLUG NONCONFIRMING TO FCC STANDARD. TAKE EXTRA CARE TO THE CONTACT LOCATION SHOWN IN THE FIGURE.
- 9 \*INDICATES DUPLICATED DIMENSION.

2	PBT	BLACK, UL94V-0	5	POLYSTYRENE	
1	PHOSPHOR BRONZE	CONTACT AREA : GOLD PLATING 1.27µm min LEAD AREA : TIN-COPPER PLATING 1µm min UNDER : NICKEL PLATING 0.5µm min	4	POLYCARBONATE	CLEAR, UL94V-0
			3	STAINLESS STEEL	OVER : TIN REFLOW PLATING 1µm min UNDER : NICKEL PLATING 0.2µm min
NO.	MATERIAL	FINISH . REMARKS	NO.	MATERIAL	FINISH . REMARKS
TOLERANCES SEE TABLE FOR SPECIFIED, UNLESS OTHERWISE					
OVER	TO	TOLERANCE	UNITS	SCALE	COUNT
6	±0.3	mm	ANGULAR	2 : 1	△
6	18	±0.5			APPROVED :RI. TAKAYASU 11.11.18
18	50	±0.7			CHECKED :YH. ENAMI 11.11.17
50	125	±1			DESIGNED :TS. ITO 11.11.17
組立 ASSEMBLY DRAWING			DRAWN :TS. ITO 11.11.17		
DRAWING NO. EDC3-127531-01			PART NO. TM11R-5M3-88-LP		
CODE NO. CL222-2974-2-00			DATE		