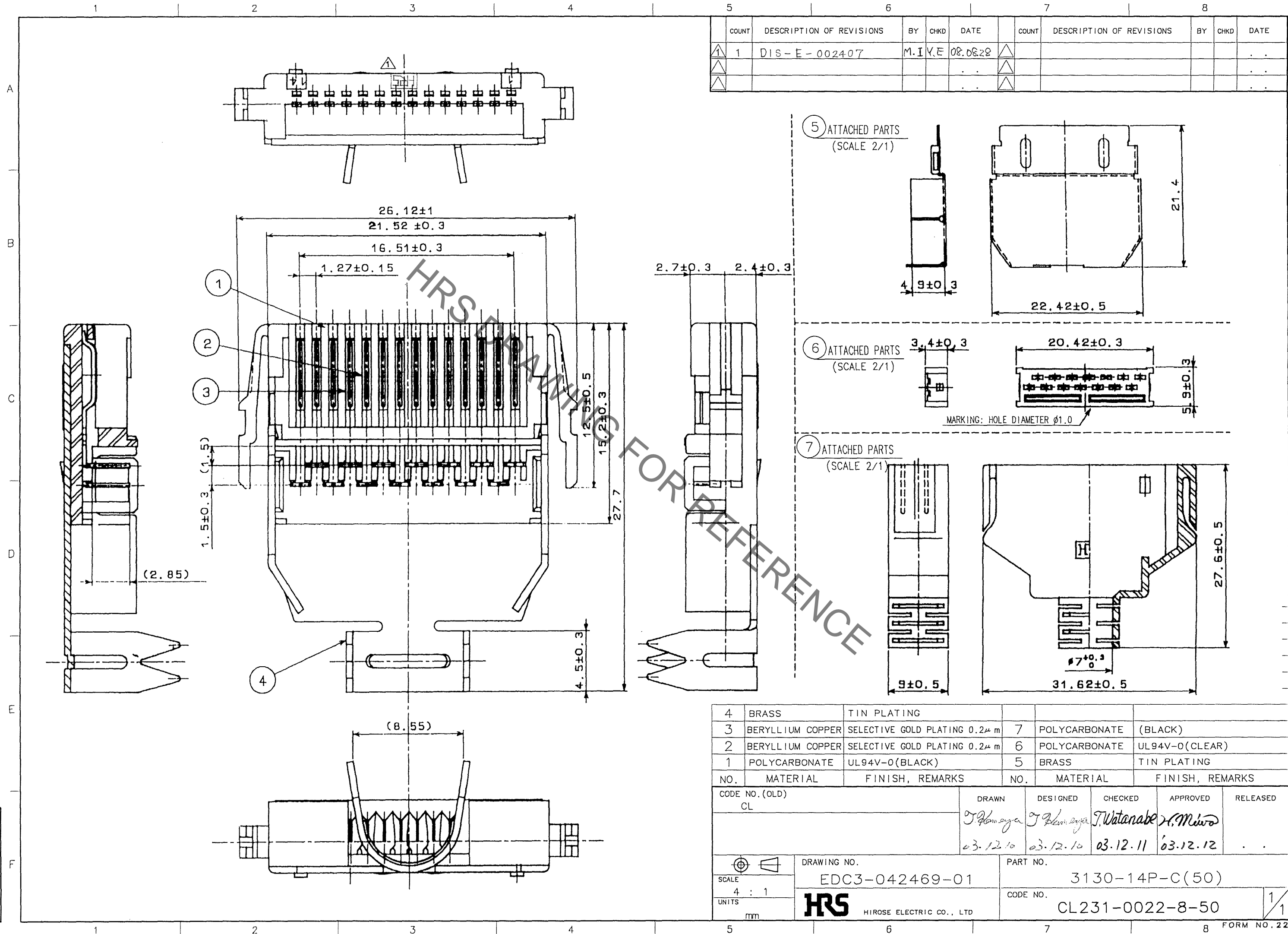
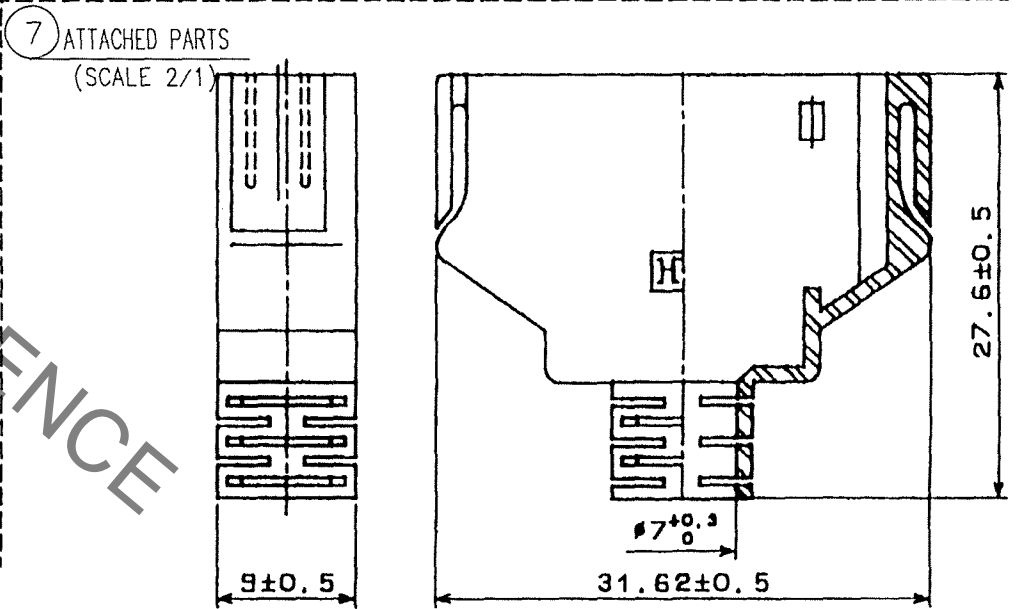
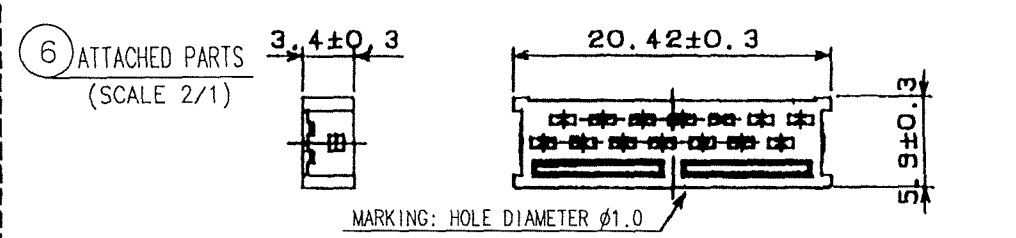
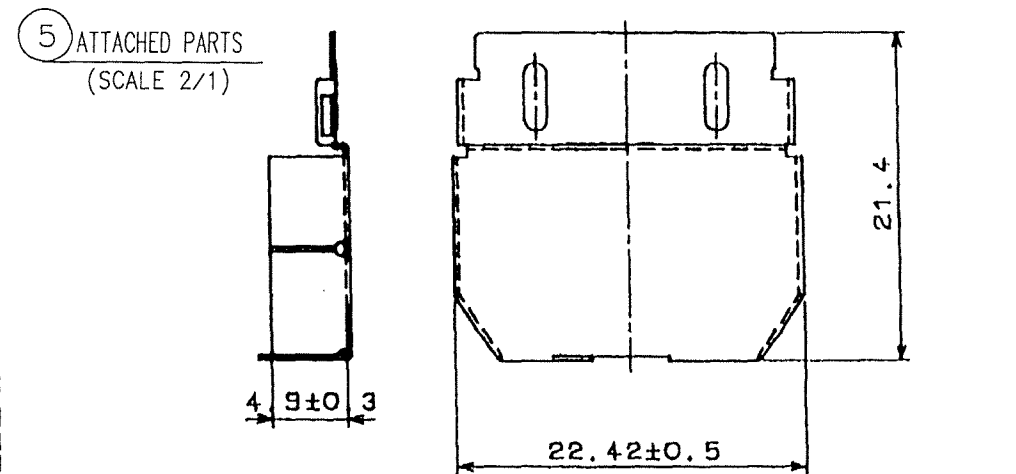


Oct.1.2019 Copyright 2019 HIROSE ELECTRIC CO., LTD. All Rights Reserved.
 In case of consideration for using Automotive equipment / device which demand high reliability, kindly contact our sales window correspondents.



COUNT	DESCRIPTION OF REVISIONS	BY	CHKD	DATE	COUNT	DESCRIPTION OF REVISIONS	BY	CHKD	DATE
1	DIS-E-002407	M.I.Y.E		08.08.28					



4	BRASS	TIN PLATING			
3	BERYLLIUM COPPER	SELECTIVE GOLD PLATING 0.2μm	7	POLYCARBONATE (BLACK)	
2	BERYLLIUM COPPER	SELECTIVE GOLD PLATING 0.2μm	6	POLYCARBONATE UL94V-0(CLEAR)	
1	POLYCARBONATE	UL94V-0(BLACK)	5	BRASS TIN PLATING	
NO.	MATERIAL	FINISH, REMARKS	NO.	MATERIAL	FINISH, REMARKS

CODE NO. (OLD)	DRAWN	DESIGNED	CHECKED	APPROVED	RELEASED
CL	<i>T. Yamaguchi</i>	<i>T. Yamaguchi</i>	<i>T. Watanabe</i>	<i>H. Minoda</i>	
	03.12.10	03.12.10	03.12.11	03.12.12	

SCALE	DRAWING NO.	PART NO.
4 : 1	EDC3-042469-01	3130-14P-C(50)
UNITS	HIROSE ELECTRIC CO., LTD	CODE NO.
mm	HRS	CL231-0022-8-50