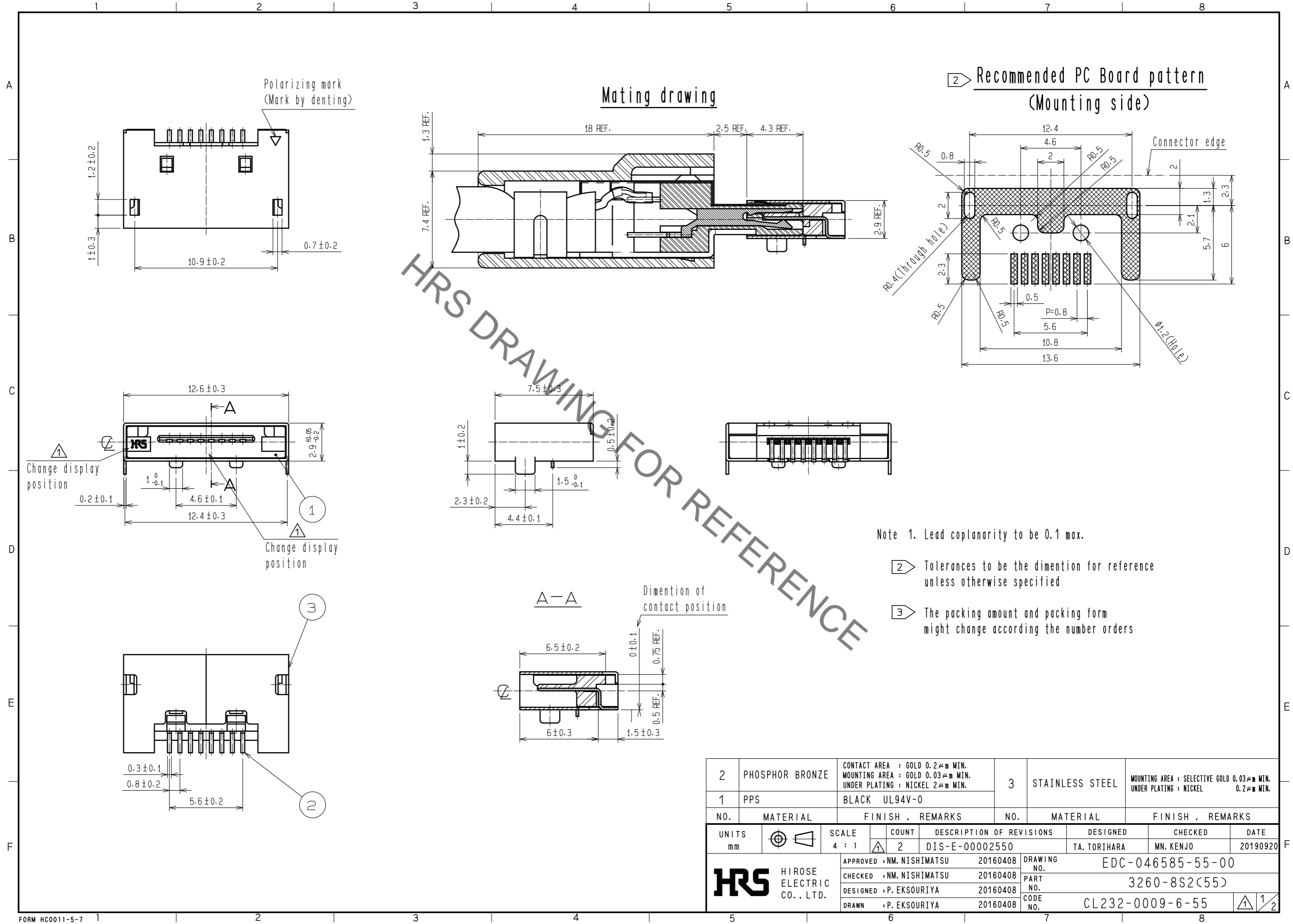


Oct.1.2019 Copyright 2019 HIROSE ELECTRIC CO., LTD. All Rights Reserved.
 In case of consideration for using Automotive equipment / device which demand high reliability, kindly contact our sales window correspondents.

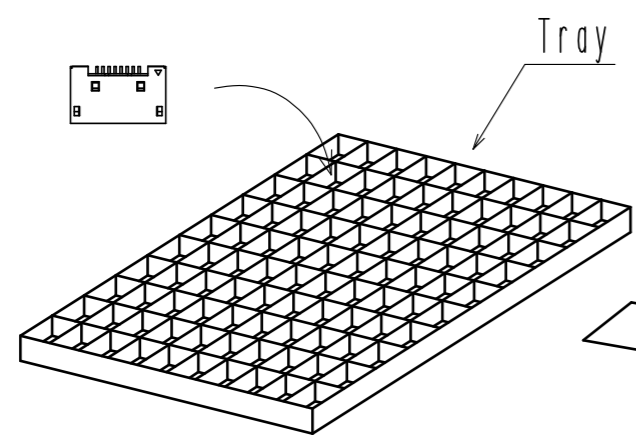


2	PHOSPHOR BRONZE	CONTACT AREA : GOLD 0.2μm MIN. MOUNTING AREA : GOLD 0.03μm MIN. UNDER PLATING : NICKEL 2μm MIN.	3	STAINLESS STEEL	MOUNTING AREA : SELECTIVE GOLD 0.03μm MIN. UNDER PLATING : NICKEL 0.2μm MIN.		
1	PPS	BLACK UL94V-0					
NO.	MATERIAL	FINISH . REMARKS	NO.	MATERIAL	FINISH . REMARKS		
UNITS	mm	SCALE	COUNT	DESCRIPTION OF REVISIONS	DESIGNED	CHECKED	DATE
		4 : 1	2	DIS-E-00002550	TA. TORIHARA	MN. KENJO	20190920
HRS HIROSE ELECTRIC CO., LTD.		APPROVED : NM. NISHIMATSU	20160408	DRAWING NO. EDC-046585-55-00			
		CHECKED : NM. NISHIMATSU	20160408	PART NO. 3260-8S2(55)			
		DESIGNED : P. EKSOURIYA	20160408	CODE NO. CL232-0009-6-55			
		DRAWN : P. EKSOURIYA	20160408				

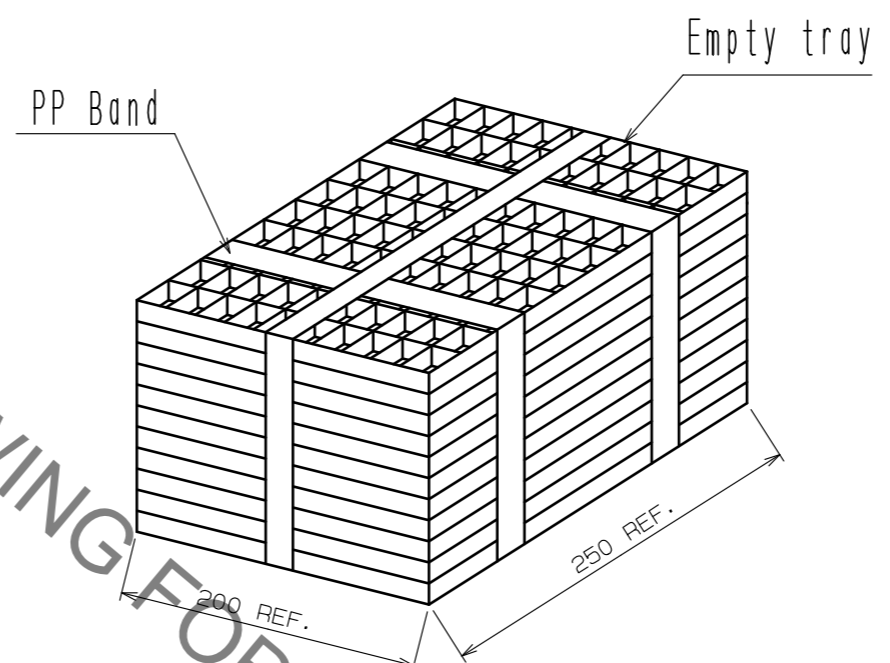
Oct.1.2019 Copyright 2019 HIROSE ELECTRIC CO., LTD. All Rights Reserved.
In case of consideration for using Automotive equipment / device which demand high reliability, kindly contact our sales window correspondents.

3 Packaging

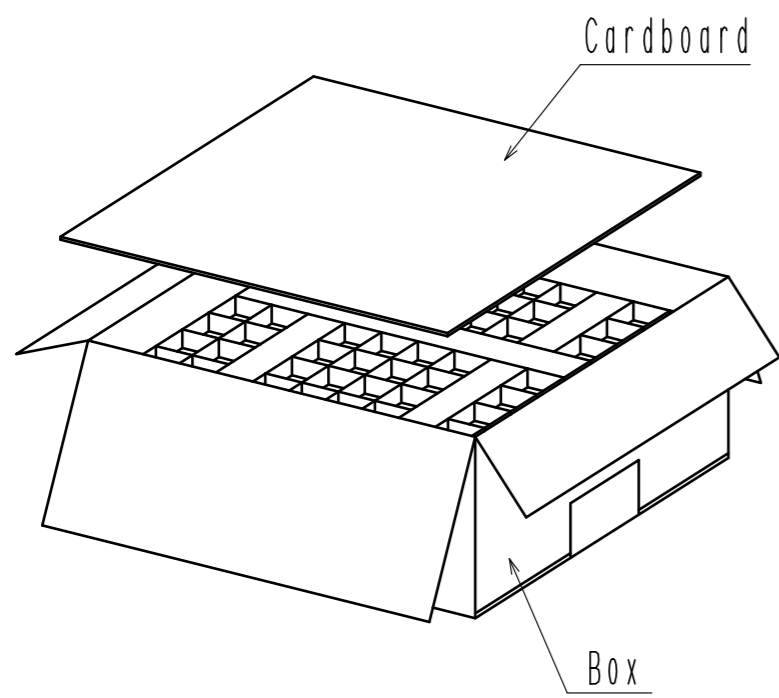
1. The connector is put in a tray in 100 PCS.



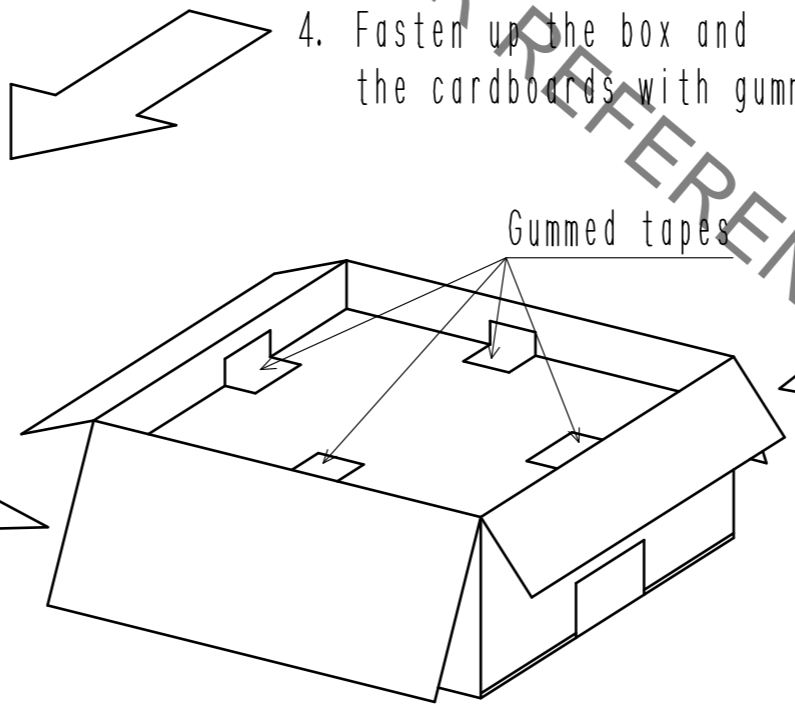
2. 10 trays of the connector are piled up aternately. Connector quality 1000 PCS.



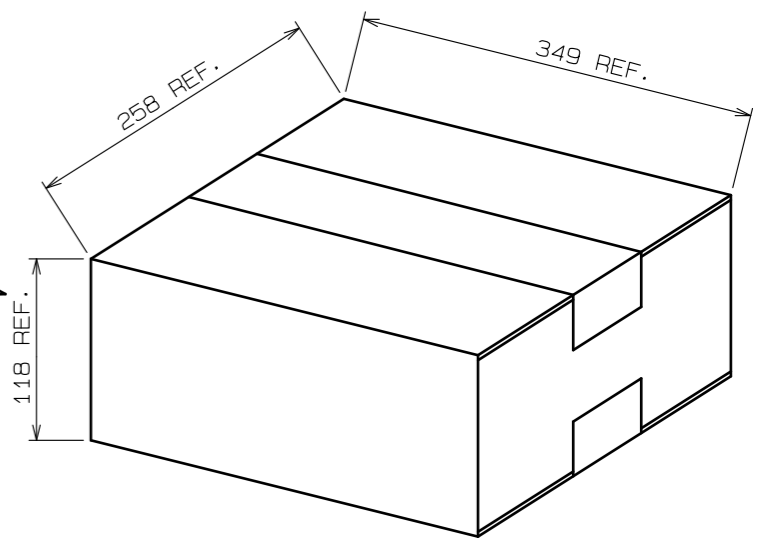
3. Piled up a pack of trays which banded in a box. Cover the top with the cardboard.



4. Fasten up the box and the cardboards with gummed tapes.



5. Close the box and fasten up with gummed tapes.



HRS DRAWING FOR REFERENCE

HRS	DRAWING NO.	EDC-046585-55-00
	PART NO.	3260-8S2(55)
	CODE NO.	CL232-0009-6-55
		2/2